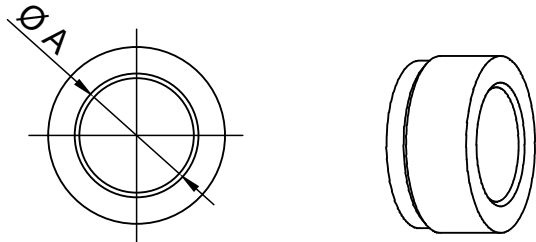
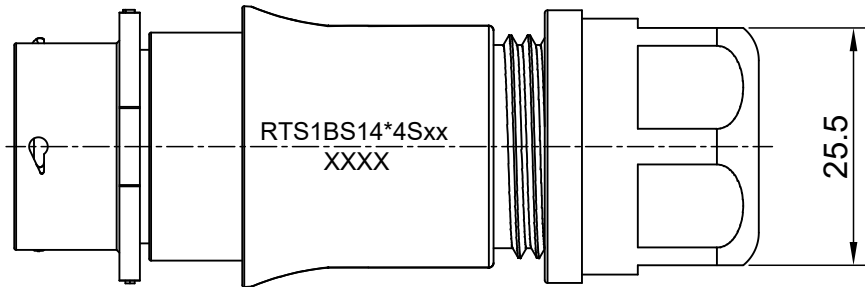
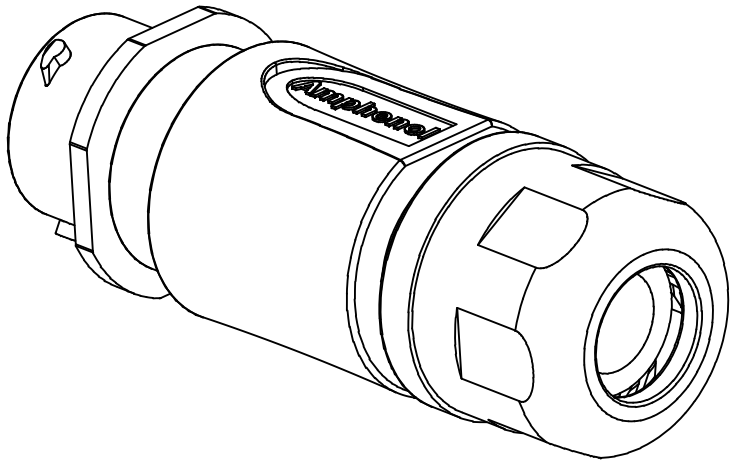
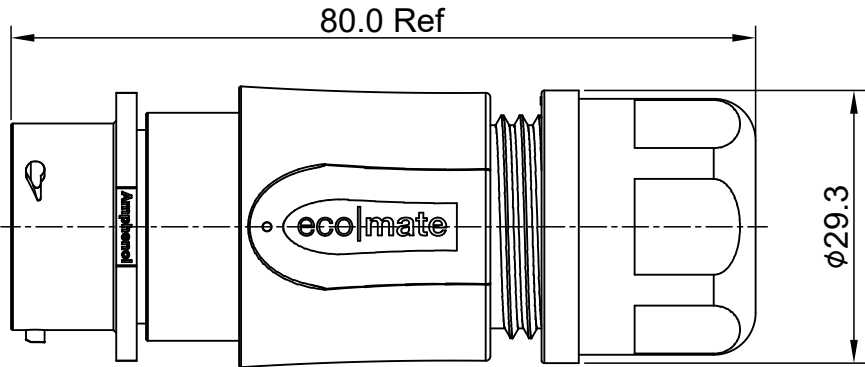
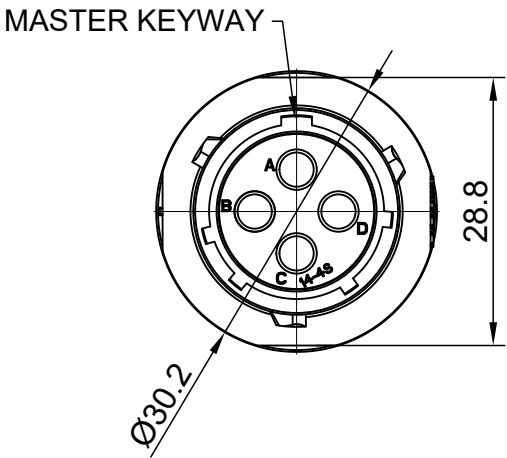


| REVISIONS |     |                  |             |       |       |
|-----------|-----|------------------|-------------|-------|-------|
| REV       | ECO | DESCRIPTION      | DATE        | BY    | APPR  |
| A1        | --  | RELEASED DRAWING | Jun-20-2018 | Blink | Tommy |




NOTES: (UNLESS OTHERWISE SPECIFIED)

- MATERIAL:
  - SHELL: THERMOPLASTIC, UL94 V-0.
  - INSERT: THERMOPLASTIC, UL94 V-0.
  - O-RING: NBR/SILICONE RUBBER.
  - BACK SHELL: THERMOPLASTIC, UL94 V-0.
  - CLAMP NUT: THERMOPLASTIC, UL94 V-0.
  - CLAMP RING: THERMOPLASTIC, UL94 V-0.
  - CABLE SEAL: EPDM.
- SPECIFICATIONS:
  - RATED CURRENT: 23A (MAX).
  - RATED VOLTAGE: 500V(AC/DC).
  - OPERATING TEMPERATURE: SEE TABLE .
  - DIELECTRIC WITHSTANDING VOLTAGE: LESS THAN 2 MILLIAMPS CURRENT LEAKAGE@2000 VOLTS AC.
  - INSULATION RESISTANCE: 5000 MEGOHMS MIN.
  - IP CLASS: IP67 AND IP69K IN THE MATED CONDITION.
  - MATING CYCLES DURABILITY: 500 CYCLES MIN.
  - RoHS COMPLIANT.
- SUITABLE CONTACTS : 2.5MM CONTACT.
- ALL DIMENSIONS ARE FOR REFERENCE USE ONLY.
- ADD LOCTITE TO RETAIN BACKSHELL DURING UN-MATING AND TO PROVIDE ADDITIONAL PROTECTION AGAINST VIBRATION.

| DIMENSION ØA | CABLE OD RANGE |
|--------------|----------------|
| 12.3MM       | 6.0-12.0mm     |
| 14.3MM       | 9.0-14.0mm     |

| KEY | PART NUMBER   |               |
|-----|---------------|---------------|
|     | -40°C ~ 105°C | -40°C ~ 125°C |
| N   | RTS1BS14N4S   | RTS1BS14N4S03 |

| QUANTITY   | PART NUMBER | DESCRIPTION   | ITEM   |
|--|-------------|---|--|
| MATERIALS LIST   |             |   |  |
| <div>UNLESS OTHERWISE SPECIFIED</div> <div>1) All dimensions are in metric(mm).</div> <div>2) Tolerances are as follows:</div> <div>1 PL DEC ±0.30</div> <div>2 PL DEC ±0.15</div> <div>3 PL DEC ±0.08</div> <div>Fractions ±1/64</div> <div>Angles ±1°</div> <div>3) Note reference = </div> |             | <div>SIGNATURES</div> <div>DATE</div> <div>DRAWN: Blink</div> <div>Jun-20-2018</div> <div>CHECKED: Tod</div> <div>Jun-20-2018</div> <div>ENGINEER:</div> <div>APPROVAL: Tommy</div> <div>Jun-20-2018</div> <div>CUSTOMER:</div> <div>THIS DRAWING IS SUPPLIED FOR INFORMATION ONLY. DESIGN FEATURES, SPECIFICATIONS AND PERFORMANCE DATA SHOWN HEREON ARE THE PROPERTY OF THE AMPHENOL CORPORATION. NO RIGHTS OF REPRODUCTION ARE IMPLIED. ALL DIMENSIONS ARE SUBJECT TO NORMAL MANUFACTURING VARIATIONS.</div> | <div>Amphenol</div> <div>Sine Systems - <a href="http://www.amphenol-sine.com">www.amphenol-sine.com</a></div> <div>44724 Morley Drive</div> <div>Clinton Township, MI 48036</div> <div>ECO-MATE,RECPTACLE,BACK SHELL,</div> <div>SIZE 14,4 POS ,SOCKET</div> <div>SIZE TYPE DWG NO: REVISION</div> <div>B C- RTS1BS14*4Sxx A1</div> <div>SCALE: NONE SHEET 1 OF 1</div> |

TITLE: ECOMATE,RECPTACLE,BACK SHELL,SIZE 14,4POS,SOCKET  
DWG NO: RTS1BS14\*4Sxx  
REV: A1  
SH: 1  
OF: 1