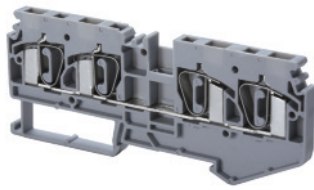


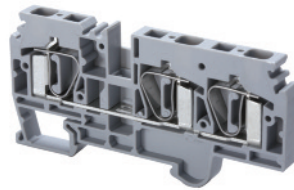
Feed-Through & Multi-Connection Spring Clamp



CSC4T2-2



CSC6T1-2



Terminal Width	6 mm	8 mm
Height x Length	42 x 105 mm	45 x 94 mm
Stripping Length	15 mm	15 mm
Insulation Material	Polyamide 6.6	Polyamide 6.6
Type of Connection	4 spring clamps & 2 slots for interconnection	3 spring clamps & 2 slots for interconnection
Approvals		
Wire Range	22-12 AWG 0.2-4 sq.mm 22-12 AWG	22-8 AWG 0.2-6 sq.mm 22-8 AWG
Voltage Rating	600 V 800 V 600 V	600 V 800 V 600 V
Current Rating	25 A 32 A 25 A	50 A 41 A 50 A
Other Approvals		

Terminal Block

End Plate

DIN Rail
for ordering information
refer to pages 90-91

End Stop
for ordering information
refer to page 92

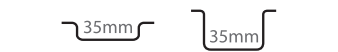
Jumpers Adjacent Alternate

Push in type wire jumper

Marking Tags

Cat. No.	Std. Pk.
----------	----------

CSC4T2-2	50
EPCSC4T2-2	50



CA103	50
CA702	50
CA802	50

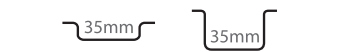
CA801/2	100
CA801/2-3	100

CA901/2	100
---------	-----

MT6	100
-----	-----

Cat. No.	Std. Pk.
----------	----------

CSC6T1-2	50
EPCSC6T1-2	50



CA103	50
CA702	50
CA802	50

CA801/3	100
CA801/3-3	100

CA901/3	100
---------	-----

MT8	100
-----	-----