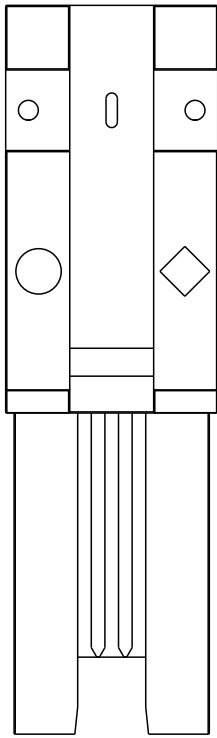
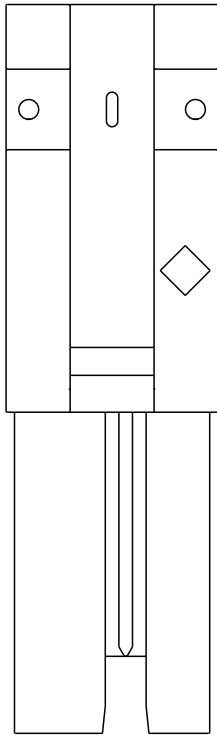


DETAIL A
KEY SLOTS #2 & #4 SHOWN
SCALE 2:1

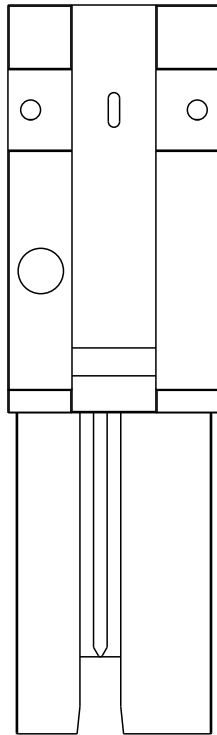
spec ref	---	dr	Stu Stoner	2008/02/05	projection	MM	size	A3	scale	1:1
tolerance std	TOLERANCES UNLESS OTHERWISE SPECIFIED	eng	Tom Feng	2014/09/24			ecn no	ELX-N-18883-1		
---		chr	-	-			rel level	Released		
---		appr	Delhly Liu	2014/09/24	product family	MiniSAS/SATA				
surface	linear	0.X	±0.3				dwg no	10084749	rev	H
		0.XX	±0.10							
		0.XXX	±0.050							
---	angular	0°	±2°							
		www.fci.com		cat. no.	-	Product - Customer Drw		sheet 1 of 6		



KEY SLOT 2, 4 & 6
○◇ UNVERSIAL PORT



KEY SLOT 2 & 4
◇ OUT PORT



KEY SLOT 4 & 6
○ IN PORT

MINI SAS 2.0

PRODUCT NUMBER SEE NOTE 4	HUAWEI PART NUMBER	DESCRIPTION	GAUGE	"DIM L" LENGTH	END P1 KEY SLOT	END P2 KEY SLOT	IDENTIFIER
I0084749-M060002LF	/	X4 SAS CABLE ASSEMBLY	24 AWG	6M	4, 6	4, 6	SUBTRACTIVE ROUTING (IN PORT), SAS
I0084749-N040002LF	/	X4 SAS CABLE ASSEMBLY	26 AWG	4M	4, 6	4, 6	
I0084749-N050002LF	/	X4 SAS CABLE ASSEMBLY	26 AWG	5M	4, 6	4, 6	
I0084749-P010002LF	/	X4 SAS CABLE ASSEMBLY	28 AWG	1M	4, 6	4, 6	
I0084749-P020002LF	/	X4 SAS CABLE ASSEMBLY	28 AWG	2M	4, 6	4, 6	
I0084749-P030002LF	/	X4 SAS CABLE ASSEMBLY	28 AWG	3M	4, 6	4, 6	
I0084749-M060003LF	/	X4 SAS CABLE ASSEMBLY	24 AWG	6M	2, 4, 6	2, 4, 6	UNIVERSAL KEY, SAS
I0084749-N030003LF	/	X4 SAS CABLE ASSEMBLY	26 AWG	3M	2, 4, 6	2, 4, 6	
I0084749-N040003LF	/	X4 SAS CABLE ASSEMBLY	26 AWG	4M	2, 4, 6	2, 4, 6	
I0084749-N050003LF	/	X4 SAS CABLE ASSEMBLY	26 AWG	5M	2, 4, 6	2, 4, 6	
I0084749-P002503LF	/	X4 SAS CABLE ASSEMBLY	28 AWG	0.25M	2, 4, 6	2, 4, 6	
I0084749-P010003LF	/	X4 SAS CABLE ASSEMBLY	28 AWG	1M	2, 4, 6	2, 4, 6	
I0084749-P015003LF	/	X4 SAS CABLE ASSEMBLY	28 AWG	1.5M	2, 4, 6	2, 4, 6	
I0084749-P020003LF	/	X4 SAS CABLE ASSEMBLY	28 AWG	2M	2, 4, 6	2, 4, 6	
I0084749-P025003LF	/	X4 SAS CABLE ASSEMBLY	28 AWG	2.5M	2, 4, 6	2, 4, 6	
I0084749-P030003LF	/	X4 SAS CABLE ASSEMBLY	28 AWG	3M	2, 4, 6	2, 4, 6	
I0084749-M060006LF	/	X4 SAS CABLE ASSEMBLY	24 AWG	6M	2, 4	4, 6	SAS, TABLE ROUTING (OUT PORT), TO SUBTRACTIVE ROUTING (IN PORT)
I0084749-N010006LF	/	X4 SAS CABLE ASSEMBLY	26 AWG	1M	2, 4	4, 6	
I0084749-N030006LF	/	X4 SAS CABLE ASSEMBLY	26 AWG	3M	2, 4	4, 6	
I0084749-N040006LF	/	X4 SAS CABLE ASSEMBLY	26 AWG	4M	2, 4	4, 6	
I0084749-N050006LF	/	X4 SAS CABLE ASSEMBLY	26 AWG	5M	2, 4	4, 6	
I0084749-P010006LF	0405G005	X4 SAS CABLE ASSEMBLY	28 AWG	1M	2, 4	4, 6	
I0084749-P020006LF	/	X4 SAS CABLE ASSEMBLY	28 AWG	2M	2, 4	4, 6	
I0084749-P030006LF	0405G003	X4 SAS CABLE ASSEMBLY	28 AWG	3M	2, 4	4, 6	

MINI SAS 2.0 KEYING OPTIONS

spec ref		---		dr		Stu Stoner		2008/02/05		projection		MM		size		A3		scale		1:1							
tolerance std		TOLERANCES UNLESS OTHERWISE SPECIFIED		eng		Tom Feng		2014/09/24						ecn no		ELX-N-18883-1											
---				chr		-		-																			
---				appr		Delhly Liu		2014/09/24								product family				MiniSAS/SATA				rel level			
surface				linear		0.X		±0.3				title		FINAL CABLE ASSEMBLY-ALTERNATE CABLE		dwg no		10084749		rev		H					
																								0.XX		±0.10	
																								0.XXX		±0.050	
---		angular		0°		±2°		www.fci.com		cat. no.		-		Product - Customer Drw		sheet 2 of 6											

A

B

C

D

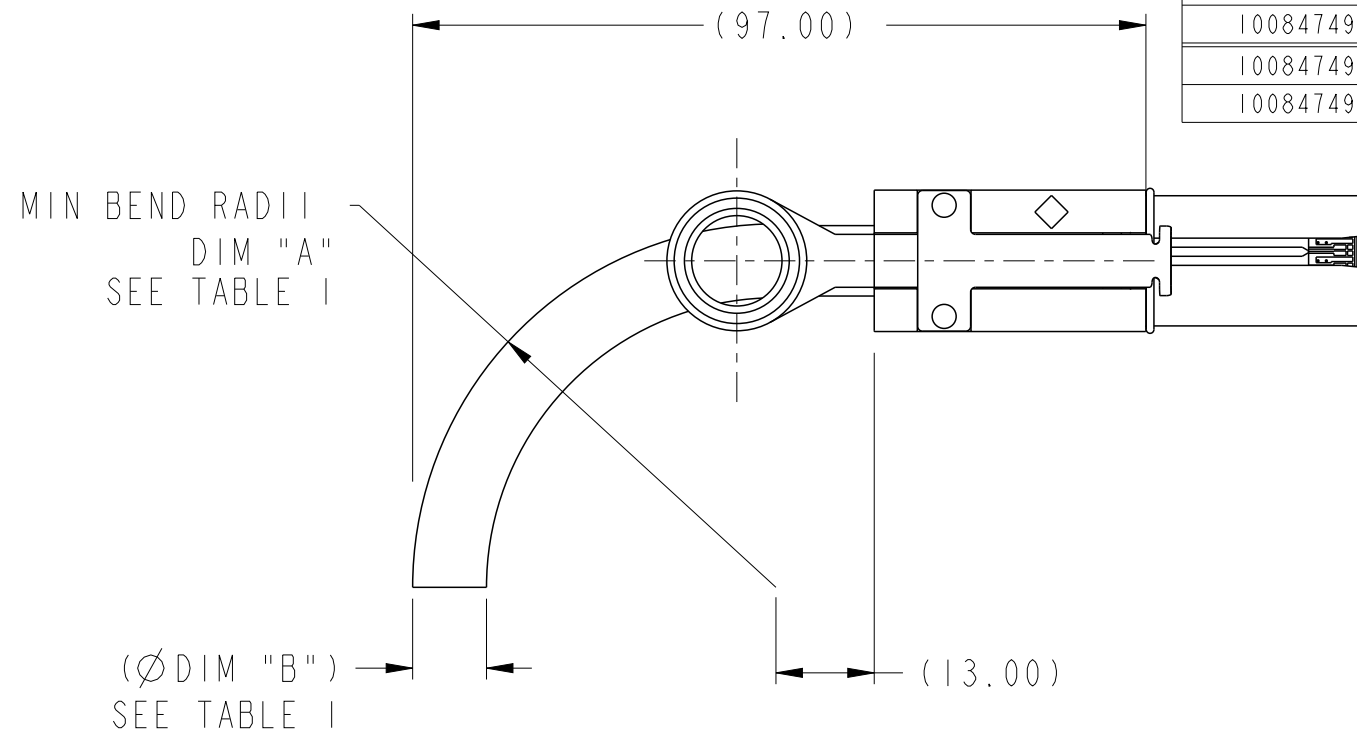
2

3

4

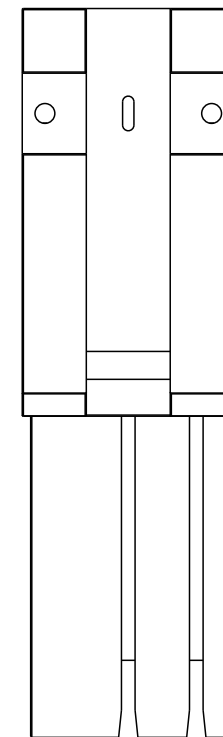
SATA

PRODUCT NUMBER SEE NOTE 4	DESCRIPTION	GAUGE	"DIM L" LENGTH	END P1 KEY SLOT	END P2 KEY SLOT	IDENTIFIER
10084749-M060004LF	X4 SATA CABLE ASSEMBLY	24 AWG	6M	1,4	1,4	X CABLE, SATA
10084749-N020004LF	X4 SATA CABLE ASSEMBLY	26 AWG	2M	1,4	1,4	
10084749-N040004LF	X4 SATA CABLE ASSEMBLY	26 AWG	4M	1,4	1,4	
10084749-N050004LF	X4 SATA CABLE ASSEMBLY	26 AWG	5M	1,4	1,4	
10084749-P010004LF	X4 SATA CABLE ASSEMBLY	28 AWG	1M	1,4	1,4	
10084749-P030004LF	X4 SATA CABLE ASSEMBLY	28 AWG	3M	1,4	1,4	
10084749-M060005LF	X4 SATA CABLE ASSEMBLY	24 AWG	6M	7	7	M CABLE, SATA
10084749-N020005LF	X4 SATA CABLE ASSEMBLY	26 AWG	2M	7	7	
10084749-N040005LF	X4 SATA CABLE ASSEMBLY	26 AWG	4M	7	7	
10084749-N050005LF	X4 SATA CABLE ASSEMBLY	26 AWG	5M	7	7	
10084749-P010005LF	X4 SATA CABLE ASSEMBLY	28 AWG	1M	7	7	
10084749-P030005LF	X4 SATA CABLE ASSEMBLY	28 AWG	3M	7	7	

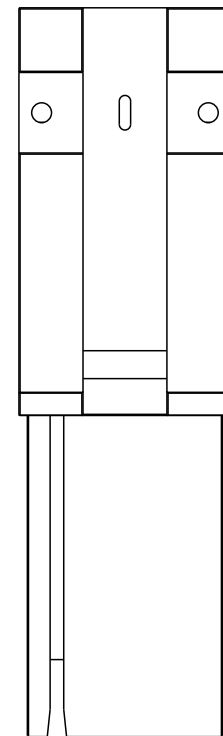


BEND RADIUS
(24 AWG SHOWN)

TABLE 1		
CABLE	DIM "A"	DIM "B"
24 AWG	(R46.9)	(Ø 9.5mm)
26 AWG	(R41.7)	(Ø 8.3mm)
28 AWG	(R37.7)	(Ø 7.6mm)



KEY SLOT 1 & 4
X CABLE, SATA



KEY SLOT 7
M CABLE, SATA

SATA KEYING OPTIONS

spec ref ---				dr		Stu Stoner	2008/02/05		projection				size A3		scale 1:1		
tolerance std --- --- TOLERANCES UNLESS OTHERWISE SPECIFIED				eng		Tom Feng	2014/09/24						ecn no ELX-N-18883-1				
				chr		-	-										
								appr		Delhly Liu	2014/09/24		product family		MiniSAS/SATA		rel level Released
surface		linear		0.X		±0.3				title FINAL CABLE ASSEMBLY-ALTERNATE CABLE Mini SAS 2.0/SATA (CRKT)				dwg no 10084749		rev H	
				0.XX		±0.10											
				0.XXX		±0.050				www.fci.com		cat. no. -		Product - Customer Drw			
angular		0°		±2°													

2

3

PDS: Rev :H

STATUS:Released

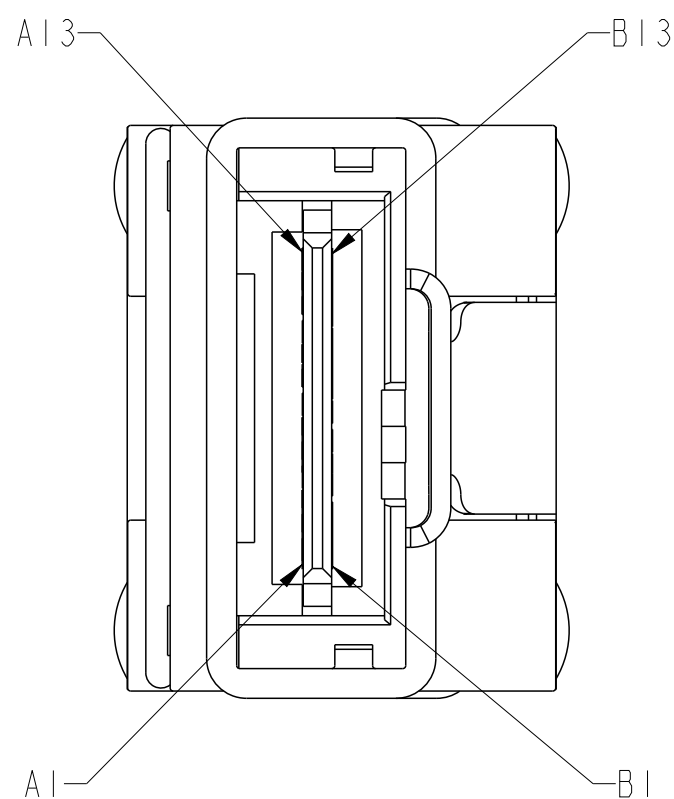
Printed: Sep 24, 2014

A

B

C

D



WIRING LIST SEE NOTE 7

P1	GND	A1	—	B1	GND	P2
	Rx 0+	A2	←	B2	Tx 0+	
	Rx 0-	A3		B3	Tx 0-	
	GND	A4	—	B4	GND	
	Rx 1+	A5	←	B5	Tx 1+	
	Rx 1-	A6		B6	Tx 1-	
	GND	A7	—	B7	GND	
	Rx 2+	A8	←	B8	Tx 2+	
	Rx 2-	A9		B9	Tx 2-	
	GND	A10	—	B10	GND	
	Rx 3+	A11	←	B11	Tx 3+	
	Rx 3-	A12		B12	Tx 3-	
	GND	A13	—	B13	GND	
	GND	B1	—	A1	GND	
	Tx 0+	B2	→	A2	Rx 0+	
	Tx 0-	B3		A3	Rx 0-	
	GND	B4	—	A4	GND	
	Tx 1+	B5	→	A5	Rx 1+	
	Tx 1-	B6		A6	Rx 1-	
	GND	B7	—	A7	GND	
	Tx 2+	B8	→	A8	Rx 2+	
	Tx 2-	B9		A9	Rx 2-	
	GND	B10	—	A10	GND	
	Tx 3+	B11	→	A11	Rx 3+	
Tx 3-	B12		A12	Rx 3-		
GND	B13	—	A13	GND		

spec ref				---		dr		Stu Stoner		2008/02/05		projection		MM		size		A3		scale		1:1	
tolerance std				TOLERANCES UNLESS OTHERWISE SPECIFIED		eng		Tom Feng		2014/09/24		chr		-		ecr no		ELX-N-18883-1		rel level		Released	
---						appr		Delhly Liu		2014/09/24		product family		MiniSAS/SATA									
surface				- ✓		linear		0.X		±0.3		FCI		title		FINAL CABLE ASSEMBLY-ALTERNATE CABLE		dwg no		10084749		rev	
								0.XX		±0.10													
								0.XXX		±0.050													
---						angular		0°		±2°		www.fci.com		cat. no.		-		Product - Customer Drw		sheet 4 of 6			



Copyright FCI.



www.fci.com

NOTES:

- ① - MATERIAL:
 BACK SHELLS: ZINC DIECAST
 PULL TAB: MOLDED THERMOPLASTIC
 LATCH: STAINLESS STEEL
 JET MELT: POLYAMIDE POLYMER
- 2 - ELECTRICAL PERFORMANCE PER CURRENT REVISION
 OF SERIAL ATA, T10/I760-D (SAS-2 REQUIREMENTS).
- ③ - THIS PRODUCT MEETS THE RESTRICTION OF HAZARDOUS SUBSTANCES IN
 ELECTRICAL AND ELECTRONIC EQUIPMENT (RoHS) DIRECTIVE (2002/95/EC)

4 - PART NUMBER DESCRIPTION

10084749 - X XX XX XX LF

LEAD FREE (SEE NOTE 3 AND 10)

KEY SLOT

01: KEY SLOT 2,4

02: KEY SLOT 4,6

03: KEY SLOT 2,4,6

04: KEY SLOT 1,4

05: KEY SLOT 7

06: P1= KEY SLOT 2,4 P2= KEY SLOT 4,6

LENGTH

XX= METERS, XX=CENTIMETERS

0100 = 01 METERS, 00 CENTIMETERS ("DIM L")

GAUGE

M: 24 AWG

N: 26 AWG

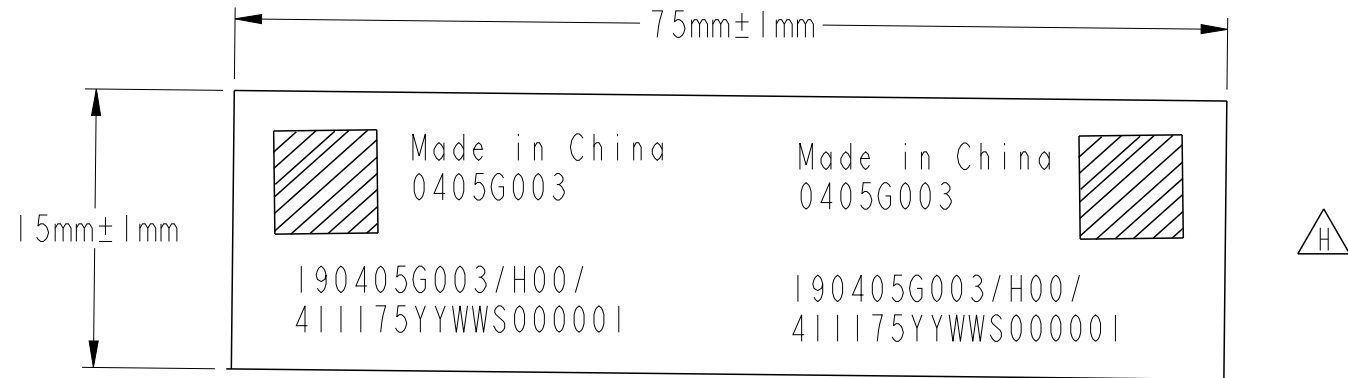
P: 28 AWG

- ⑤ - UNLESS OTHERWISE SPECIFIED ASSEMBLED LENGTH TOLERANCE IS TO BE:
- < 1 METER = $\pm 25.0\text{mm}$
- > 1 METER TO 6 METERS = $\pm 2\%$ OF "DIM L"

spec ref ---				dr		Stu Stoner	2008/02/05		projection		MM		size		A3	scale		1:1							
tolerance std		TOLERANCES UNLESS OTHERWISE SPECIFIED				eng		Tom Feng	2014/09/24						ecn no				ELX-N-18883-1						
---						chr		-	-																
---						appr		Delhly Liu		2014/09/24									product family				MiniSAS/SATA		rel level
surface		linear		0.X		±0.3				title		FINAL CABLE ASSEMBLY-ALTERNATE CABLE						dwg no		10084749		rev		H	
				0.XX		±0.10																			
				0.XXX		±0.050																			
---		angular		0°		±2°		www.fci.com		cat. no.		-		Product - Customer Drw						sheet 5 of 6					

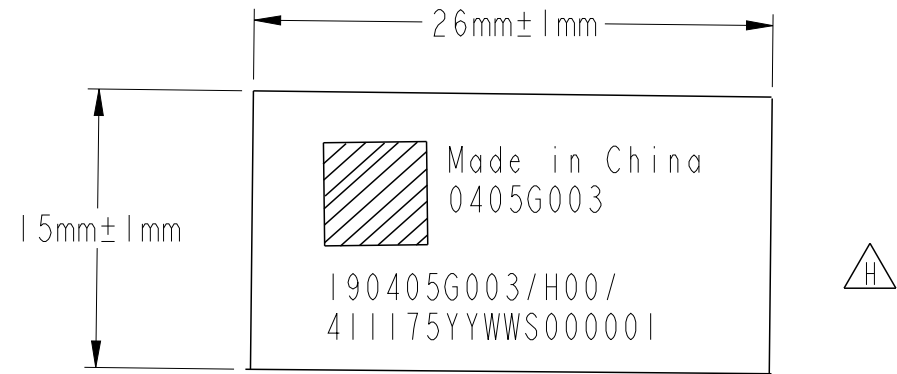
NOTES CONTINUED:

- ⑥ - UNLESS OTHERWISE SPECIFIED LABEL POSITION IS TO BE 100mm FROM REAR OF CONNECTOR.
LABEL DETAILS:



FONT SHALL BE CLEARLY VISIBLE AND BLACK IN COLOR.

- ⑦ - ALL CABLE ASSEMBLIES SHALL BE 100% TESTED FOR CONTINUITY AS DEFINED IN WIRING LIST.
- ⑧ - UNLESS OTHERWISE SPECIFIED ALL CABLE ASSEMBLIES SHALL BE 100% HI-POT TESTED BY APPLYING 300V DC FOR A MINIMUM OF 10ms, UNLESS ACTIVE COMPONENTS ARE USED IN THIS ASSEMBLY.
- 9 - OTHER TESTING PERFORMED AS REQUIRED BY PRODUCT SPECIFICATION: GS-12-548.
- 10 - PACKAGING OF LEAD FREE PRODUCTS MEETS LABELING AND PACKAGING PER SPECIFICATION GS-14-920.
PACKAGE CABLE ASSEMBLIES PER GS-14-1272.
ADD DUST COVER ON MINI-SAS CONNECTOR WHEN PACKAGE FOR SHIPPMENT
NEED STICK BELOW LABEL ON PE BAG.



11. THIS DIMENSION IS A FINISHED PRODUCT LENGTH.
12. A "△" SYMBOL WILL BE NEXT TO ANY DIMENSION, VIEW, OR NOTE WHICH HAS BEEN MODIFIED WITH THE CURRENT DRAWING REVISION. THE CURRENT REVISION WILL BE SHOWN IN THE SYMBOL.

spec ref		---		dr		Stu Stoner		2008/02/05		projection		MM		size		A3		scale		1:1							
tolerance std		TOLERANCES UNLESS OTHERWISE SPECIFIED		eng		Tom Feng		2014/09/24						ecn no		ELX-N-18883-1											
---				chr		-																					
---				appr		Delhy Liu		2014/09/24						product family		MiniSAS/SATA		rel level		Released							
surface				linear		0.X		±0.3				title		FINAL CABLE ASSEMBLY-ALTERNATE CABLE		dwg no		10084749		rev		H					

		angular		0°		±2°		www.fci.com		cat. no.		-		Product - Customer Drw		sheet 6 of 6											