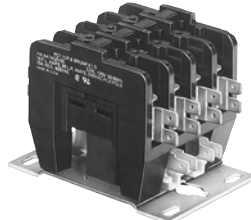




P31



P41

# P31/P41 series

## Definite Purpose Magnetic Contactor

### 16 to 40 Amp Full Load 20 to 50 Amp Resistive

File E25575

File LR15734

Users should thoroughly review the technical data before selecting a product part number. It is recommended that users also seek out the pertinent approvals files of the agencies/laboratories and review them to ensure the product meets the requirements for a given application.

#### Features

- 3 phase and single phase switching.
- Integral dual QC terminals.
- Class "B" coil insulation.
- Variety of main terminals.
- Applications include HVAC industrial control.
- Direct activated DC coils.

#### Contact Data @ 25°C

##### Main Contacts:

**Arrangements:** 3 Form X (3PST-NO-DM) and 4 Form X (4PST-NO-DM).

**Ratings:** See Main Contact Ratings Table.

**Material:** Silver-cadmium oxide.

**Initial Breakdown Voltage:** 2,200V rms minimum between all elements and between all elements to ground.

**Expected Life:** 200,000 operations at motor load.  
500,000 operations, mechanical.

**Minimum Contact Data:** 3A @ 120VAC.

#### Initial Dielectric Strength

**Initial Breakdown Voltage:** 2,200V rms minimum between all elements and between all elements and ground.

#### Main Contact Ratings @ 25°C, 60 Hz. AC (Per Pole)

	@ 240VAC		@ 480VAC		@ 600VAC		
	LRA	FLA	LRA	FLA	LRA	FLA	RES
P31C	150	25	125	25	100	25	35
P31E	240	40	200	40	160	40	50
P41B	120	20	100	20	80	20	25
P41C	150	25	125	25	100	25	35

#### Ordering Information

Typical Part No. ▶

**P41 C 47 D HO 1 03**

##### 1. Type:

P31 = 3 Pole P41 = 4 Pole

##### 2. Contact Rating

C = 25 Amp E = 40 Amp (40A rating only offered on P31)

##### 3. Contact Arrangement:

42 = 3 Form X (3PST-NO-DM) 47 = 4 Form X (4PST-NO-DM) P41 only

##### 4. Coil Input:

D = Direct Current (Direct Operated)

##### 5. Coil Voltage:

FO = 12VDC, with coil cover HO = 24VDC, with coil cover

##### 6. Coil Terminal Location And Marking (See Terminal Location and Marking Diagram):

1 = Dual .250" (6.35mm) quick connect

##### 7. Contact Terminals (See Contact Terminal Options Diagram):

03 = Dual .250" (6.35mm) quick connect turned up per Figure 03 (25 amps, Max.)

05 = #10-32 binder head screw with dual .250" (6.35mm) quick connect per Figure 05

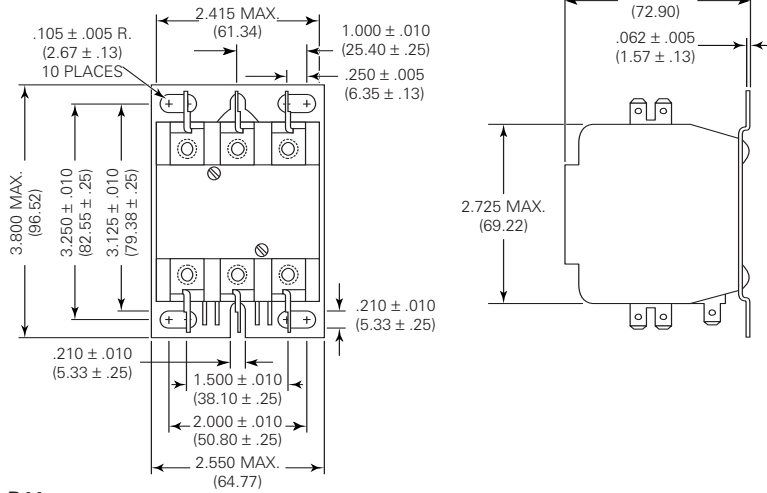
08 = Aluminum box lug (for #4-#14 copper wire) with dual .250" (6.35mm) quick connect per Figure 08

**Our authorized distributors are more likely to maintain the following items in stock for immediate delivery.**

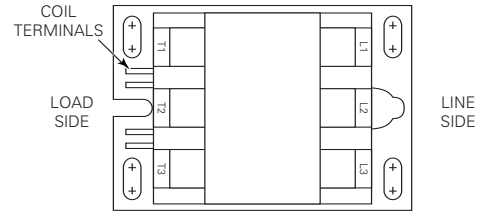
None at present.

**Outline Dimensions**

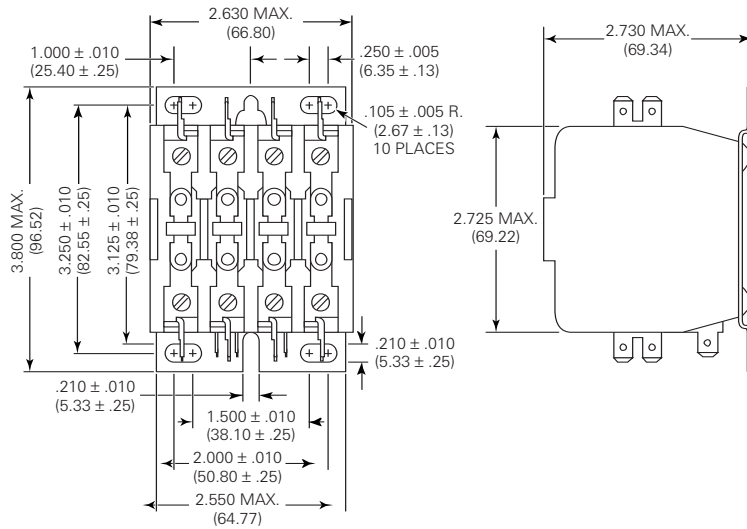
**P31**



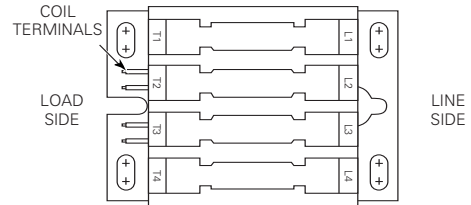
**Top View**



**P41**

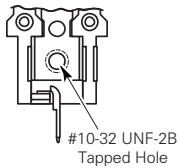


**Top View**

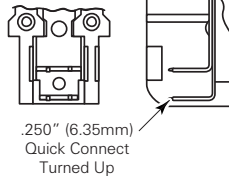


**Contact Terminal Options**

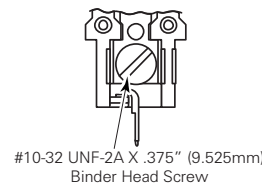
**Figure 02**



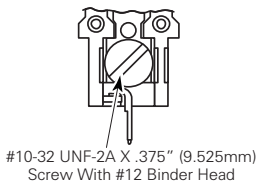
**Figure 03**



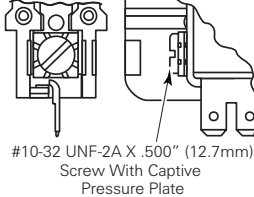
**Figure 05**



**Figure 06**



**Figure 07**



**Figure 08**

