

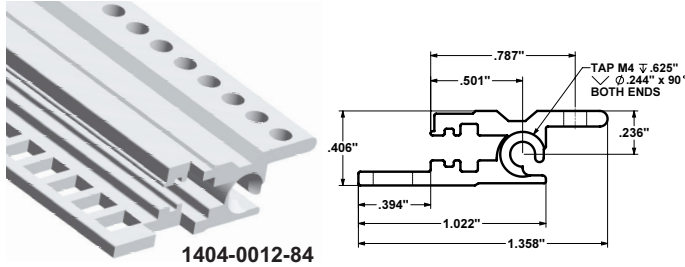
DIN-Based VectorPak™ Subracks



Accessories

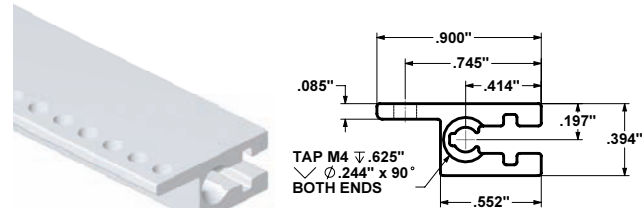
- Clear Chem-film finish; Aluminum 6066-T6
- IEEE 1101.10 & 1101.11 compliant

Front Horizontal Extrusion with 10MM extended lip for Type IV or Type VII extractor



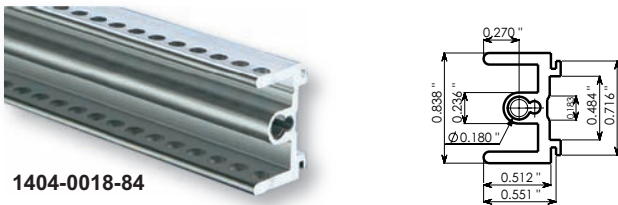
1404-0012-84

Rear Horizontal Extrusion



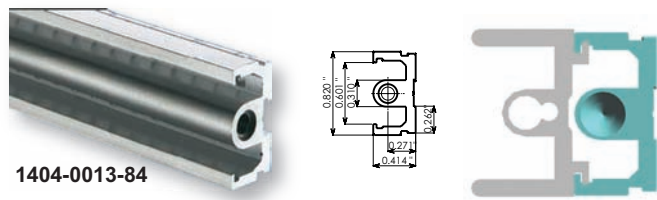
1440-0013-84

Rear Center Horizontal Rail to accommodate rear upper/lower CG3 card guides



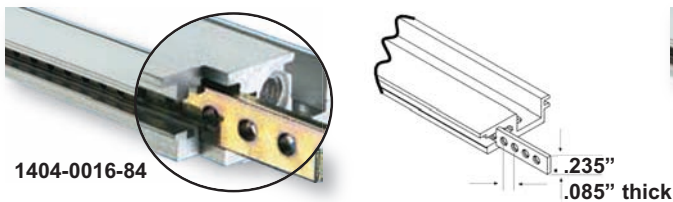
1404-0018-84

Rear Center Horizontal Rail slides (telescopes) over 1404-0013-84 if 6U is to be divided into 2 3U



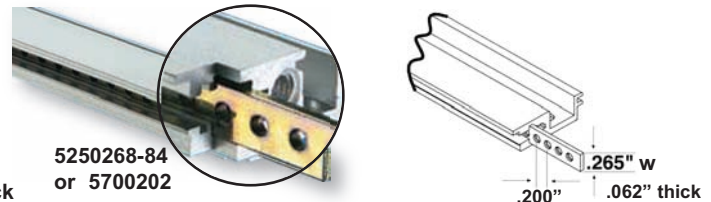
1404-0013-84

Nut Strips For Front Horizontal Rails, M2.5 Threaded Holes on 1HP Centers



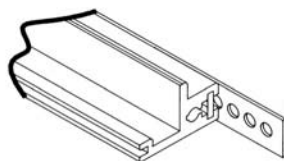
1404-0016-84

Nut Strips For Rear Horizontal Rails, M2.5 Threaded Holes on 1HP Centers



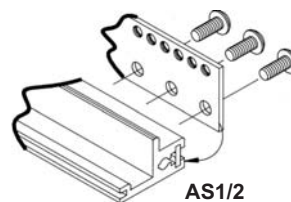
5250268-84 or 5700202

Insulation Strip: 0.030" thick PVC to isolate back-planes from rear horizontal extrusions. Only available in 84HP width/length, easily cuts with paper shears for exact size.

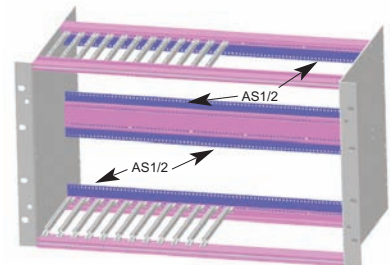


5250998-84

Adapter Plate: AS1/2 set of DIN Adapters ("Z"-rails) to reduce 3U rear section for direct DIN connector mounting. Set includes two DIN adapter strips, 84HP wide, 12 M2.5 screws with spring washers



AS1/2



Choose Part Type Choose any HP (4HP min) (1HP = 0.2")

1404-0012-	84 = 17.00" (431mm)
1440-0013-	63 = 12.80" (325.1mm)
1404-0013-	42 = 8.60" (218.4mm)
1404-0018-	21 = 4.40" (218.4mm)
1404-0016-	
5250268-	
5250998-	

www.vectorelect.com



800-423-5659