

PART NAME: KNOB SCALE: 1:1 DATE: 12/12/07 DR. BY JAM

DAVIES MOLDING COMPANY
CAROL STREAM, ILLINOIS 60188

P/N 1450DR

THIS DRAWING IS THE PROPERTY OF DAVIES MOLDING COMPANY, IS SUBMITTED SOLELY AS A DESIGN OR ENGINEERING PROJECT. WE ACCEPT NO RESPONSIBILITY WHATSOEVER FOR THE PRACTICAL APPLICATION OF THE PIECES MADE TO THIS DESIGN.

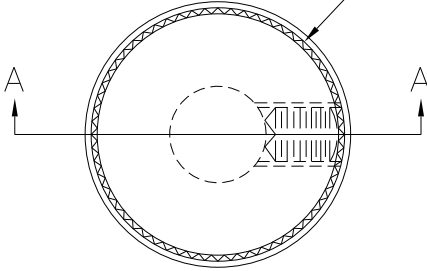
BASE PART 1450-15

SET SCREW 10328

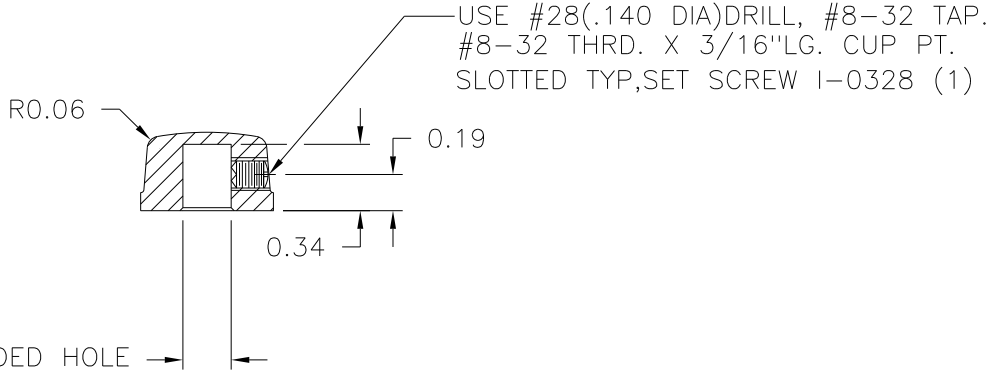
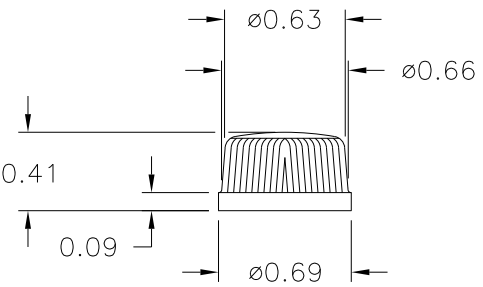
SCALE 2:1

(A)

KNURL 60 SEPRATION
EQUALLY SPACED AT 6° APART



SECTION A-A



USE #28(.140 DIA)DRILL, #8-32 TAP.
#8-32 THRD. X 3/16"LG. CUP PT.
SLOTTED TYP, SET SCREW I-0328 (1)

ø0.258/0.252 MOLDED HOLE

MATERIAL: MUP32 PERSTORP UREA FORMALDEHYDE (V32)
COLOR: IVORY

TOLERANCES: UNLESS OTHERWISE SPECIFIED	DO NOT SCALE DRAWING			
DECIMALS: X.XXX ± .005 X.XX ± .015	MM: X.XX ± 0.15MM X.X ± 0.4MM	A	ADDED BASE PART	JAM 5/29/14
		-	WAS SK1450-02	JAM 12/12/07
FRACTIONS ± 1/64	ANG. ± 1°	CHANGES		