



# PRODUCT DATASHEET

## Tina3 series

last update 5/11/2012

### DETAILS

Product Number	CA13180_TINA3-OO
Family	Tina3
Type	Assembly
Color	white
Diameter	16.1 mm
Height	6.8 mm
Style	round
Optic Material	PMMA
Holder Material	PC
Fastening	tape
Status	ready
ROHS Compliant	Yes
Date Updated	5/11/2012

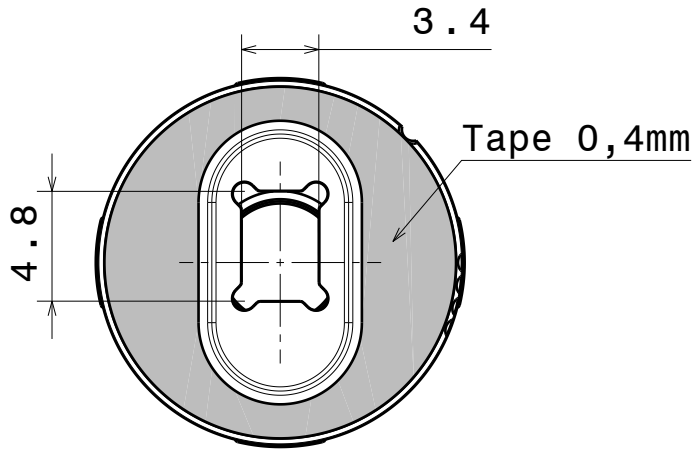


### OPTICAL PROPERTIES

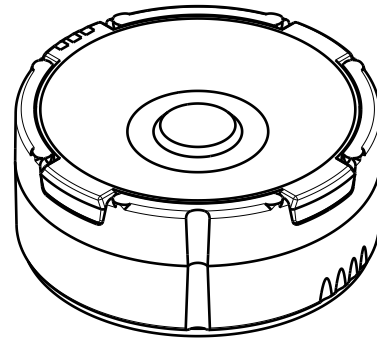
LED	Viewing Angle	Light Beam	Efficiency	cd/lm	Connector
LUXEON Rebel ES	57+40 deg	OO-class	91 %	1.100	-

D C B A

4

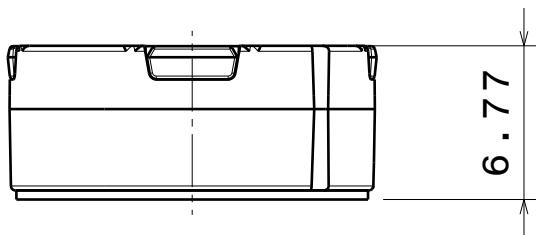


Bottom view



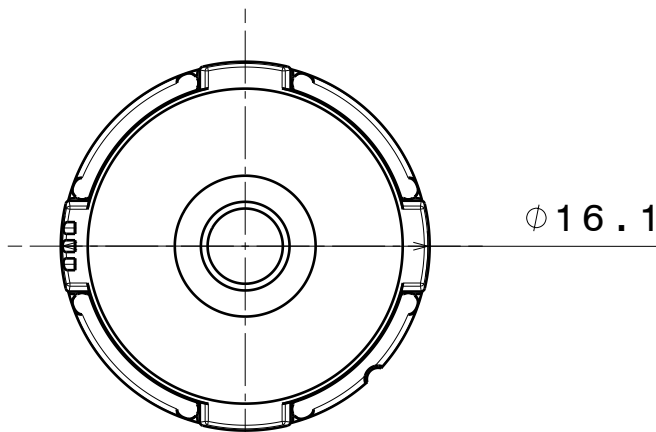
Isometric view

3



Front view

2



Top view

Materials

Lens: PMMA

Holder: PC

Tape: PU Foam

4

3

2

This drawing is our property.  
It can't be reproduced  
or communicated without  
our written agreement.



Ledil Oy  
Salorankatu 10  
FIN 24240 SALO  
Finland

DRAWING TITLE Mechanical Drawing

DRAWN BY  
as

DATE  
21.9.2012

TINA3-RE-ES

CHECKED BY  
VS

DATE  
-

SIZE  
A4

PART NUMBER

REV  
001

DESIGNED BY  
-

DATE  
-

SCALE

3:1

WEIGHT

-

SHEET

1/1

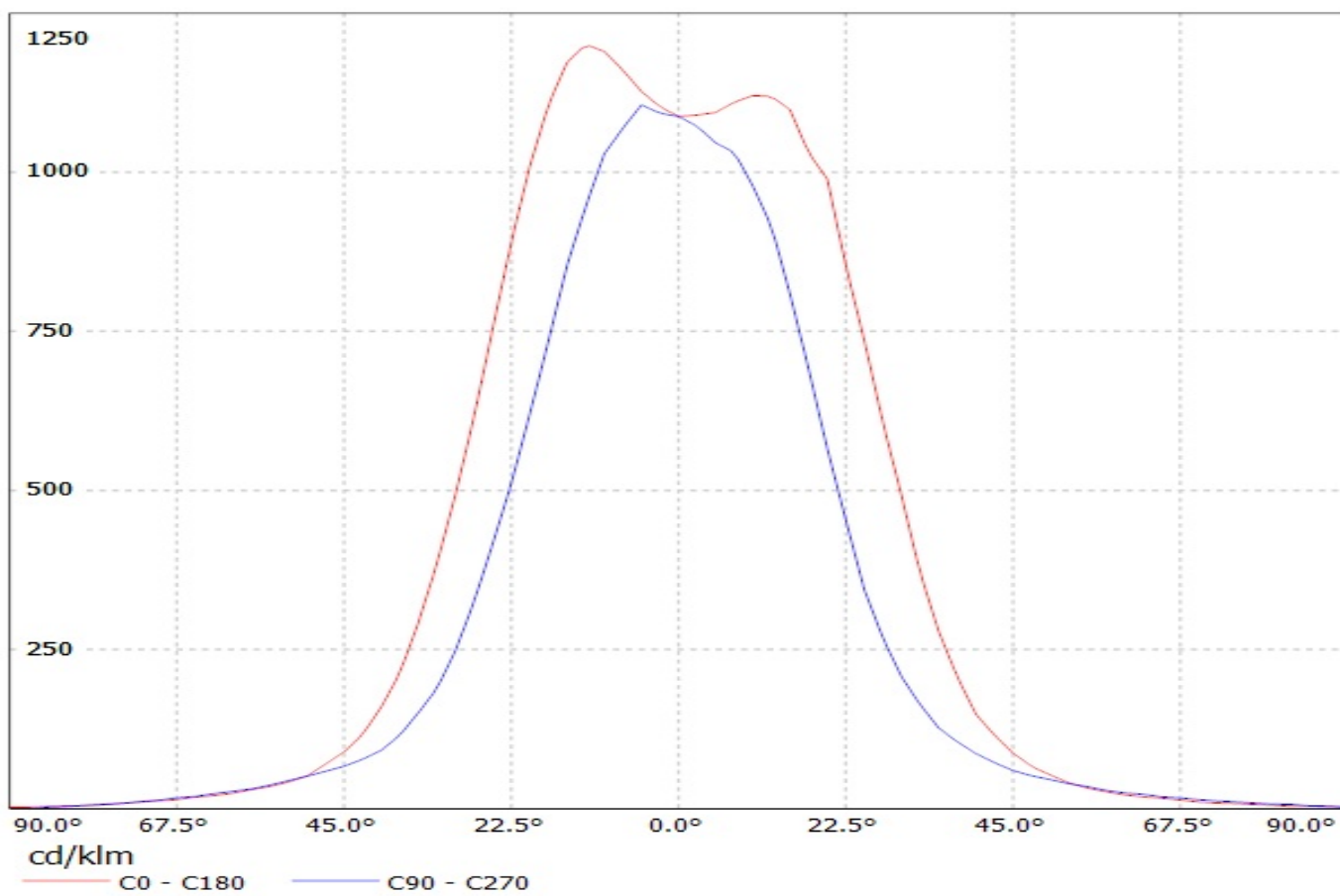
1

1

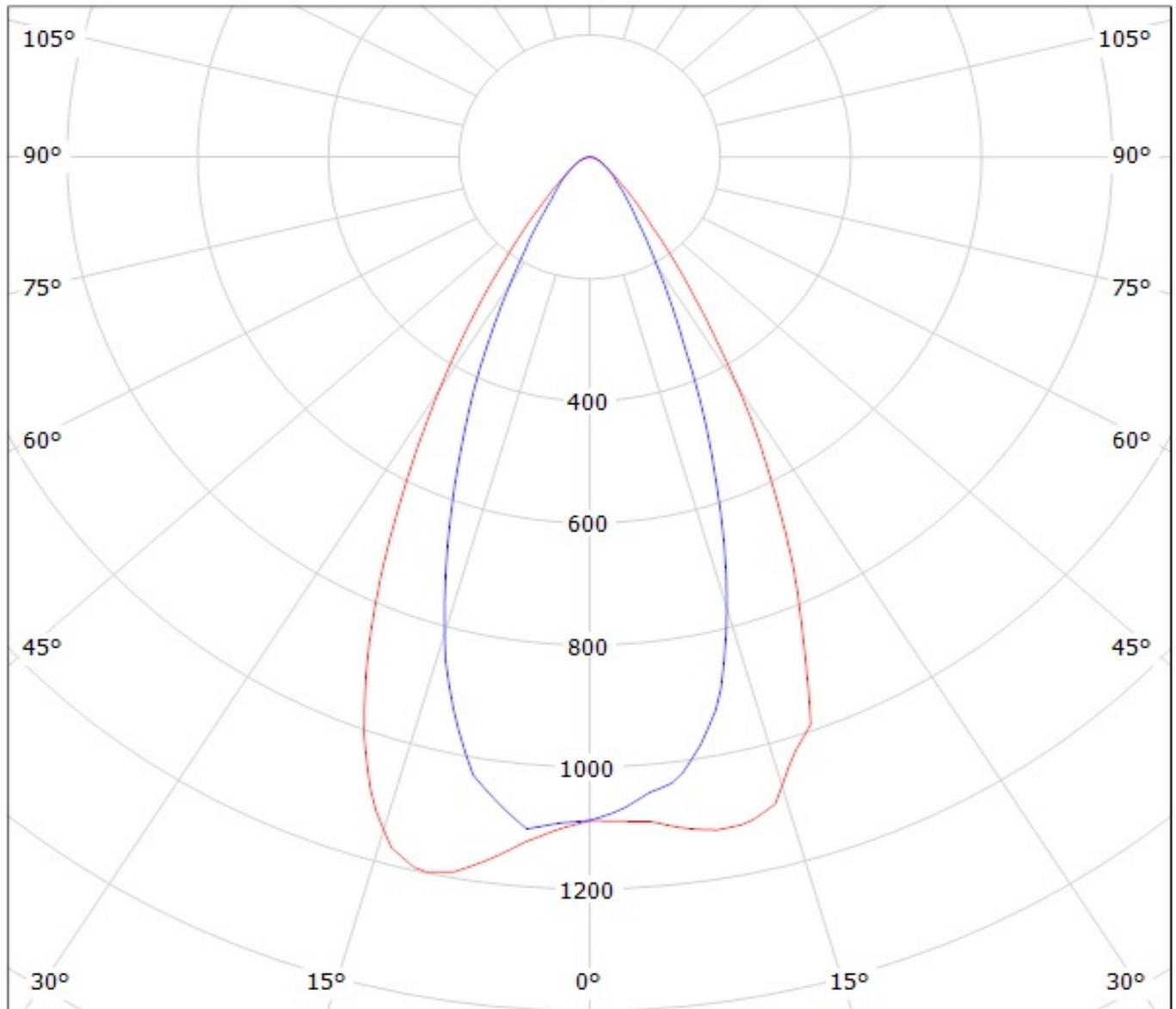
D

A

Luminaire: Ledil Oy CA13180\_TINA3-OO (Luxeon Rebel-ES 92lm @ 250mA) Efficiency=91%  
Lamps: 1 x Luxeon Rebel-ES 92lm @ 250mA



Luminaire: Ledil Oy CA13180\_TINA3-00 (Luxeon Rebel-ES 92lm @ 250mA) Efficiency=91%  
Lamps: 1 x Luxeon Rebel-ES 92lm @ 250mA



cd/klm  
— C0 - C180    — C90 - C270

**NOTE: The typical divergence will be changed by different color, chip size and chip position tolerance. The typical total divergence is the full angle measured where the luminous intensity is half of the peak value.**

### **GENERAL INFORMATION**

- Product series especially designed & optimized for series of LEDs.
- Special care taken to make light distribution as uniform as possible.
- Fastening to heat sink with a PU foam adhesive tape of automotive grade. Please find fastening details by clicking link: [http://www.ledil.com/datasheets/DataSheet\\_TAPE.pdf](http://www.ledil.com/datasheets/DataSheet_TAPE.pdf)

**NOTE 1: We advise customer to ensure the suitability and sufficiency of the bond in the end product. For example, mechanical stress, vibration and holes on the surface of the circuit board weaken the strength of the tape.**

**NOTE 2: Assembly to the surface must be made straight, so the tape bonds constant and balanced with fastening surface. Slanted assembly might cause unbalanced bond to the surface. All surfaces where tape is applied must be clean, dry and free from grease and dirt.**

**If cleaning of PCB surfaces is needed, please follow strictly the cleaning instructions of your LED manufacturer - this is important as cleaning shall under no circumstances damage LEDs or other electronics components on the PCB.**

**Further note that optical components shall not be cleaned with any chemicals - only micro fiber cloth may be used to remove fingerprints or other traces from handling.**