

DETAILS

Product Number	CA13726_VERONICA-SQ-O
Family	Veronica
Type	Assembly
Color	clear
Diameter	22.5 + 22.5 mm
Height	12,2 mm
Style	round
Optic Material	PMMA
Holder Material	
Fastening	pin, tape
Status	ready
ROHS Compliant	Yes
Date Updated	6/08/2015



OPTICAL PROPERTIES

LED	Viewing	Light	Efficiency	cd/lm	Connector
	Angle	Beam			
XHP35 HD	45+20 deg	Oval	73 %	2.130	-
LUXEON M	45+28 deg	Oval	76 %	1.600	-
XB-H	45+16 deg	Oval	77 %	2.700	-
XHP35 HI	46+16 deg	Oval	75 %	2.700	-
LUXEON TX	46+16 deg	Oval	77 %	2.800	-
XP-E2	46+12 deg	Oval	80 %	3.500	-
XM-L	47+20 deg	Oval	80 %	2.300	-
XP-G2	47+14 deg	Oval	80 %	2.940	-
XT-E	47+16 deg	Oval	79 %	2.800	-
XM-L2	47+20 deg	Oval	80 %	2.300	-
NVSxx19B/NVSxx19C	47+18 deg	Oval	80 %	2.600	-
Oslon Square EC	47+17 deg	Oval	79 %	2.800	-
LH351Z	47+15 deg	Oval	78 %	2.800	-
LUXEON Rebel	47+15 deg	Oval	80 %	3.000	-
LUXEON Rebel ES	47+17 deg	Oval	80 %	2.700	-
LUXEON T	47+17 deg	Oval	80 %	2.800	-
LUXEON MZ	47+23 deg	Oval	73 %	2.000	-

D

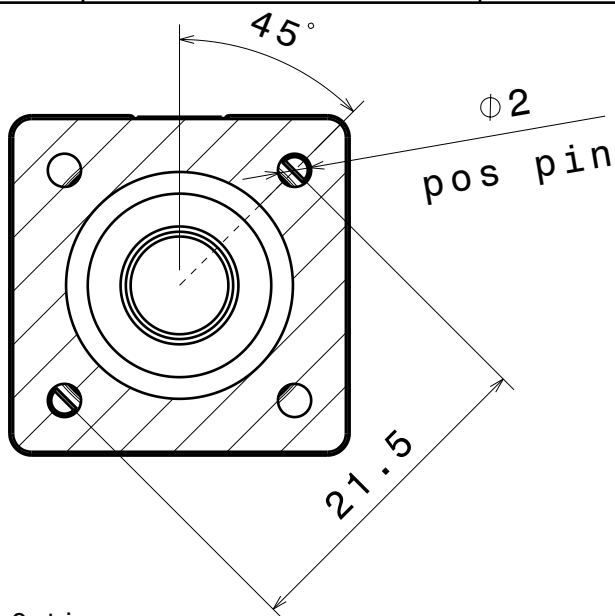
C

B

A

4

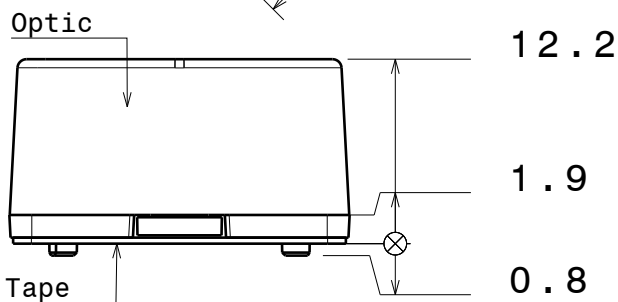
Bottom view



4

3

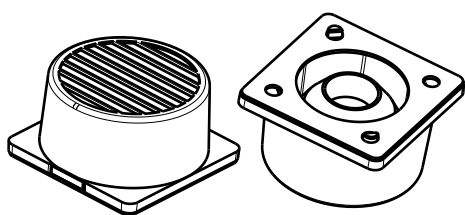
Front view



3

2

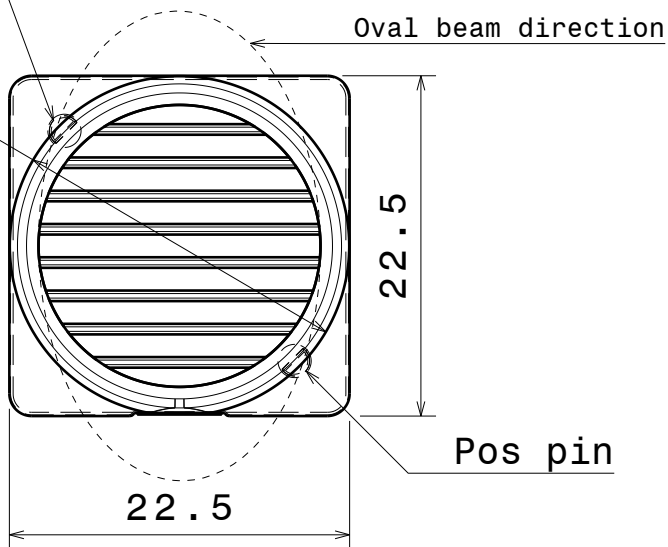
Top view



Pos pin

 $\varnothing 22.4$

Oval beam direction



2

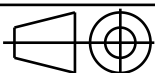
INDEX	DESCRIPTION	MATERIAL	COLOUR
1	VERONICA-SQ	PMMA / PU 2-sided adhesive foam tape	

Tolerances if not otherwise shown
According to DIN ISO 2768-1
Linear measures:
Up to 30mm class M, otherwise class C.
According to DIN ISO 2768-2
Form and position: class L

LEDiL

Ledil Oy
Salorankatu 10
FIN 24240 SALO
Finland

THIRD ANGLE PROJECTION:



DRAWING TITLE

VERONICA-SQ

This drawing is the property
of LEDiL Oy. It may not be
reproduced, copied or
communicated without a written
agreement with LEDiL Oy."

SIZE PART NUMBER

A4

SCALE 1:1 WEIGHT

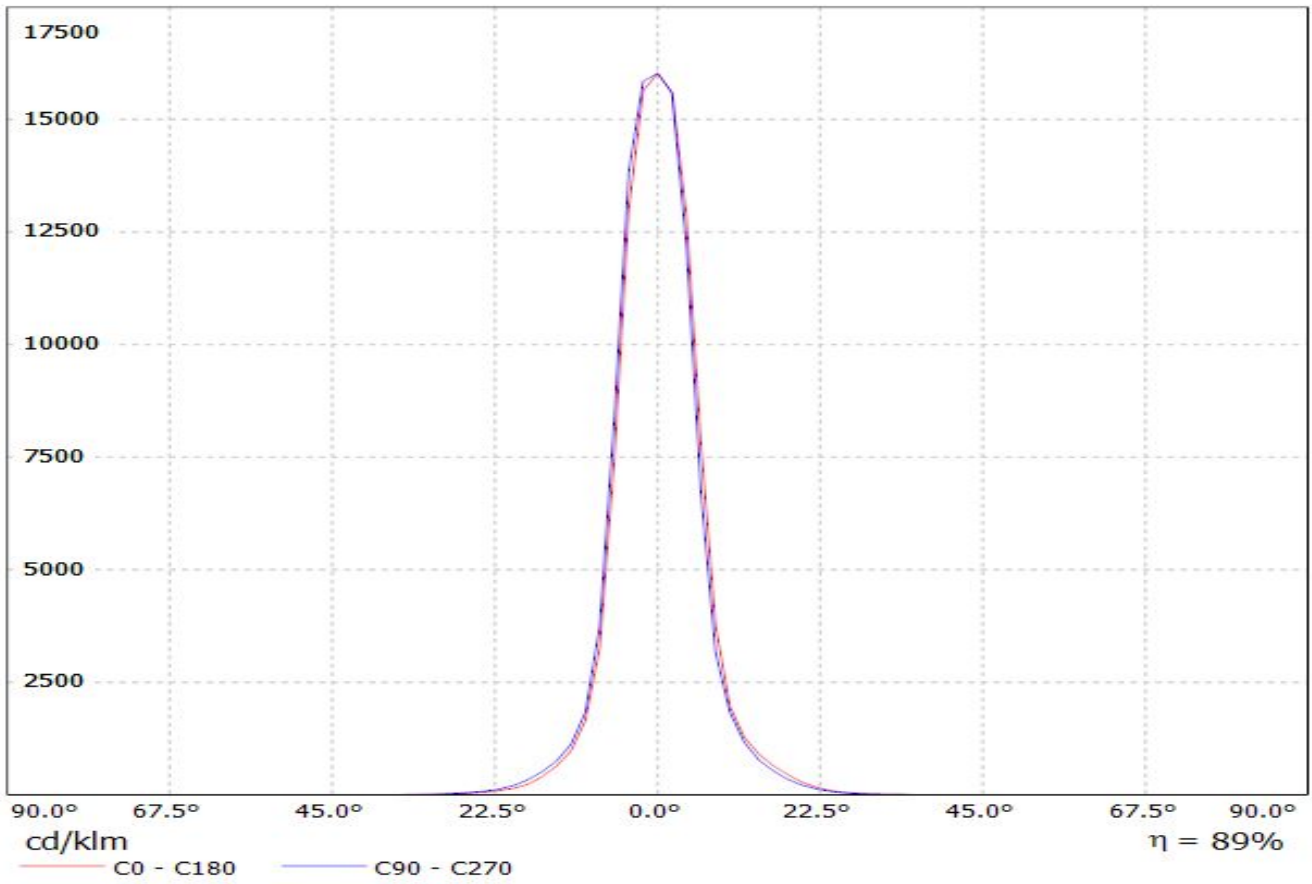
SHEET 1/1

D

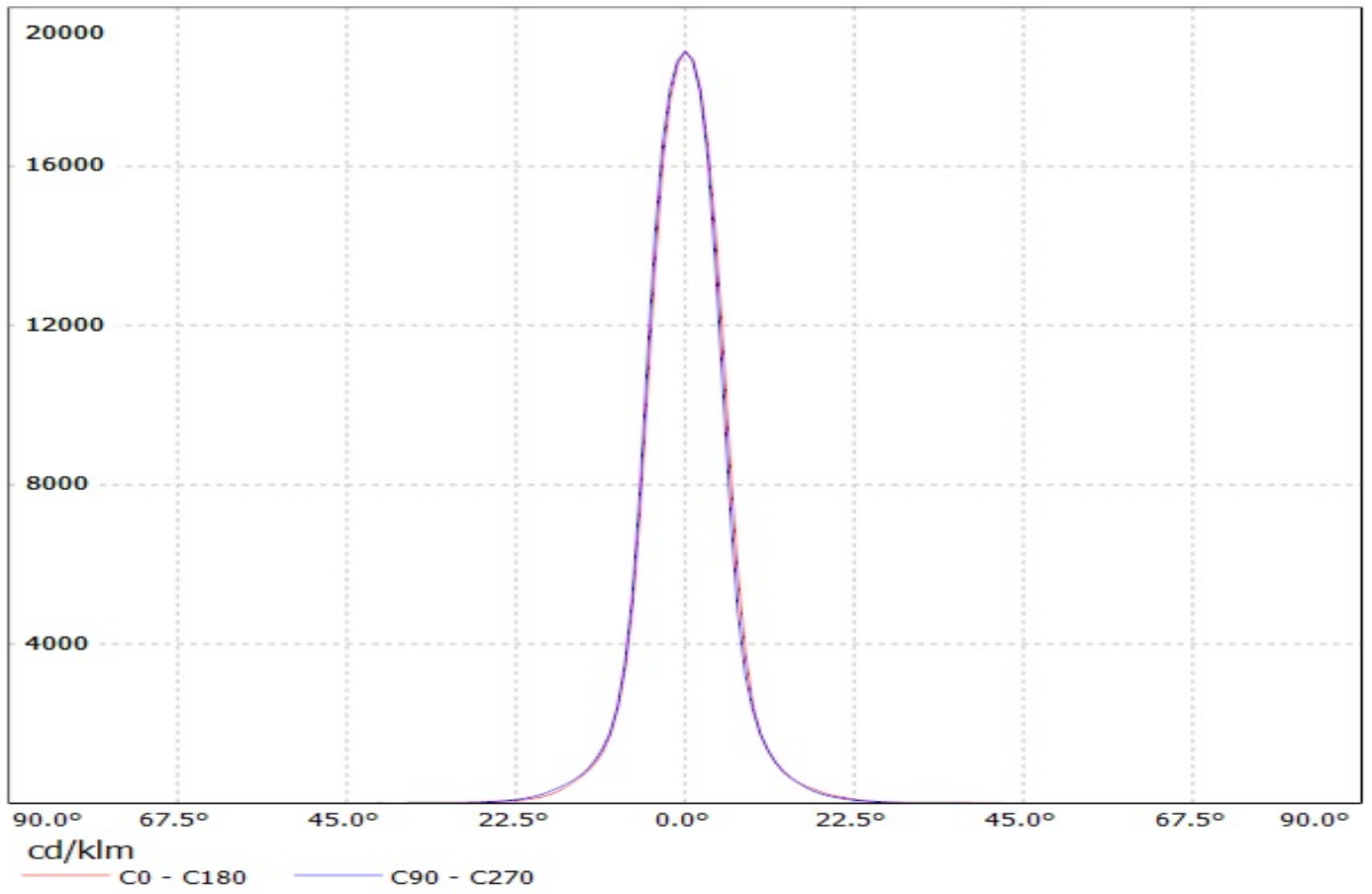
A

1

Luminaire: Ledil Oy CA13724_VERONICA-SQ-RS_(XB-H)
Lamps: 1 x Cree XB-H (XBHAWT-0-3C0-T50-0B-0001) 109lm @ 250mA CCT= P=0.73W I=250mA

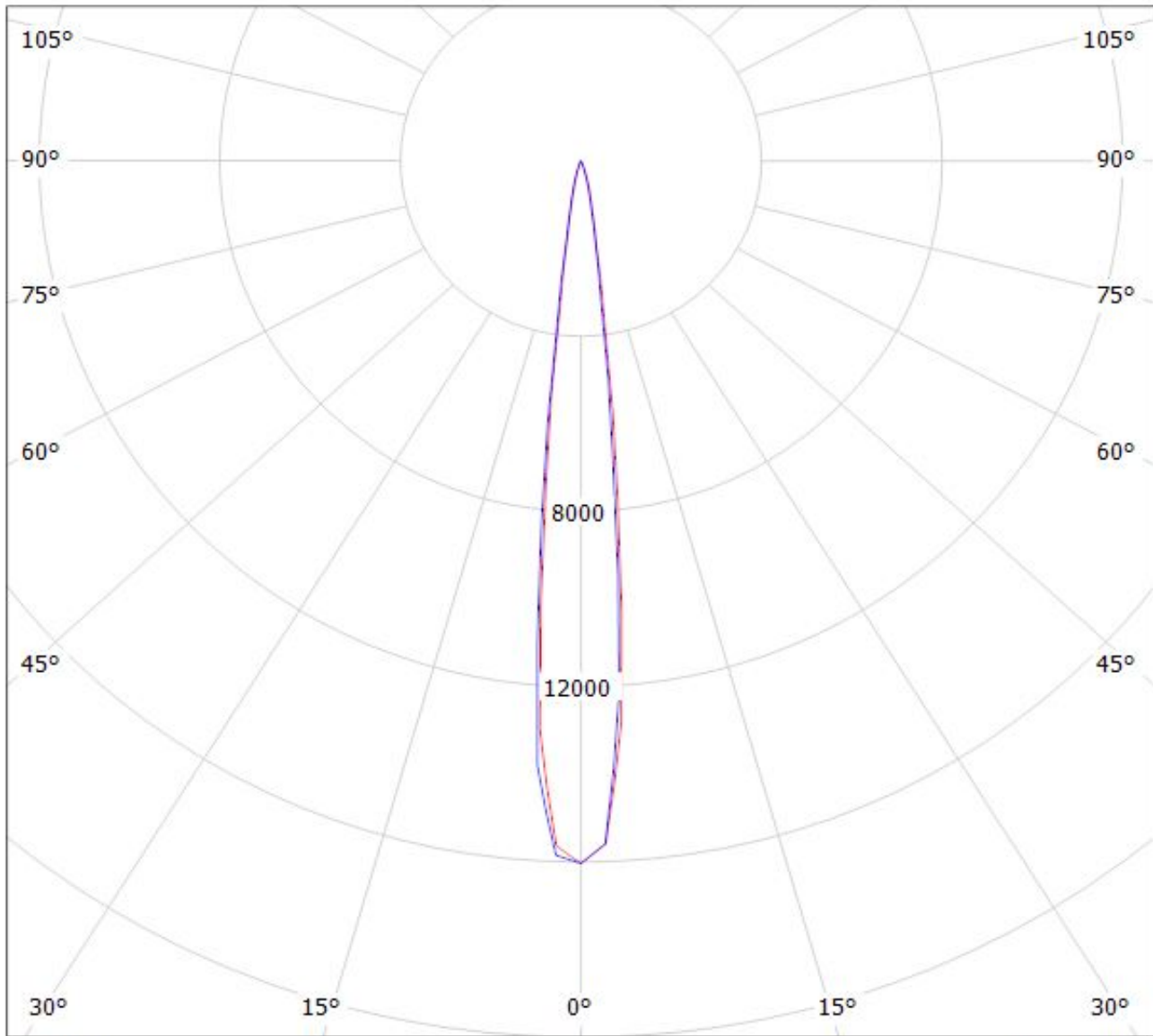


Luminaire: Ledil Oy CA13724_VERONICA-SQ-RS_(LH351Z) Efficiency=89%
Lamps: 1 x Samsung LH351Z (90.14lm @ 250mA) CCT=6500K P=0.7W I=250mA



Luminaire: Ledil Oy CA13724_VERONICA-SQ-RS_(XB-H)

Lamps: 1 x Cree XB-H (XBHAWT-0-3C0-T50-0B-0001) 109lm @ 250mA CCT= P=0.73W I=250mA



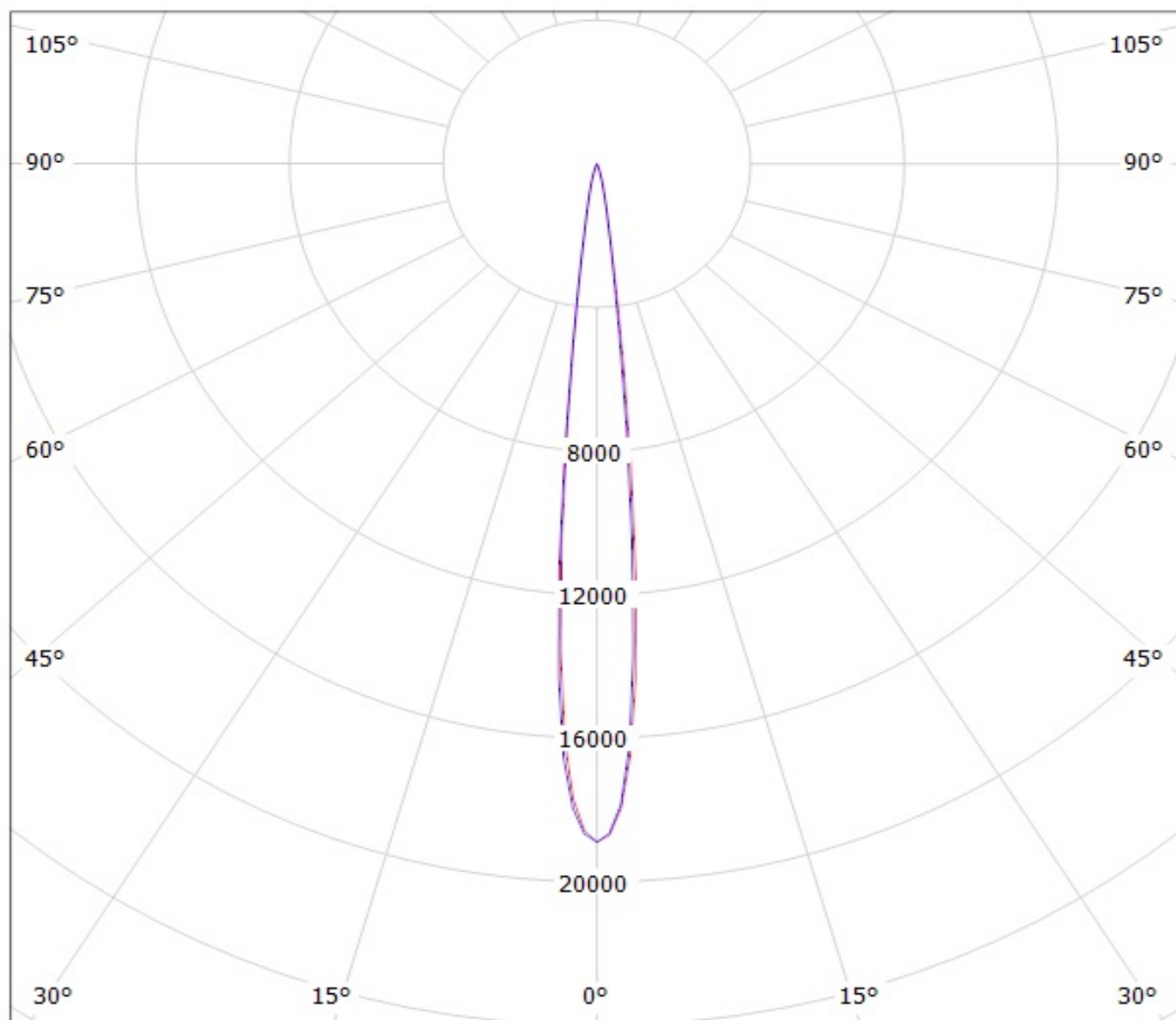
cd/klm

— C0 - C180

— C90 - C270

$\eta = 89\%$

Luminaire: Ledil Oy CA13724_VERONICA-SQ-RS_(LH351Z) Efficiency=89%
Lamps: 1 x Samsung LH351Z (90.14lm @ 250mA) CCT=6500K P=0.7W I=250mA



cd/klm

— C0 - C180

— C90 - C270

NOTE: The typical divergence will be changed by different color, chip size and chip position tolerance. The typical total divergence is the full angle measured where the luminous intensity is half of the peak value.