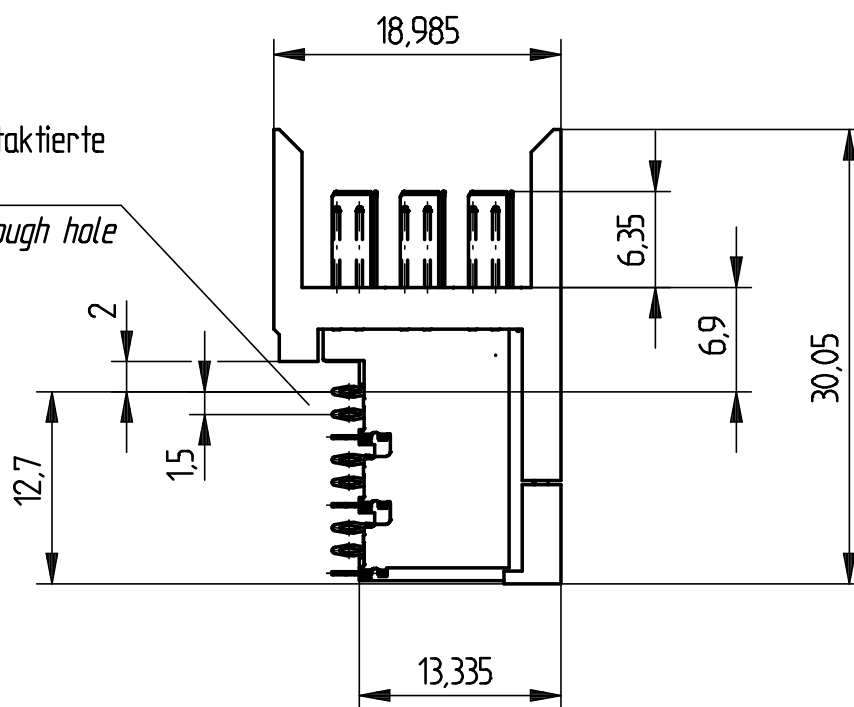
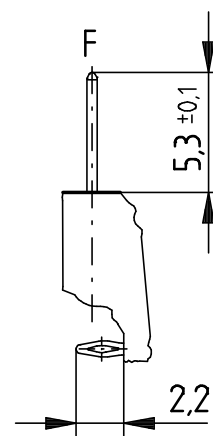
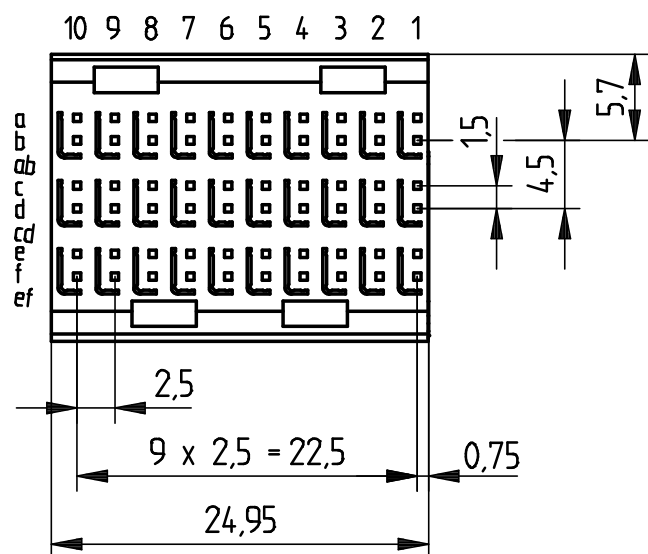


EN-Zone für durchkontaktierte  
Löcher  $\varnothing 0.6 \pm 0.05$   
*compliant zone for through hole*  
 $\varnothing 0.6 \pm 0.05$

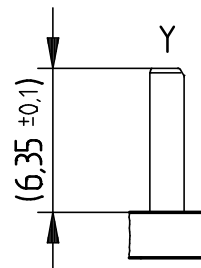
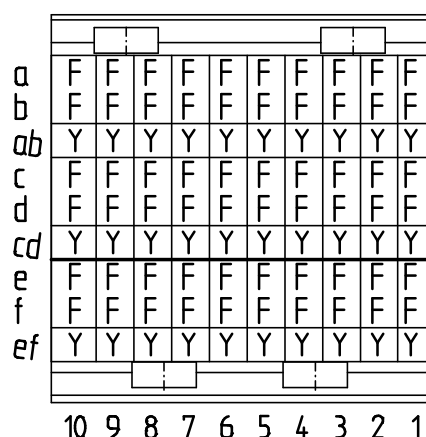


Kontaktversion, Messerkontakt  
*Contact Option, Male Contact*



Kontaktversion, Schirmmesser  
*Contact Option, Shielding Contact*

Bestückungsplan - *contact layout*



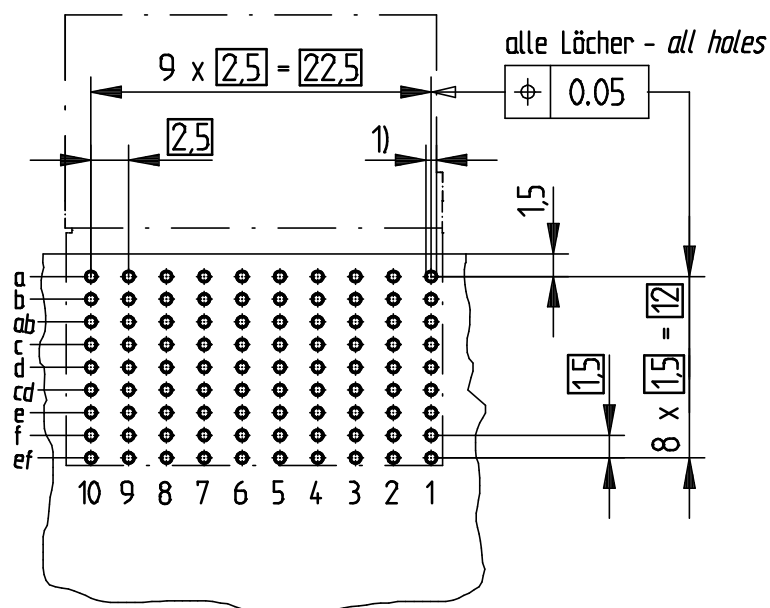
Lochbild für Leiterplatte  
(Bestückungsseite)

*Board hole pattern  
(Component mounting side)*

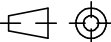

- 1)  $\varnothing 0.6 \pm 0.05$  Durchmesser des metallisierten Loches  
 $\varnothing 0.6 \pm 0.05$  *Diameter of finished plated-through hole*  
 $\varnothing 0.7 \pm 0.02$  Bohrungsdurchmesser des Loches  
 $\varnothing 0.7 \pm 0.02$  *Diameter of drilled hole*

Schichtaufbau im metallisierten Loch  
siehe Zeichnung 114406

*Metal plating of plated-through hole  
see drawing 114406*



Consider protection memo from DIN 34

Information: F + Y siehe Bestückungsplan / see contact layout Anforderungsstufe 2 / class 2				Tolerances		 All Dimensions in mm		Scale 2:1	
All rights reserved. Only for information. To insure that this is the latest version of this drawing, please contact one of the ERNI companies before using.				Subject to modification without prior notice. Drawing will not be updated.		Designation ERmetZD Messerleiste abg. 3-10 <i>ERmetZD Male Con. angle 3-10</i>			
								www.ERNI.com	
				b		30.01.2012		204781	
Index		Date		H:00058318.SZA		ERMZD			

# Mouser Electronics

Authorized Distributor

Click to View Pricing, Inventory, Delivery & Lifecycle Information:

[ERNI Electronics:](#)

[204781](#)