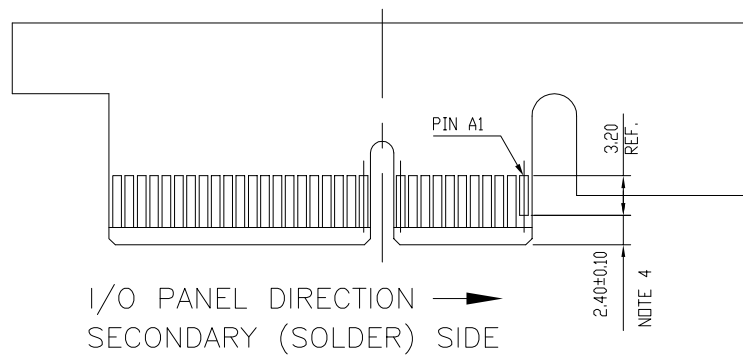
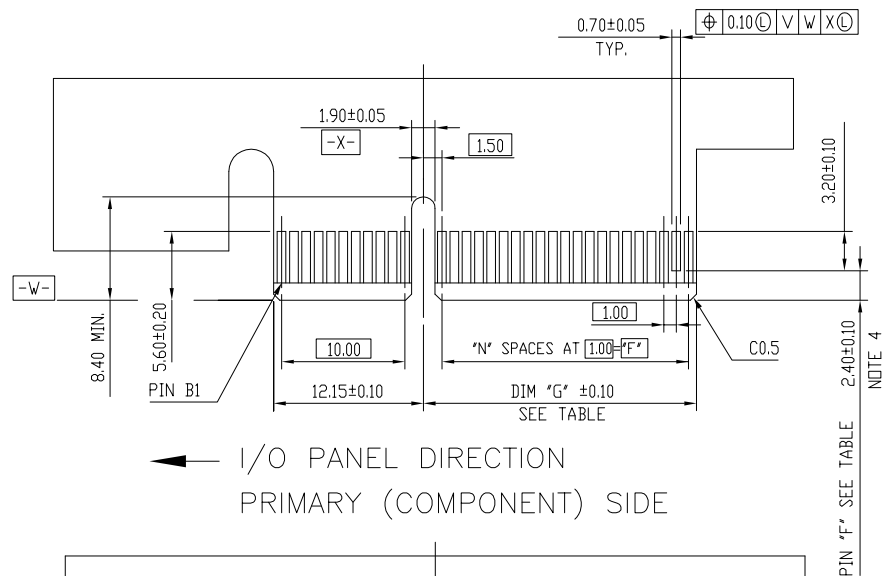


DIMENSIONS					
POSITION	A±0.20	B±0.20	C±0.20	D±0.23	E
36	7.65	27.00	9.15	25.00	6
64	21.65	41.00	23.15	39.00	20
98	38.65	58.00	40.15	56.00	37
164	71.65	91.00	73.15	89.00	70

mat'l. code	-	surface	✓	tolerance	ASME_Y14.5	projection	product family	PCI_EXPRESS
lfr	ecn no	dr	date	tolerances unless otherwise specified			title	PCI_EXPRESS_CARD_EDGE_GEN3
B	DG-27072	ZH	2017-05-23	angles	.0±0.30	MM	ASSEMBLY(SMT)	
				±2'	.00±0.20	scale N/A	dwg no	10136859
					.000±0.10		sheet 1 of 4	size
				dr	ZHENHUA_LIU	2015-12-07		A4
				engr	ZHENHUA_LIU	2015-12-07		
				chr	STONE_LI	2015-12-07		
				appd	PM_ZHENG	2015-12-07		
sheet	revision	B					type	CUSTOMER Drawing
index	sheet							



ADD-IN CARD EDGE-FINGER DIMENSIONS



#	POS	REF.	N	DIM "G"	DIM "F"	"F"
36	6			8.15	6.00	B17
64	20			22.15	20.00	B31
98	37			39.15	37.00	B48
164	70			72.15	70.00	B81

mat'l. code	-	surface	✓	tolerance	ASME_Y14.5	projection	product family	PCI_EXPRESS
lfr	ecn no	dr	date	tolerances unless otherwise specified		MM	title	PCI_EXPRESS_CARD_EDGE_GEN3 ASSEMBLY(SMT)
				angles	.0±0.30		dwg no	sheet 2 of 4 size
				±2'	.00±0.20	scale N/A	10136859	A4
				dr	ZHENHUA_LIU	2015-12-07	Amphenol FCI	type
				enfr	ZHENHUA_LIU	2015-12-07		CUSTOMER Drawing
				chr	STONE_LI	2015-12-07		
				appd	PM_ZHENG	2015-12-07		
sheet index	revision sheet	B						



DIMENSIONS				
POSITION	E	H ± 0.10	J	K ± 0.10
36	6	28.00	6.00	9.15
64	20	42.00	20.00	23.15
98	37	59.00	37.00	40.15
164	70	92.00	70.00	73.15

[illegible]

NOTES:

1.MATERIAL:

HOUSING: NYLON, GLASS FILLED UL94V-0 RATE, SUITABLE FOR I.R.SOLDERING.

TERMINAL: COPPER ALLOY

PLATING: SEE PRODUCT NUMBER CODE

METAL PADS: COPPER ALLOY

FINISH: TIN OVER NICKEL

2.PRODUCT SPECIFICATION: GS-12-390.PACKAGING SPECIFICATION: GS-14-1451

③THE HORIZONTAL AXIS FOR THE PAD PATTERN IS ESTABLISHED BY

A LINE THROUGH THE CENTER OF THE TWO Ø1.0 HOLES.

THE VERTICAL AXIS IS 90° TO THE HORIZONTAL AXIS, THROUGH THE CENTER OF DATUM -Z-

④NO TIE BAR PERMITTED FROM CARD EDGE TO LEADING EDGE OF PAD FOR PINS A1 AND PIN NUMBERS "F".

⑤CHAMFER EDGES MUST BE FREE OF CUTTING BURRS.

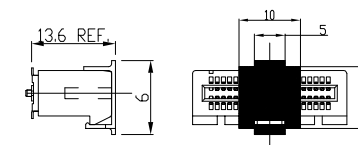
6.RoHS COMPATIBLE PRODUCT SPECIFICATIONS

a - PLATING:

- "LF" MEANS THE PRODUCT IS LEAD-FREE

b - MANUFACTURING PROCESS COMPATIBILITY

- THE HOUSING WILL WITHSTAND EXPOSURE TO 260°C±5°C PEAK TEMPERATURE FOR 5 SECONDS IN A CONVECTION, INFRA-RED OR VAPOR PHASE REFLOW OVEN.



POSITION OF CAP

PRODUCT NUMBER CODE

10136859 - X X X L F

LEAD FREE OPTION

HOUSING COLOR OPTIONS
1-BLACK

TERMINAL PLATING OPTIONS

0-50u" Ni UNDERPLATE

30u" Au CONTACT AREA

100u" TIN TAIL AREA -----COMPATIBLE RoHS

1-50u" Ni UNDERPLATE

15u" Au CONTACT AREA

100u" TIN TAIL AREA -----COMPATIBLE RoHS

2-50u" Ni UNDERPLATE

GOLD FLASH CONTACT AREA

100u" TIN TAIL AREA -----COMPATIBLE RoHS

PACKAGING OPTIONS

P-TAPE & REEL PACKAGING WITH CAP (FOR 98P OPTIONS ONLY) B

Y-HARD TRAY PACKAGING (FOR 164P OPTION ONLY)

Z-HARD TRAY PACKAGING WITH MYLAR(FOR 164P OPTION ONLY)

F-HARD TRAY PACKAGING WITH CAP (FOR 164P OPTION ONLY)




POS OPTIONS

0-36

1-64

2-98

3-164

mat'l. code -				surface - ✓		tolerance ASME_Y14.5		projection 		product family PCI_EXPRESS									
lfr	ecn	no	dr	date	tolerances unless otherwise specified					title									
					angles	unad	.0±0.30	PCI_EXPRESS_CARD_EDGE_GEN3											
							.00±0.20	ASSEMBLY(SMT)											
					±2'		.000±0.10	scale N/A											
					dr	ZHENHUA_LIU	2015-12-07		dwg no		sheet 4 of 4				size				
					enfr	ZHENHUA_LIU	2015-12-07		10136859						A4				
					chr	STONE_LI	2015-12-07												
					appd	PM_ZHENG	2015-12-07				type				CUSTOMER Drawing				
sheet index		revision sheet		B															