
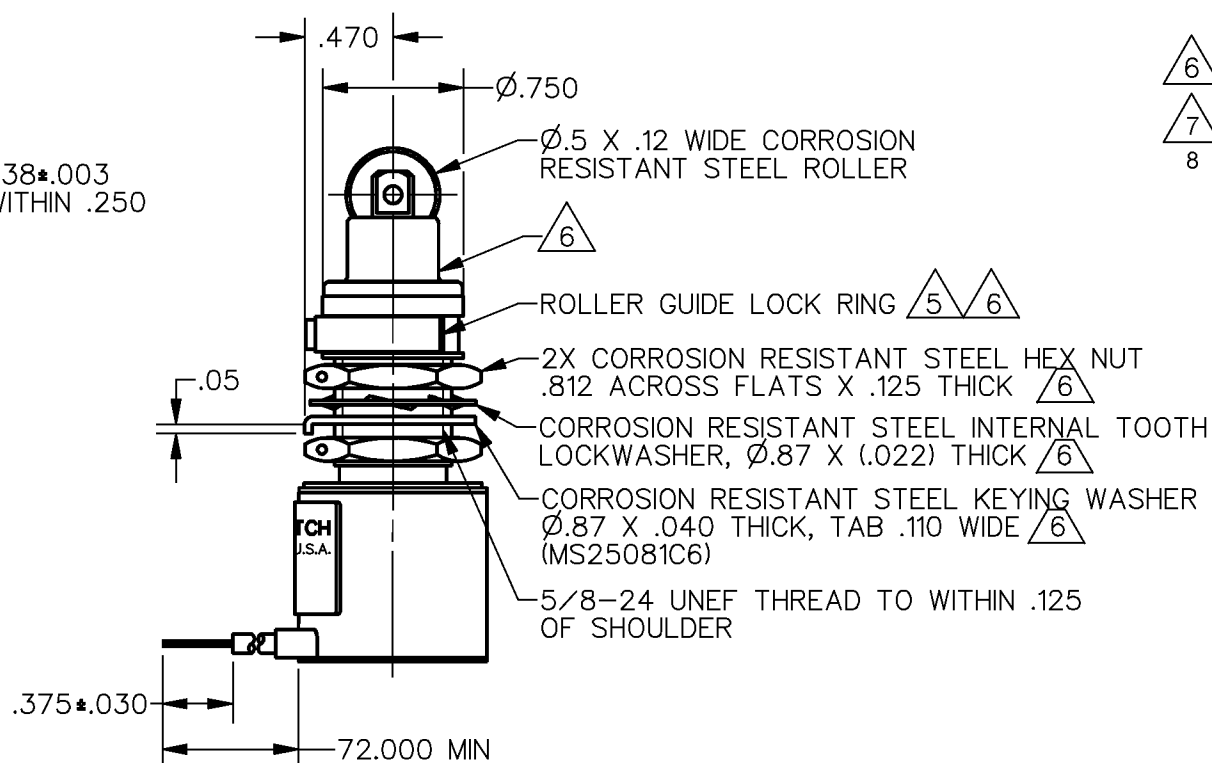
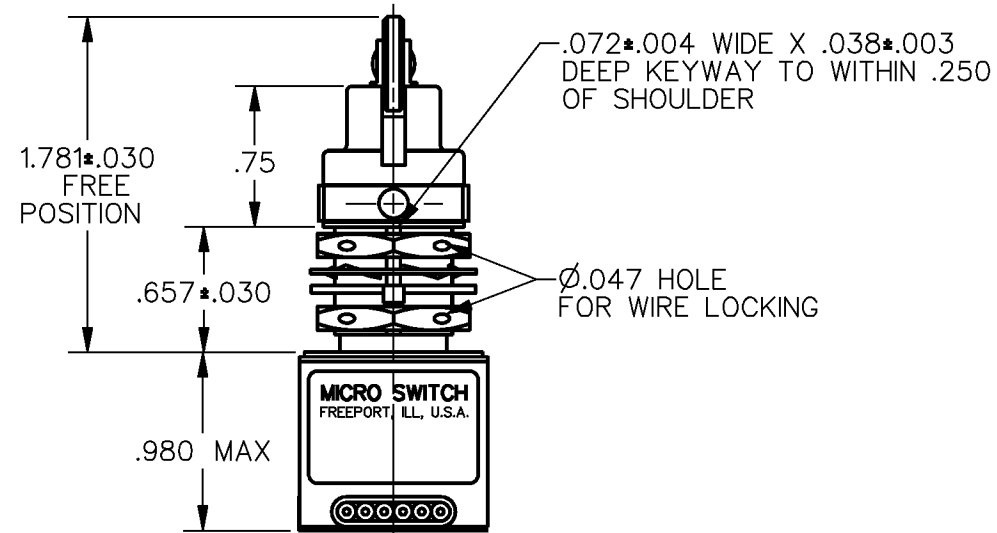
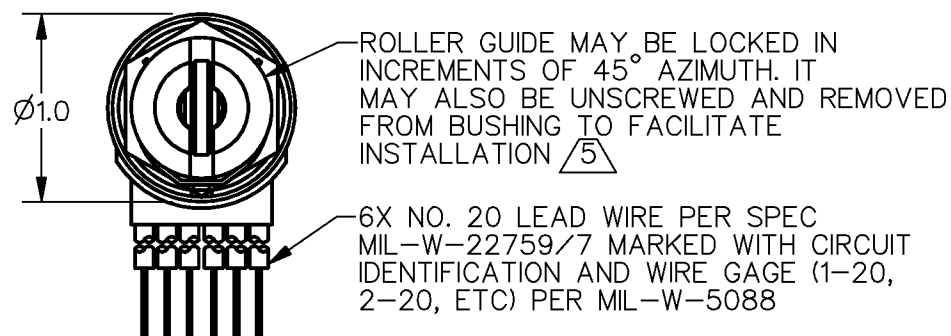
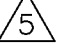




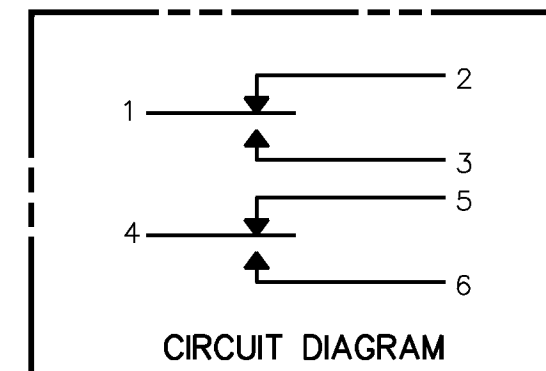
HONEYWELL PART NUMBER
21EN9-6
FAA-PMA 

REV	DOCUMENT	CHANGED BY	CHECK
22	0010575	KR 17JAN05	AK



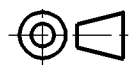
NOTES

- 1 - CORROSION RESISTANT STEEL ENCLOSURE
- 2 - SWITCH SEALED PER MIL-S-8805 SYMBOL 4
- 3 - CIRCUIT DIAGRAM, CATALOG LISTING, DATE CODE, FED MFG AND FAA-PMA ARE SHOWN ON NAMEPLATE
- 4 - COINCIDENCE OF OPERATING AND RELEASING POINTS: .010 OF PLUNGER TRAVEL
-  TO ADJUST ROLLER DIRECTION, REMOVE ROLLER GUIDE LOCK RING, SCREW ROLLER GUIDE DOWN AS FAR AS POSSIBLE, THEN UNSCREW TO DESIRED DIRECTION. SECURE BY REPLACING ROLLER GUIDE LOCK RING
-  HARDWARE MAY BE PACKAGED UNASSEMBLED PER MIL-S-8805
-  FOR MANUFACTURING DETAIL SEE ASSEMBLY DRAWING 21EN9-6 FOR FAA-PMA
- 8 - WEIGHT: 8.9 OZ MAX



CHARACTERISTICS	ELECTRICAL DATA
OPERATING FORCE — — — — 6-12 LB	CONTACT ARRANGEMENT 2X SPDT
FULL OVERTRAVEL FORCE --- 30 LB MAX	LOAD
RELEASE FORCE — — — — 4 LB MIN	
PRETRAVEL — — — — .040 MAX	SEA LEVEL
DIFFERENTIAL TRAVEL --- .020 MAX	50,000 FT.
OVERTRAVEL — — — — .250 MIN	RES
	IND
	MOTOR

LOAD	SEA LEVEL	50,000 FT.
RES	4	4
IND	2	2
MOTOR	4	

DESIGN UNITS: INCH	DRAWN	TSM	7 FEB 97
TOLERANCES UNLESS NOTED:	CHECK	-	-
NO PLACE X ± -	THIS DRAWING COVERS A PROPRIETARY ITEM AND IS THE PROPERTY OF HONEYWELL. THIS DRAWING IS NOT TO BE COPIED OR USED WITHOUT THE PERMISSION OF HONEYWELL.		
ONE PLACE .X ± 0.030			
TWO PLACE .XX ± 0.015			
THREE PLACE .XXX ± 0.005			
FOUR PLACE .XXXX ± -			
ANGLES ± -	INTERPRET PER ASME Y14.5M-1994 OTHER HONEYWELL ENGINEERING STANDARDS MAY APPLY		
THIRD ANGLE PROJECTION 	RASTER		

Honeywell			
TITLE SWITCH ENCLOSED			
SIZE	TYPE	DRAWING NAME	REV
B	I	21EN9-6	22
SCALE	1:1	SHEET 1 OF 1	