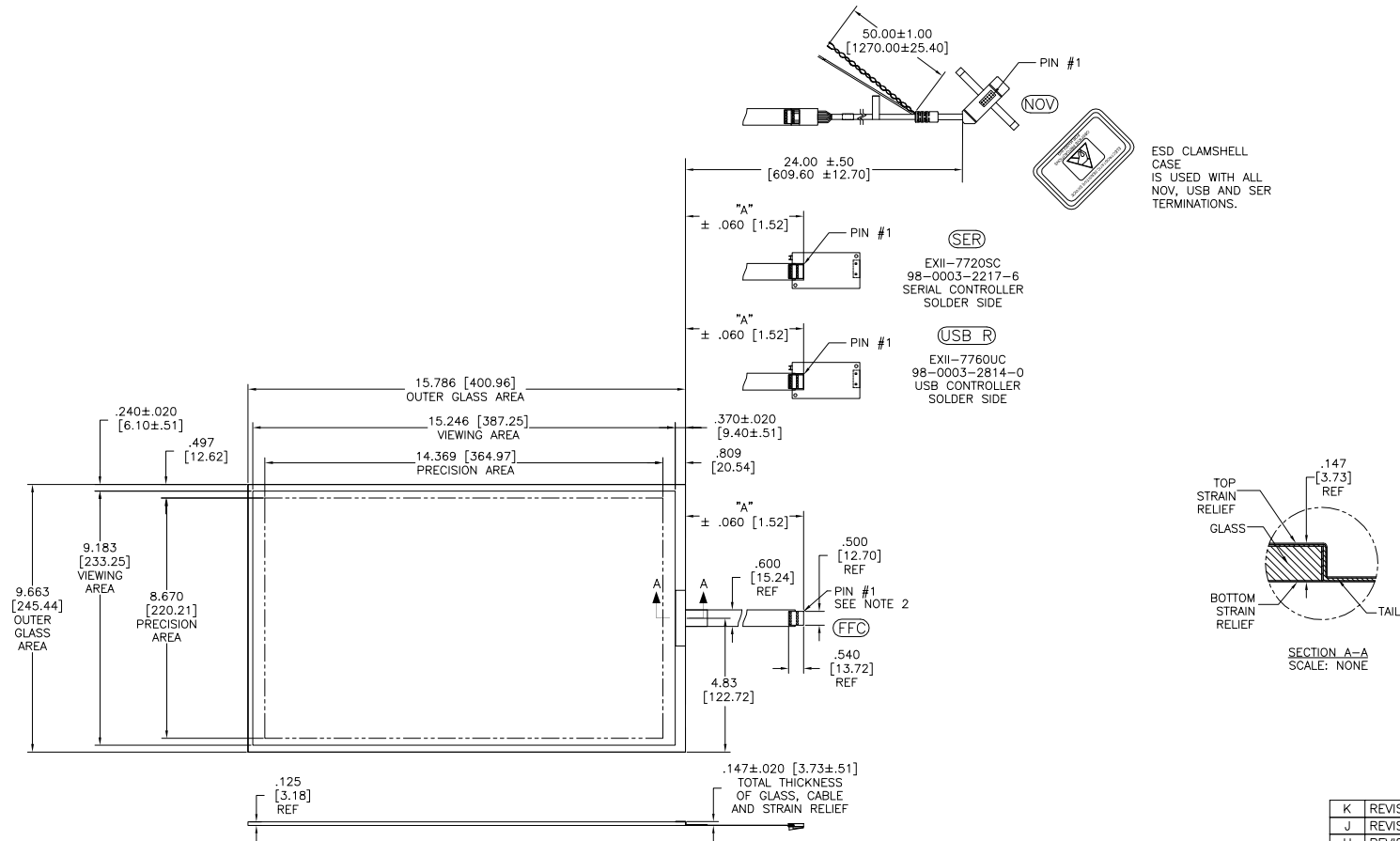


OGA DIAGONAL: 18.51 [470.12]
 VA DIAGONAL: 17.80 [452.07]
 PA DIAGONAL: 16.82 [427.20]

TOP LEVEL NUMBER	US NUMBER	TYPE	DIM "A" (TOTAL GLASS TO CONNECTOR)	A/G FINISH	PROD SPEC
17-9241-205	98-0003-3351-2	FFC	8.00" [203.20]	AG500	23655
17-9241-227	98-0003-2715-9	SER	8.00" [203.20]	AG500	23655
17-9241-206	98-0003-3045-0	NOV	SEE DWG	AG500	23655
17-9241-226	98-0003-3129-2	USB R	8.00" [203.20]	AG500	23655
N/A	98-0003-4227-3	USB R	8.00" [203.20]	AG100	34523
N/A	98-0003-4229-9	SER	8.00" [203.20]	WC100	34523
N/A	98-1100-0097-7	FFC	8.00" [203.20]	WC100	34523



NOTES:

- WEIGHT OF GLASS IN GRAMS: 781±10%
- NICOMATIC HOUSING P/N: 0L05
 NICOMATIC RECEPTACLES (PINS) MATTE TIN PLATED P/N: 14106-12
 HOUSING ORIENTED WITH LATCH DOWN

PINOUT	
1	UL
2	UR
3	SHLD
4	LR
5	LL

K	REVISED PER CO 036265	4/13	SB
J	REVISED PER CO 036100	2/13	SEB
H	REVISED PER CO 035587	10/12	SB
REV	CHANGE NOTICE	DATE	DRW

UNITS	INCHES [MM]
TOLERANCES UNLESS OTHERWISE SPECIFIED	
.X	±
.XX	±.03 [.76]
.XXX	±.015 [.38]
ANGLES	±1°
THIRD ANGLE PROJECTION	
DO NOT SCALE DRAWING	
SCALE	1 = 1



3M TOUCH SYSTEMS
 METHUEN, MA
 USA
 © COPYRIGHT 2004
 THIS DOCUMENT IS COPYRIGHTED PROPERTY OF THE
 3M COMPANY AND MAY NOT BE REPRODUCED
 WITHOUT 3M WRITTEN PERMISSION OR USED OR
 DISCLOSED FOR OTHER THAN 3M AUTHORIZED
 PURPOSES.

TITLE			
MARKETING DRAWING SCT32NN 17.80"			
CAD FORMAT	AUTOCAD	SHEET	1 OF 1
SIZE	C	DOCUMENT NO.	TSD-32734
REV			K