

LOC	DIST	REVISIONS					
		P	LTR	DESCRIPTION	DATE	DWN	APVD
			F7	REVISED PER ECR-17-014951	16OCT2017	BDA	KR

D

D

C

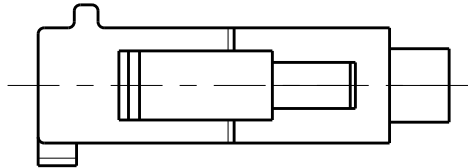
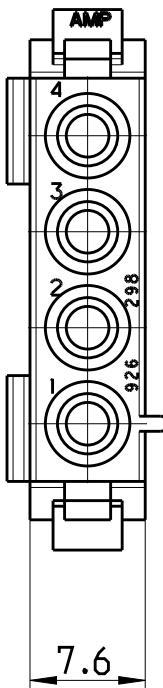
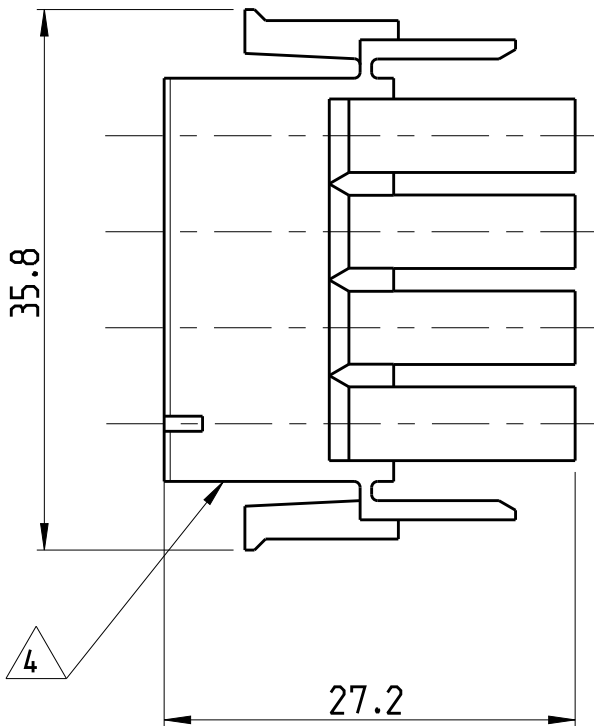
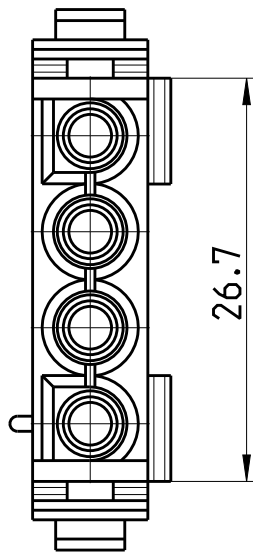
C

B

B

A

A



- 1 NEUES MATERIAL (PHOSPHOR UND HALOGEN FREI)
- 2 MATERIAL CORRESPONDING TO THE REQUIREMENT OF IEC60335-1 (INCL. GWT 750 °C WITHOUT FLAME)
- 3 COLOR OF HOUSINGS MAY RANGE FROM CLEAR TO GREEN OR YELLOW DUE TO HYGROSCOPIC NATURE OF RESIN.HOWEVER IT DOESN'T AFFECT THE FORM, FIT AND FUNCTION OF THE PRODUCT.
- 4 CSA CERTIFICATION LOGO LOCATED AT LEAST ONE SIDE OF THE HOUSING APPROXIMATELY AS SHOWN.
- 5 DIMENSIONS SHOWN REPRESENT PRODUCT IN DRY, AS MOLDED, CONDITION. ADDITIONAL 2% GROWTH DUE TO SUBSEQUENT MOISTURE ABSORPTION MAY OCCUR AND SHOULD BE ACCOUNTED FOR.

926298-7	PA66 UL94 V-0 NATURAL	2
926298-6	PA6.6 UL94 V2 NATURAL	2
926298-5	PA 6.6 UL94 V2 NATURAL	
926298-4	PA6.6 UL94 V-0 weiß	
926298-3	PA6.6 UL94 V-0 NATURAL	
926298-2	PA6.6 UL94 V-0 SCHWARZ	1
926298-1	PA66 UL94 V-2 NATURAL	3
PART NUMBER MATERIAL		

THIS DRAWING IS A CONTROLLED DOCUMENT.		DWN	10FEB2014	<div>TE Connectivity</div>			
		CHK	10FEB2014				
		APVD	10FEB2014	NAME			
		RRP		UNIVERSAL MATE-N-LOK			
		PRODUCT SPEC	108-1031	4 WAY PLUG			
		APPLICATION SPEC	114-18011				
		WEIGHT	-	SIZE	CAGE CODE	DRAWING NO	RESTRICTED TO
		CUSTOMER DRAWING		A2	-	926298	-
		SCALE	2:1	SHEET	1	OF	1
		REV	F7				