

| REVISIONS | | | | | |
|-----------|-----|---------------------------|-----------|-----|------|
| P | LTR | DESCRIPTION | DATE | DWN | APVD |
| | A | REVISED PER ECR-16-002640 | 10MAR2016 | EW | EW |
| | | | | | |
| | | | | | |
| | | | | | |

1. PARTS COMPLY TO TYCO ELECTRONICS SOLDERABILITY SPECIFICATION 109-11-2.

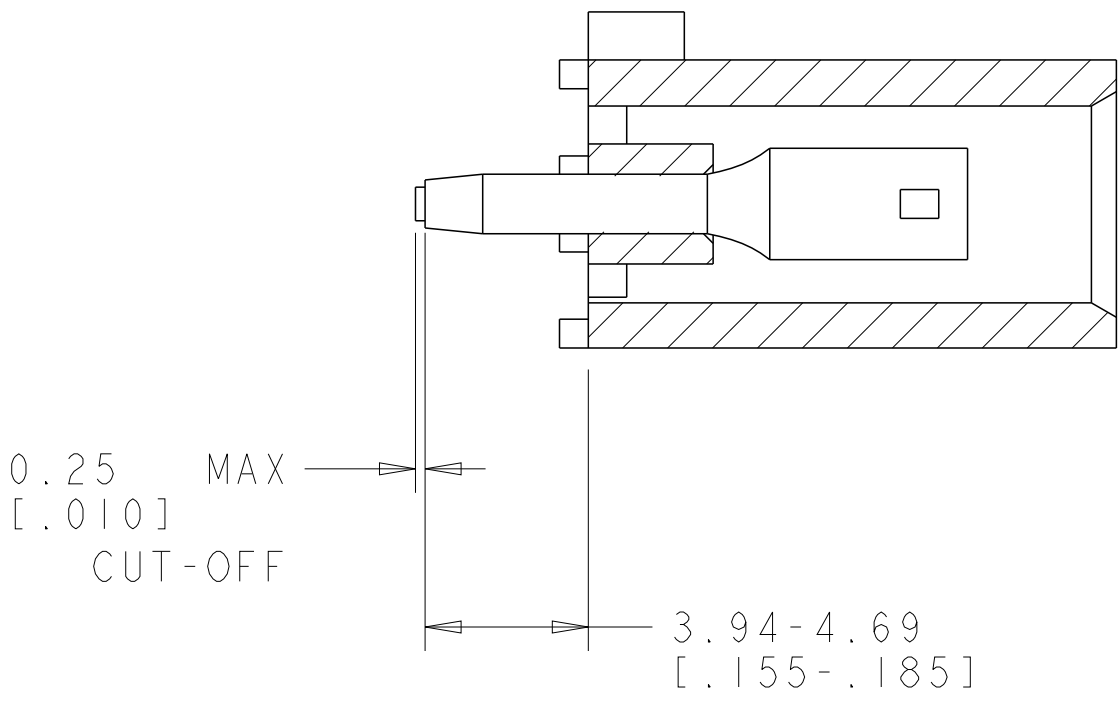
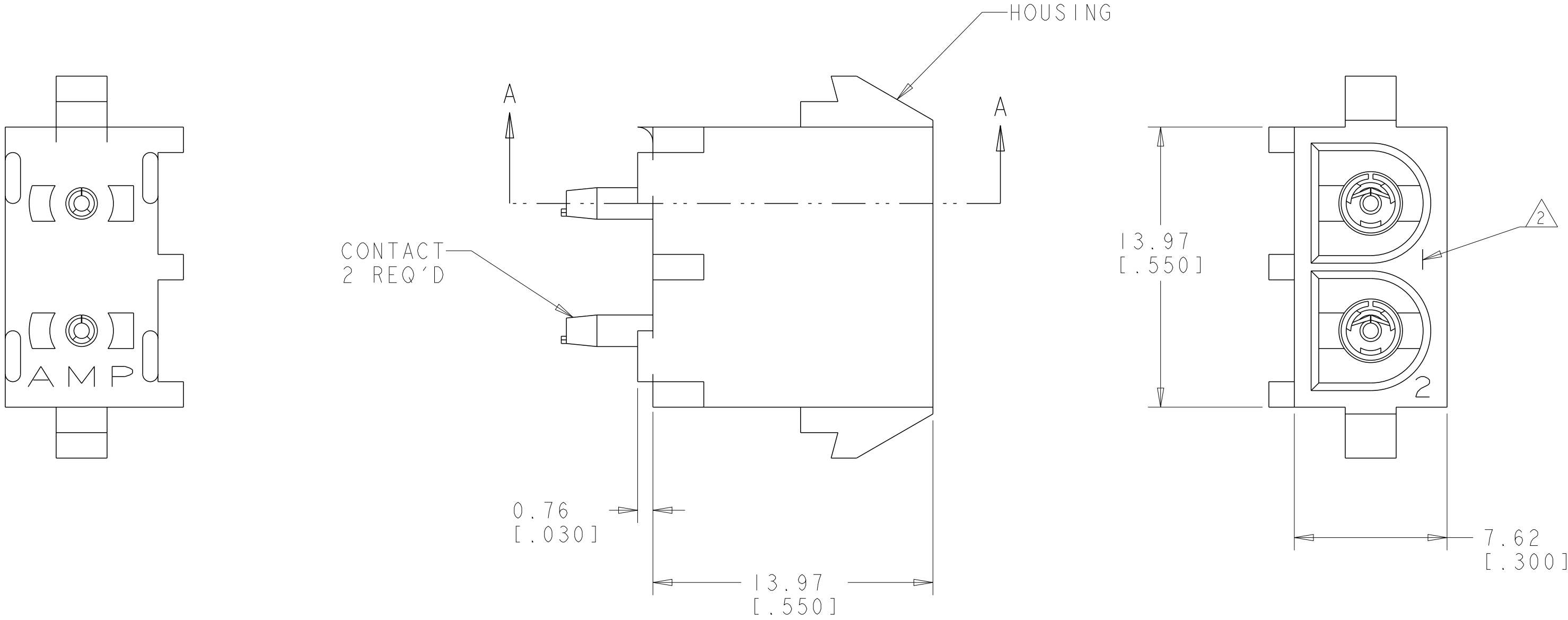
△2 CIRCUIT IDENTIFICATION CHARACTERS ARE ADJACENT TO THE INDICATED CAVITIES, BUT LOCATION AND ORIENTATION MAY DIFFER FROM PRINT.

3. DIMENSIONS IN BRACKETS ARE IN INCHES.

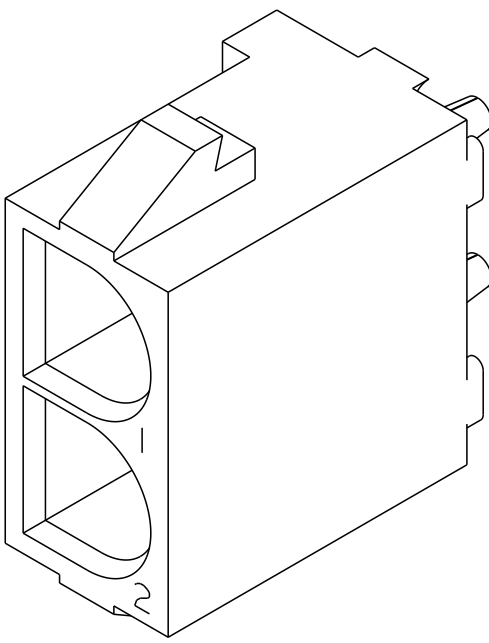
4. FLAMMABILITY UL V-0 FOR THICKNESS 0.4, 0.45, 0.8, 1.6, AND 3.0 PER IEC 60695-11-10.

5. GLOW WIRE FLAMMABILITY (GWFI): 960°C FOR THICKNESS 0.45, 0.8, 1.6, AND 3.0 PER IEC 60695-2-12.

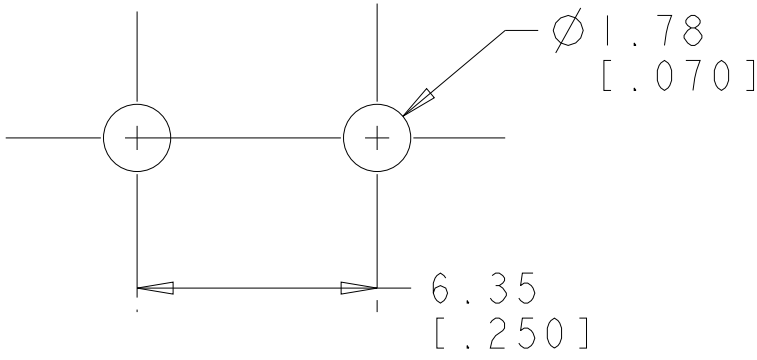
6. GLOW WIRE IGNITION (GWIT): 825°C FOR THICKNESS 0.45, 800°C FOR THICKNESS 0.8, 775°C FOR THICKNESS 1.6 AND 3.0 PER IEC 60695-2-13.





SECTION A-A



3 DIMENSIONAL VIEW
SCALE 4:1



RECOMMENDED MOUNTING HOLE PATTERN
FOR 1.57 [.062] THICK P.C. BOARD

| | | | | | | | | | | | | |
|---|--|---|-----------------------------------|--|---|-------------|--|-----------|------------|---------------|-----|---|
| PHOSPOR BRONZE, PRE-TIN | | | NYLON, UL V-0 GW, NATURAL | | | 1969795-1 | | | | | | |
| CONTACT MATERIAL AND FINISH | | | HOUSING MATERIAL AND COLOR | | | PART NUMBER | | | | | | |
| THIS DRAWING IS A CONTROLLED DOCUMENT. | | | DWN BASVESH WARAD 25DEC2015 | | <div>TE Connectivity</div> | | | | | | | |
| DIMENSIONS: mm[INCHES] | | TOLERANCES UNLESS OTHERWISE SPECIFIED: | | CHK WICKES, EVAN 25DEC2015 | | | | | | | | |
|  | | APVD WICKES, EVAN 25DEC2015 | | NAME | | | | | | | | |
| | | PRODUCT SPEC | | SOCKET HEADER ASSEMBLY, 2 CIRCUIT, W/DRAIN HOLES, UNIVERSAL MATE-N-LOK(TM) | | | | | | | | |
| MATERIAL SEE TABLE | | FINISH SEE TABLE | | APPLICATION SPEC | | SIZE | | CAGE CODE | DRAWING NO | RESTRICTED TO | | |
| - | | - | | WEIGHT | | A1 | | 00779 | C=1969795 | - | | |
| CUSTOMER DRAWING | | | | | | SCALE | | 5:1 | SHEET | 1 OF 1 | REV | A |