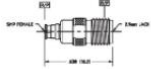


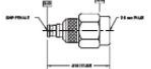
SMP - adaptors

Adaptor SMP jack - 2.9 mm jack (female/female)



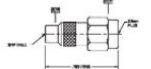
HUBER+SÜHNER type	Item no.	Packaging
29487.3	80318039	single

Adaptor SMP jack - 2.9 mm plug (female/male)



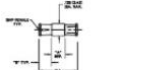
HUBER+SÜHNER type	Item no.	Packaging
29487.4	80363050	single

Adaptor SMP plug - 2.9 mm plug (male/male)



HUBER+SÜHNER type	Item no.	Packaging	Detent
29487.1	80318037	single	h/1

Adaptor/bullet jack/jack (female/female)



HUBER+SÜHNER type	Item no.	Packaging	A'	Adaptor length X	B'
31_SAMP-50-0.5/111_NE	80377837	single	0.075/1.91 mm	0.345/8.76 mm	0.135/3.43 mm
31_SAMP-50-0.6/111_NE	80377836	single	0.190/12.45 mm	0.760/19.30 mm	0.135/3.43 mm

Cable groups see page 32 Assembly tools see page 515 Mounting holes/PCB layouts see page 539

SMPM

Description

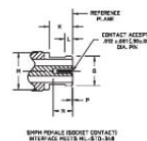
HUBER+SÜHNER Astrolab SMPM connectors offer unrivalled miniaturisation and performance for RF applications up to 65 GHz. HUBER+SÜHNER Astrolab SMPM connectors are MIL-SPEC qualified for defence and space flight applications. Along with the unique bend-to-the-end microbend style cable connectors, HUBER+SÜHNER Astrolab offers a large portfolio of different PCB mount SMPM connectors that have been designed with optimised PCB trace launch geometries to offer a complete interconnect design solution from "wire to trace".

Compatibility

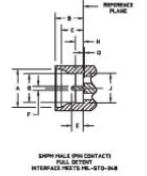
50 Ω SMPM connectors are interchangeable without restrictions.

Interface dimensions (mm/inches)

SMPM female (socket contact)



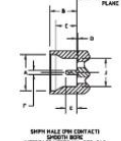
SMPM male (pin contact), full detent



Content

Description	97
Compatibility	97
Interface dimensions in mm/inches	97
Technical data	98
Hermetic threads	100
PCB mount connectors	101
Edge mount connectors	102
Adaptors	104

SMPM male (pin contact), smooth bore



	min.	max.		min.	max.
A	2.82/0.111	2.92/0.115	J	2.18/0.086	2.24/0.088
B	2.08/0.082	2.13/0.084	K	1.73/0.068	-
C	1.57/0.062	1.83/0.072	L	-	0.58/0.023
D	0.00/0.000	-	M	-	2.79/0.110
E	0.76/0.030	1.14/0.045	N	1.27/0.050	-
F	0.28/0.011	0.33/0.013	P	0.00/0.000	0.20/0.008
G	2.11/0.083	2.16/0.085	Q	-	2.41/0.095
H	0.53/0.021	0.58/0.023			

Interface dimensions conformable to the following standards:

USA: MIL-PRF-31031
SMPM interface MIL-STD-348