

MFG. ENG.	APPROVED BY:	DATE:	QA	APPROVED BY:	DATE:

PART NUMBER	USB TYPE	COUPLING TYPE
DCP-USBAB-F	USB 2.0, A TO A	QUICK CONNECT
DCP-USBAT-F	USB 2.0, A TO A	THREADED

- NOTES:
- DCP-USBAB-F SHOWN IN EXPLODED VIEW. (USB 2.0 A TO USB 2.0 A WITH QUICK CONNECT COUPLING.)
 - THE DIMENSION DOES NOT INCLUDE GASKET COMPRESSION.
 - UNLESS OTHERWISE SPECIFIED, DIMENSIONS WITH TWO DECIMAL PLACES HAVE TOLERANCES OF ± 0.02 [± 0.5 mm].

MATERIALS:

GASKET: ELASTOMER, BLACK
HEX NUT: THERMOPLASTIC, BLACK
USB PANEL HOUSING: THERMOPLASTIC, BLACK
USB A RECEPTACLE:
SHELL: COPPER ALLOY, NICKEL PLATED
CONTACTS: COPPER ALLOY, GOLD PLATED
INSULATOR: THERMOPLASTIC, WHITE

ELECTRICAL:

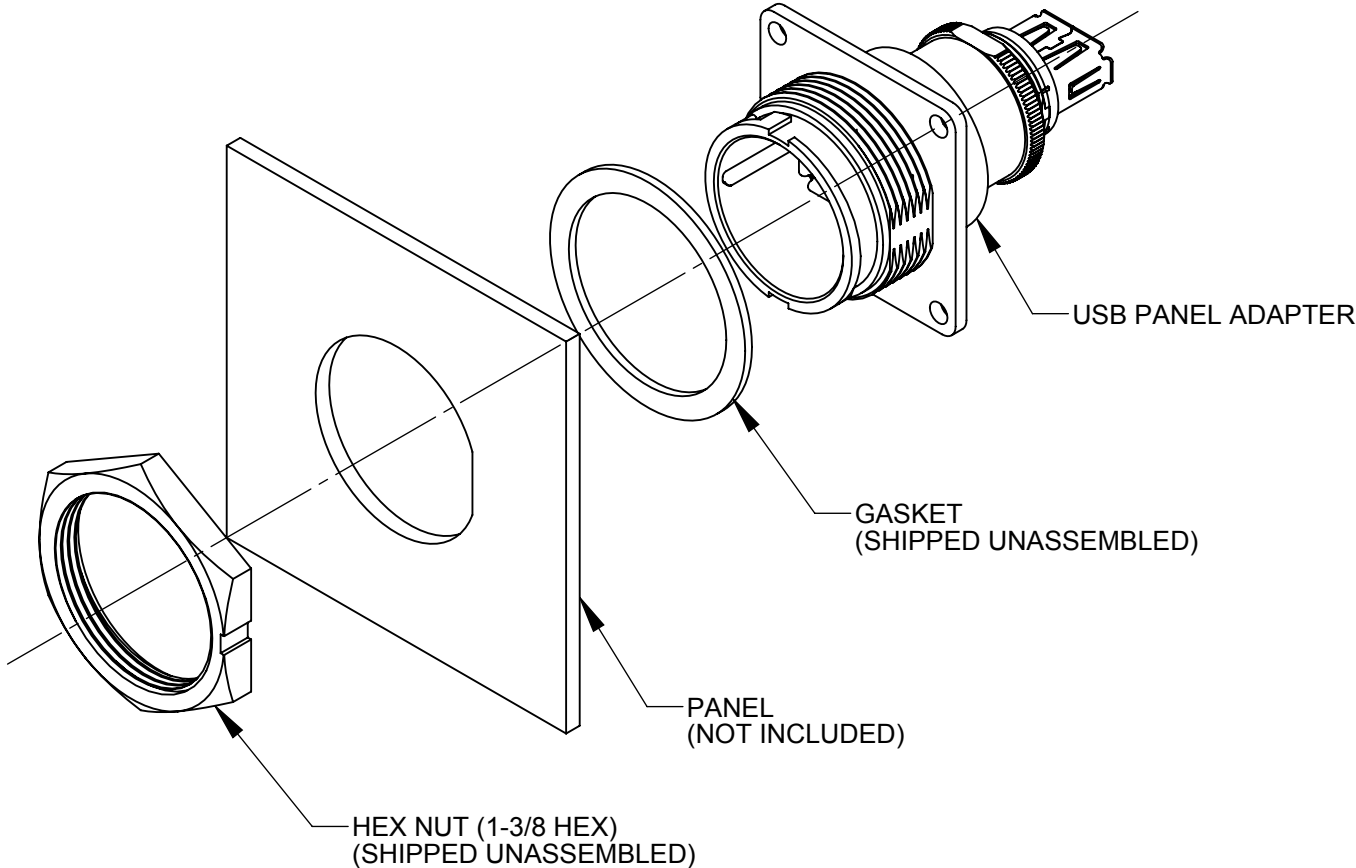
CURRENT RATING: 1.5 A MINIMUM
CONTACT RESISTANCE: 30 MILLIOHMS MAXIMUM
INSULATION RESISTANCE: 1000 MEGAOHMS MINIMUM
DIELECTRIC WITHSTANDING VOLTAGE: 200V DC

PRODUCT RATING:

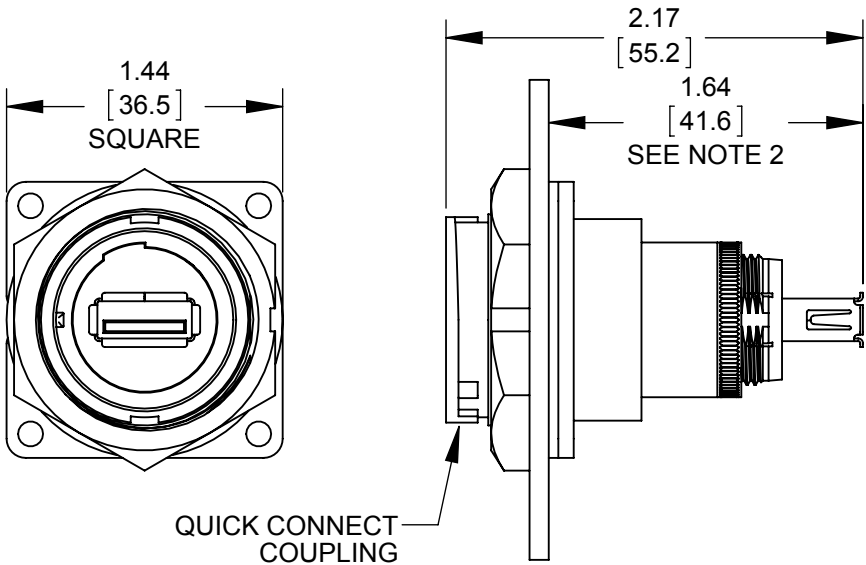
IP-67 & IP-68, NEMA 250 (6P), WHEN MATED

OTHER:

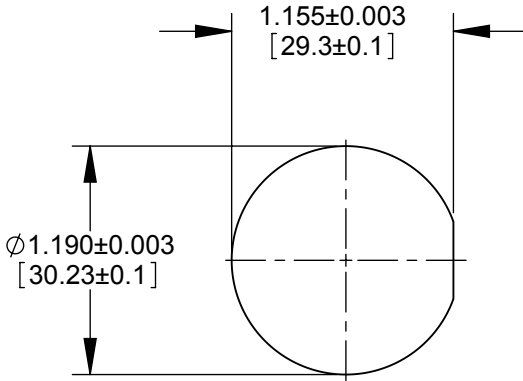
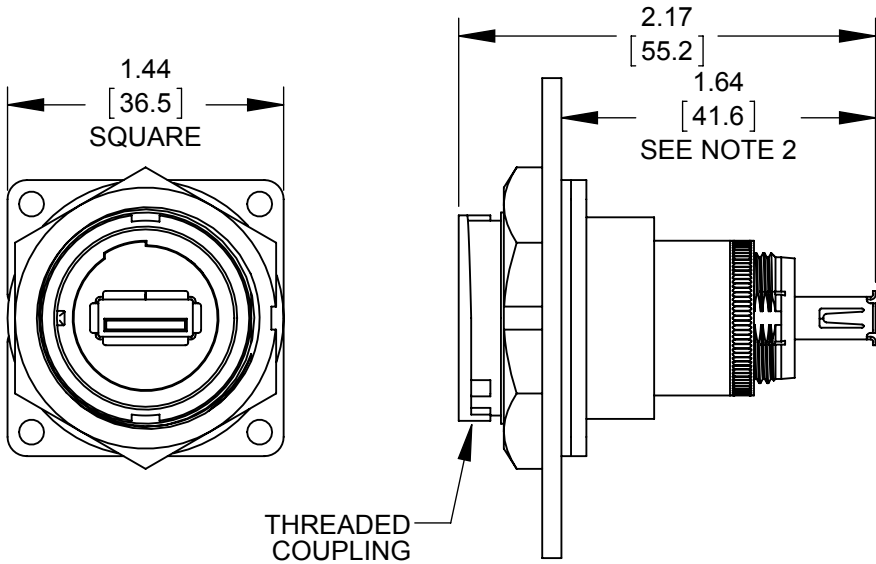
OPERATING TEMPERATURE: -25°C TO +85°C [-13°F TO +185°F]
RECOMMENDED PANEL THICKNESS:
QUICK CONNECT COUPLING: 1/32" TO 3/16" (0.8mm to 4.8mm)
THREADED COUPLING: 1/32" TO 5/32" (0.8mm to 3.9mm)



DCP-USBAB-F SHOWN
(USB A TO A ADAPTER WITH QUICK CONNECT COUPLING)



DCP-USBAT-F SHOWN
(USB A TO A ADAPTER WITH THREADED COUPLING)



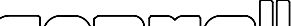
RECOMMENDED PANEL CUT-OUT
QUICK CONNECT COUPLING
OR THREADED COUPLING

DIMENSIONS IN BRACKET [] ARE METRIC.

RoHS COMPLIANT

PRELIMINARY

CUSTOMER DRAWING

0A		JGK	9/26/14		DRAWING CREATED PER PROJECT #14008.					
REV.		INIT.		DATE		DESCRIPTION				
ALL INFORMATION ILLUSTRATED IS THE PROPERTY OF "CONXALL CORPORATION." UNAUTHORIZED DUPLICATION OR DISTRIBUTION OF THIS DOCUMENT IS PROHIBITED.					ORIG. DRAWN BY:		DATE:		 601 E. WILDWOOD VILLA PARK, IL 60181	
					JGK		9/26/14			
ALL UNITS ARE IN FEET, INCHES, FRACTION OF INCHES AND DECIMALS. UNLESS OTHERWISE SPECIFIED TOLERANCES: 3 PLACE DECIMALS ±.005 ANGLES ±1° FRACTIONS ±1/16					CHECKED BY:					
△ = CRITICAL CHARACTERISTIC FLAG PER SPEC. XXXX					APPROVED BY:		TITLE: USB A PANEL CONNECTOR USB 2.0 A TO USB 2.0 A DATA-CON-X			
							CUSTOMER: STANDARD PRODUCT			
SCALE		SIZE		SHEET		PART NUMBER: DCP-USBA SERIES				
NTS		B		1 OF 1						
FILE:		SAME AS P/N		DIRECTORY:		REV 0A				
				SLW						