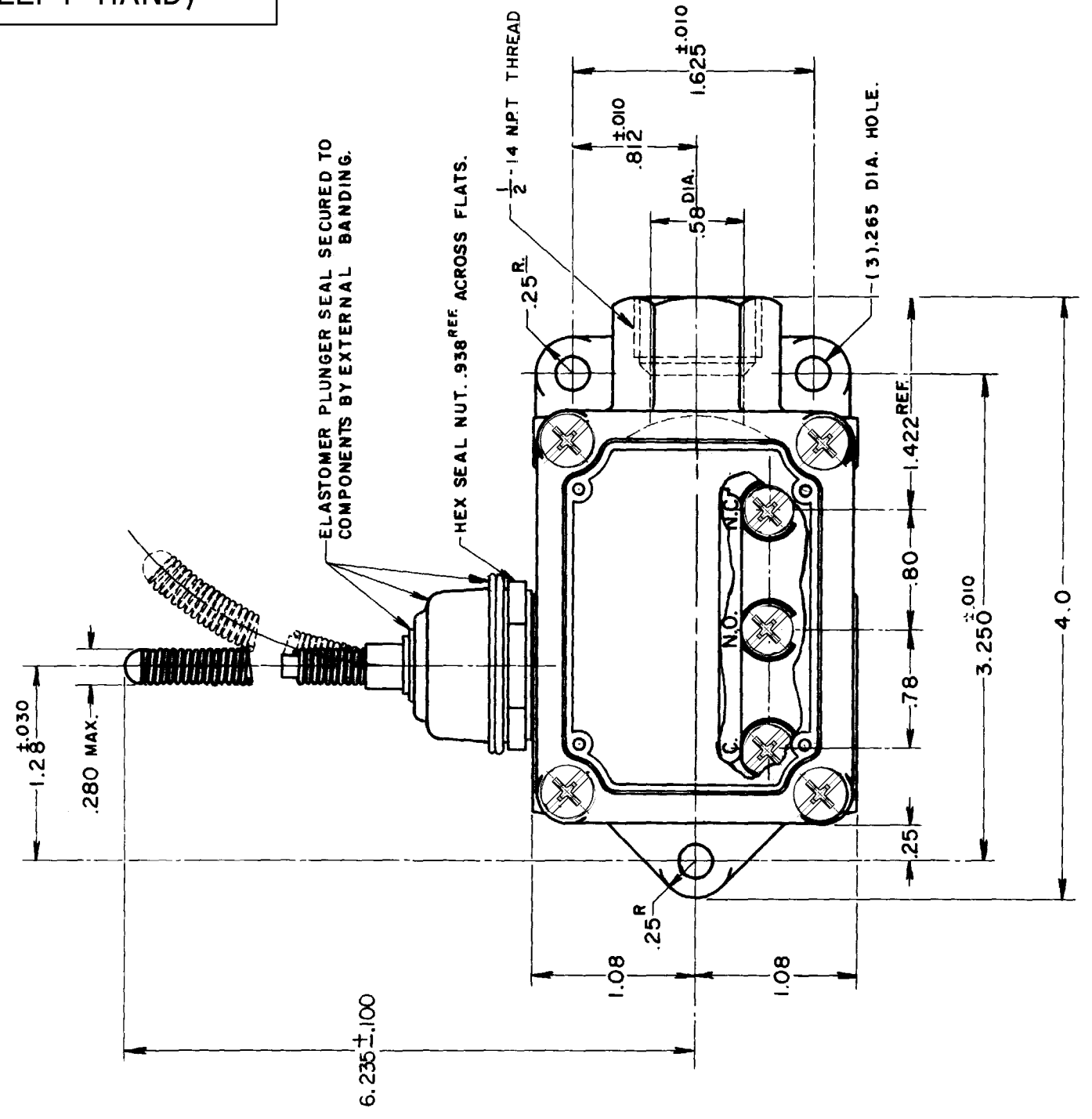
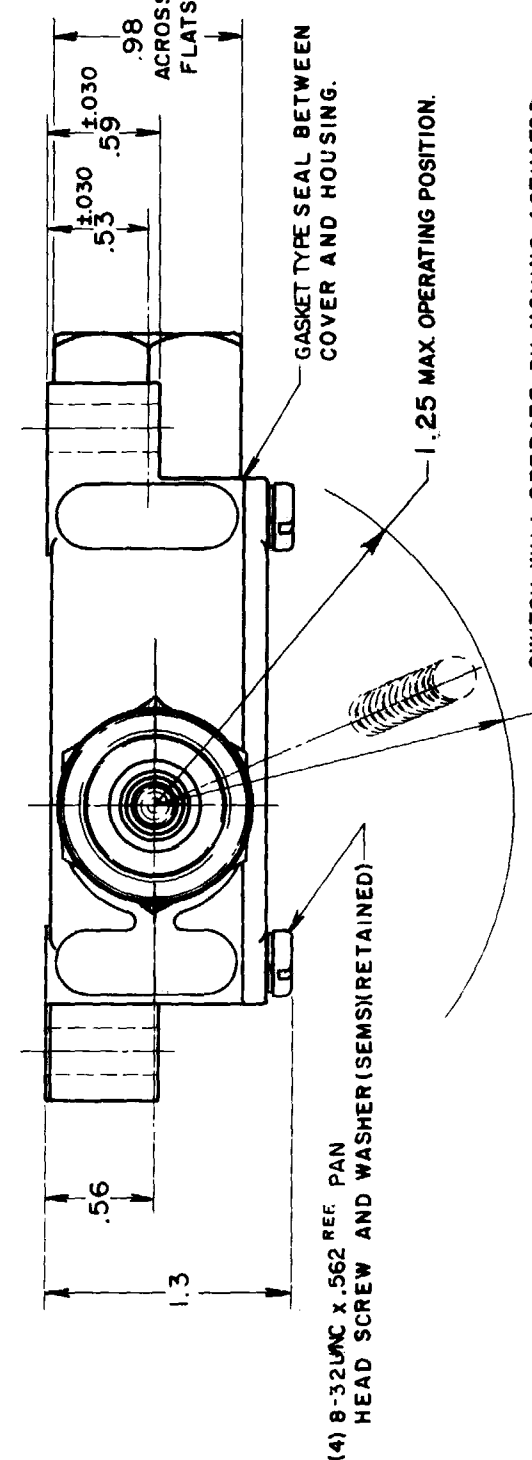


**MICRO SWITCH**  
a Honeywell Division  
FED. MFG. CODE 91929

SWITCH-ENCLOSED

CATALOG LISTING  
**BAFI-2RN18-LH**  
(LEFT HAND)



NOTE  
 1 - 8-32 UNC X (.219) BINDER HEAD, COMBINATION, TERMINAL SCREWS AND CUPWASHERS

THIS DRAWING COVERS A PROPRIETARY ITEM AND IS THE PROPERTY OF MICRO SWITCH, A DIVISION OF HONEYWELL. THIS DRAWING IS NOT TO BE COPIED OR USED WITHOUT THE APPROVAL OF MICRO SWITCH

CHARACTERISTICS	ELECTRICAL DATA	
	CONTACT ARRANGEMENT	BREAK DISTANCE
OPERATING POSITION ----- 15° MAX.	S. P. D. T.	.020 MIN
BASIC SWITCH REPLACEMENT --- BA-2R708-P7	L23	20A 125, 250 OR 480 VAC 10A 125 VAC "L" 1HP 125 VAC, 2HP 250 VAC 1/2A 125 VDC, 1/4A 250 VDC

THIRD ANGLE PROJECTION

SCALE FULL

DO NOT SCALE PRINT

UNLESS OTHERWISE SPECIFIED TOLERANCES ARE

ONE PLACE	(.01)	±.030
TWO PLACE	(.00)	±.015
THREE PLACE	(.000)	±.005
ANGLES		±
WEIGHT		