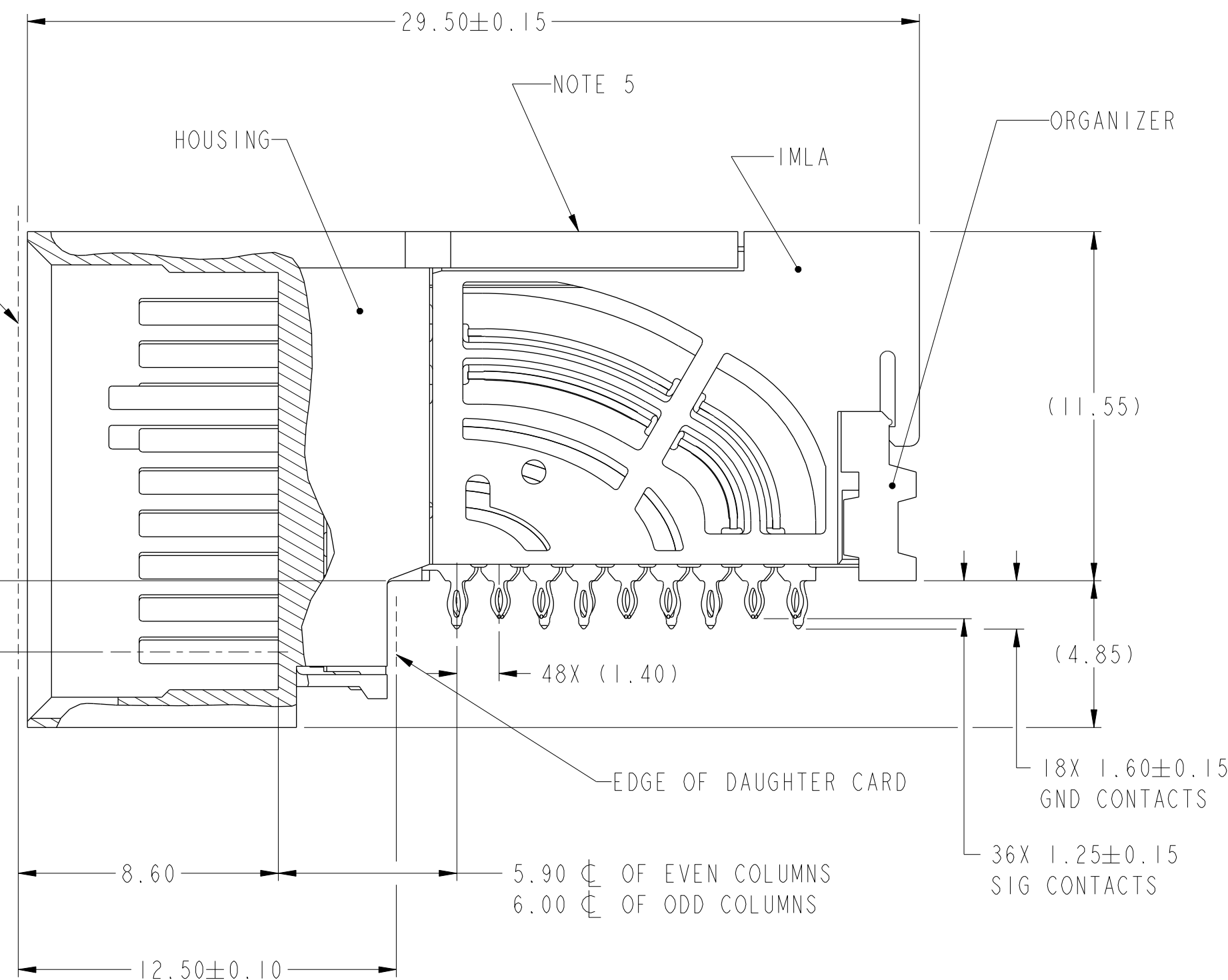
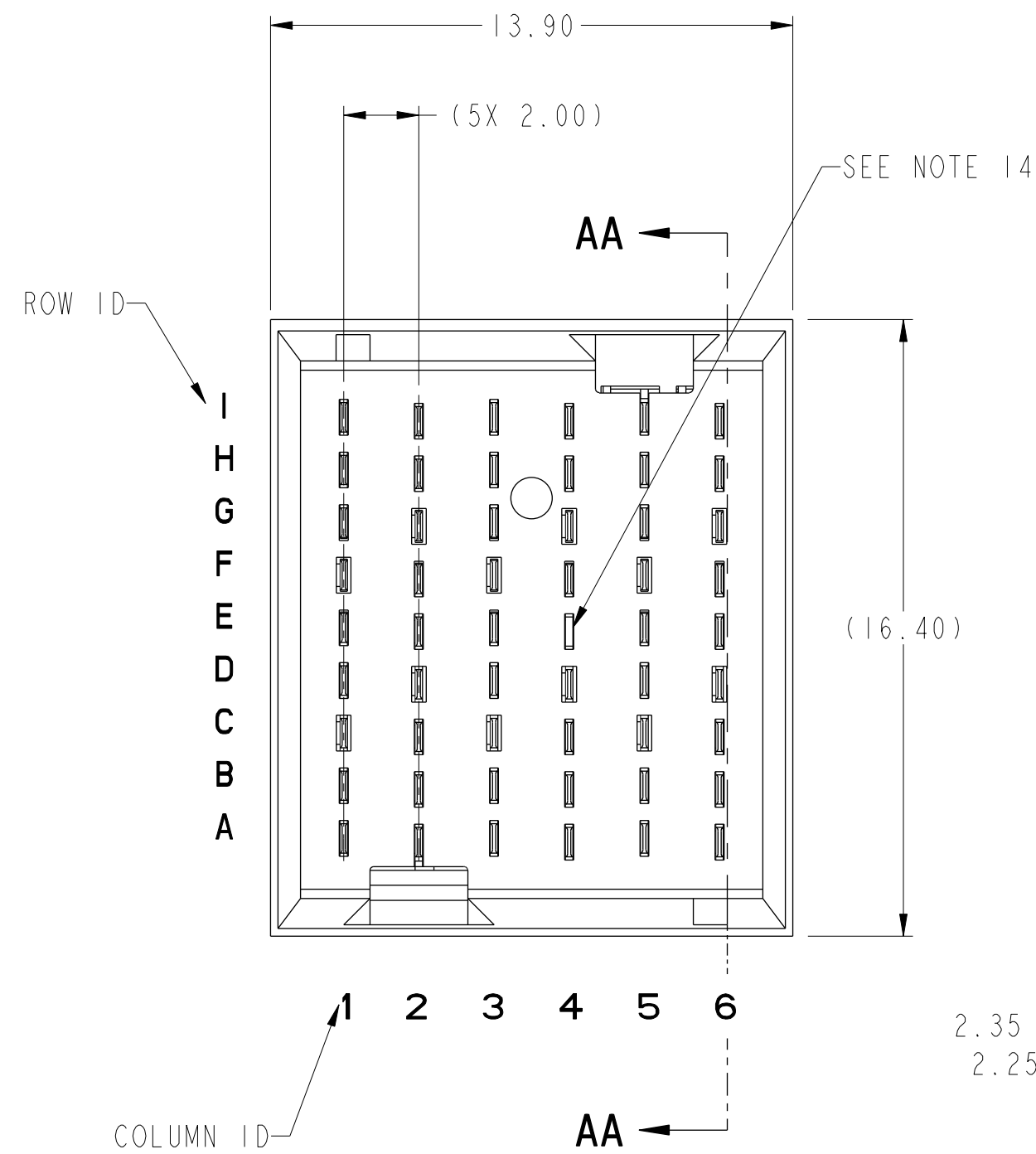


PRODUCT NUMBER
SEE SHEET 3



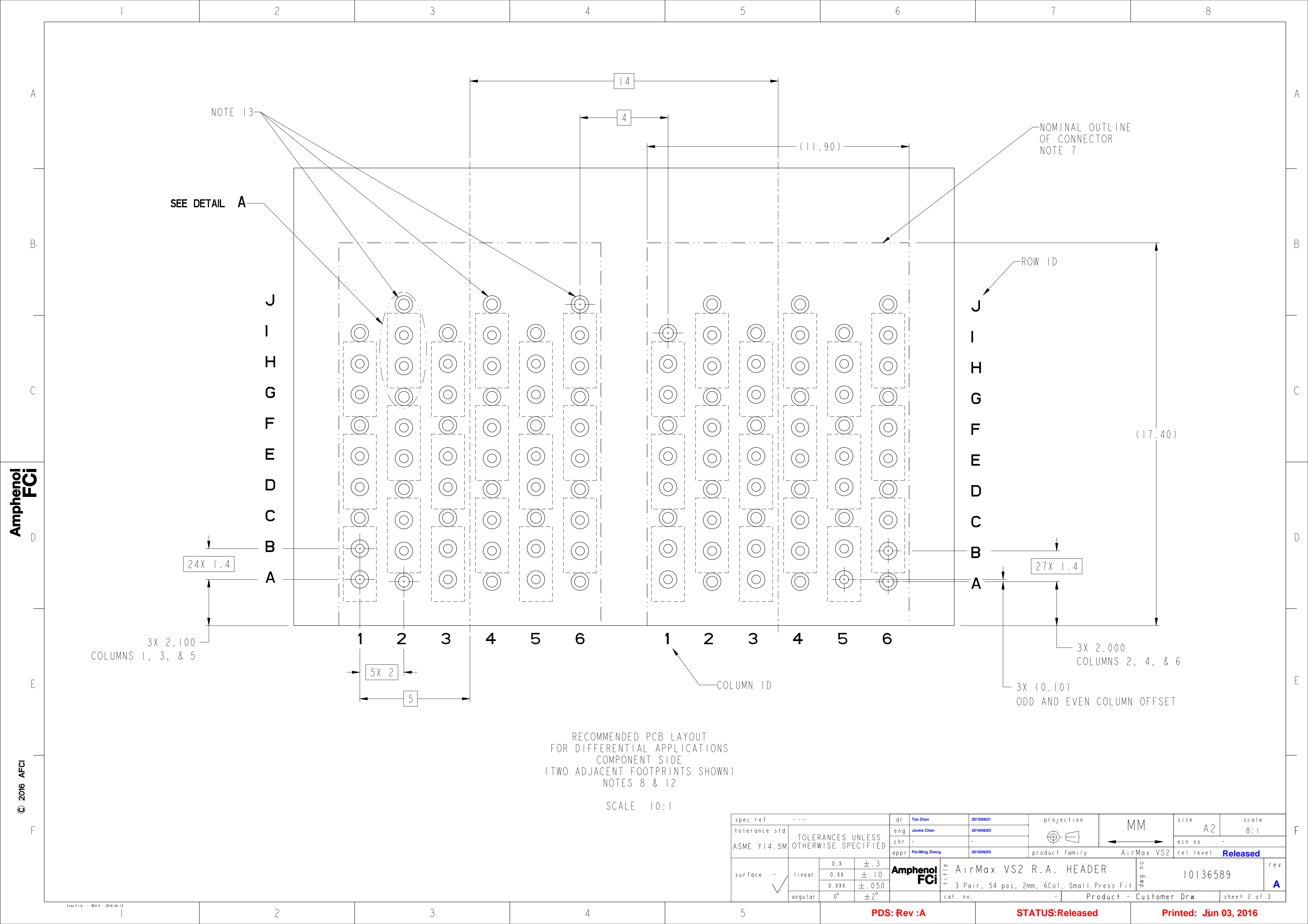
SECTION AA-AA

spec ref	---	dr	Tao Zhan	2015/09/21	projection	MM	size	A2	scale	6:1
tolerance std	ASME Y14.5M	eng	Jackie Chen	2016/06/03	chr	-	ecn no	-		
	TOLERANCES UNLESS OTHERWISE SPECIFIED	appr	Pei-Ming Zheng	2016/06/03	product family	AirMax VS2	rel level	Released		
surface	-	Amphenol FCI	title	AirMax VS2 R.A. HEADER			dwg no	10136589		rev
	linear	0.X	±.3	3 Pair, 54 pos, 2mm, 6Col, Small Press Fit						A
		0.XX	±.10							
		0.XXX	±.050							
	angular	0°	±2°							
				cat. no.	-	Product - Customer Drw			sheet 1 of 3	

PDS: Rev :A

STATUS:Released

Printed: Jun 03, 2016



Amphenol
FCi

© 2016 APCI

RECOMMENDED PCB LAYOUT
FOR DIFFERENTIAL APPLICATIONS
COMPONENT SIDE
(TWO ADJACENT FOOTPRINTS SHOWN)
NOTES 8 & 12

SCALE 10:1

spec ref		---		dr		Tao Zhan		2015/09/21		projection		<div>MM</div>		size		A2		scale		8:1	
tolerance std		ASME Y14.5M		TOLERANCES UNLESS OTHERWISE SPECIFIED		eng		Jackie Chen		2016/06/03		<div></div>		ecr no		-		rel level		Released	
						chr		-				product family		AirMax VS2							
						appr		Pei-Ming Zheng		2016/06/03											
surface		-		linear		0.X		±.3		Amphenol FCI		title		AirMax VS2 R.A. HEADER		dwg no		10136589		rev	
						0.XX		±.10						3 Pair, 54 pos, 2mm, 6Col, Small Press Fit						A	
						0.XXX		±.050													
				angular		0°		±2°				cat. no.		-		Product - Customer Drw				sheet 2 of 3	

</