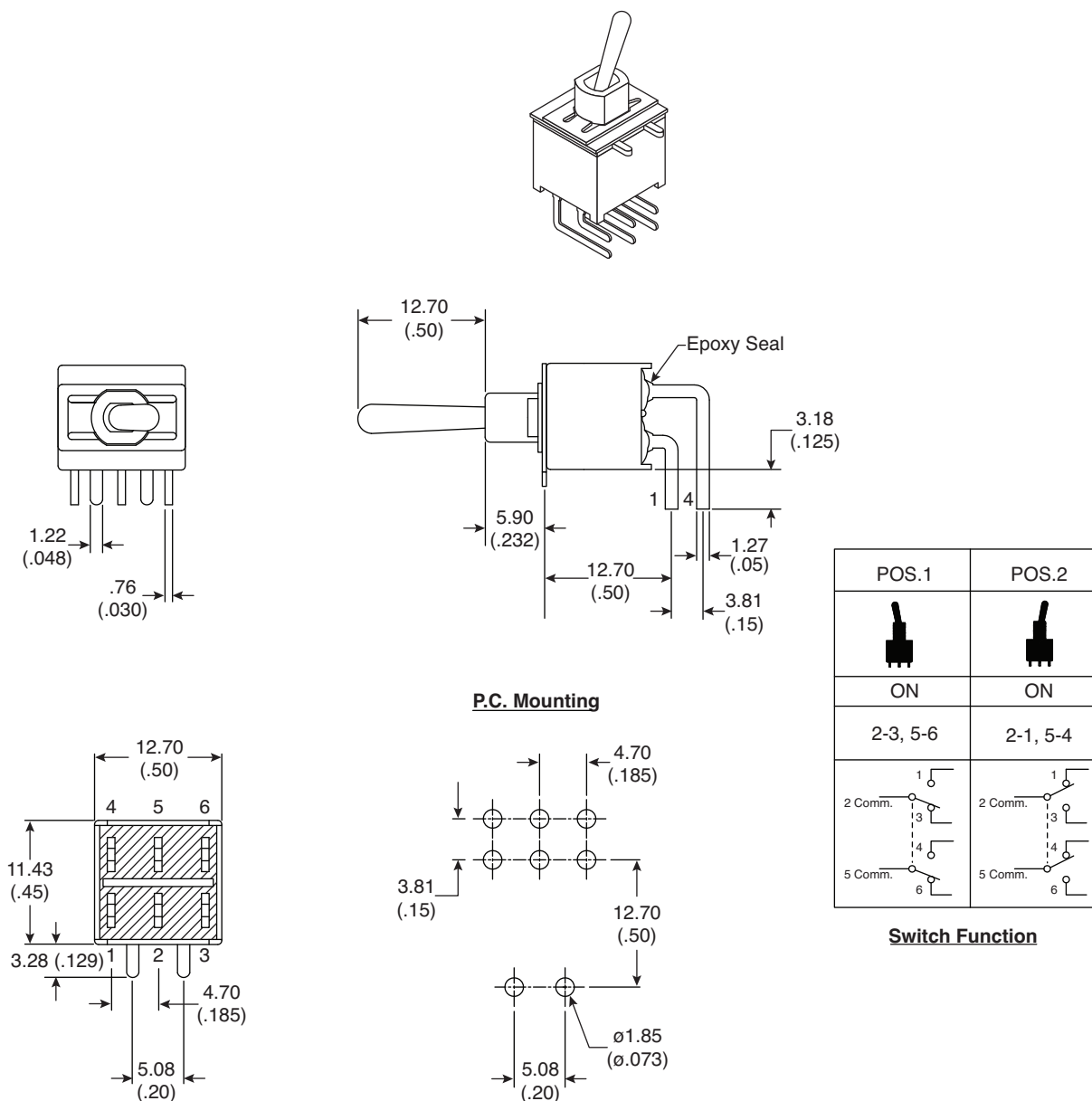


Dimensions: mm (in.)

**Electrical Specifications:**

- Contact resistance: 10m Ω max. initial @ 2-4VDC 100mA
- Insulation resistance: 1,000M Ω min.
- Dielectric strength: 1,000 V RMS@sea level
- Rating: 2A / 250VAC; 5A / 120VAC or 28VDC

Mechanical Specifications:

- Mechanical life: 30,000 make-and-break cycles
- Operating temperature: -30°C to 85°C

Note:

- RoHS Compliant by Exemption

Soldering Process:

- Manual Soldering: Use a soldering iron of 30 watts, controlled at 350°C approximately 5 sec. while applying Solder.
- Wave Soldering: Recommended soldering temperature: 260 \pm 5°C
Duration of solder immersion: 5 \pm 1 sec.
(PCB is 1.6mm in thickness)

Sealed Miniature Toggle Switch
108-1AD3T1699-EVX

Mountain
Switch