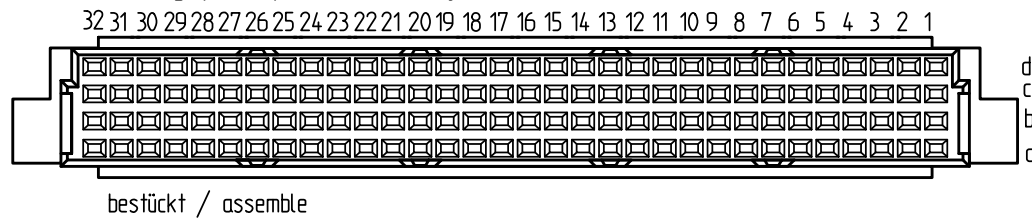
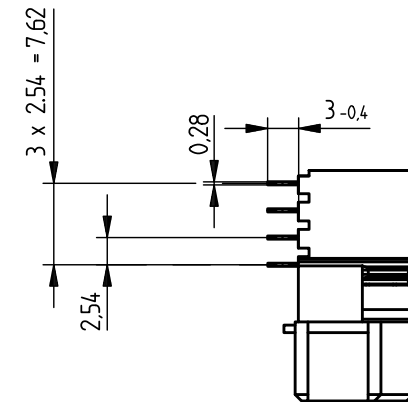
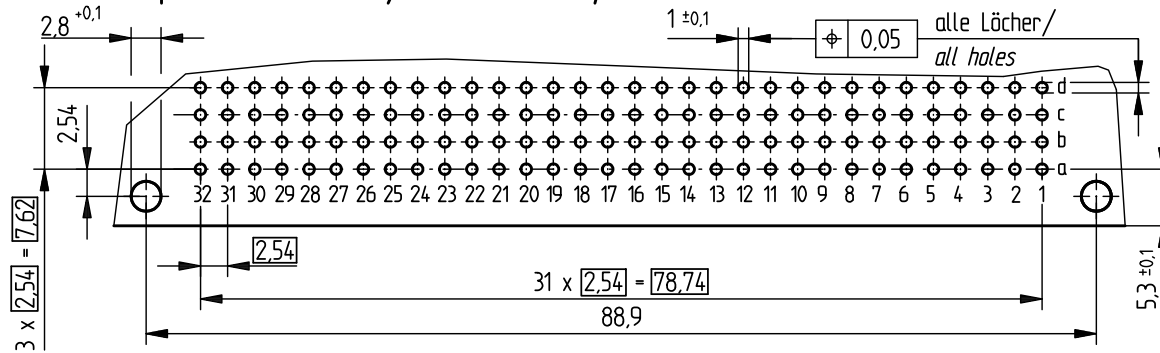


### Bestückungsplan / contact layout



### Leiterplatten-Lochbild / PCB drillhole pattern



Tauchlötanschluss 0,3x 0,7mm / solder terminal 0,3x 0,7mm

Isolierwerkstoff / housing material : PBT GF30

Bauart 7 / type 7

Anforderungsstufe 1 = 500 Steckzyklen / performance class 1 = 500 mating cycles

Fehlende Masse und Angaben gemäß IEC 60 603-2 / DIN EN 60 603-2

Missing information and dimensions according to IEC 60 603-2 / DIN EN 60 603-2

Bedruckung siehe Zeichnung 294875

Marking see drawing 294875

Information:	Tolerances		Scale	1:1
	All rights reserved. Only for information. To insure that this is the latest version of this drawing, please contact one of the ERNI companies before using.	Subject to modification without prior notice. Drawing will not be updated.	Designation	Federleiste RD 128 Löt Fem Con. RD 128 solder
Consider protection memo from DIN 34	ERNI	www.ERNI.com	374391	1
a	15.04.2010	Date	H:00069586.SZA	STVRD

# Mouser Electronics

Authorized Distributor

Click to View Pricing, Inventory, Delivery & Lifecycle Information:

[ERNI Electronics:](#)

[374391](#)