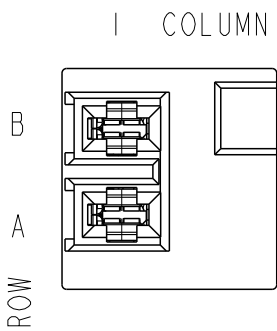


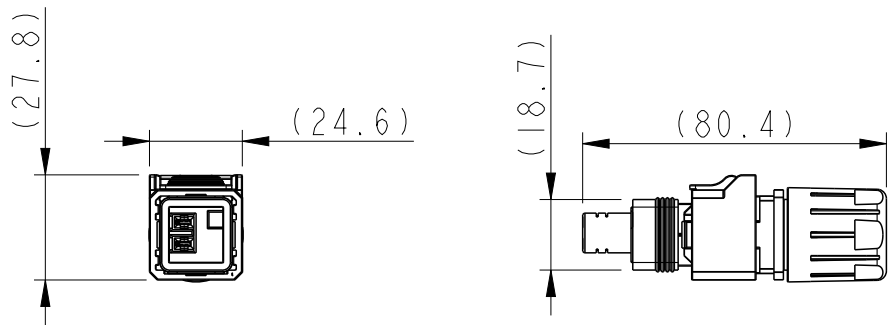
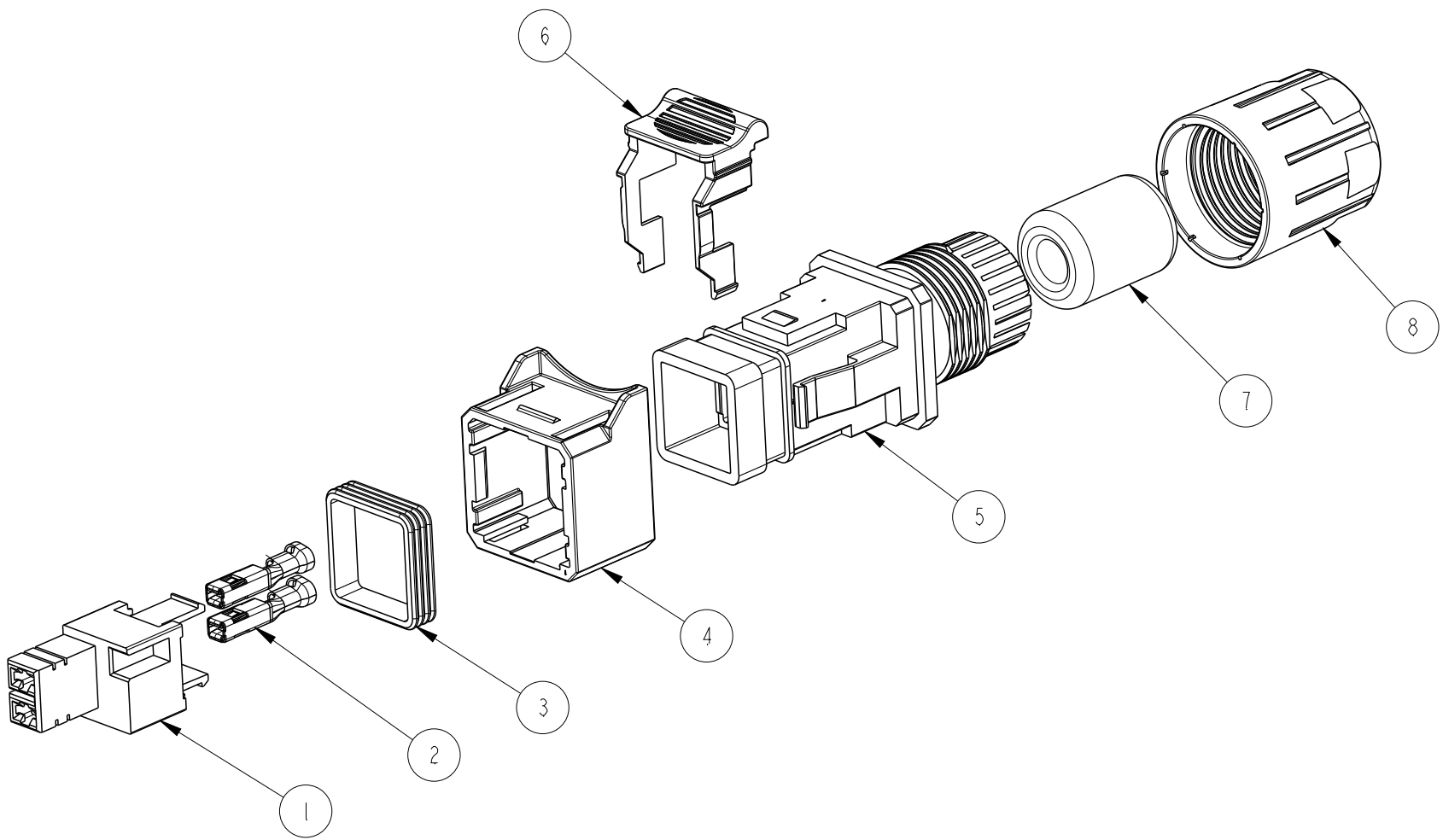
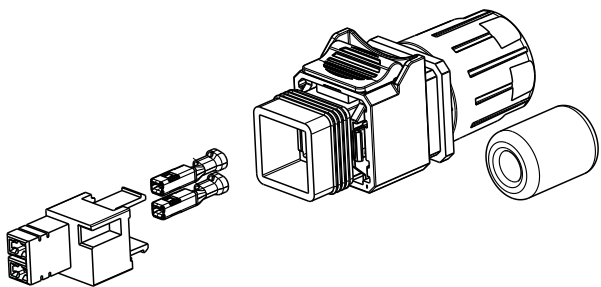
PART NUMBER  
10143487-101LF

VERIO PLUG KIT, 2 POS POWER, CRIMP TYPE  
TERMINALS, PITCH 26 MM

CONNECTOR FRONT VIEW



PACKING CONFIGURATION



SL NO	DESCRIPTION	MATERIAL	QTY	REMARKS
1	CONNECTOR HOUSING	PBT	1	
2	POWER CONTACTS	COPPER ALLOY	2	
3	SEAL	SILICONE	1	
4	SLIDE	PBT GF	1	
5	HOLDER	PBT GF	1	
6	SECONDARY LOCK	PBT GF	1	
7	GLAND	SILICONE	1	
8	NUT	PBT GF	1	

NOTES:

- 1.ALL PARTS WILL BE SUPPLIED IN BULK PACKING
- 2.PRODUCT SPEC - GS-12-1428
- 3.APPLICATION SPEC - GS-14-XXXX

spec ref				dr		Jibin John	2017/09/26		projection		mm		size		A3	scale		3:10						
tolerance std		TOLERANCES UNLESS OTHERWISE SPECIFIED				eng		B T Varghese	2017/10/14						ecn no				-					
ISO 406						chr		-	-															
ISO 1101						appr		Varma Sudhir	2017/10/14						product family		-	rel level		Released				
surface		linear		0.X		±0.3		Amphenol FCi		title		2 POS. POWER PLUG KIT		dwg no		10143487		rev		A				
																					0.XX		±0.13	
																					0.XXX		±0.05	
ISO 1302		angular		0°		±2°				cat. no.		-	Product - Customer Drw				sheet 1 of 1							