

14 W 15 V 5 V SMPS demo board with ICE5AR4770AG

DEMO_5AR4770AG_14W1

About this document

Scope and purpose

This document is an engineering report that describes a universal-input 14 W 15 V 5 V off-line non-isolated Flyback converter using the latest fifth-generation Infineon Fixed Frequency (FF) CoolSET™ ICE5AR4770AG, which offers high-efficiency, low-standby power with selectable entry and exit standby power options, wide V_{CC} operating range with fast start-up, robust line protection with input Over Voltage Protection (OVP) and various protection modes for a highly reliable system. This demo board is designed for users who wish to evaluate ICE5AR4770AG in terms of optimized efficiency, thermal performance and EMI.

Intended audience

This document is intended for power supply design/application engineers, students, etc. who wish to design low-cost and highly reliable systems of off-line SMPS, either for auxiliary power supplies for white goods, PCs, servers and TVs, or enclosed adapters for Blu-ray players, set-top boxes, games consoles, etc.

Table of contents

| | |
|--|----|
| About this document | 1 |
| Table of contents | 1 |
| 1 Abstract..... | 3 |
| 2 Demo board | 4 |
| 3 Specification of the demo board..... | 5 |
| 4 Circuit description | 6 |
| 4.1 Line input..... | 6 |
| 4.2 Start-up..... | 6 |
| 4.3 Integrated CoolMOS™ with frequency reduction control | 6 |
| 4.4 Frequency jittering..... | 7 |
| 4.5 RCD clamper circuit..... | 7 |
| 4.6 Output stage | 7 |
| 4.7 Feedback loop | 7 |
| 4.8 Active Burst Mode (ABM) | 7 |
| 5 Protection features | 8 |
| 6 Circuit diagram | 9 |
| 7 PCB layout | 10 |
| 7.1 Top side | 10 |
| 7.2 Bottom side | 10 |
| 8 Bill of Materials (BOM)..... | 11 |
| 9 Transformer construction | 12 |
| 10 Test results | 13 |
| 10.1 Efficiency, regulation and output ripple..... | 13 |

Abstract

| | | |
|-----------|---|-----------|
| 10.2 | Efficiency..... | 14 |
| 10.3 | Standby power | 14 |
| 10.4 | Line regulation | 15 |
| 10.5 | Load regulation | 15 |
| 10.6 | Maximum input power | 16 |
| 10.7 | Frequency reduction | 16 |
| 10.8 | Surge immunity (EN 61000-4-5) | 17 |
| 10.9 | Conducted emissions (EN 55022 class B) | 17 |
| 10.10 | Thermal measurements..... | 20 |
| 11 | Waveforms and oscilloscope plots..... | 21 |
| 11.1 | Start-up at full load | 21 |
| 11.2 | Soft-start at full load | 21 |
| 11.3 | Drain and CS voltage at full load | 22 |
| 11.4 | Frequency jittering at full load..... | 22 |
| 11.5 | Load transient response (dynamic load from 10% to 100%) | 23 |
| 11.6 | Output ripple voltage at full load | 23 |
| 11.7 | Output ripple voltage at ABM (0.5 W load) | 24 |
| 11.8 | Entering ABM | 24 |
| 11.9 | During ABM | 25 |
| 11.10 | Leaving ABM | 25 |
| 11.11 | Line OVP (non-switch auto restart)..... | 26 |
| 11.12 | V _{CC} OV/UV protection | 26 |
| 11.13 | Over-load protection..... | 27 |
| 11.14 | V _{CC} short-to-GND..... | 27 |
| 12 | References | 28 |
| | Revision history | 28 |

Abstract

1 Abstract

This document is an engineering report for a 14 W 15 V 5 V demo board designed in an FF non-isolated Flyback converter topology with primary-side feedback (FB) using the fifth-generation FF CoolSET™ ICE5AR4770AG. The demo board is operated in Discontinuous Conduction Mode (DCM) and is running at 100 kHz fixed switching frequency. The frequency reduction with soft gate driving and frequency jittering offers lower EMI and better efficiency between light load and 50% load. The selectable Active Burst Mode (ABM) power enables ultra-low power consumption. In addition, numerous adjustable protection functions have been implemented in ICE5AR4770AG to protect the system and customize the IC for the chosen application. In case of failure modes such as line OV, V_{CC} OV/Under Voltage (UV), open control-loop or over-load, over-temperature, V_{CC} short-to-GND and CS short-to-GND, the device enters protection mode. By means of the cycle-by-cycle Peak Current Limitation (PCL), the dimensions of the transformer and the current rating of the secondary diode can both be optimized. In this way, a cost-effective solution can easily be achieved. The target applications of ICE5AR4770AG are either auxiliary power supplies for white goods, PCs, servers and TVs, or enclosed adapters for Blu-ray players, set-top boxes, games consoles, etc.

2 Demo board

This document contains the list of features, the power supply specifications, schematics, Bill of Materials (BOM) and the transformer construction documentation. Typical operating characteristics such as performance curve and scope waveforms are shown at the end of the report.

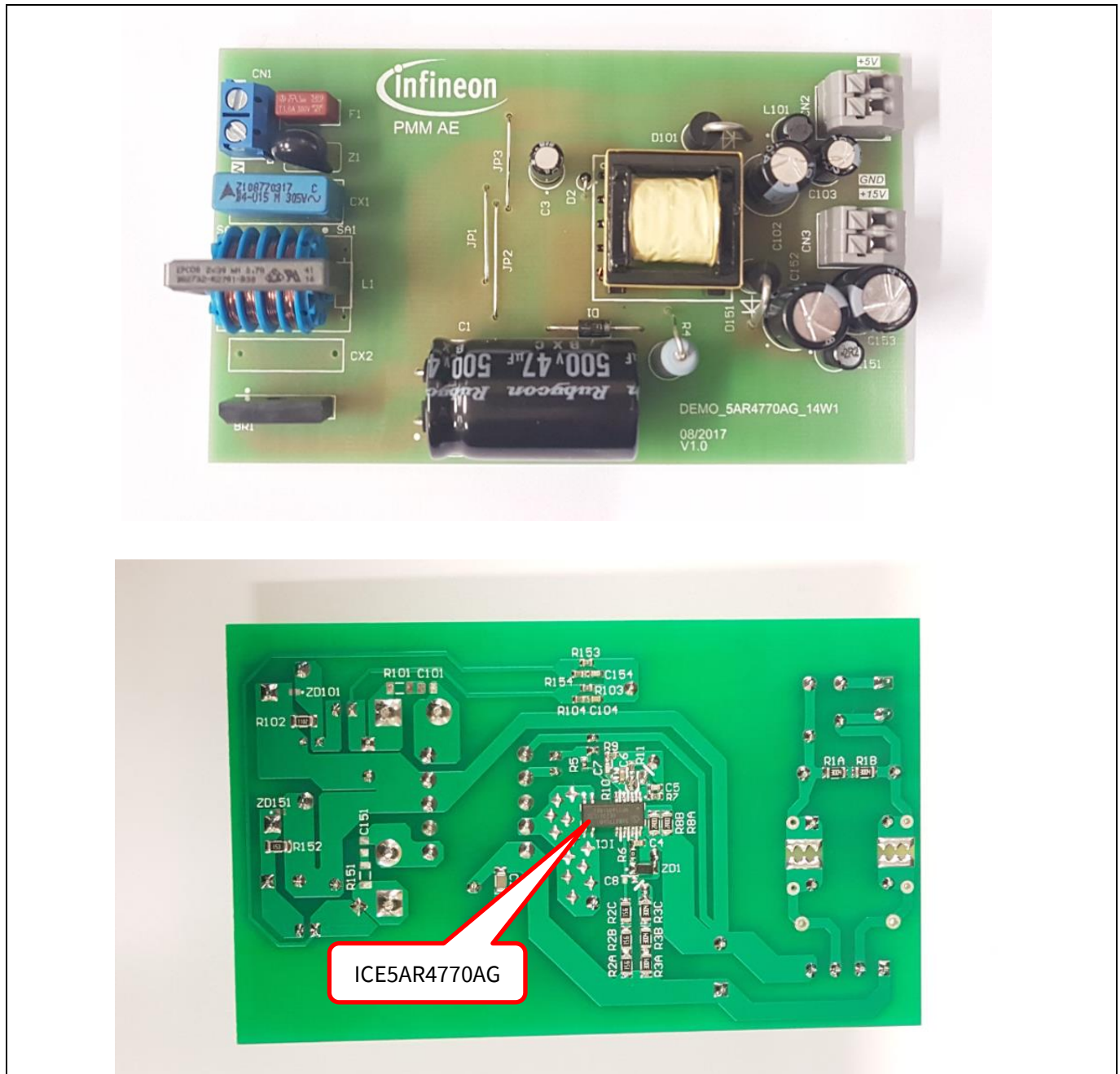


Figure 1 DEMO_5AR4770AG_14W1

3 Specification of the demo board

Table 1

| | |
|--|---|
| Input voltage and frequency | 85 V AC (60 Hz) ~ 300 V AC (50 Hz) |
| Output voltage, current and power | $(15\text{ V} \times 0.83\text{ A}) + (5\text{ V} \times 0.40\text{ A}) = 14.45\text{ W}$ |
| Regulation | +5 V: less than $\pm 5\%$ +15 V: less than $\pm 15\%$ |
| Output ripple voltage (full load, 85 V AC ~ 300 V AC) | $5\text{ V}_{\text{ripple_p_p}} < 100\text{ mV}$ $15\text{ V}_{\text{ripple_p_p}} < 200\text{ mV}$ |
| Active mode four-point average efficiency (25%, 50%, 75%, 100% load) | > 83% at 115 V AC and 230 V AC |
| Standby power consumption | No load: $P_{\text{IN}} < 100\text{ mW}$ at 230 V AC 60 mW load: $P_{\text{IN}} < 170\text{ mW}$ at 230 V AC |
| Conducted emissions (EN 55022 class B) | Pass with 6.3 dB margin for 115 V AC and 8.4 dB margin for 230 V AC |
| Surge immunity (EN 61000-4-5) | Installation class 4 ($\pm 2\text{ kV}$ for line-to-line) |
| Form factor case size (L × W × H) | $(110 \times 66 \times 27)\text{ mm}^3$ |

Note: “The demo board is designed for dual-output with cross-regulated loop FB. It may not regulate properly if loading is applied only to single-output. If the user wants to evaluate for single-output (15 V only) conditions, the following changes are necessary on the board.

1. Remove D101, L101, C102, C103, R102, R103, R104 and C104 (to disable 5 V output).
2. Change R11 to 30 k Ω and R153 to 220 k Ω (full regulation FB at 15 V output).

Since the board (especially the transformer) is designed for dual-output with optimized cross-regulation, single-output efficiency might not be optimized. It is only for IC functional evaluation under single-output conditions.”

Circuit description

4 Circuit description

4.1 Line input

The AC-line input side comprises the input fuse F1 as Over Current Protection (OCP). The choke L1 and X-capacitor CX1 act as EMI suppressors. Optional spark-gap devices SA1, SA2 and varistor Z1 can absorb HV stress during a lightning surge test. A rectified DC voltage (120 ~ 424 V DC) is obtained through the bridge rectifier BR1 together with bulk capacitor C1.

4.2 Start-up

To achieve fast and safe start-up, ICE5AR4770AG has been implemented with start-up resistor and V_{CC} short-to-GND protection. When V_{VCC} reaches the turn-on voltage threshold of 16 V, the IC begins with a soft-start. The soft-start implemented in ICE5AR4770AG is a digital time-based function. The preset soft-start time is 12 ms with four steps. If not limited by other functions, the peak voltage on the CS pin will increase incrementally from 0.3 V to 0.8 V. After IC turn-on, the V_{CC} voltage is supplied by auxiliary windings of the transformer. V_{CC} short-to-GND protection is implemented during the start-up time.

4.3 Integrated CoolMOS™ with frequency reduction control

ICE5AR4770AG is comprised of a CoolMOS™ and the frequency reduction controller, which enables better efficiency between light load and 50% load. This integrated solution greatly simplifies the circuit layout and reduces the cost of PCB manufacturing. The new CoolSET™ can be operated in either DCM or Continuous Conduction Mode (CCM) with frequency reduction mode. This demo board is designed to operate in DCM. When the system is operating at maximum power, the controller will switch at the FF of 100 kHz. In order to achieve better efficiency between light load and medium load, frequency reduction is implemented and the reduction curve is shown in Figure 2. The V_{CS} is clamped by the current limitation threshold or by the PWM op-amp while the switching frequency is reduced. After the maximum frequency reduction, the minimum switching frequency is f_{OSC4_MIN} (43 kHz).

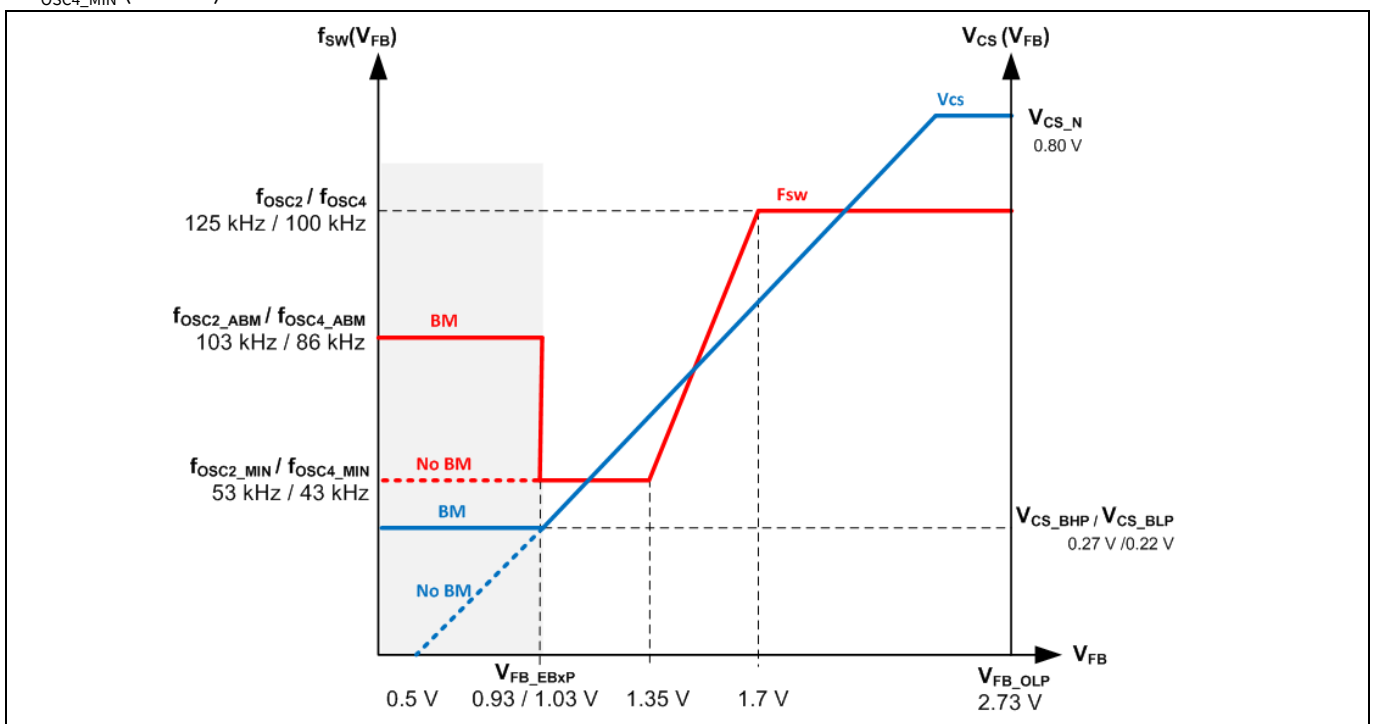


Figure 2 Frequency reduction curve

Circuit description

4.4 Frequency jittering

The ICE5AR4770AG has a frequency jittering feature to reduce the EMI noise. The jitter frequency is internally set at 100 kHz (± 4 kHz), and the jitter period is 4 ms.

4.5 RCD clamper circuit

A clamper network (R4, C2 and D1) dissipates the energy of the leakage inductance and suppresses ringing on the SMPS transformer.

4.6 Output stage

There are two outputs in this converter, 15 V and 5 V. The power is coupled out via Schottky diodes D151 and D101. The capacitors C152 and C102 provide energy buffering, followed by the L-C filters L151-C153 and L101-C103 to reduce the output voltage ripple and prevent interference between SMPS switching frequency and line frequency. Storage capacitors C152 and C102 are selected to have a very small internal resistance (ESR) to minimize the output voltage ripple.

4.7 Feedback loop

For FB, the output is sensed by the voltage divider of R11, R103 and R153 compared to the internal reference voltage of ICE5AR4770AG via the V_{ERR} pin, which is connected to the input of an integrated error amplifier internally. Connecting this pin enables non-isolated application. Feed-forward circuit R154, C154, R104 and C104 comprises the compensation network. The comparison voltage is converted to the current signal via an IC internal error amplifier to the FB pin for regulation control.

4.8 Active Burst Mode (ABM)

ABM entry and exit power (three levels) can be selected in ICE5AR4770AG. Details are illustrated in the product datasheet. Under light-load conditions, the SMPS enters ABM. At this stage, the controller is always active but the V_{VCC} must be kept above the switch-off threshold. During ABM, the efficiency increases significantly and at the same time it supports low ripple on V_{out} and fast response on load-jump.

In order to enter ABM operation, two conditions must apply:

1. The FB voltage must be lower than the threshold of V_{FB_EBXP} .
2. There must be a certain blanking time ($t_{FB_BEB} = 36$ ms).

Once both of these conditions are fulfilled, the ABM flip-flop is set and the controller enters ABM operation. This dual-condition determination for entering ABM operation prevents mis-triggering of ABM, so that the controller enters ABM operation only when the output power is really low during the preset blanking time.

During ABM, the maximum Current Sense (CS) voltage is reduced from V_{CS_N} to V_{CS_BXP} to reduce the conduction loss and the audible noise. In ABM, the FB voltage is changing like a sawtooth between $V_{FB_Bon_NISO}$ and $V_{FB_Boff_NISO}$.

The FB voltage immediately increases if there is a high load-jump. This is observed by one comparator. As the current limit is 27/33% during ABM a certain load is needed so that the FB voltage can exceed V_{FB_LB} (2.73 V).

After leaving ABM, maximum current can now be provided to stabilize V_{out} .

Protection features

5 Protection features

Protection is one of the major factors in determining whether the system is safe and robust. Therefore sufficient protection is necessary. ICE5AR4770AG provides comprehensive protection to ensure the system is operating safely. These protections include line OV, V_{CC} OV and UV, over-load, over-temperature (controller junction), CS short-to-GND and V_{CC} short-to-GND. When those faults are found, the system will enter protection mode until the fault is removed, when the system resumes normal operation. A list of protections and the failure conditions are shown in the table below.

Table 2 Protection functions of ICE5AR4770AG

| Protection function | Failure condition | Protection mode |
|---|--|-------------------------|
| Line OV | $V_{VIN} > 2.85 \text{ V}$ | Non-switch auto restart |
| V_{CC} OV | $V_{VCC} > 25.5 \text{ V}$ | Odd-skip auto restart |
| V_{CC} UV | $V_{VCC} < 10 \text{ V}$ | Auto restart |
| Over-load | $V_{FB} > 2.73 \text{ V}$ and lasts for 54 ms | Odd-skip auto restart |
| Over-temperature (junction temperature of controller chip only) | $T_J > 140^\circ\text{C}$ | Non-switch auto restart |
| CS short-to-GND | $V_{CS} < 0.1 \text{ V}$, last for 0.4 μs and three consecutive pulses | Odd-skip auto restart |
| V_{CC} short-to-GND ($V_{VCC} = 0 \text{ V}$, $R_{\text{Start-up}} = 50 \text{ M}\Omega$ and $V_{\text{DRAIN}} = 90 \text{ V}$) | $V_{VCC} < 1.2 \text{ V}$, $I_{VCC_Charge1} \approx -0.27 \text{ mA}$ | Cannot start up |

6 Circuit diagram

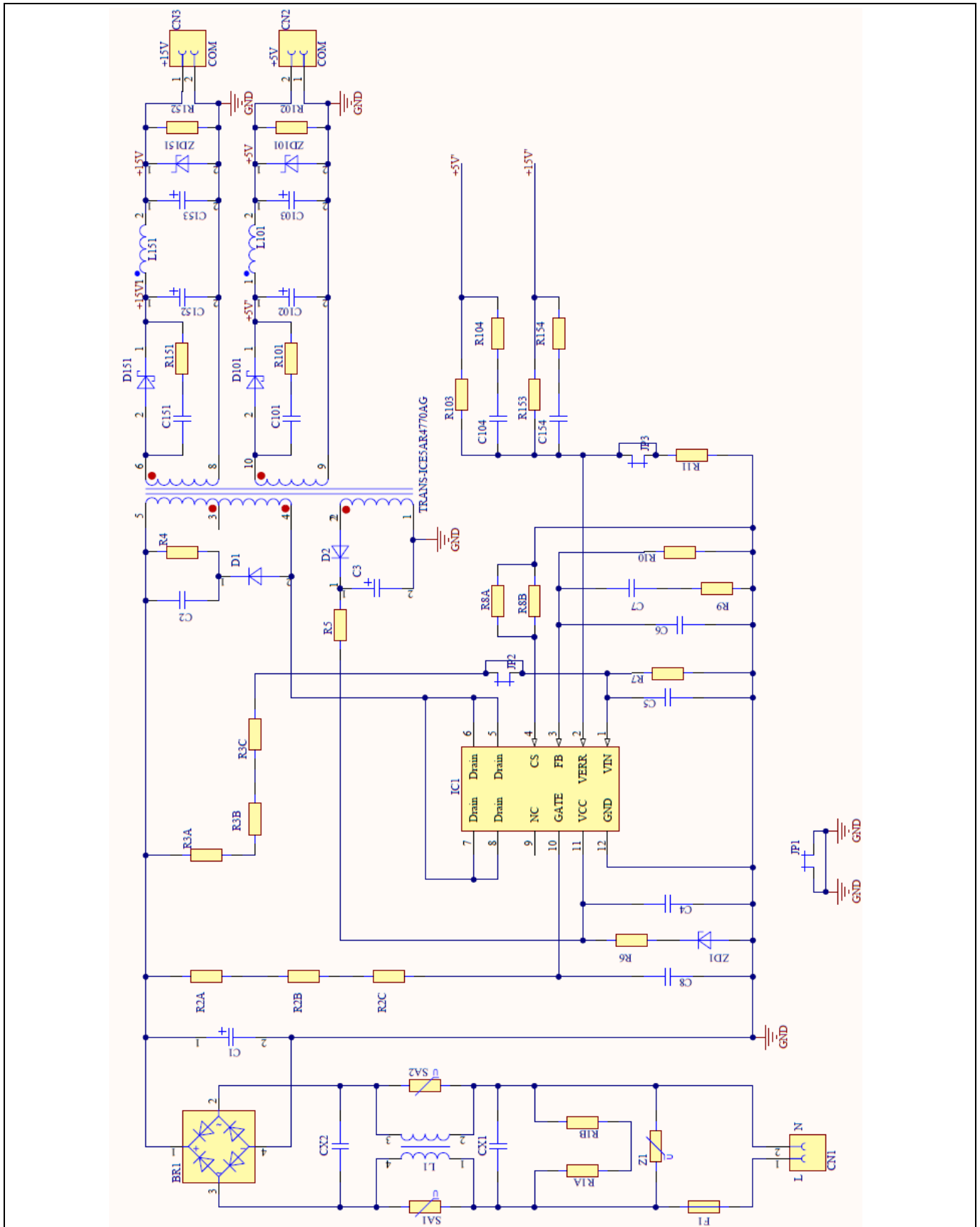


Figure 3 Schematic of DEMO_5AR4770AG_14W1

7 PCB layout

7.1 Top side

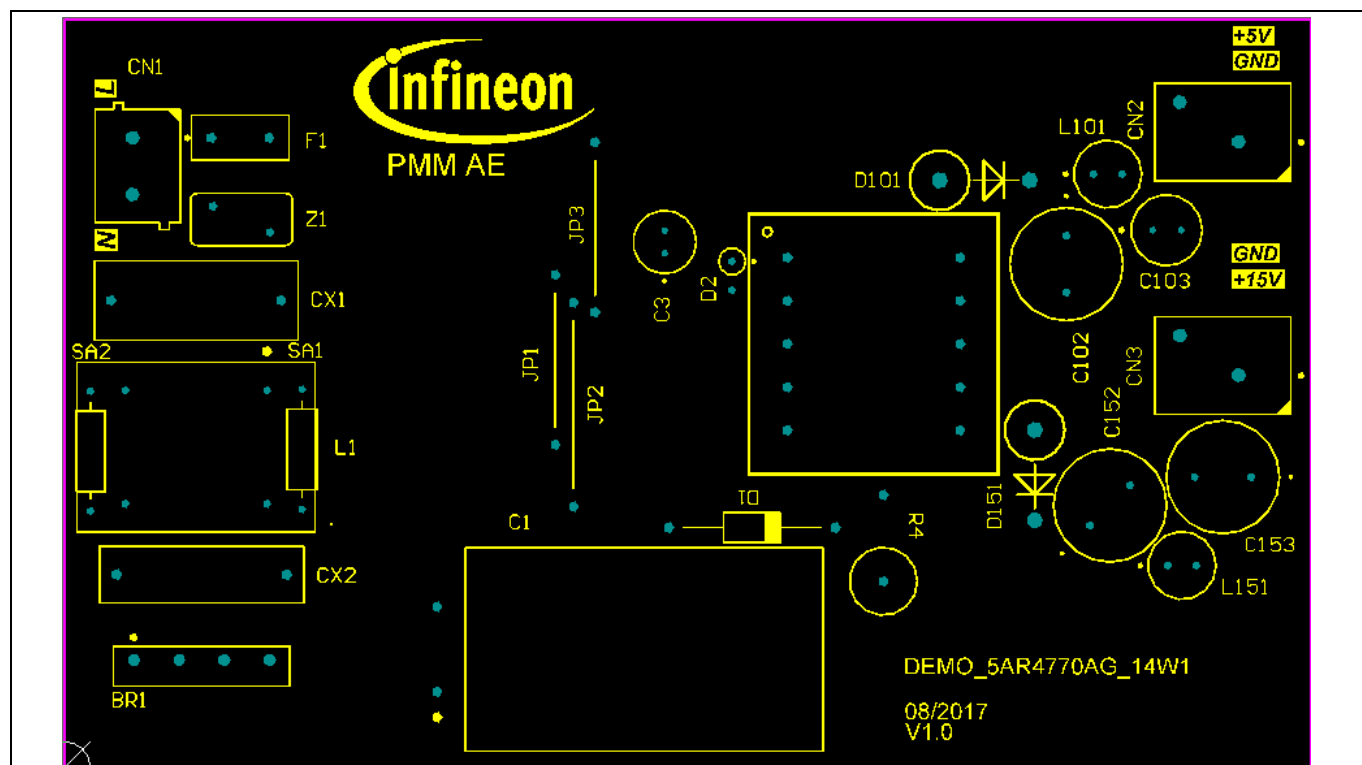


Figure 4 **Top side component legend**

7.2 Bottom side

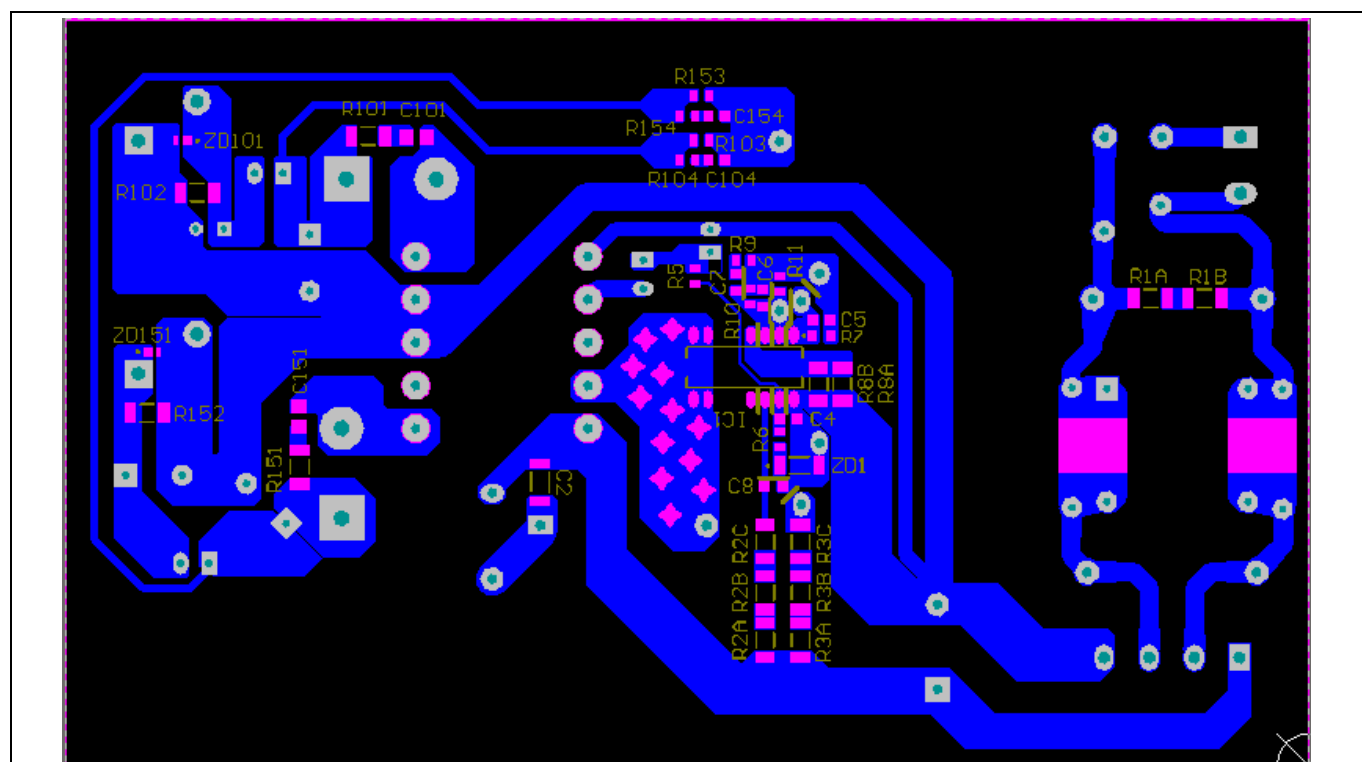


Figure 5 **Bottom side copper and component legend**

Bill of Materials (BOM)

8 Bill of Materials (BOM)

Table 3 BOM

| No. | Designator | Description | Part number | Manufacturer | Quantity |
|-----|---------------|--|---------------------|-------------------|----------|
| 1 | F1 | 1.6 A/300 V | 36911600000 | Littlefuse | 1 |
| 2 | Z1 | Varistor, 0.3 W/320 V | ERZE07A511 | Panasonic | 1 |
| 3 | BR1 | 600 V/1 A | S1VBA60 | Shindengen | 1 |
| 4 | CX1 | 0.15 μ F, X-cap | B32922C3154M000 | EPCOS / TDK | 1 |
| 5 | C1 | 47 μ F/500 V | 500BXC47MEFC18X31.5 | Rubycon | 1 |
| 6 | C2 | 1 nF/630 V (1206) | GRM31A7U2J102JW31D | Murata | 1 |
| 7 | C3 | 22 μ F/50 V | 50PX22MEFC5X11 | Rubycon | 1 |
| 8 | C4 | 0.1 μ F/50 V DC | GRM188R71H104KA93D | Murata | 1 |
| 9 | C5, C154 | 1000 pF/50 V DC | GRM1885C1H102GA01D | Murata | 2 |
| 10 | C6, C104 | 4700 pF/50 V DC | GRM188R71H472KA01D | Murata | 2 |
| 11 | C7 | 15 pF/50 V DC | GRM1885C1H150JA01D | Murata | 1 |
| 12 | C102 | 680 μ F/10 V DC | 10ZL680MEFC8X16 | RUBYCON | 1 |
| 13 | C103 | 330 μ F/10 V DC | 10ZLH330MEFC6.3X11 | RUBYCON | 1 |
| 14 | C152, C153 | 680 μ F/25 V DC | 25ZLS680MEFC10X16 | RUBYCON | 2 |
| 15 | ZD1 | 22 V/500 mW | BZS55B22 RXG | | 1 |
| 16 | D1 | 1 A/ 800 V | UF4006-E3/54 | | 1 |
| 17 | D2 | 0.2 A/200 V | 1N485B | | 1 |
| 18 | D151 | 3 A/150 V | STPS3150 | | 1 |
| 19 | D101 | 3 A/60 V | MBR360 | | 1 |
| 20 | IC1 | ICE5AR4770AG | ICE5AR4770AG | Infineon | 1 |
| 21 | L1 | 39 mH/0.7 A | B82732R2701B030 | EPCOS / TDK | 1 |
| 22 | L101, L151 | 2.2 μ H/4.3 A | 744 746 202 2 | Würth Electronics | 2 |
| 23 | R1A, R1B | 3 M Ω /0.25 W/5%/1206 | | | 2 |
| 24 | R2A, R2B, R2C | 15 M Ω /0.25 W/5%/1206 | RC1206JR-0715ML | Yageo | 3 |
| 25 | R3A, R3B, R3C | 3 M Ω /0.25 W/1%/1206 | RC1206FR-073ML | Yageo | 3 |
| 26 | R4 | 68 k Ω /2 W/500 V | MO2CT631R683J | KOA Speer | 1 |
| 27 | R5 | 4.7 Ω /0.1 W/5%/0603 | | | 1 |
| 28 | R6 | 0 Ω /0603 | | | 1 |
| 29 | R7 | 56 k Ω /0.1 W/ \pm 1%/0603 | | | 1 |
| 30 | R8A, R8B | 2 Ω /0.25 W/ \pm 1%/1206 | RC1206FR-072RL | Yageo | 2 |
| 31 | R9 | 260 k Ω /0.1 W/0603 | | | 1 |
| 32 | R11 | 27 k Ω /0.1 W/1%/0603 | | | 1 |
| 33 | R154 | 33 k Ω /0.1 W/1%/0603 | | | 1 |
| 34 | R103 | 68 k Ω /0.1 W/1%/0603 | | | 1 |
| 35 | R104 | 4.7 k Ω /0.1 W/1%/0603 | | | 1 |
| 36 | R153 | 680 k Ω /0.1 W/1%/0603 | | | 1 |
| 37 | R102 | 11 k Ω /0.25 W/5%/1206 | | | 1 |
| 38 | R152 | 15 k Ω /0.25 W/5%/1206 | | | 1 |
| 39 | T1 | 550 μ H, EE20_H | 750343669 | Würth Electronics | 1 |
| 40 | CN1 | Connector | 691102710002 | Würth Electronics | 1 |
| 41 | CN2,CN3 | Connector | 691 412 120 002B | Würth Electronics | 2 |
| 42 | JP1-JP3 | Jumper | | | 3 |
| 43 | PCB | 110 mm \times 66 mm (LXW), single layer, 2 Oz., FR-4 | | | 1 |

14 W 15 V 5 V SMPS demo board with ICE5AR4770AG

DEMO_5AR4770AG_14W1

Transformer construction

9 Transformer construction

Core and materials: EE20/10/6, TP4A (TDG)

Bobbin: 070-4989 (10-pin, THT, horizontal version)

Primary inductance: $L_p = 550 \mu\text{H}$ ($\pm 10\%$), measured between pin 4 and pin 5

Manufacturer and part number: Wurth Electronics Midcom (750343669)

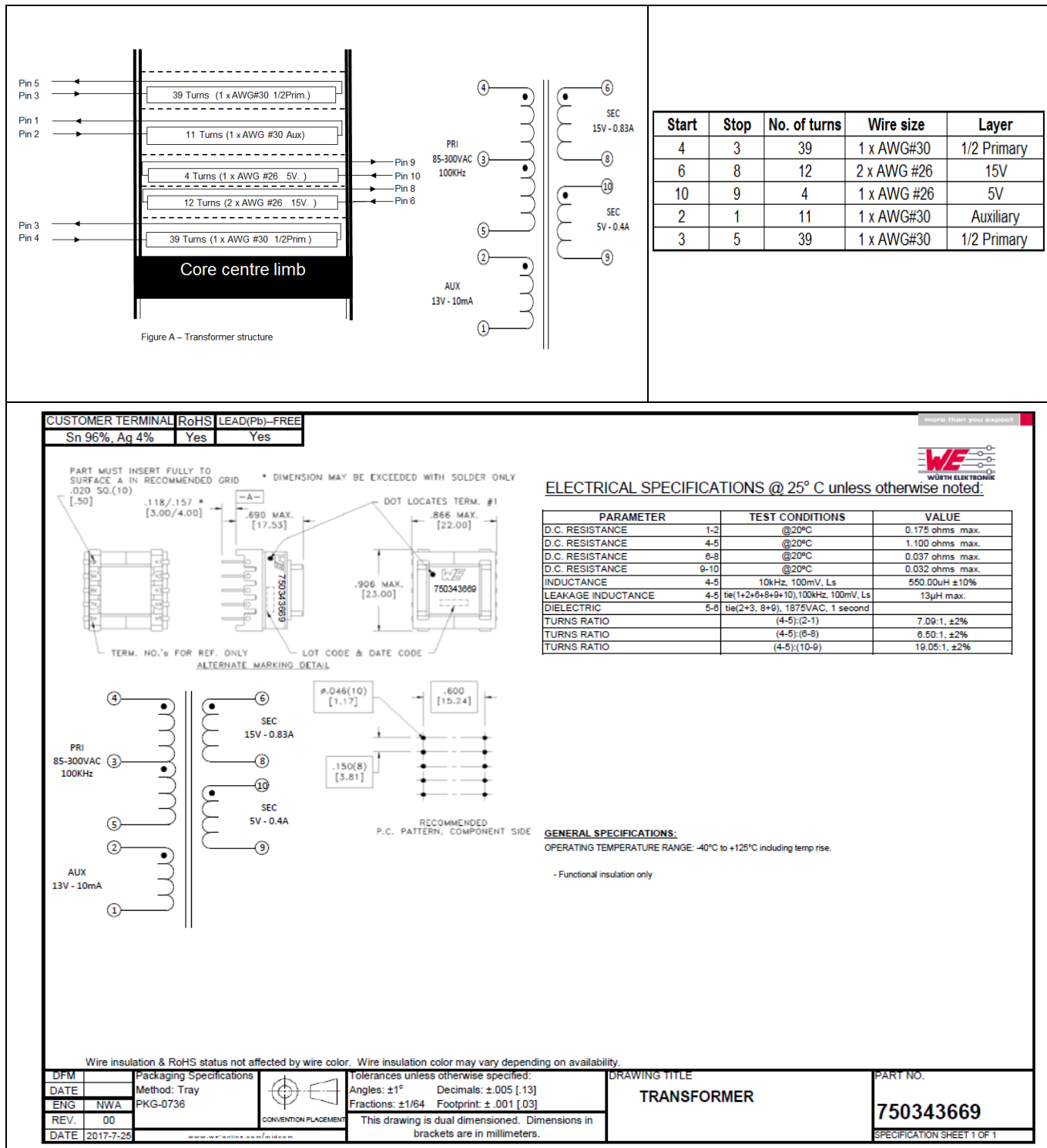


Figure 6 Transformer structure

Test results

10 Test results

10.1 Efficiency, regulation and output ripple

Table 4 Efficiency, regulation and output ripple

| Input (V AC/Hz) | P _{IN} (W) | 15 V (V) | I _{out_15 V} (mA) | 5 V (V) | I _{out_5 V} (mA) | 15 V _{RPP} (mV) | 5 V _{RPP} (mV) | P _{out} (W) | Efficiency (η) (%) | Average η (%) | OLP P _{IN} (W) | OLP I _{out15 V} (fixed 5 V at 0.4 A) (A) |
|--------------------|------------------------|-------------|-------------------------------|------------|------------------------------|-----------------------------|----------------------------|-------------------------|---------------------------------|-----------------------|----------------------------|--|
| 85 V AC/ 60 Hz | 0.039 | 15.18 | 0 | 5.00 | 0 | 27.1 | 12.5 | | | | 22.70 | 1.07 |
| | 0.129 | 16.94 | 0 | 4.82 | 12 | 19.4 | 23 | 0.06 | | | | |
| | 4.469 | 15.21 | 207.8 | 4.99 | 100.1 | 31.8 | 9.9 | 3.66 | 81.90 | 81.95 | | |
| | 8.848 | 15.18 | 414.7 | 4.99 | 200.2 | 45 | 10.5 | 7.29 | 82.44 | | | |
| | 13.326 | 15.20 | 622.3 | 4.98 | 300.3 | 55.1 | 11.3 | 10.95 | 82.20 | | | |
| | 17.992 | 15.22 | 829.6 | 4.98 | 400.3 | 64.2 | 11.5 | 14.62 | 81.25 | | | |
| 115 V AC/ 60 Hz | 0.043 | 15.19 | 0 | 5.00 | 0 | 26.5 | 13.1 | | | | 22.03 | 1.07 |
| | 0.134 | 17.01 | 0 | 4.81 | 12 | 18.9 | 24.7 | 0.06 | | | | |
| | 4.428 | 15.21 | 207.8 | 4.99 | 100.1 | 31.5 | 10 | 3.66 | 82.66 | 83.37 | | |
| | 8.729 | 15.20 | 414.7 | 4.99 | 200.2 | 46.8 | 11.4 | 7.30 | 83.65 | | | |
| | 13.090 | 15.21 | 622.3 | 4.98 | 300.2 | 55.2 | 11.9 | 10.96 | 83.74 | | | |
| | 17.534 | 15.23 | 829.6 | 4.98 | 400.2 | 64.6 | 12.4 | 14.63 | 83.41 | | | |
| 230 V AC/ 50 Hz | 0.069 | 15.24 | 0 | 4.99 | 0 | 30.7 | 13.9 | | | | 21.96 | 1.10 |
| | 0.163 | 17.14 | 0 | 4.80 | 12 | 20.7 | 28.3 | 0.06 | | | | |
| | 4.478 | 15.21 | 207.8 | 4.99 | 100.1 | 33.7 | 10.8 | 3.66 | 81.73 | 83.80 | | |
| | 8.719 | 15.25 | 414.7 | 4.98 | 200.2 | 46.9 | 11.3 | 7.32 | 83.95 | | | |
| | 12.977 | 15.27 | 622.3 | 4.98 | 300.2 | 57.5 | 12.5 | 11.00 | 84.73 | | | |
| | 17.266 | 15.25 | 829.6 | 4.98 | 400.2 | 73 | 12.7 | 14.64 | 84.81 | | | |
| 265 V AC/ 50 Hz | 0.080 | 15.24 | 0 | 4.99 | 0 | 30.5 | 13 | | | | 22.41 | 1.13 |
| | 0.168 | 17.18 | 0 | 4.80 | 12 | 21.5 | 25.8 | 0.06 | | | | |
| | 4.513 | 15.21 | 207.8 | 4.99 | 100.1 | 33.9 | 11.2 | 3.66 | 81.12 | 83.46 | | |
| | 8.750 | 15.24 | 414.7 | 4.99 | 200.2 | 48.8 | 12.5 | 7.32 | 83.61 | | | |
| | 13.034 | 15.27 | 622.3 | 4.98 | 300.2 | 59 | 12.8 | 11.00 | 84.39 | | | |
| | 17.300 | 15.27 | 829.6 | 4.98 | 400.2 | 69.8 | 13.5 | 14.66 | 84.72 | | | |
| 300 V AC/ 50 Hz | 0.093 | 15.25 | 0 | 4.99 | 0 | 34.2 | 13.7 | | | | 22.95 | 1.15 |
| | 0.188 | 17.21 | 0 | 4.79 | 12 | 22.4 | 28.6 | 0.06 | | | | |
| | 4.558 | 15.23 | 207.8 | 4.99 | 100.1 | 35.5 | 12.5 | 3.66 | 80.38 | 82.94 | | |
| | 8.834 | 15.23 | 414.7 | 4.99 | 200.2 | 49.8 | 13.2 | 7.31 | 82.79 | | | |
| | 13.085 | 15.26 | 622.3 | 4.98 | 300.2 | 60.2 | 12.5 | 10.99 | 84.00 | | | |
| | 17.348 | 15.29 | 829.6 | 4.98 | 400.2 | 70.4 | 13.7 | 14.67 | 84.59 | | | |

60 mW load condition: 5 V @ 12 mA and 15 V @ 0 mA

Full-load condition: 5 V @ 400 mA and 15 V @ 830 mA

Test results

10.2 Efficiency

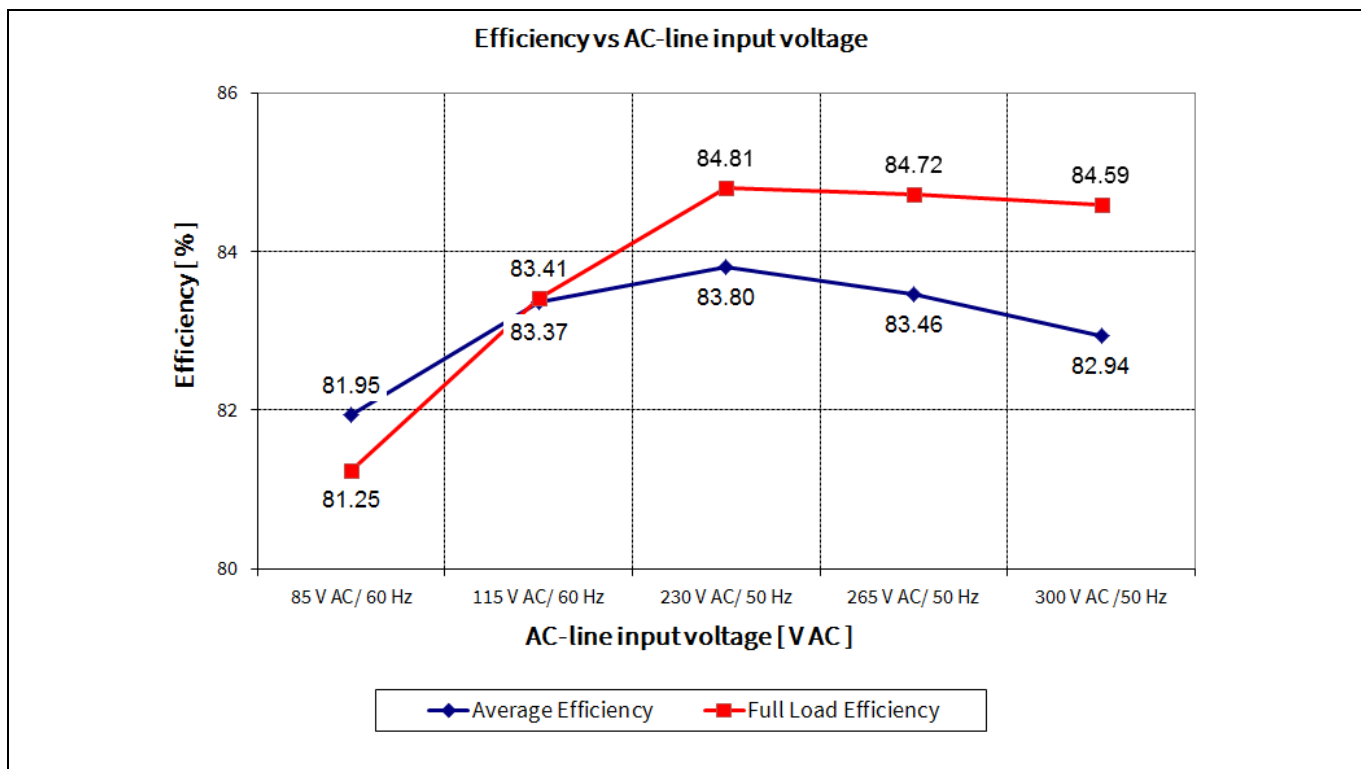


Figure 7 Efficiency vs AC-line input voltage

10.3 Standby power

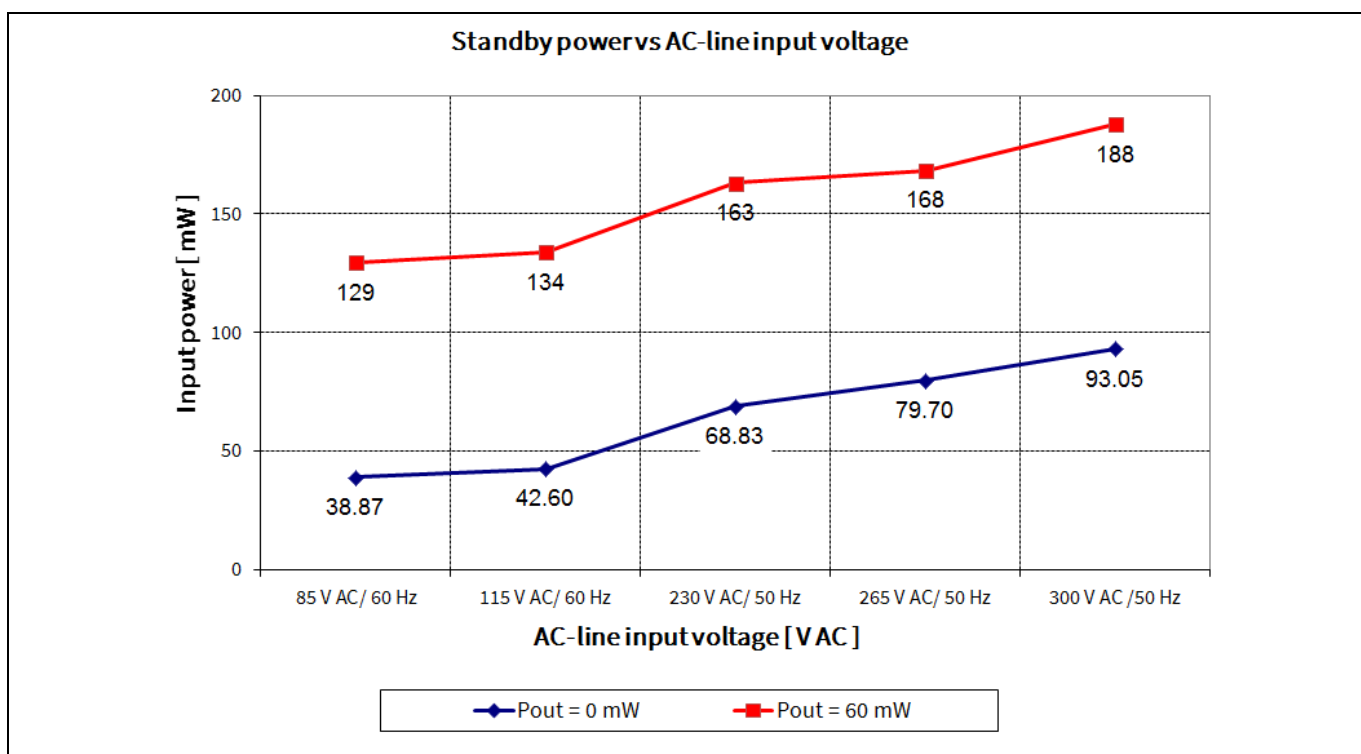


Figure 8 Standby power vs AC-line input voltage (measured by Yokogawa WT310HC power meter – integration mode)

Test results

10.4 Line regulation

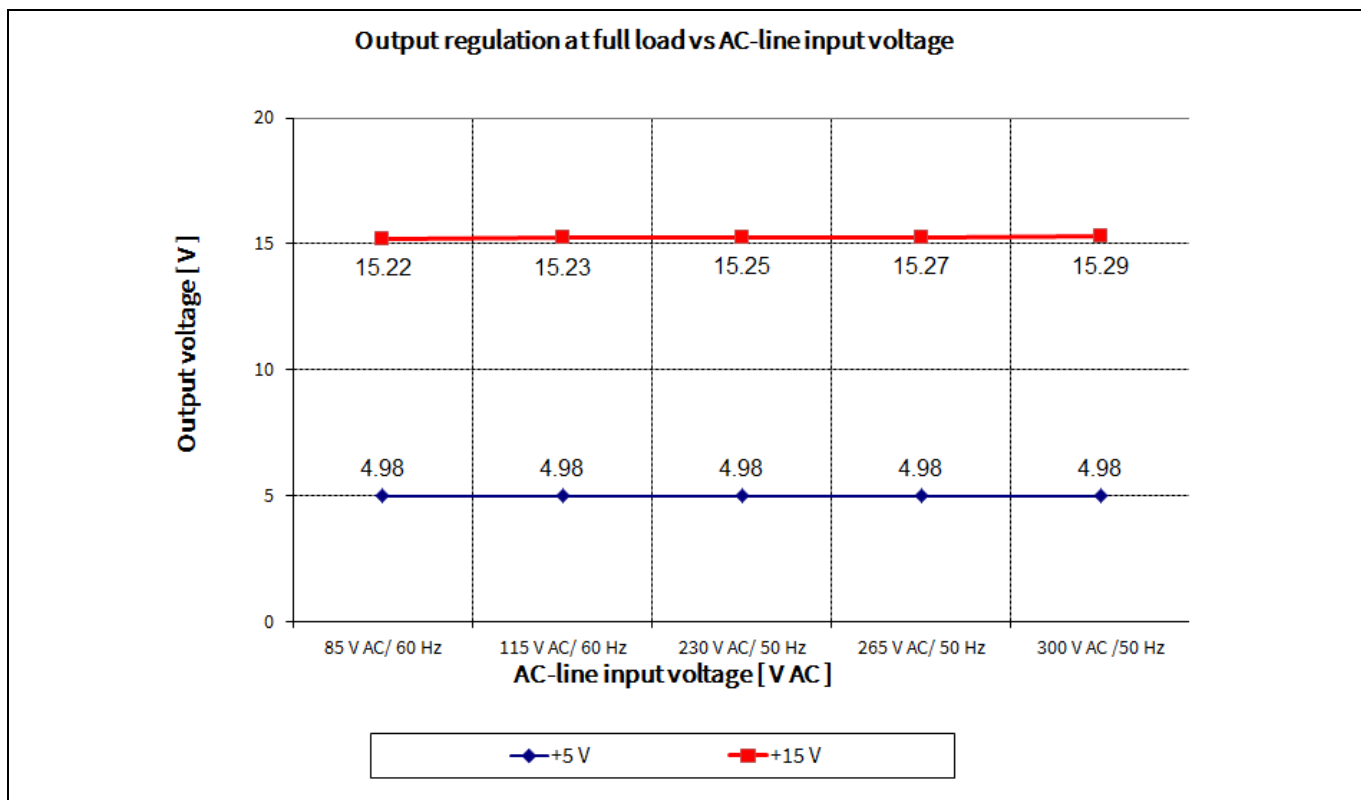


Figure 9 Output regulation at full load vs AC-line input voltage

10.5 Load regulation

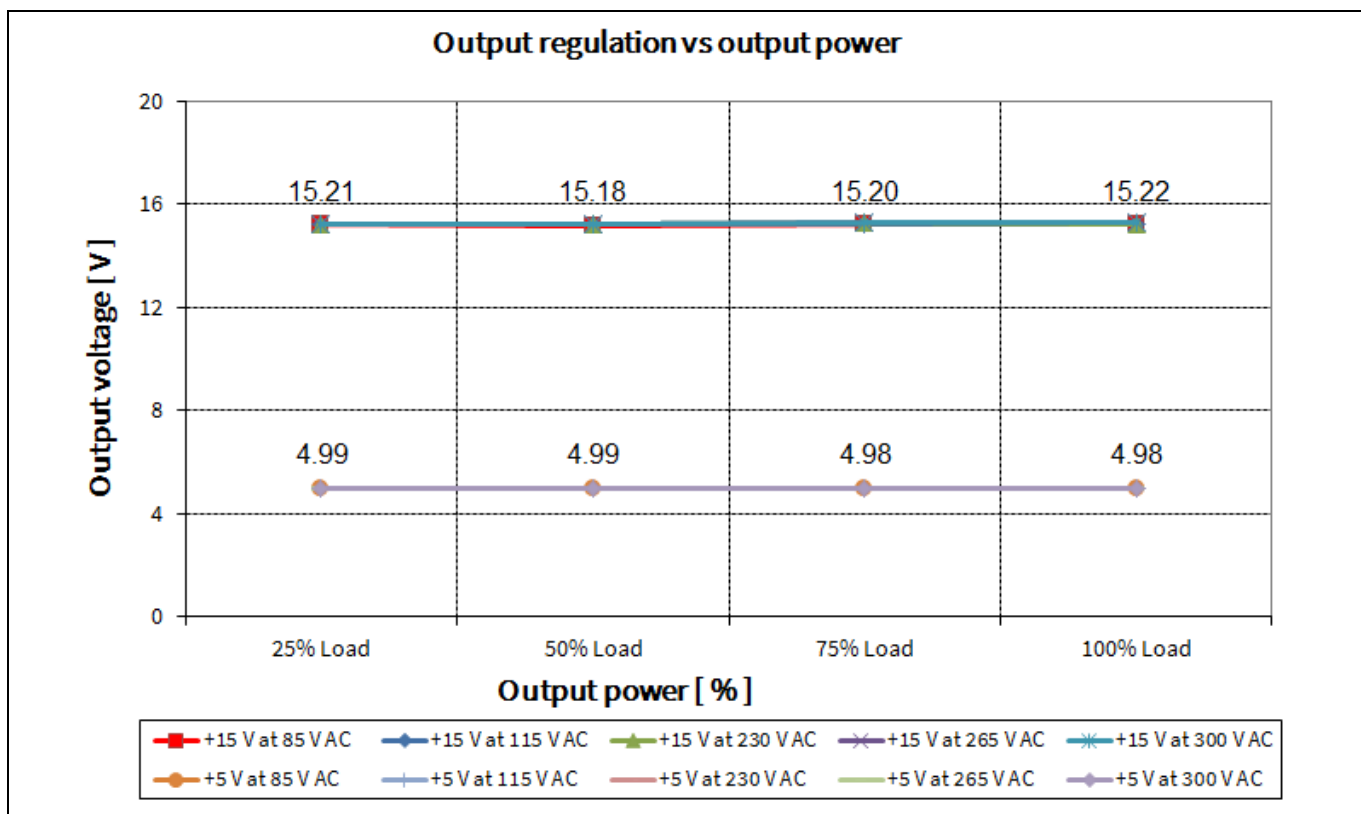


Figure 10 Output regulation vs output power

Test results

10.6 Maximum input power

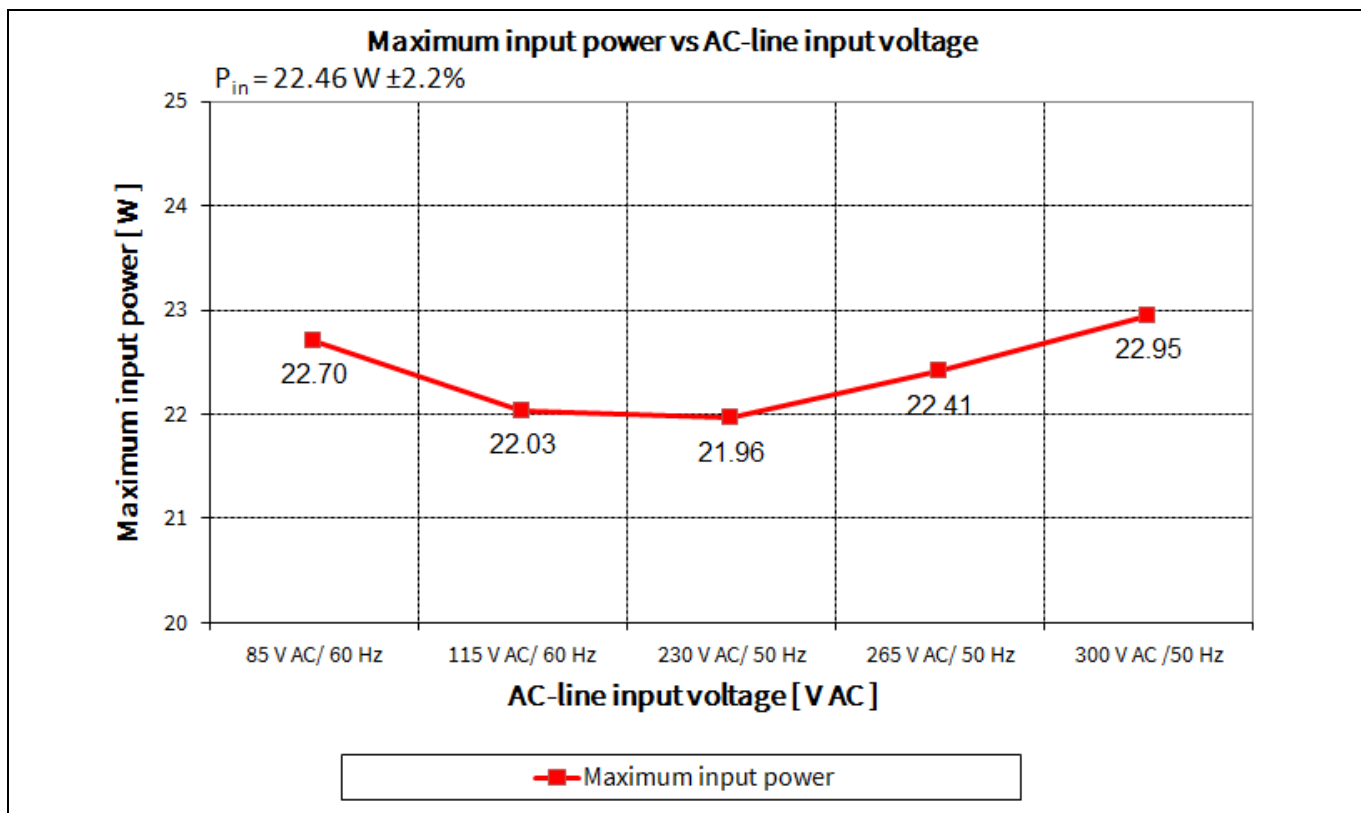


Figure 11 Maximum input power (before over-load protection) vs AC-line input voltage

10.7 Frequency reduction

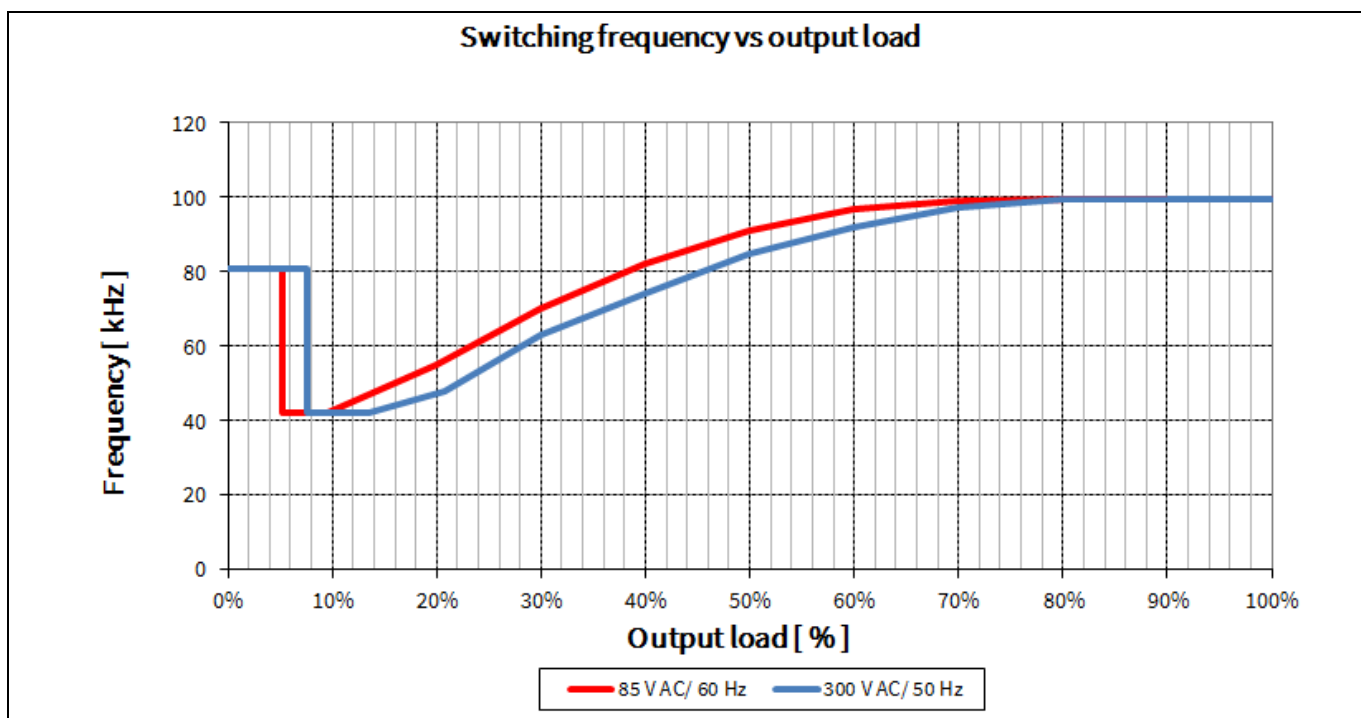


Figure 12 Frequency reduction curve vs output load

Test results

10.8 Surge immunity (EN 61000-4-5)

Pass EN 61000-4-5 installation class 4 (± 2 kV for line-to-line).¹

10.9 Conducted emissions (EN 55022 class B)

The conducted EMI was measured by Schaffner (SMR4503) and followed the test standard of EN 55022 (CISPR 22) class B. The demo board is tested at full load (14.45 W) using resistive load at an input voltage of 115 V AC and 230 V AC.

Pass conducted emissions EN 55022 (CISPR 22) class B with 6.3 dB margin at low-line (115 V AC) and 8.4 dB margin at high-line (230 V AC).

¹ PCB spark-gap distance needs to reduce to 0.5 mm.

Test results

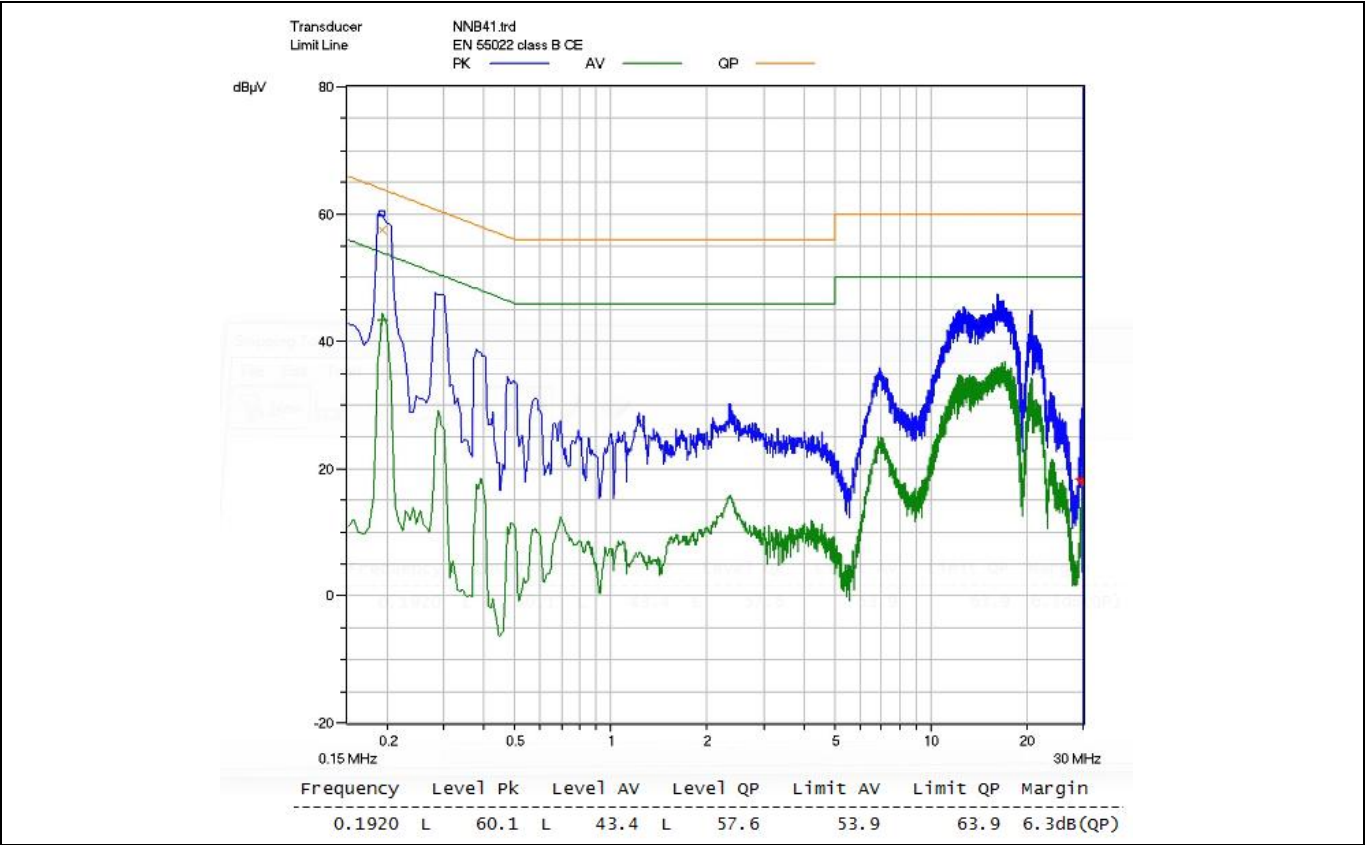


Figure 13 Conducted emissions (line) at 115 V AC and full load

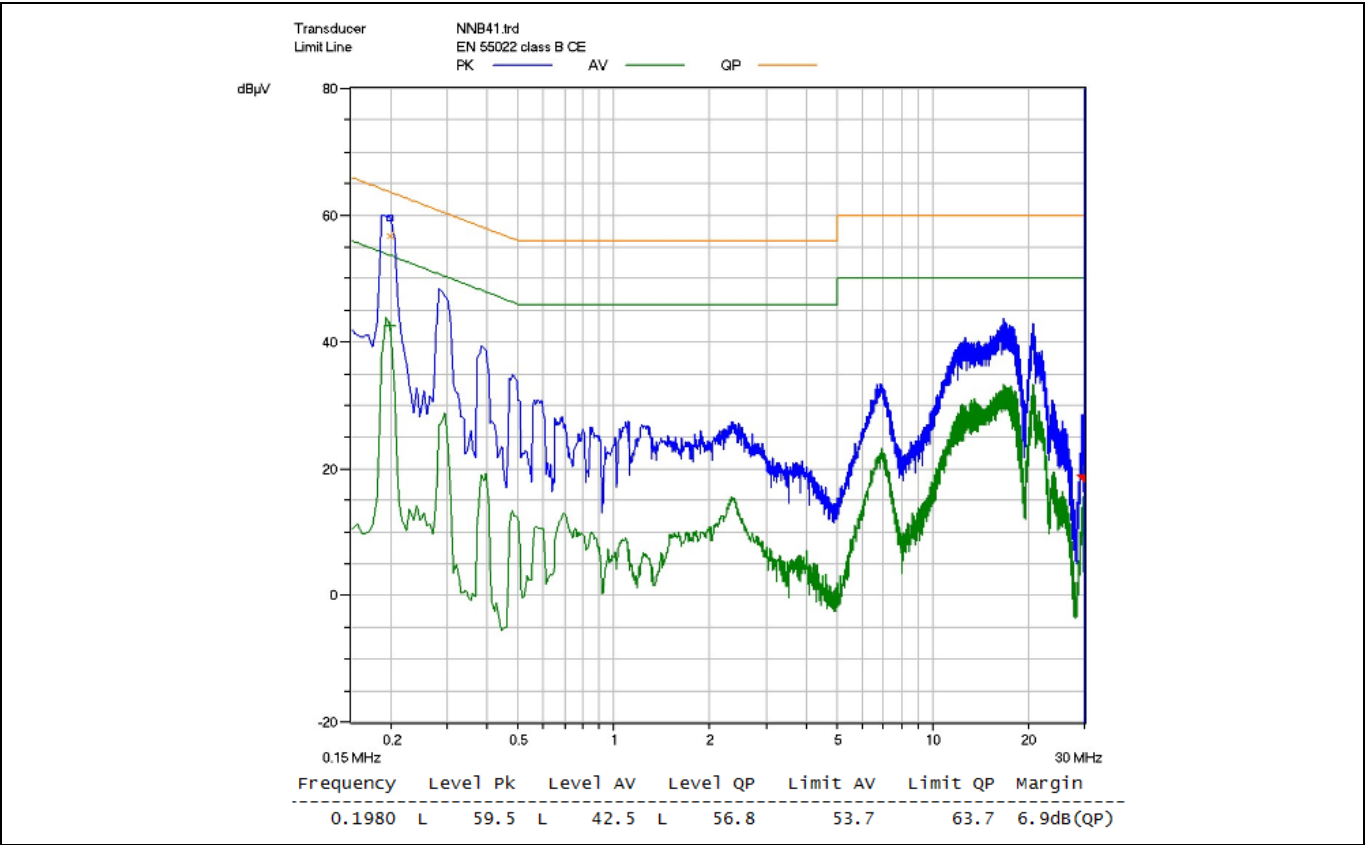


Figure 14 Conducted emissions (neutral) at 115 V AC and full load

Test results

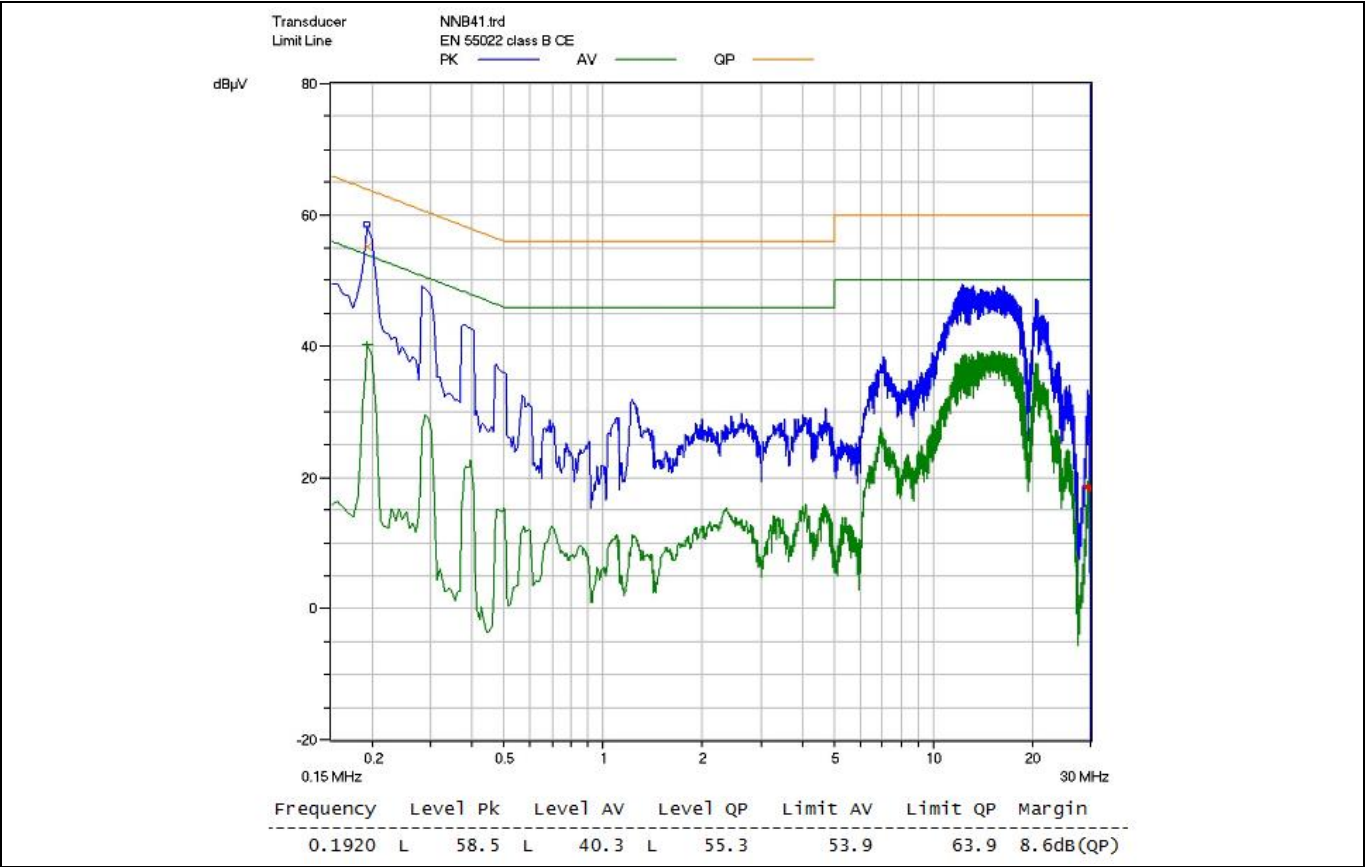


Figure 15 Conducted emissions (line) at 230 V AC and full load

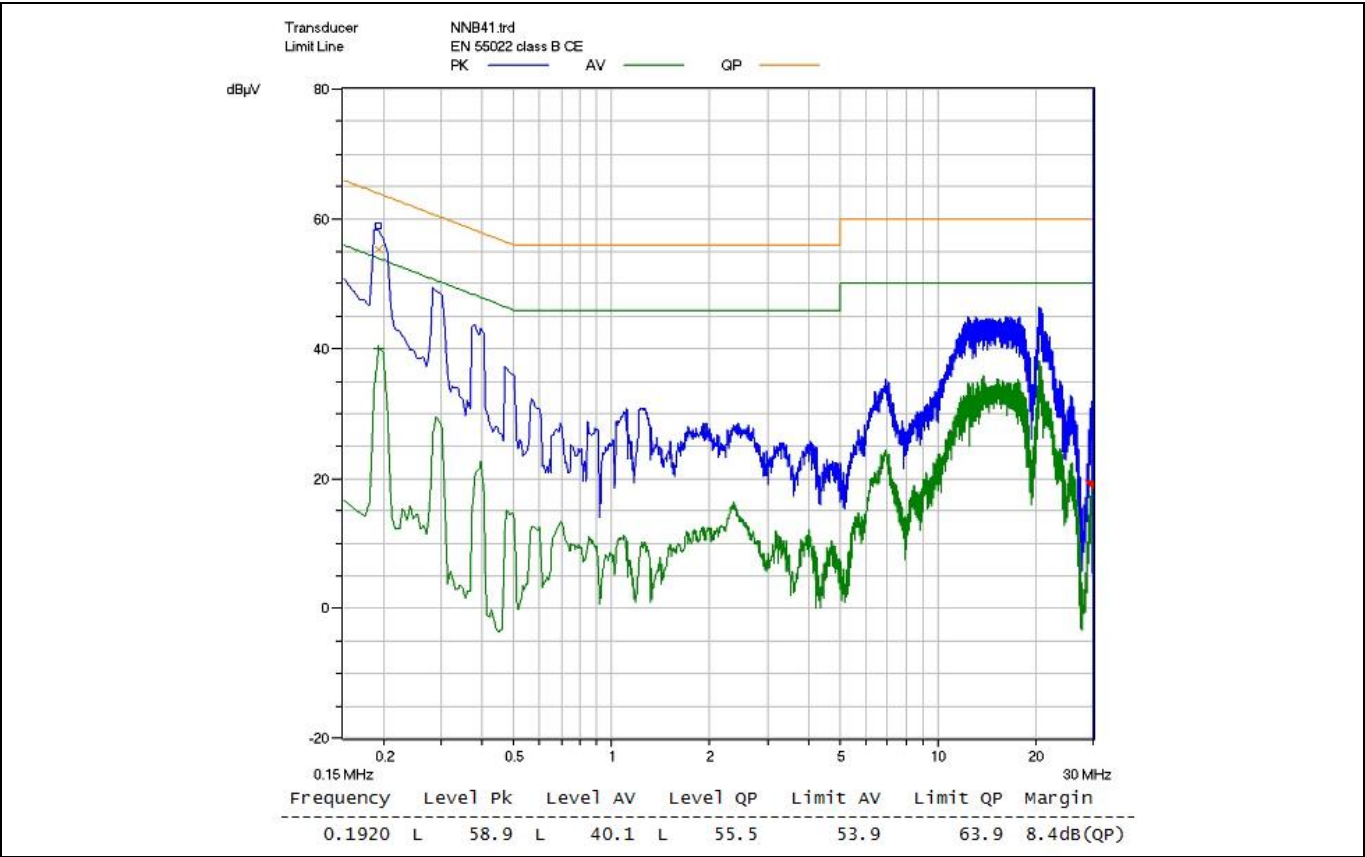


Figure 16 Conducted emissions (neutral) at 230 V AC and full load

Test results

10.10 Thermal measurements

The thermal test of the open-frame demo board was done using an infrared thermography camera (FLIR-T62101) at an ambient temperature of 25°C. The measurements were taken after one hour running at full load.

Table 5 Hottest components on the demo board

| No. | Components | Temperature @ 85 V AC (°C) | Temperature @ 300 V AC (°C) |
|-----|--------------------|----------------------------|-----------------------------|
| 1 | IC1 (ICE5AR4770AG) | 81.2 | 63.3 |
| 2 | L1 (CMC) | 45.5 | 29.6 |
| 3 | T1 (transformer) | 55.7 | 60.4 |
| 4 | D151 (15 V diode) | 63 | 65.3 |

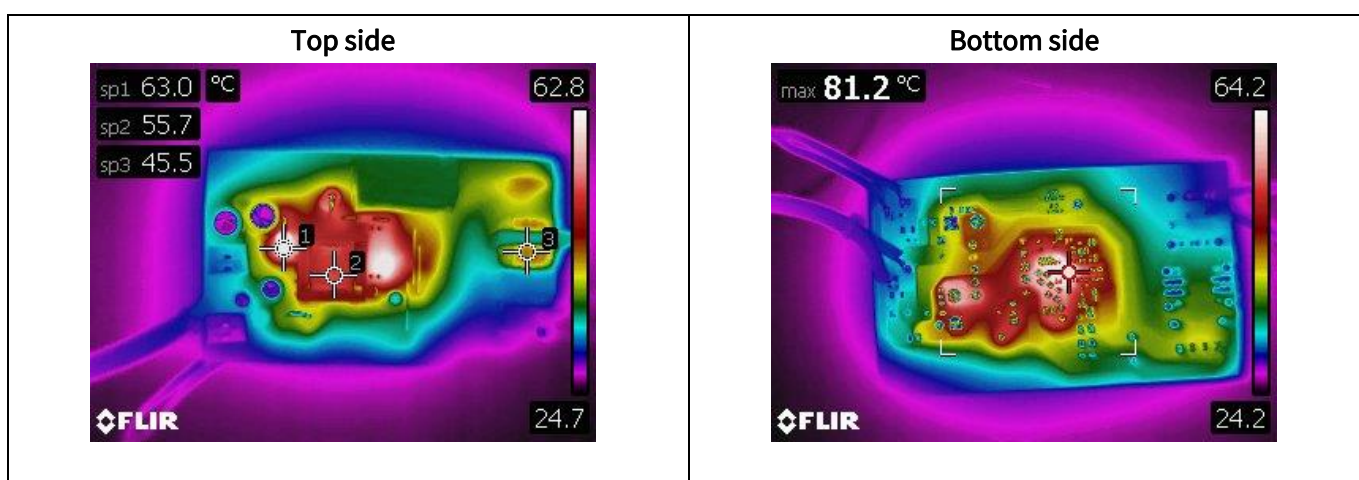


Figure 17 Infrared thermal image of DEMO_5AR4770AG at 85 V AC full load

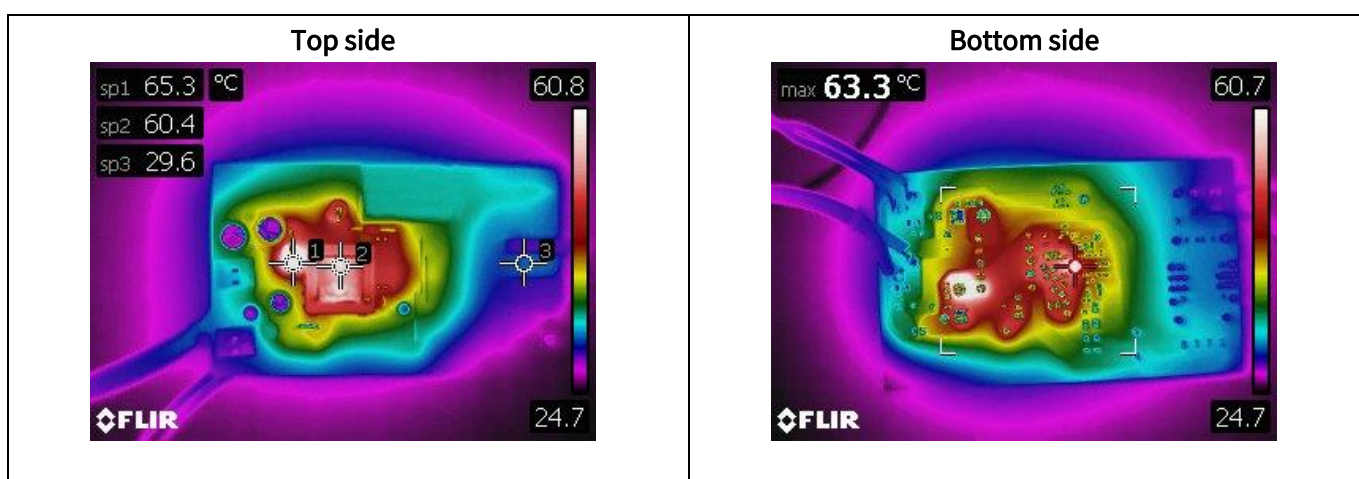


Figure 18 Infrared thermal image of DEMO_5AR4770AG at 300 V AC full load

Waveforms and oscilloscope plots

11 Waveforms and oscilloscope plots

All waveforms and scope plots were recorded with a Teledyne LeCroy 606Zi oscilloscope.

11.1 Start-up at full load

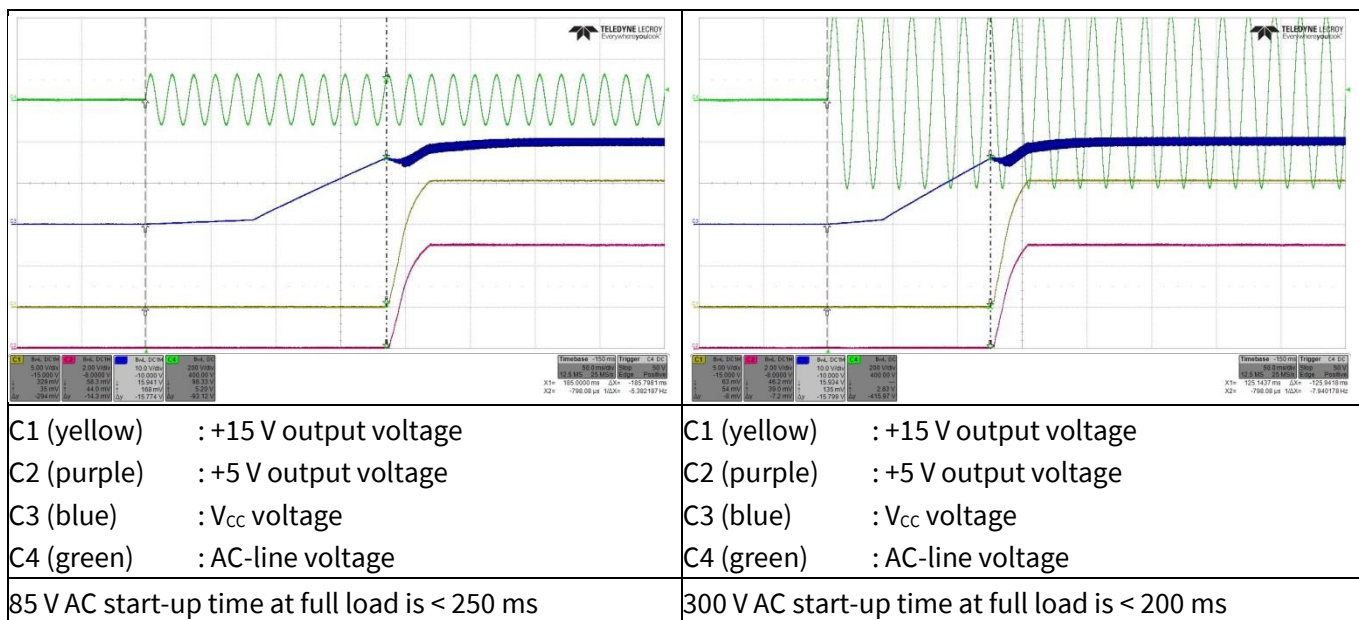


Figure 19 Start-up

11.2 Soft-start at full load

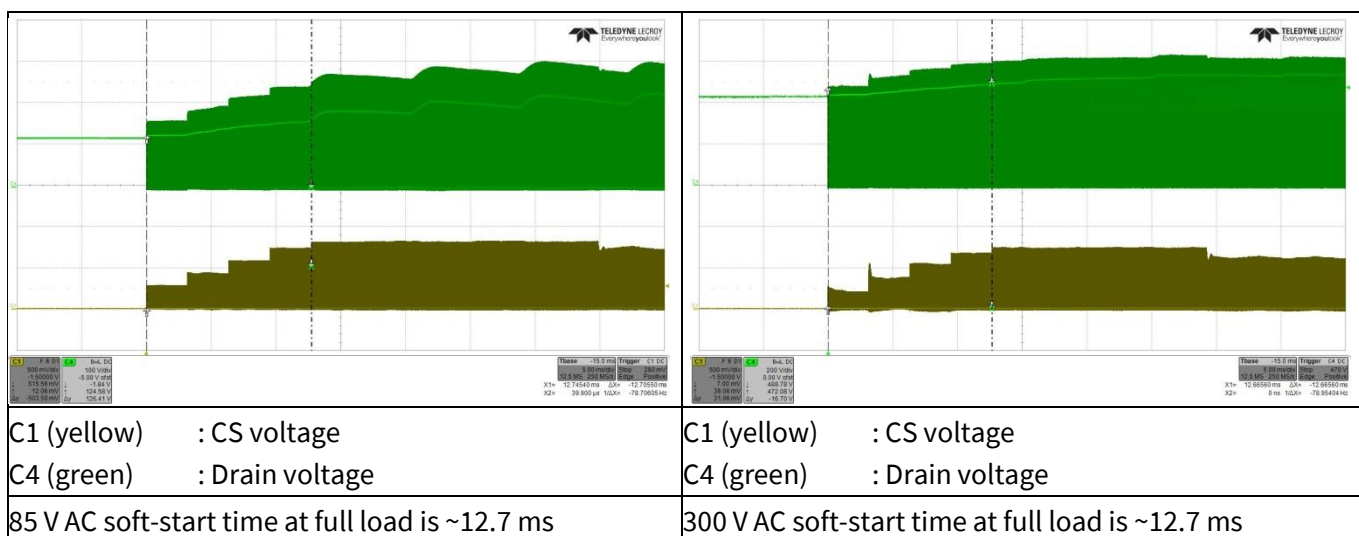


Figure 20 Soft-start

Waveforms and oscilloscope plots

11.3 Drain and CS voltage at full load

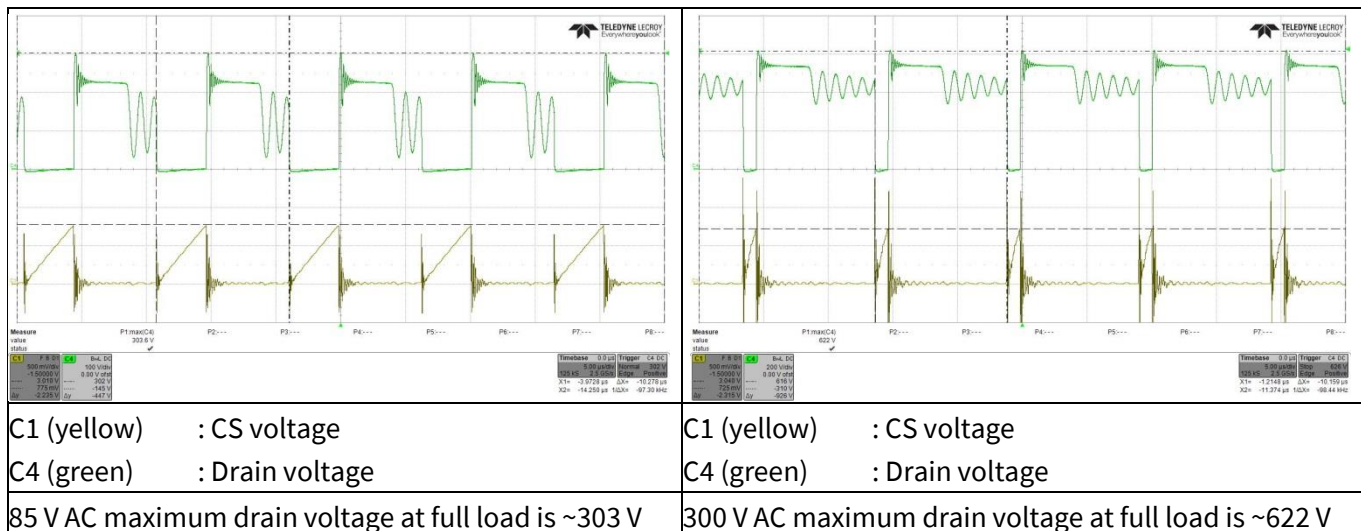


Figure 21 Drain and CS voltage

11.4 Frequency jittering at full load

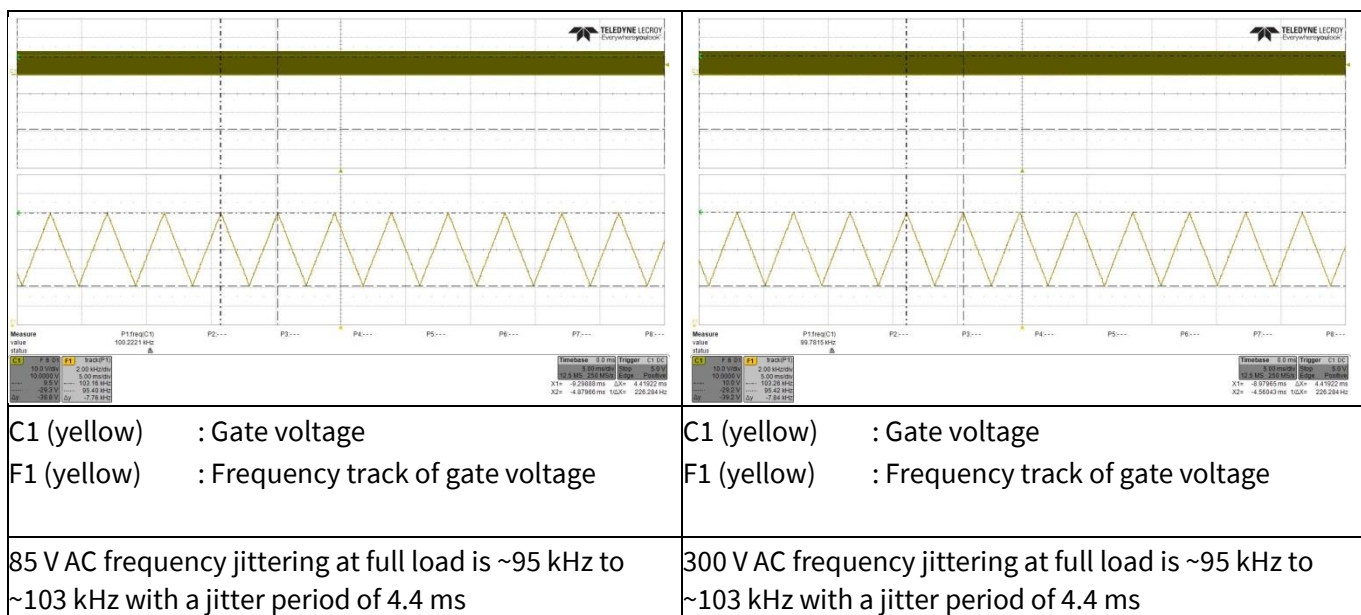


Figure 22 Frequency jittering

Waveforms and oscilloscope plots

11.5 Load transient response (dynamic load from 10% to 100%)

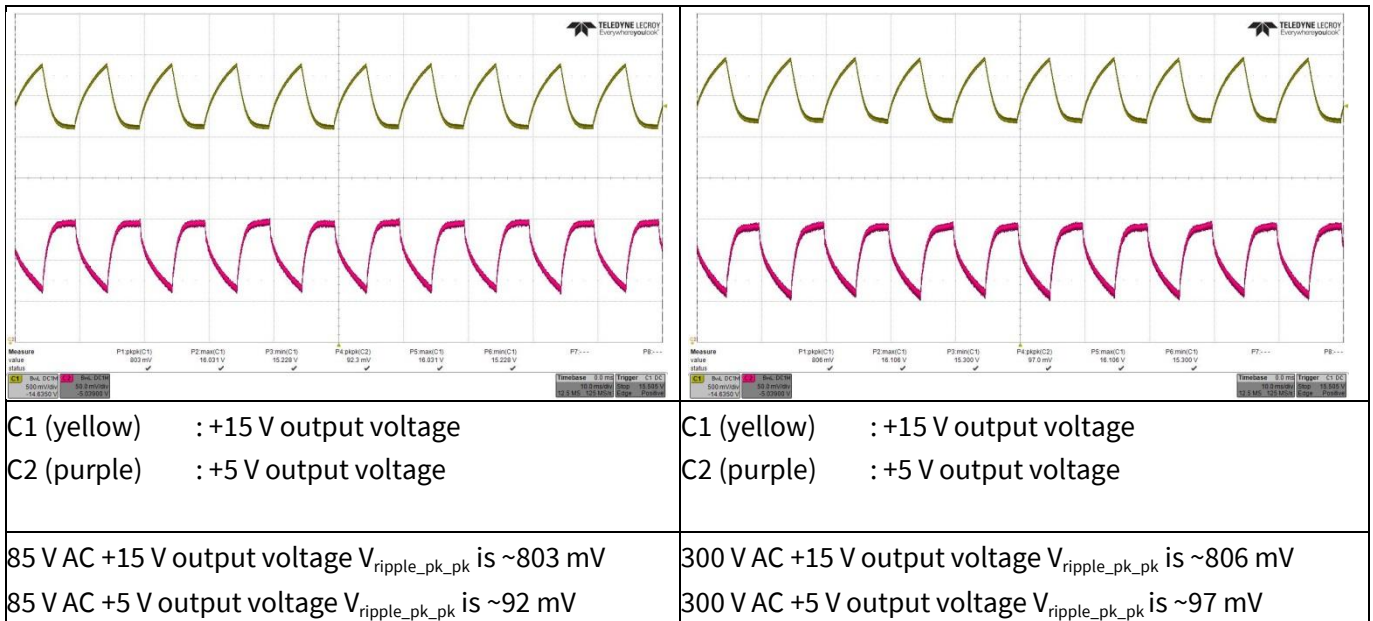


Figure 23 Load transient response with +15 V output load change from 10% to 100% at 0.4 A/μs slew rate, 100 Hz. +5 V output is fixed at 400 mA load. Probe terminals are decoupled with 1 μF electrolytic and 0.1 μF ceramic capacitors. Oscilloscope is BW filter limited to 20 MHz.

11.6 Output ripple voltage at full load

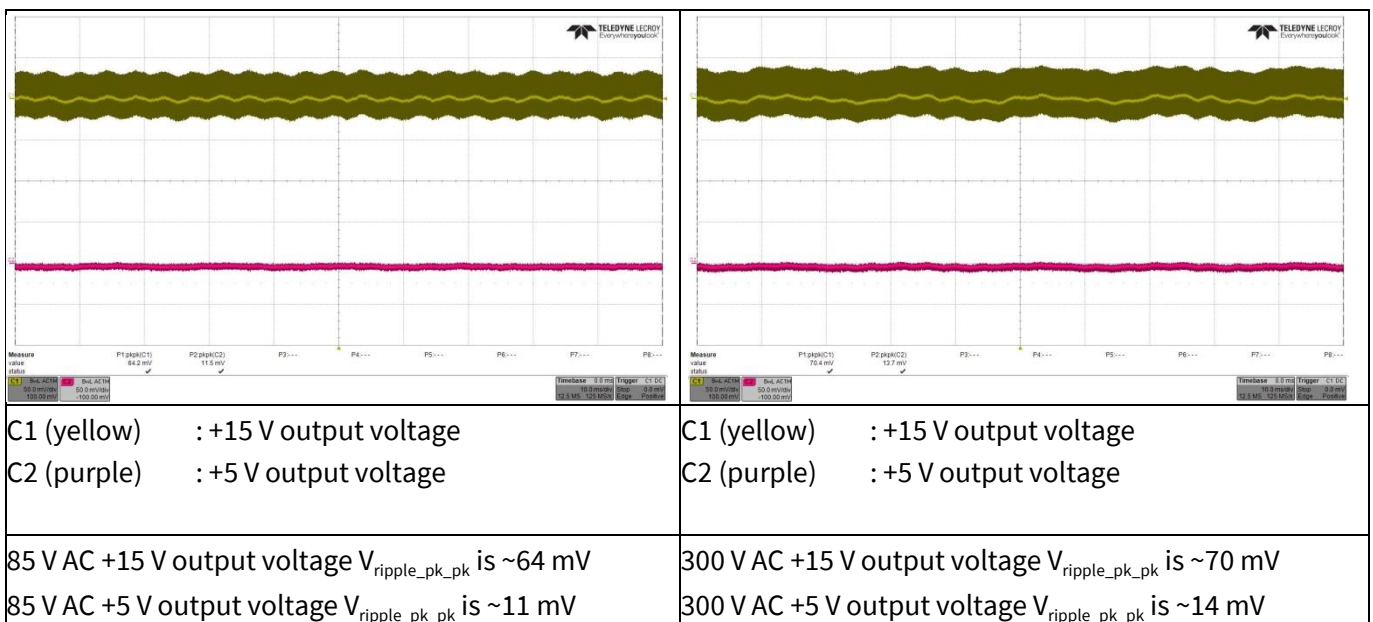


Figure 24 Output ripple voltage at full load. Probe terminals are decoupled with 1 μF electrolytic and 0.1 μF ceramic capacitors. Oscilloscope is BW filter limited to 20 MHz.

Waveforms and oscilloscope plots

11.7 Output ripple voltage at ABM (0.5 W load)

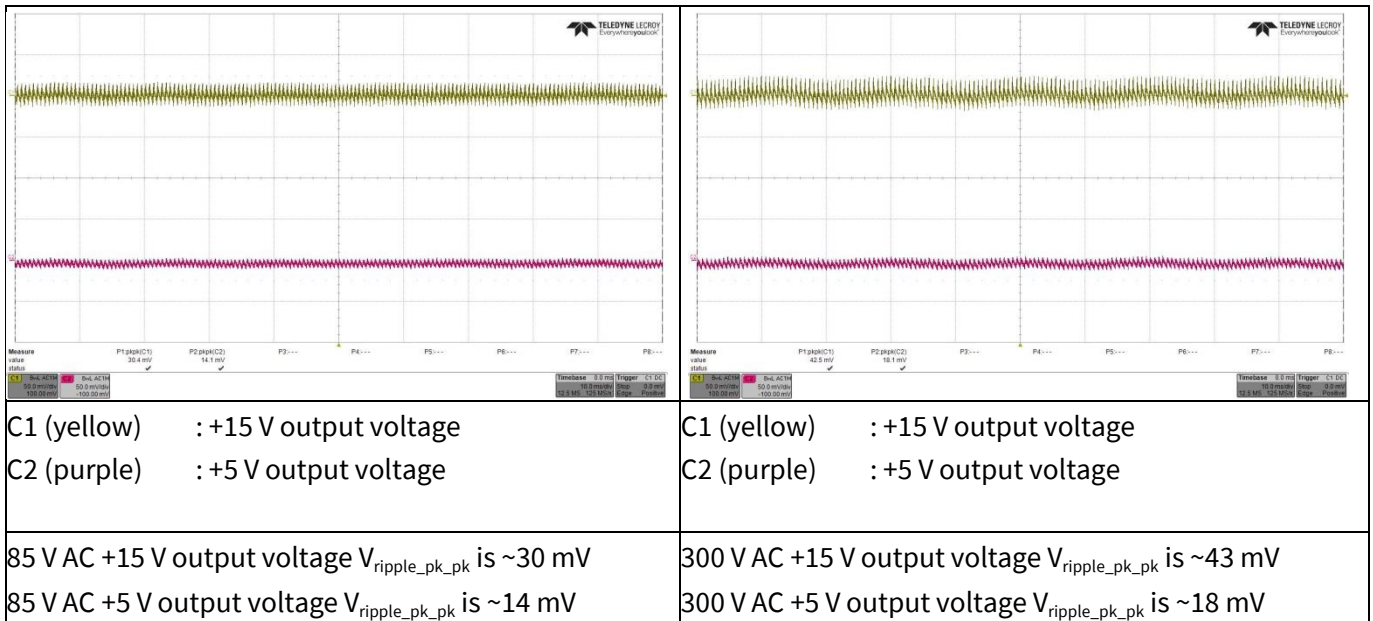


Figure 25 Output ripple voltage at 0.5 W load (+15 V/30 mA, +5 V/12 mA). Probe terminals are decoupled with 1 μ F electrolytic and 0.1 μ F ceramic capacitors. Oscilloscope is BW filter limited to 20 MHz.

11.8 Entering ABM

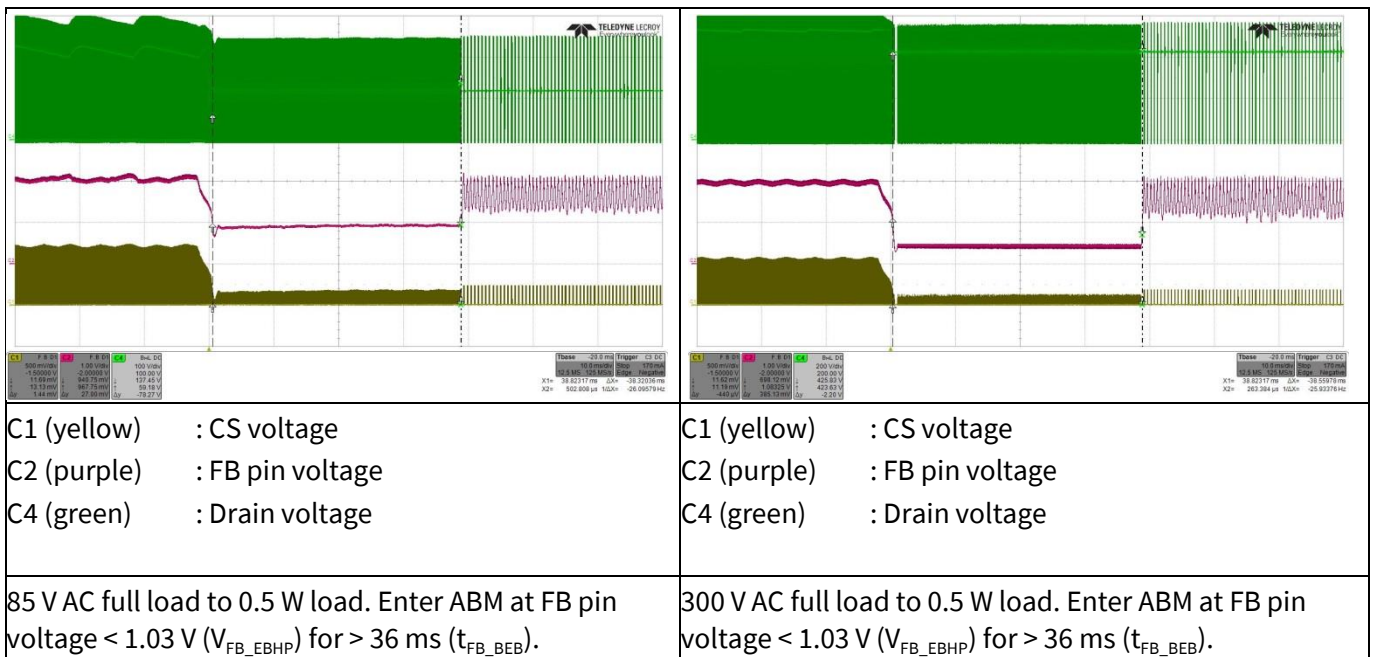


Figure 26 Entering ABM. Output at full load to 0.5 W load (+15 V/30 mA, +5 V/12 mA).

14 W 15 V 5 V SMPS demo board with ICE5AR4770AG

DEMO_5AR4770AG_14W1

Waveforms and oscilloscope plots

11.9 During ABM

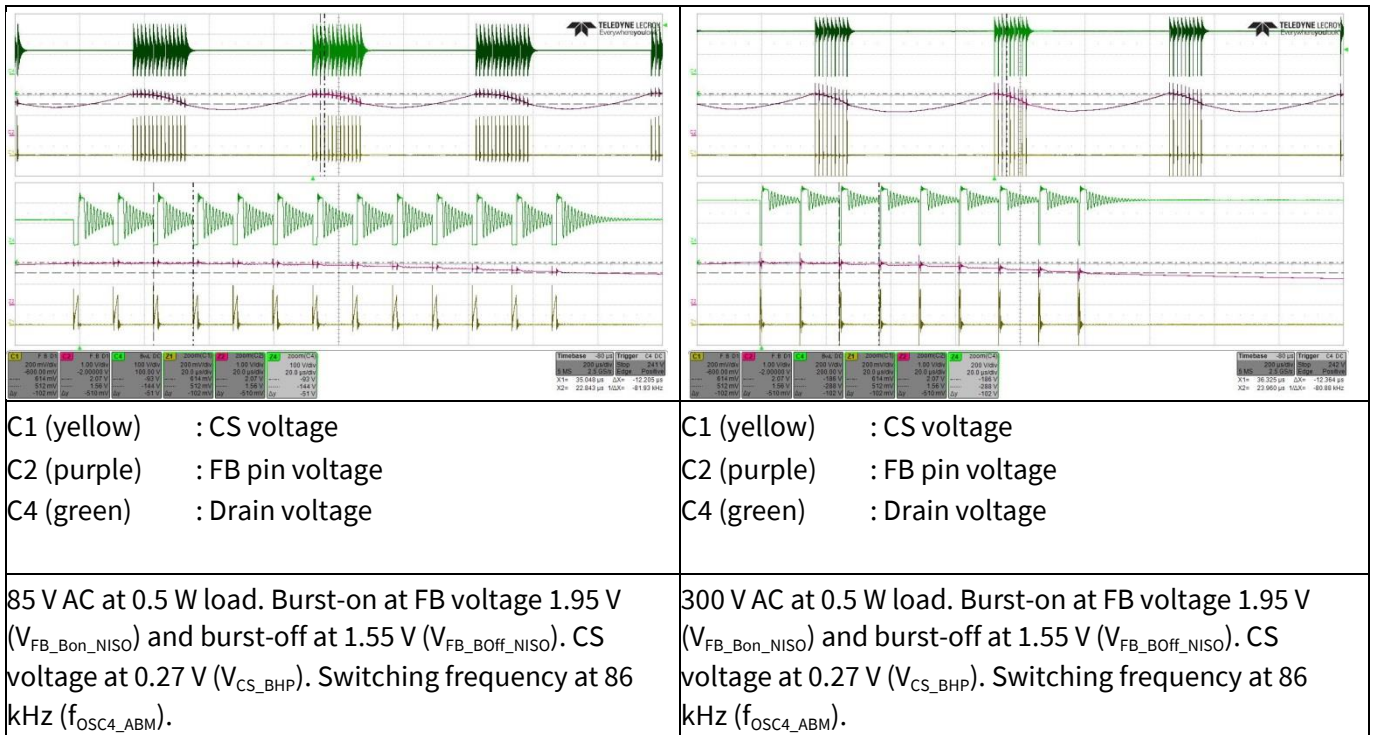


Figure 27 During ABM. Output at 0.5 W load (+15 V/30 mA, +5 V/12 mA).

11.10 Leaving ABM

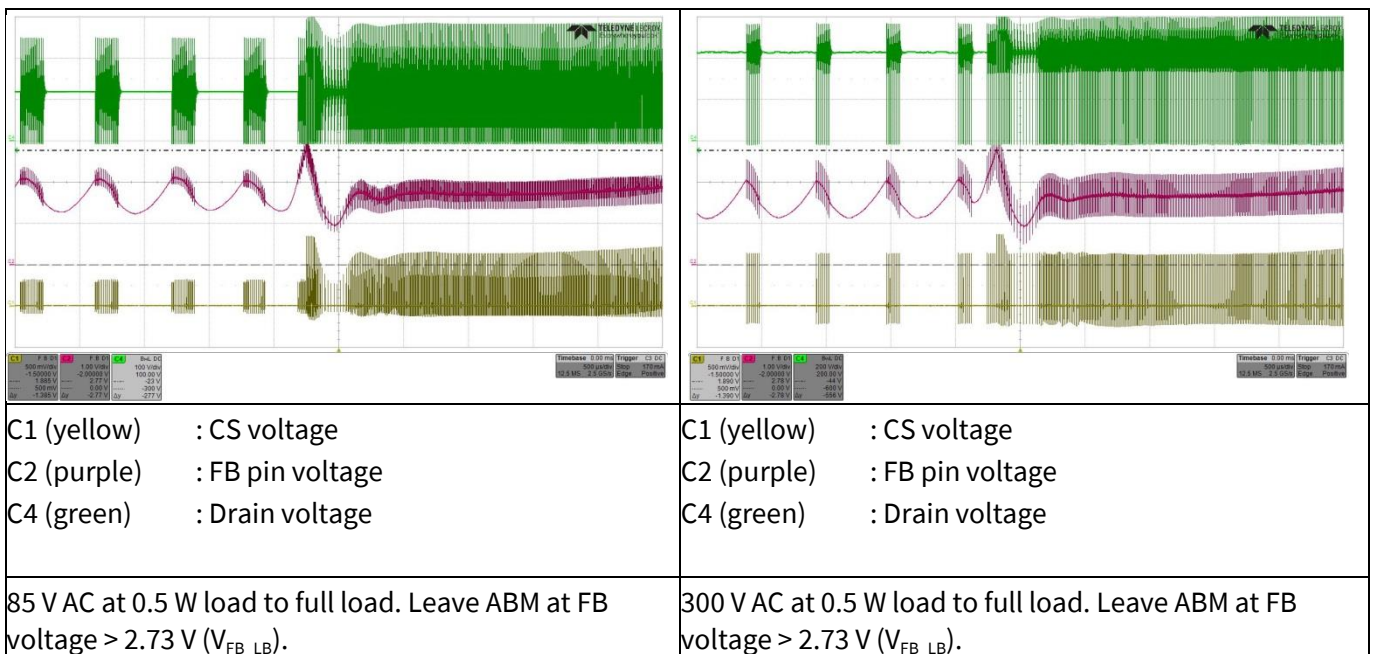


Figure 28 Leaving ABM. Output at 0.5 W load (+15 V/30 mA, +5 V/12 mA) to full load.

Waveforms and oscilloscope plots

11.11 Line OVP (non-switch auto restart)

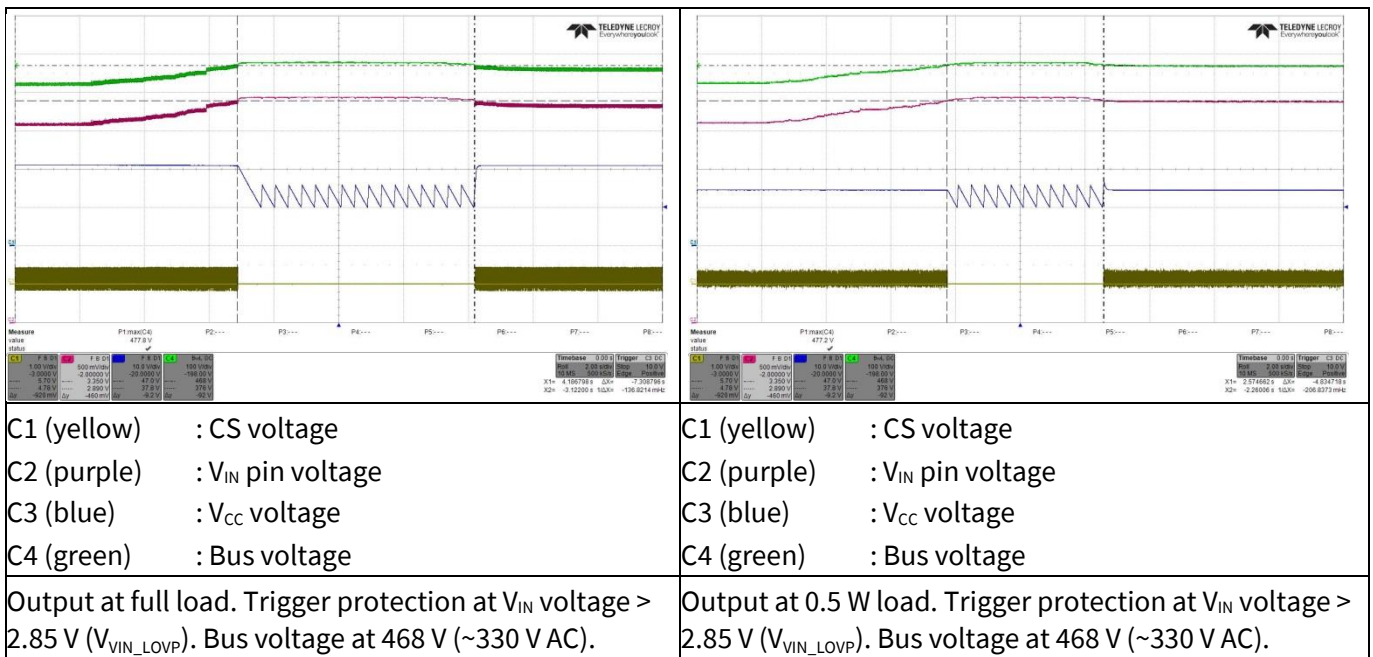


Figure 29 Line OVP. Gradually increase input voltage to trigger protection and gradually reduce input voltage to reset.

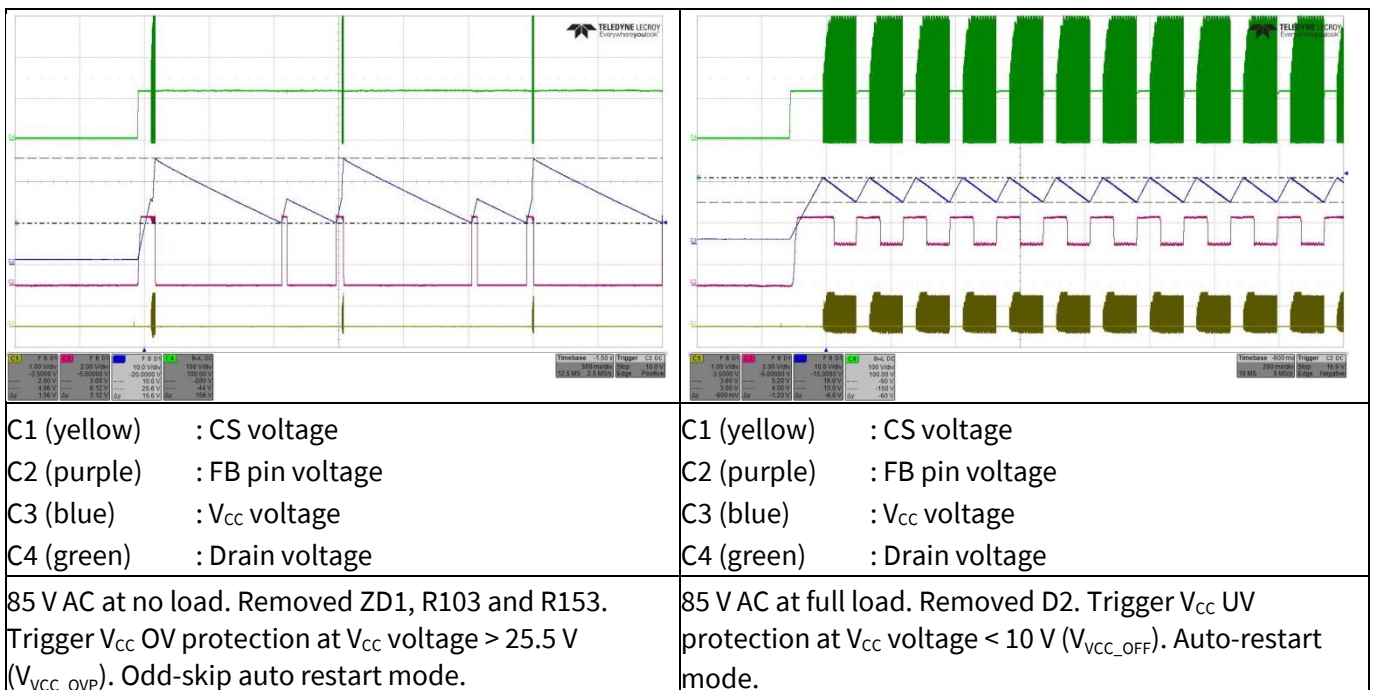
11.12 V_{CC} OV/UV protection

Figure 30 V_{CC} OV/UV protection

Waveforms and oscilloscope plots

11.13 Over-load protection

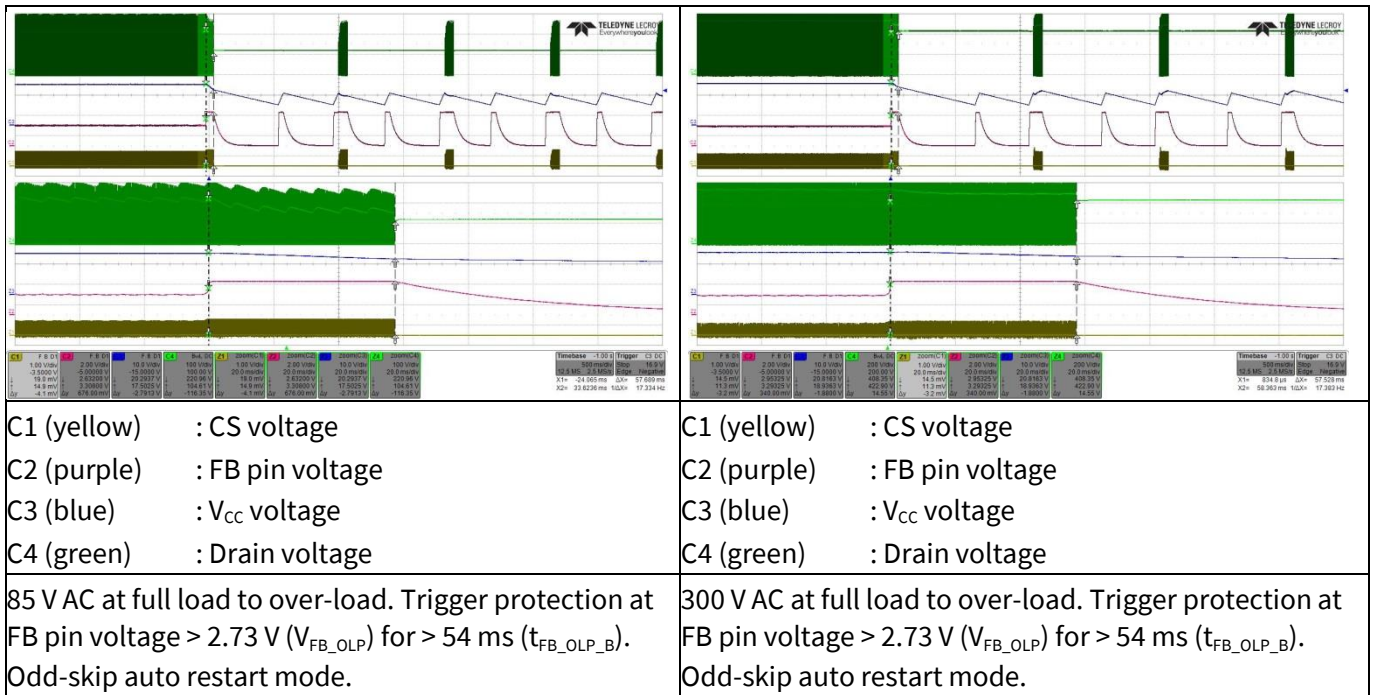
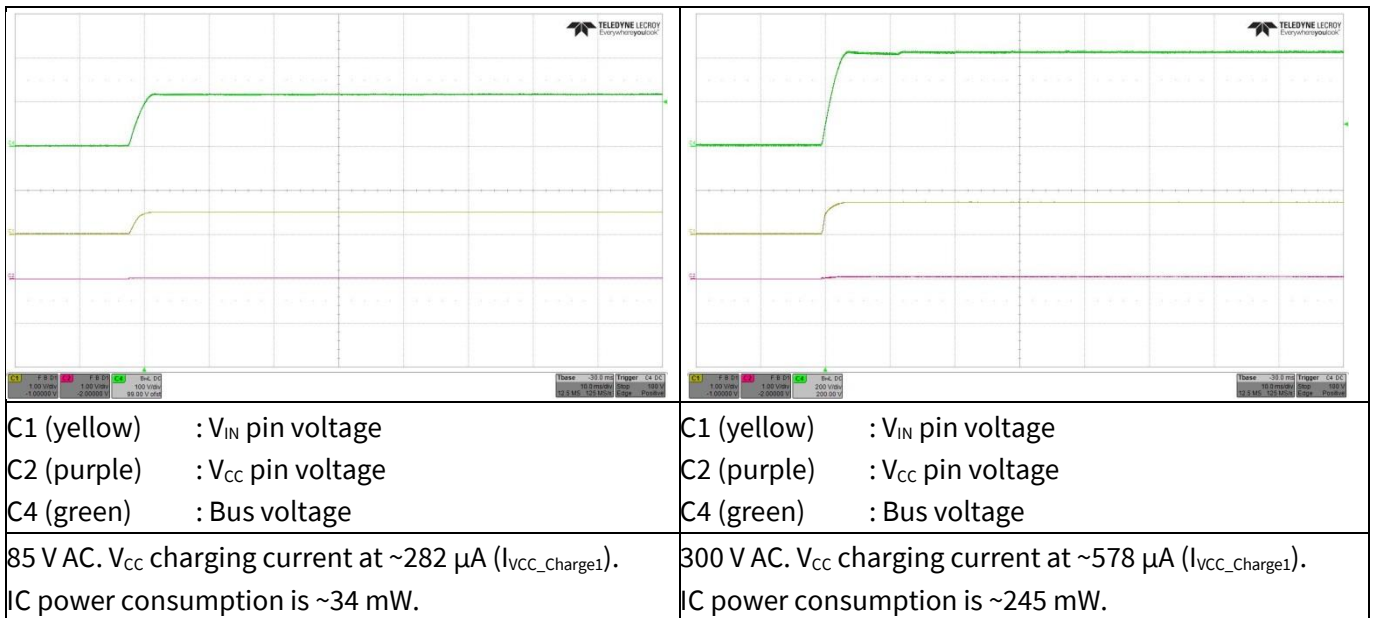


Figure 31 Over-load protection. Load increased at +15 V output to 2 A to trigger protection.

11.14 V_{CC} short-to-GNDFigure 32 V_{CC} short-to-GND. V_{CC} charging current measured with a digital multimeter.

References

12 References

- [1] ICE5xRxxxxAG datasheet, Infineon Technologies AG
- [2] 5th Generation Fixed-Frequency Design Guide
- [3] Calculation Tool Fixed Frequency CoolSET™ Generation 5

Revision history

Major changes since the last revision

| Page or reference | Description of changes |
|-------------------|------------------------|
| -- | First release |
| | |
| | |

Trademarks

All referenced product or service names and trademarks are the property of their respective owners.

Edition 2018-02-20

Published by

Infineon Technologies AG

81726 Munich, Germany

**© 2018 Infineon Technologies AG.
All Rights Reserved.**

Do you have a question about this document?

Email: erratum@infineon.com

**Document reference
ER_201708_PL83_016**

IMPORTANT NOTICE

The information contained in this application note is given as a hint for the implementation of the product only and shall in no event be regarded as a description or warranty of a certain functionality, condition or quality of the product. Before implementation of the product, the recipient of this application note must verify any function and other technical information given herein in the real application. Infineon Technologies hereby disclaims any and all warranties and liabilities of any kind (including without limitation warranties of non-infringement of intellectual property rights of any third party) with respect to any and all information given in this application note.

The data contained in this document is exclusively intended for technically trained staff. It is the responsibility of customer's technical departments to evaluate the suitability of the product for the intended application and the completeness of the product information given in this document with respect to such application.

For further information on the product, technology, delivery terms and conditions and prices please contact your nearest Infineon Technologies office (www.infineon.com).

WARNINGS

Due to technical requirements products may contain dangerous substances. For information on the types in question please contact your nearest Infineon Technologies office.

Except as otherwise explicitly approved by Infineon Technologies in a written document signed by authorized representatives of Infineon Technologies, Infineon Technologies' products may not be used in any applications where a failure of the product or any consequences of the use thereof can reasonably be expected to result in personal injury.