

IP67 SEALED 8 SERIES PANEL ASSEMBLY

FEATURES

- IP67 dust and water protected when submerged 1 m deep for 30 minutes
- Lightweight plastic shell
- Push-pull latching system
- 11.05 mm (.435") DIA panel opening
- Polarizing keys protect from misalignment
- Visual alignment indicators
- Cable-to-cable or cable-to-panel solutions

SPECIFICATIONS

For complete specifications see www.samtec.com?MCR or www.samtec.com?MCP

Insulator Material: PPS

Terminal Material (MCP): Phosphor Bronze

Contact Material: Phosphor Bronze

Operating Temp Range: -20 °C to +80 °C

Gasket Material: Neoprene Rubber (MCR)

Silicone (MCP)

Lock Washer (MCR): Phosphor Bronze, Ni plated

Hex Nut (MCR): Brass, Ni plated

Spring Material (MCP): Stainless Steel

Coupling Ring Spacer (MCP): PBT

Cable Clamp (MCP): POM

RoHS Compliant: Yes

COMPONENTS

- For body, see www.samtec.com?MCRK or www.samtec.com?MCPK

- For contacts, see www.samtec.com?CC393 or www.samtec.com?TC114

DUST CAPS

- -S (Socket) = DCA-MCR-8
- -T (Terminal) = DCA-MCP-8

Visit sealedio.samtec.com for a complete list of sealed systems

ALSO AVAILABLE (MOQ Required)

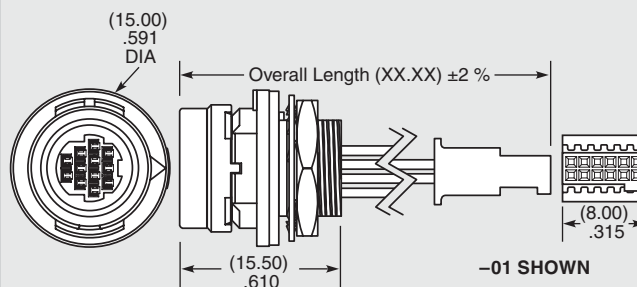
- Other lengths

Note: Samtec's MCR, MCP Series is dual sourced by Hirose Electric Co., LTD.

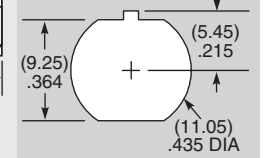
MCR	8	LEAD STYLE	PLATING	LENGTH	END 1 OPTION	END 2 OPTION
Mates with: MCP(K)	-02 = 12 positions, 28 AWG	-L = 10 μ" (0.25 μm) Gold on contact area	-00.25 = 0.25 meter -00.50 = 0.50 meter Standard lengths	-S = Socket	-BC = Blunt Cut (Color wire only, see chart) -01 = 2x6 SFSD (Pin1 to Pin1) (Black wire only)	

APPLICATION

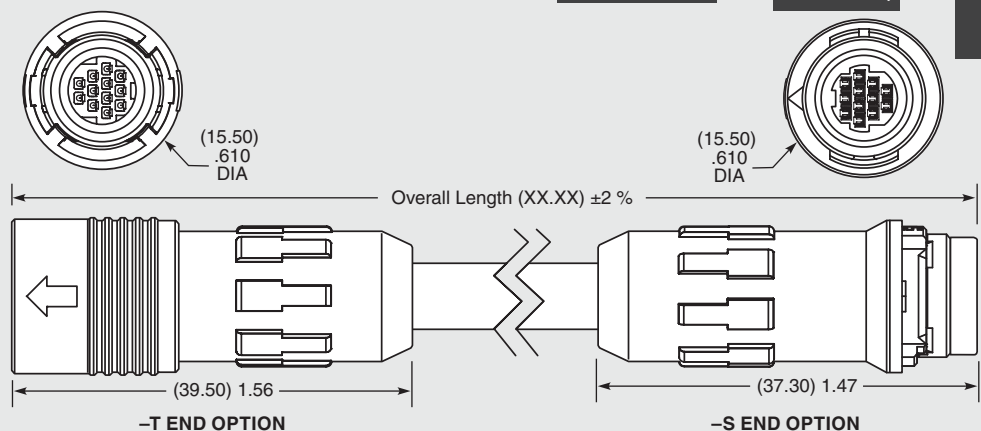
-BC CABLE COLOR CODING	
PIN	COLOR
1	BROWN
2	RED
3	ORANGE
4	YELLOW
5	GREEN
6	DARK BLUE
7	VIOLET
8	GRAY
9	WHITE
10	BLACK
11	GREEN/BLACK
12	TAN



PANEL OPENING



MCP	8	LEAD STYLE	PLATING	LENGTH	END 1 OPTION	END 2 OPTION
Mates with: MCR(K), MCP(K)	-02 = 12 positions, 28 AWG	-L = 10 μ" (0.25 μm) Gold on contact area	-01.00 = 1 meter -02.00 = 2 meters Standard lengths	-T = Terminal -S = Socket (Not available with End 2 -T)	-T = Terminal -S = Socket -BC = Blunt Cut	



Due to technical progress, all designs, specifications and components are subject to change without notice.

WWW.SAMTEC.COM

All parts within this catalog are built to Samtec's specifications.

Customer specific requirements must be approved by Samtec and identified in a Samtec customer-specific drawing to apply.