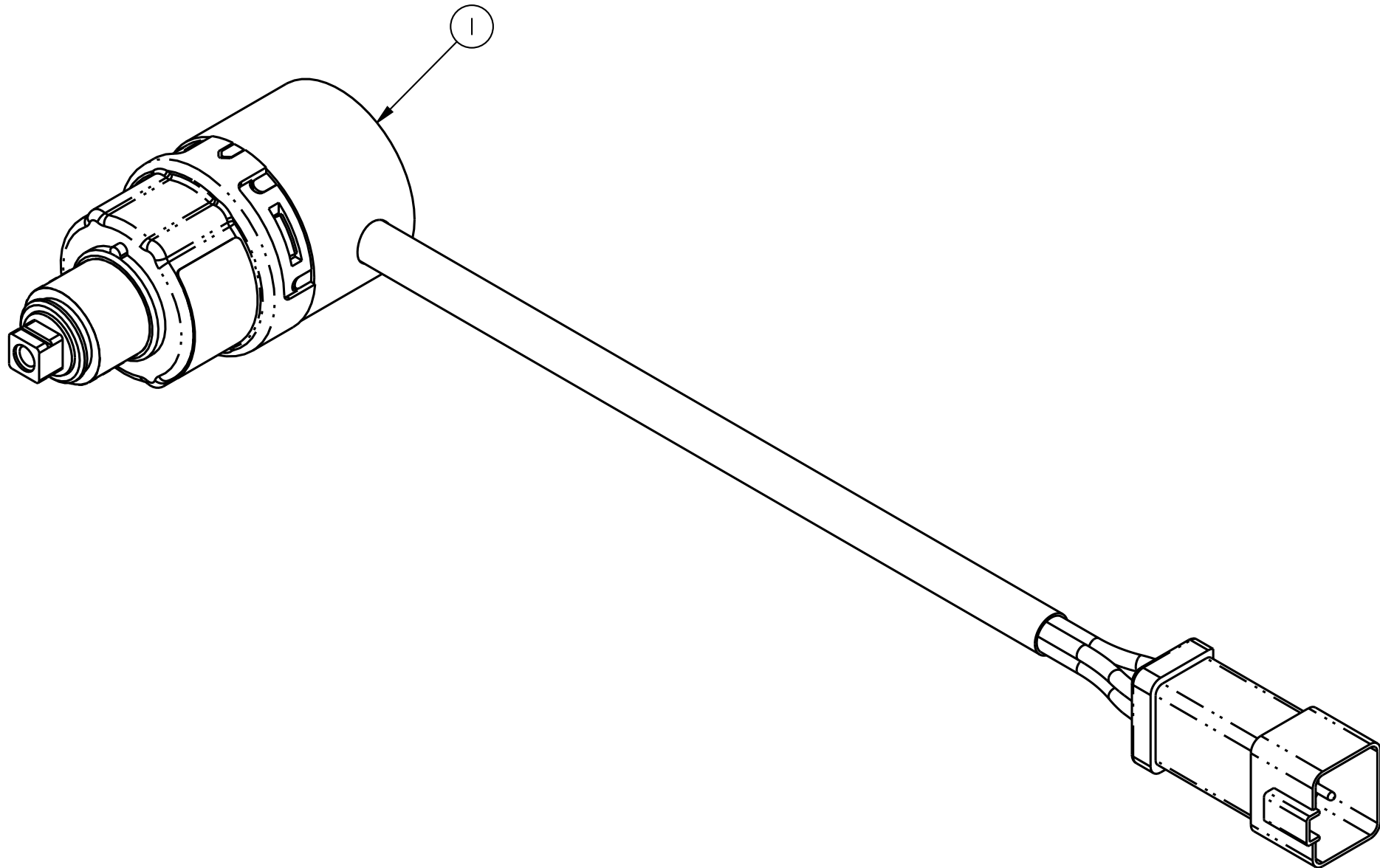
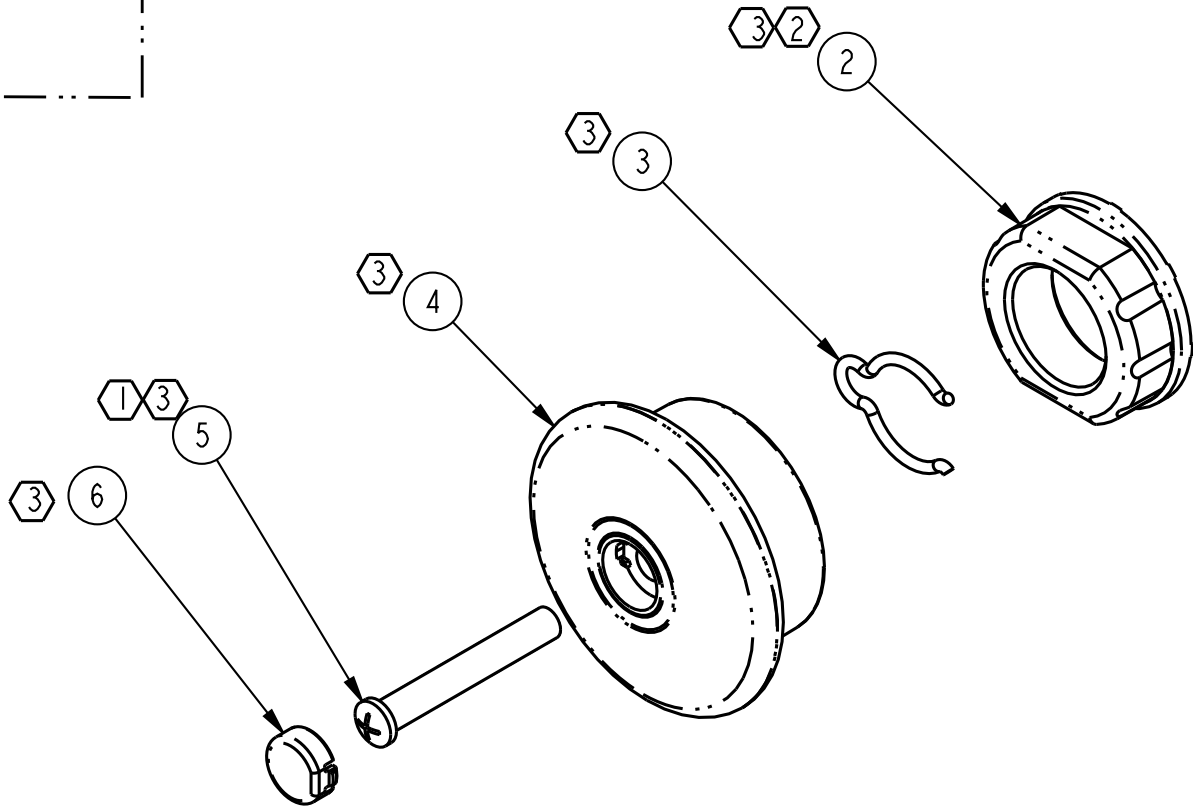
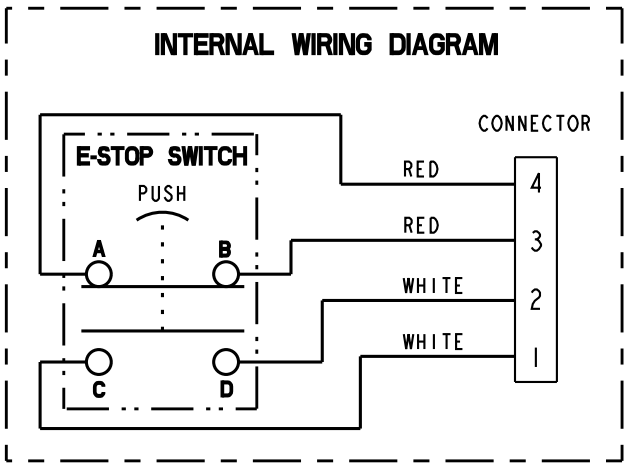
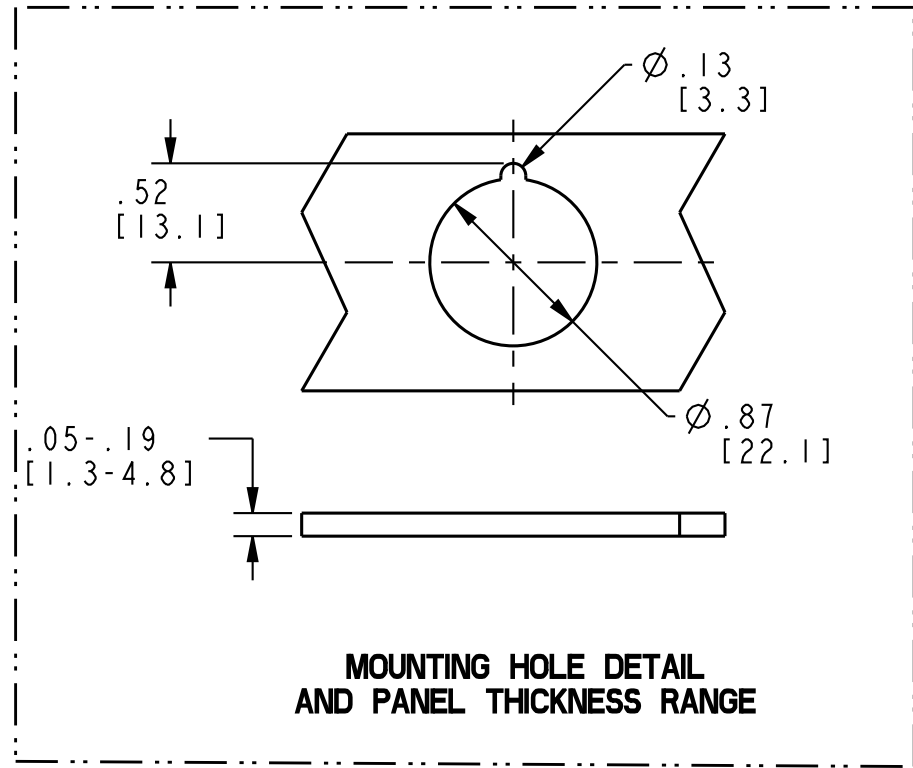
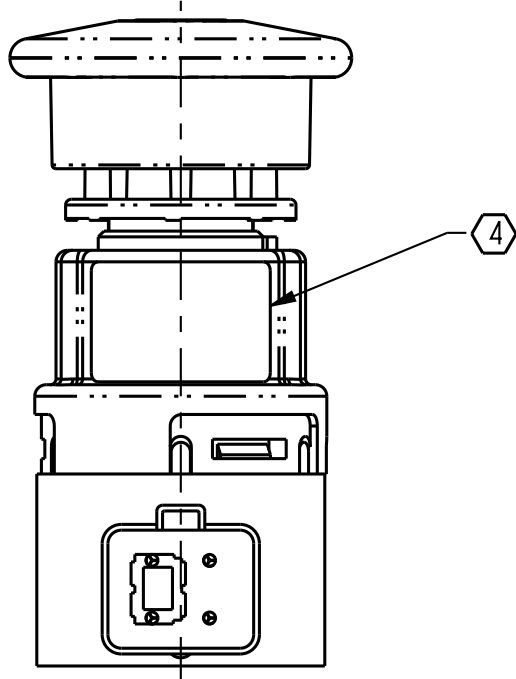
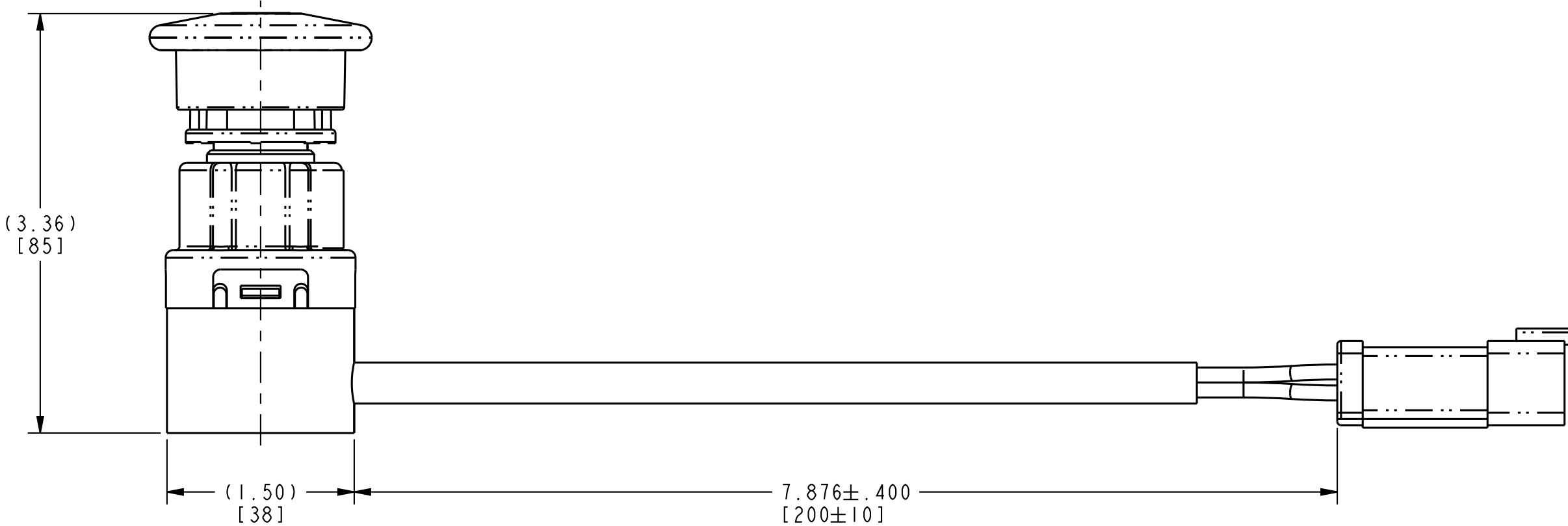


HONEYWELL PART NUMBER
50058830-001

REV	DOCUMENT	CHANGED BY	CHECK
B	0081888	SJK 20SEP11	CMH



NOTES:

- 1 - TORQUE SCREW TO 1.5±0.2 Nm.
- 2 - TORQUE MOUNTING NUT TO 5±0.5 Nm.
- 3 - ITEMS NOT INSTALLED, REFERENCE PACK INCLUDED SEPARATE.
- 4 - LABEL TO CONTAIN: CUSTOMER PART NUMBER, CHANGE LEVEL, SCHEMATIC, HONEYWELL NAME, DATE OF MANUFACTURING AND PLACE OF MANUFACTURING "MEXICO".

DESIGN UNITS: INCH[MM]	DRAWN	DJS	04MAY11
TOLERANCES UNLESS NOTED:	CHECK	LK	04MAY11
NO PLACES X ± .040	THIS DRAWING COVERS A PROPRIETARY ITEM AND IS THE PROPERTY OF HONEYWELL. THIS DRAWING IS NOT TO BE COPIED OR USED WITHOUT THE PERMISSION OF HONEYWELL.		
ONE PLACE .X ± .030			
TWO PLACE .XX ± .010			
THREE PLACE .XXX ± .005			
ANGLES X ± 2°			
THIRD ANGLE PROJECTION	INTERPRET PER ASME Y14.5M-1994 OTHER HONEYWELL ENGINEERING STANDARDS MAY APPLY		
	Pro/ENGINEER 3D		

THIS DRAWING COVERS A PROPRIETARY ITEM AND IS THE PROPERTY OF HONEYWELL. THIS DRAWING IS NOT TO BE COPIED OR USED WITHOUT THE PERMISSION OF HONEYWELL.	INTERPRET PER ASME Y14.5M-1994 OTHER HONEYWELL ENGINEERING STANDARDS MAY APPLY		
SIZE	TYPE	CAGE CODE	DRAWING NAME
C	I		50058830
SCALE	1:1		

Honeywell			
TITLE SWITCH ASSEMBLY, PUSH/PULL			
REV	B		
SHEET	1	OF	1

CUSTOMER PRINT