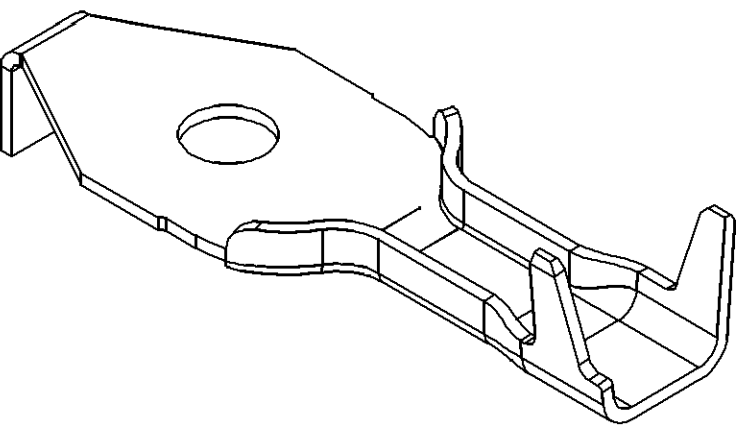
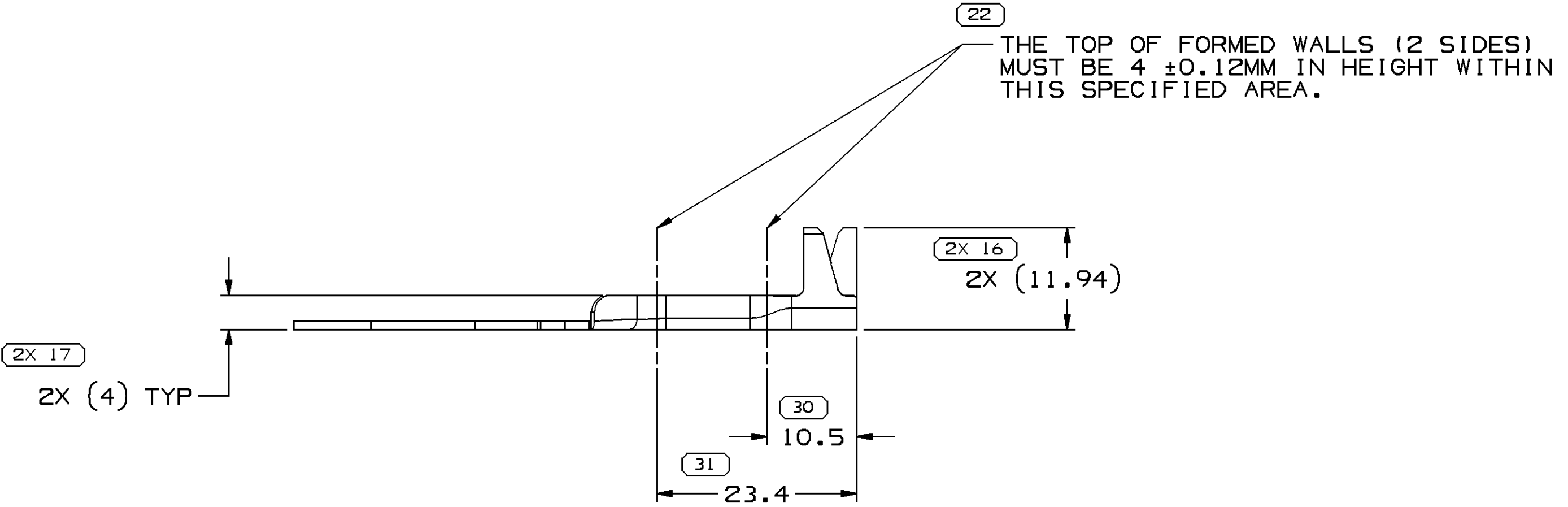
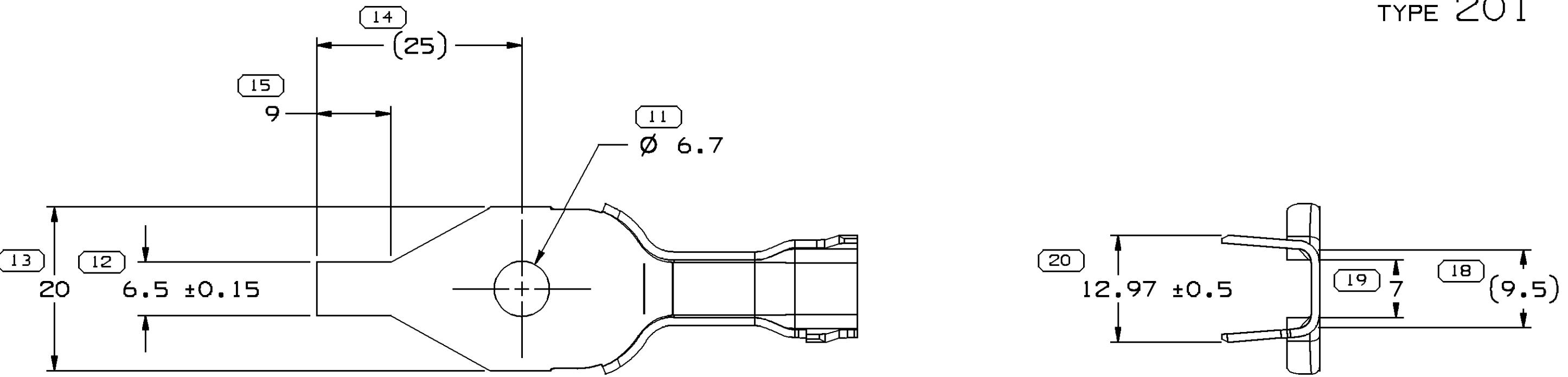


SYMBOL DEFINITION		MISSING SYMBOLS	
A DIMENSION WITHOUT AN INSPECTION REPORT SYMBOL DOES NOT REQUIRE INSPECTION. IT MAY BE CONTROLLED ON THE INDIVIDUAL COMPONENT DRAWING.	TOTAL NO OF INSPECTIONS REQUIRED	NO MISSING SYMBOL NUMBER	
	LAST NO. USED		
	34		
	31		



TYPE 201



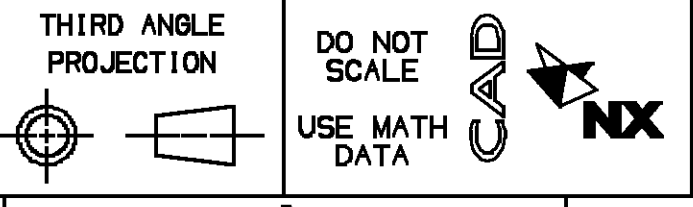
TYPE 201

NOTES

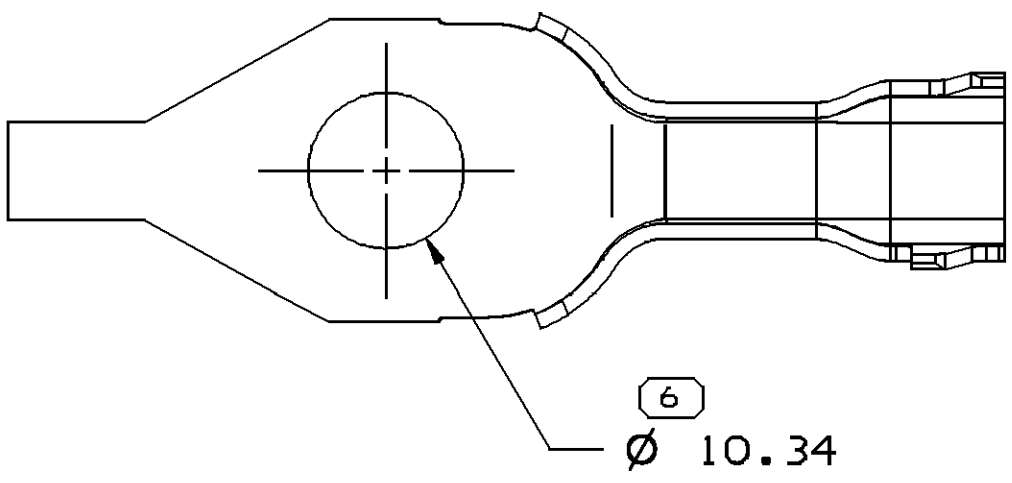
- UNLESS OTHERWISE SPECIFIED AND/OR INDICATED: DIMENSIONS ARE TO FACE OF VIEW SHOWN AND AUTOMATICALLY ROUNDED BY COMPUTER FOR INSPECTION (SEE MATH MODEL FOR PRECISE DIMENSIONS). FOR ALL OTHER DIMENSIONS NOT SHOWN BUT REQUIRED FOR TOOL BUILD, SEE MATH MODEL FOR PRECISE TOOL PATH DATA.
- TERMINAL MUST BE MADE USING FIN-LUBE 0177 STAMPING LUBE OIL. ANY OTHER LUBRICANT MUST BE APPROVED BY PRODUCT ENGINEERING.
- TERMINALS ARE TO BE SINGULATED FROM CARRIER AND PLACED IN CLEAN PLASTIC BAGS PRIOR TO STORAGE AND SHIPMENT.
- PRE-PLATED SELECTIVE MATTE TIN (99.9%) AS DIMENSIONED.

13532333	01	AF	-	-	-	TIN PLATED COPPER ALLOY	210	NO	6.5-13.5	1-12	-
15496902	01	AE	-	-	-	COPPER ALLOY	209	NO	6.5-13.5	1-12	-
15496903	01	AE	-	-	-	COPPER ALLOY	208	NO	6.5-13.5	1-12	-
15498973	01	AE	-	-	-	COPPER ALLOY	207	NO	6.5-13.5	1-12	-
15485963	01	AJ	-	-	-	COPPER ALLOY	206	NO	6.5-13.5	1-12	-
15485961	01	AJ	-	-	-	COPPER ALLOY	205	YES	6.5-13.5	1-12	-
15485959	01	AJ	-	-	-	COPPER ALLOY	204	NO	6.5-13.5	1-12	-
15476582	02	AE	-	-	-	COPPER ALLOY	203	YES	6.5-13.5	1-12	-
15482713	02	AE	-	-	-	COPPER ALLOY	202	YES	6.5-13.5	1-12	-
15482715	02	AE	-	-	-	COPPER ALLOY	201	YES	6.5-13.5	1-12	-
PART NO	REV	N/P	STATUS	RESTRICTED USAGE	MATERIAL SPECIFICATION	TYPE	ANTI-ROTATION	BUNDLE SIZE MM ²	NO. OF WIRES (MIN-MAX)	REPLACED BY	

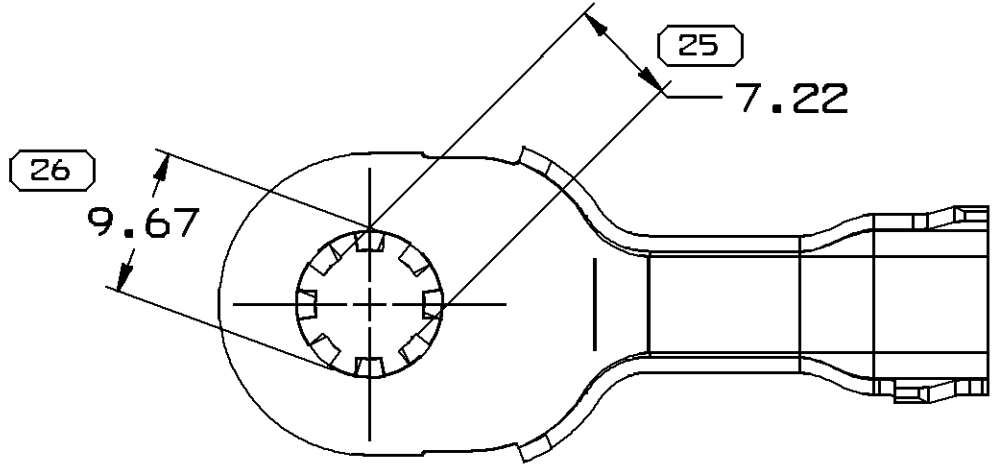
PROCESS SENSITIVE DIMENSION	
DIMENSIONS ENCLOSED IN () INDICATE REFERENCE DIMENSIONS AND NO TOLERANCE LIMITS ARE ESTABLISHED	
DIMENSIONAL RANGE (MM)	CHART C2
FROM 0 TO 12	> 12
TOLERANCE UNLESS OTHERWISE SPECIFIED	
±0.1	±0.2
ANGULAR TOLERANCE ±2°	



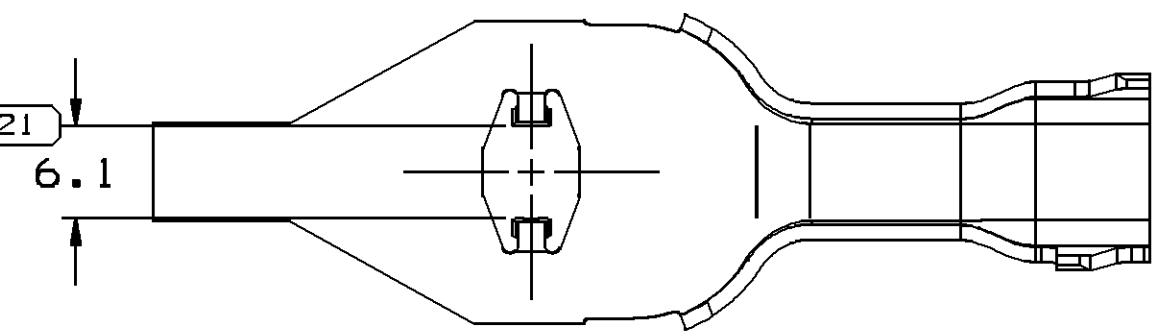
DELPHI	
DELPHI PACKARD ELECTRICAL/ELECTRONIC ARCHITECTURE WARREN, OH	
DATE	
DR	
APV01 J. BANKSTON	01DE03
APV02 J. BANKSTON	01DE03
APV03 R. PUHL	02DE03
APV04	
SUBSTANCES OF CONCERN AND RECYCLED CONTENT, PER DELPHI (924990)	
MATERIAL SEE CHART	
DRAWING NUMBER	
TAXI TERM RING SONIC	
DRAWING NUMBER	
15485965	
SIZE A0	SCALE 2:1
FRAME NO 1	SHEET NO 2 OF 1
STG REV 15	N/P



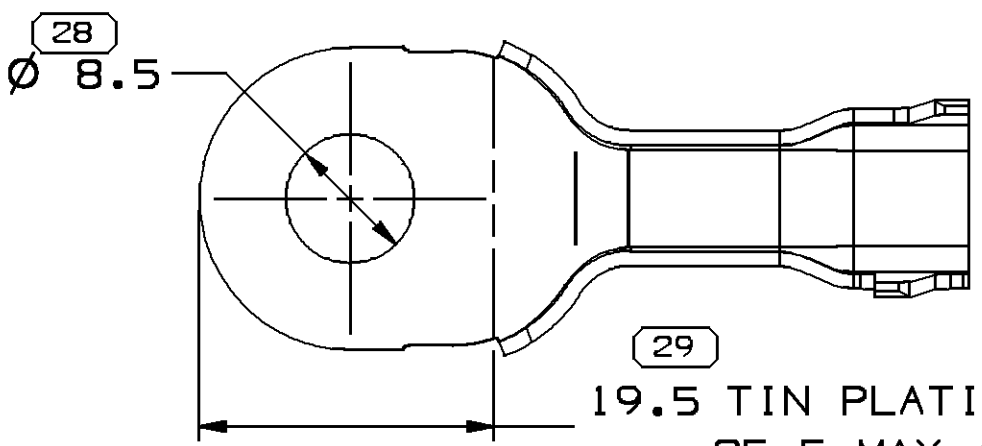
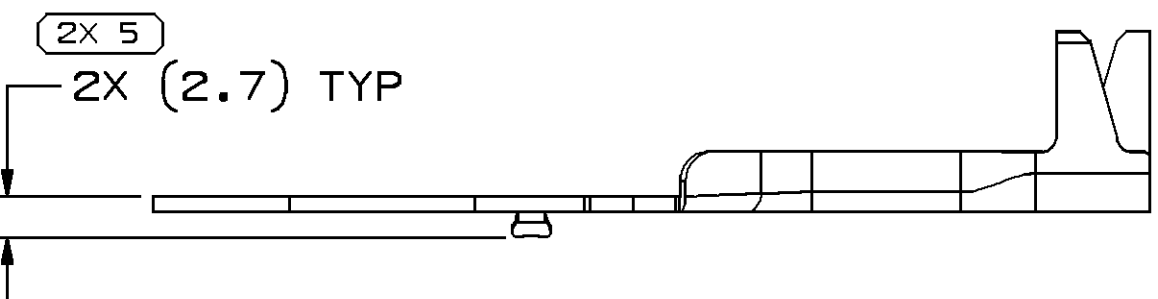
TYPE 202
SAME AS TYPE 201
EXCEPT AS SHOWN



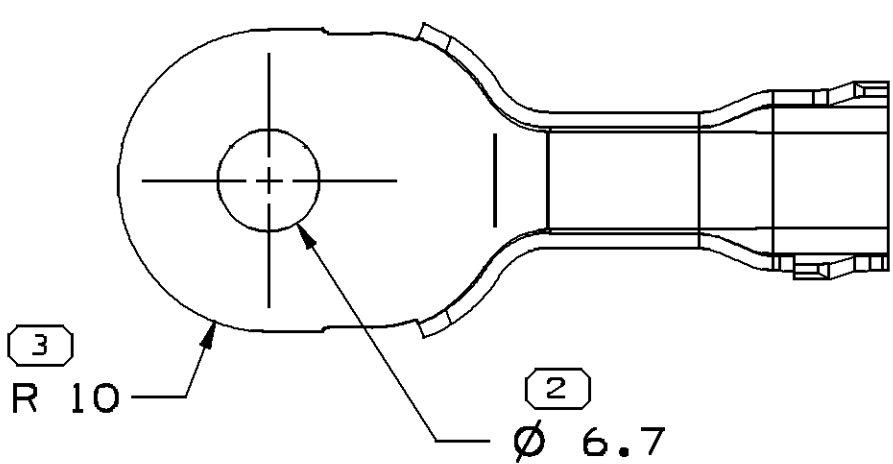
TYPE 209
SAME AS TYPE 204
EXCEPT AS SHOWN



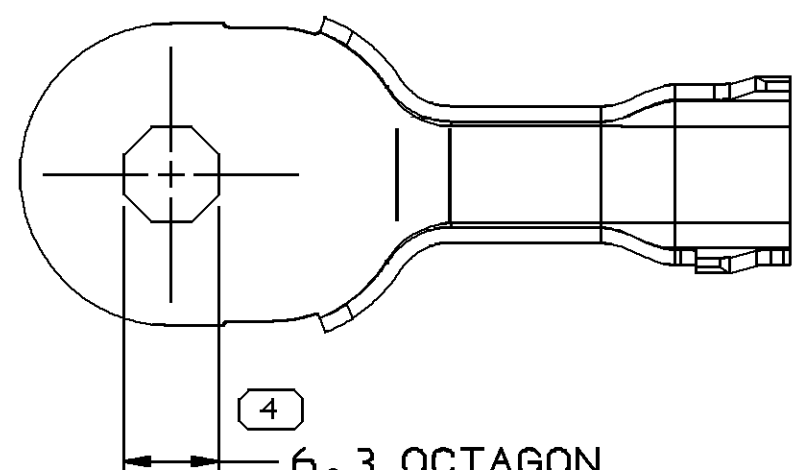
TYPE 203
SAME AS TYPE 201
EXCEPT AS SHOWN



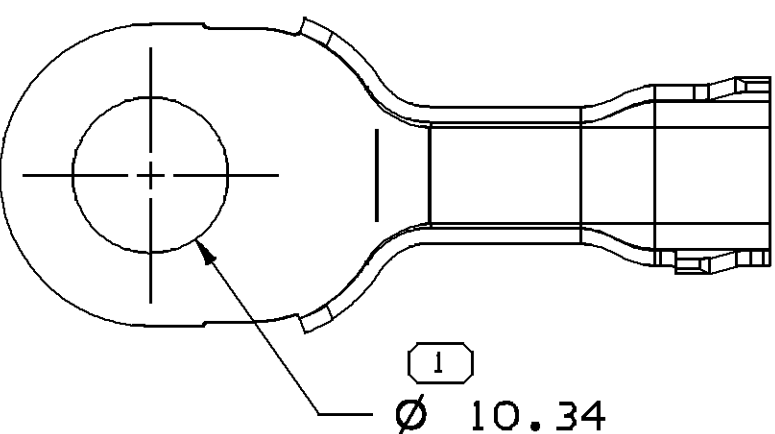
TYPE 210
SAME AS TYPE 204
EXCEPT AS SHOWN



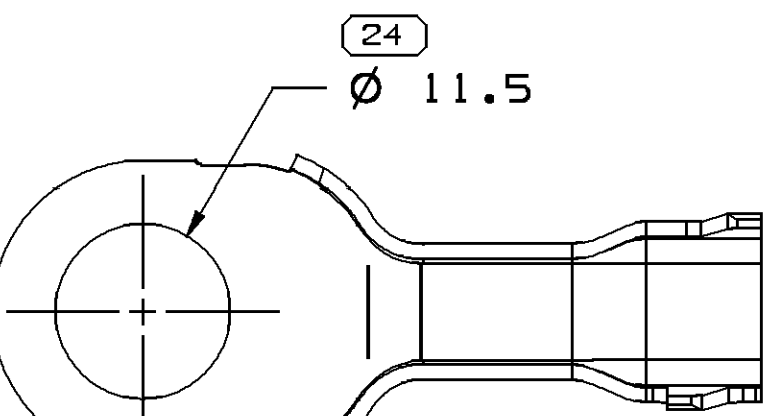
TYPE 204
SAME AS TYPE 201
EXCEPT AS SHOWN



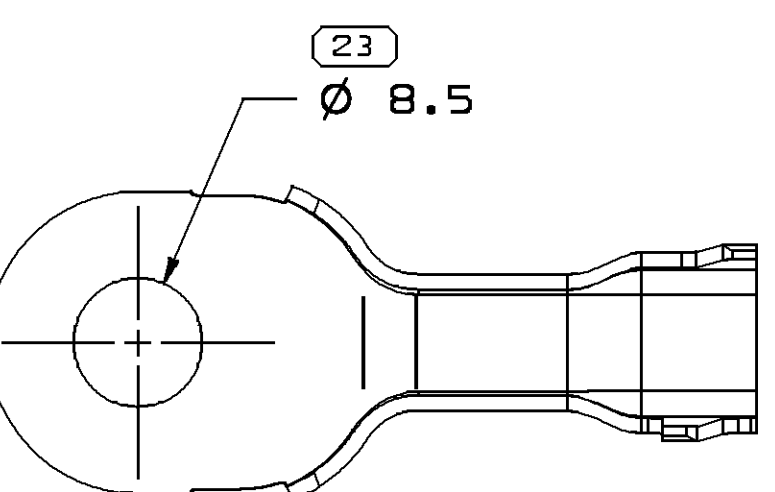
TYPE 205
SAME AS TYPE 204
EXCEPT AS SHOWN



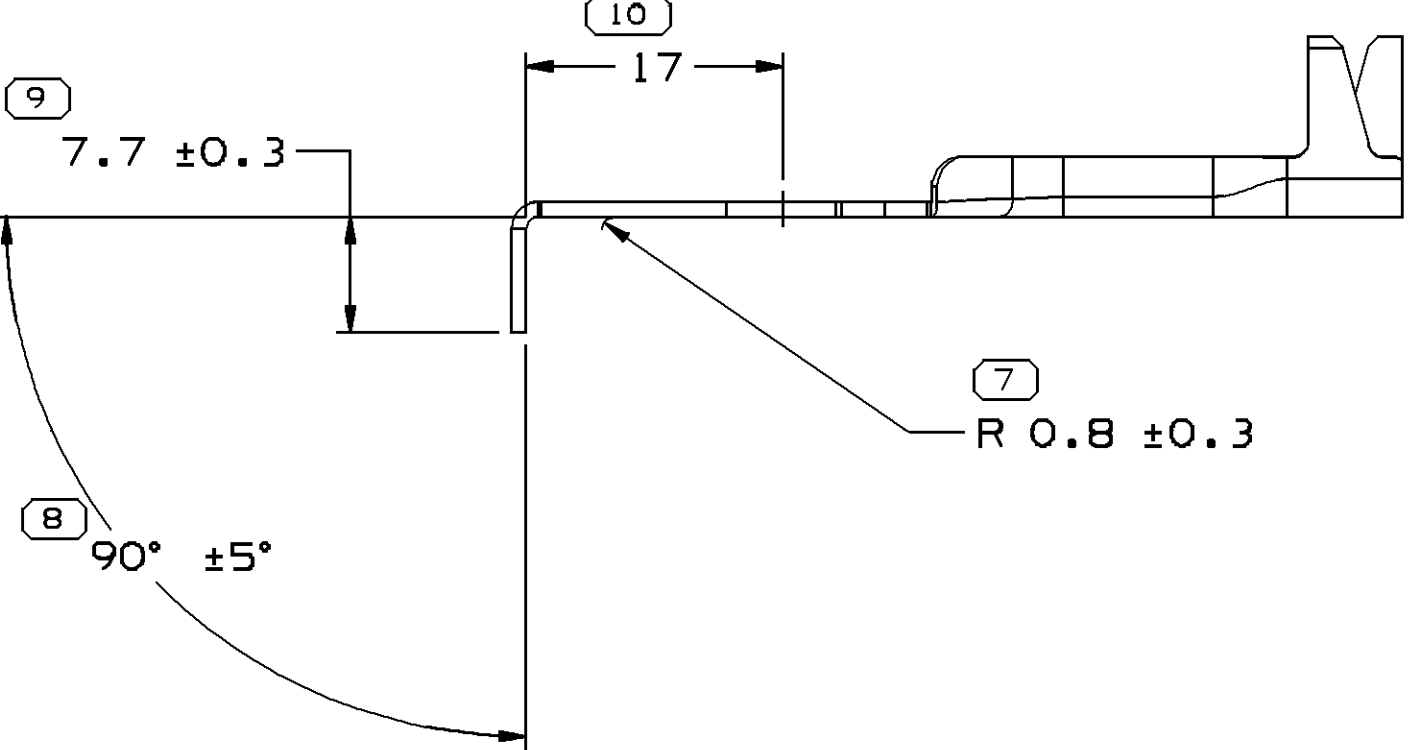
TYPE 206
SAME AS TYPE 204
EXCEPT AS SHOWN



TYPE 207
SAME AS TYPE 204
EXCEPT AS SHOWN



TYPE 208
SAME AS TYPE 204
EXCEPT AS SHOWN



TYPE 201, 202, 203