

DETAILS

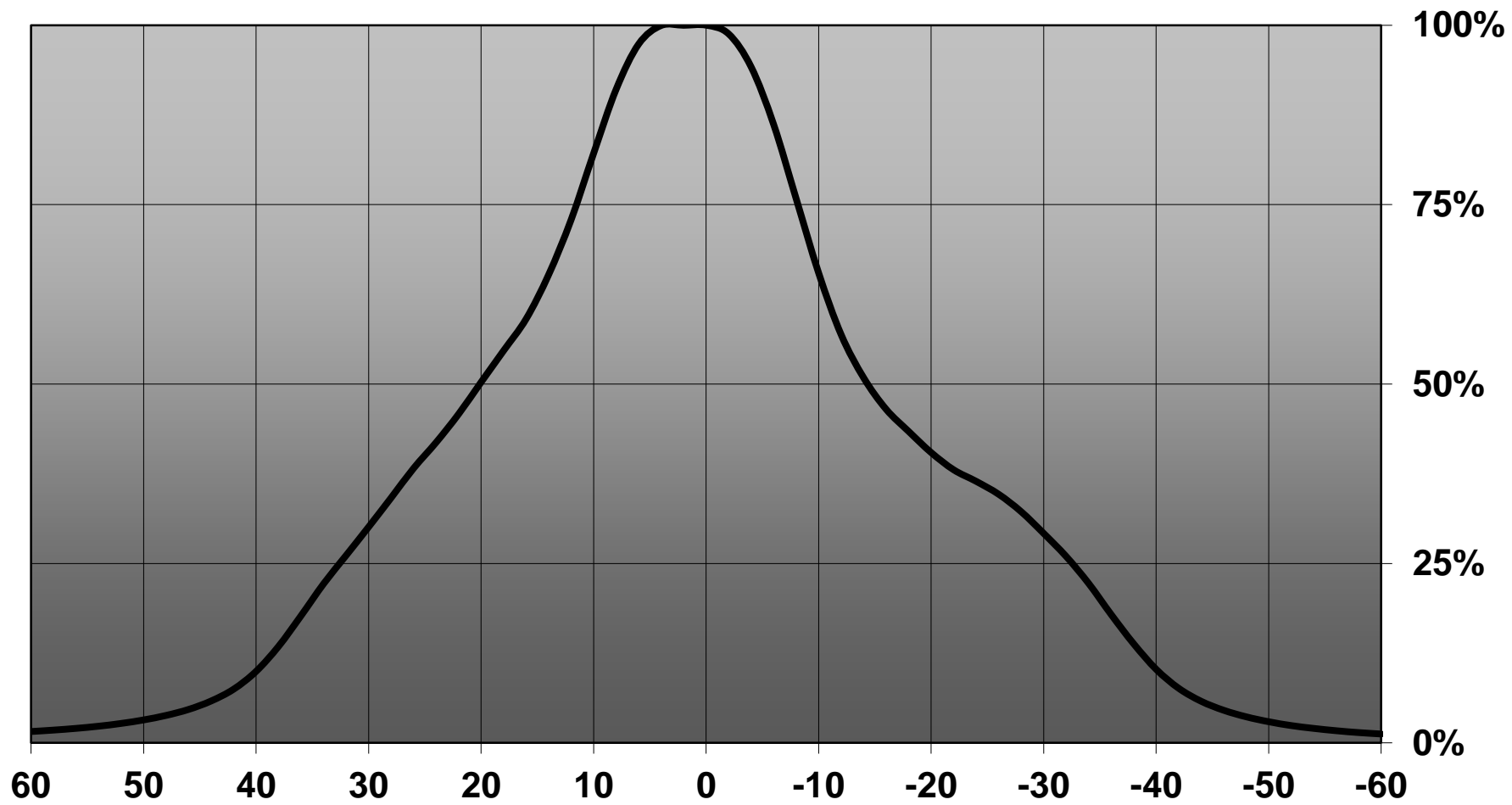
Product Number	FA11027_TINA-WW
Family	Tina
Type	Assembly
Color	black
Diameter	16,1 mm
Height	9,5 mm
Style	round
Optic Material	PMMA
Holder Material	PC
Fastening	pin, tape
Status	ready
ROHS Compliant	Yes
Date Updated	9/12/2014



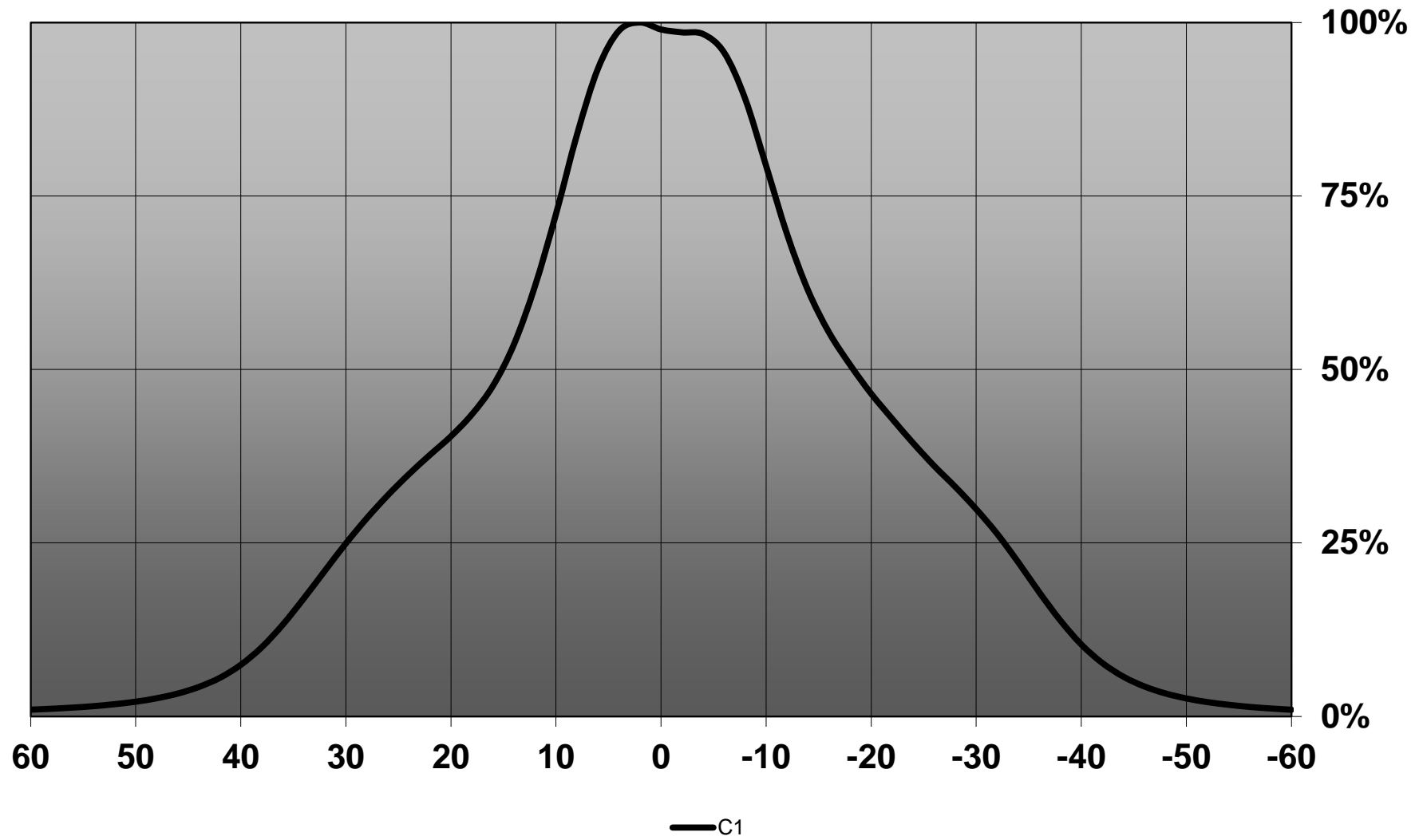
OPTICAL PROPERTIES

LED	Viewing	Light	Effi-		Connector
	Angle	Beam	ciency	cd/lm	
NVSxx19B/NVSxx19C	sim: 50	Very Wide	sim: 89 %	sim: 1.100	-
SFH4725s (IR)	35 deg	Very Wide	-	sim: 0.000	-
SFH 4715S (IR)	36 deg	Very Wide	-	sim: 0.000	-
Oslon SSL 80	66 deg	Very Wide	87 %	0.800	-

Relative intensity of FA11027_TINA-WW_(SFH4725S)



Relative intensity of FA11027_TINA-WW_SFH4715S



D

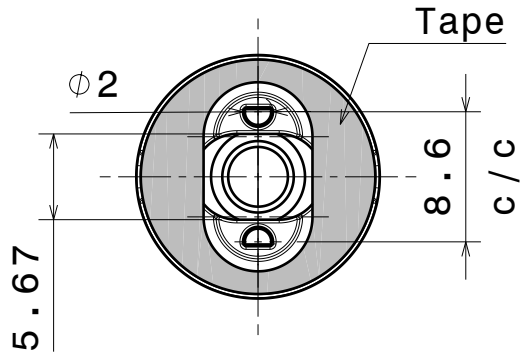
C

B

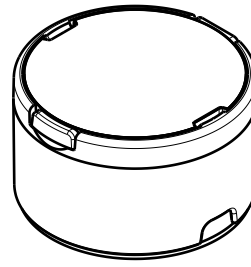
A

4

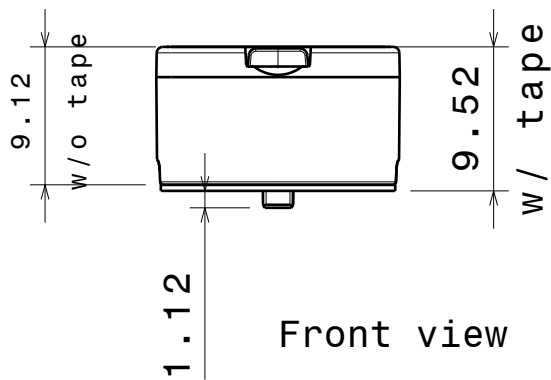
4



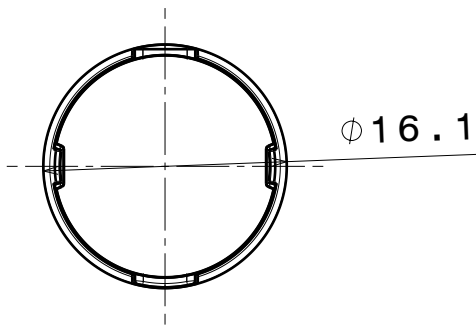
Bottom view



Isometric view



Front view



Top view

Materials
 Lens: PMMA
 Holder: PC
 Tape: PU Foam

3

3

2

2

1

1

This drawing is our property.
 It can't be reproduced
 or communicated without
 our written agreement.



Ledil Oy
 Salorankatu 10
 FIN 24240 SALO
 Finland

DRAWING TITLE Mechanical Drawing

DRAWN BY
 as

DATE
 10.9.2012

TINA-OSL

CHECKED BY
 sn

DATE
 -

SIZE
 A4

PART NUMBER
 TINA-OSL

REV
 001

DESIGNED BY
 -

DATE
 -

SCALE 2:1

WEIGHT 1,47 g

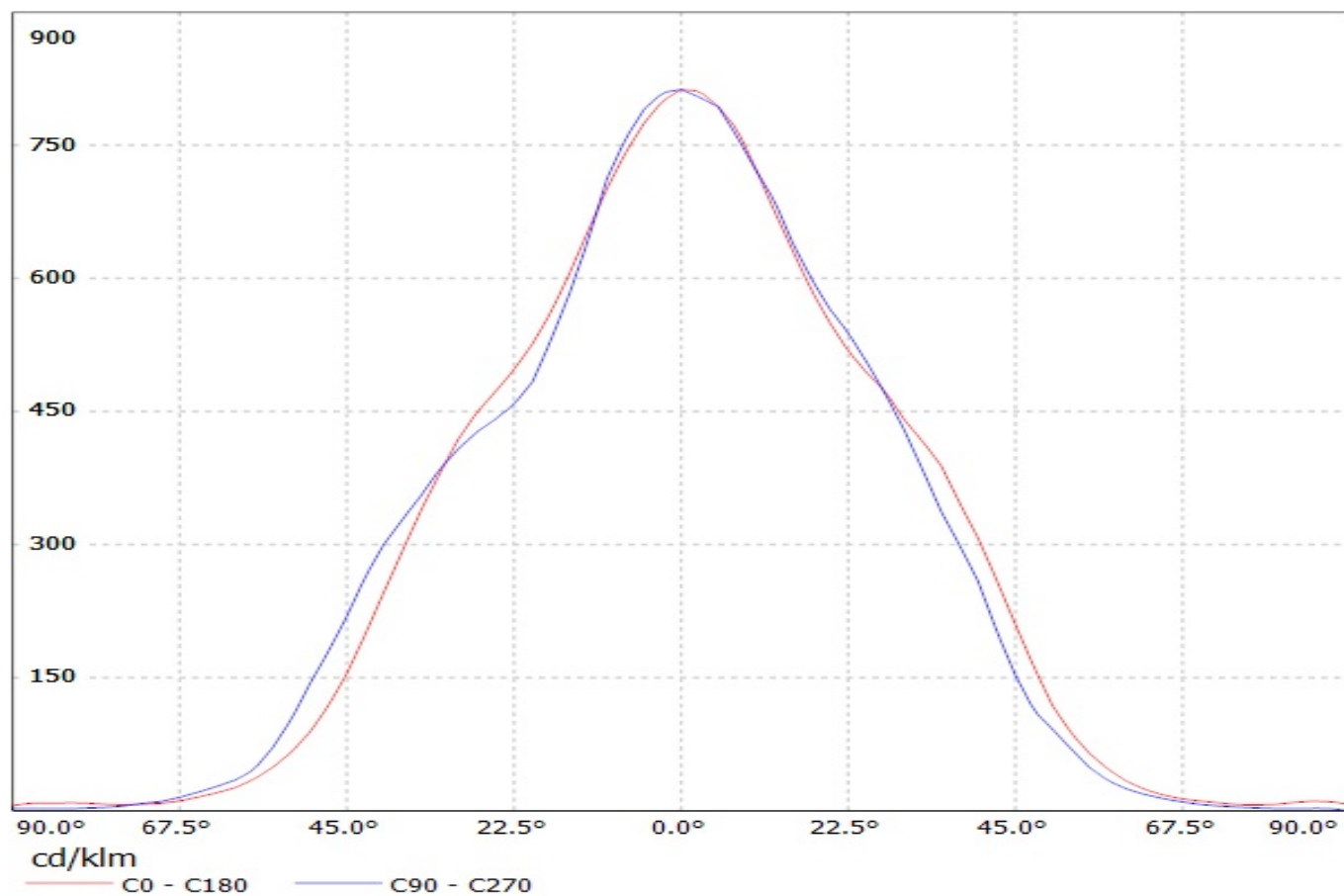
SHEET

1/1

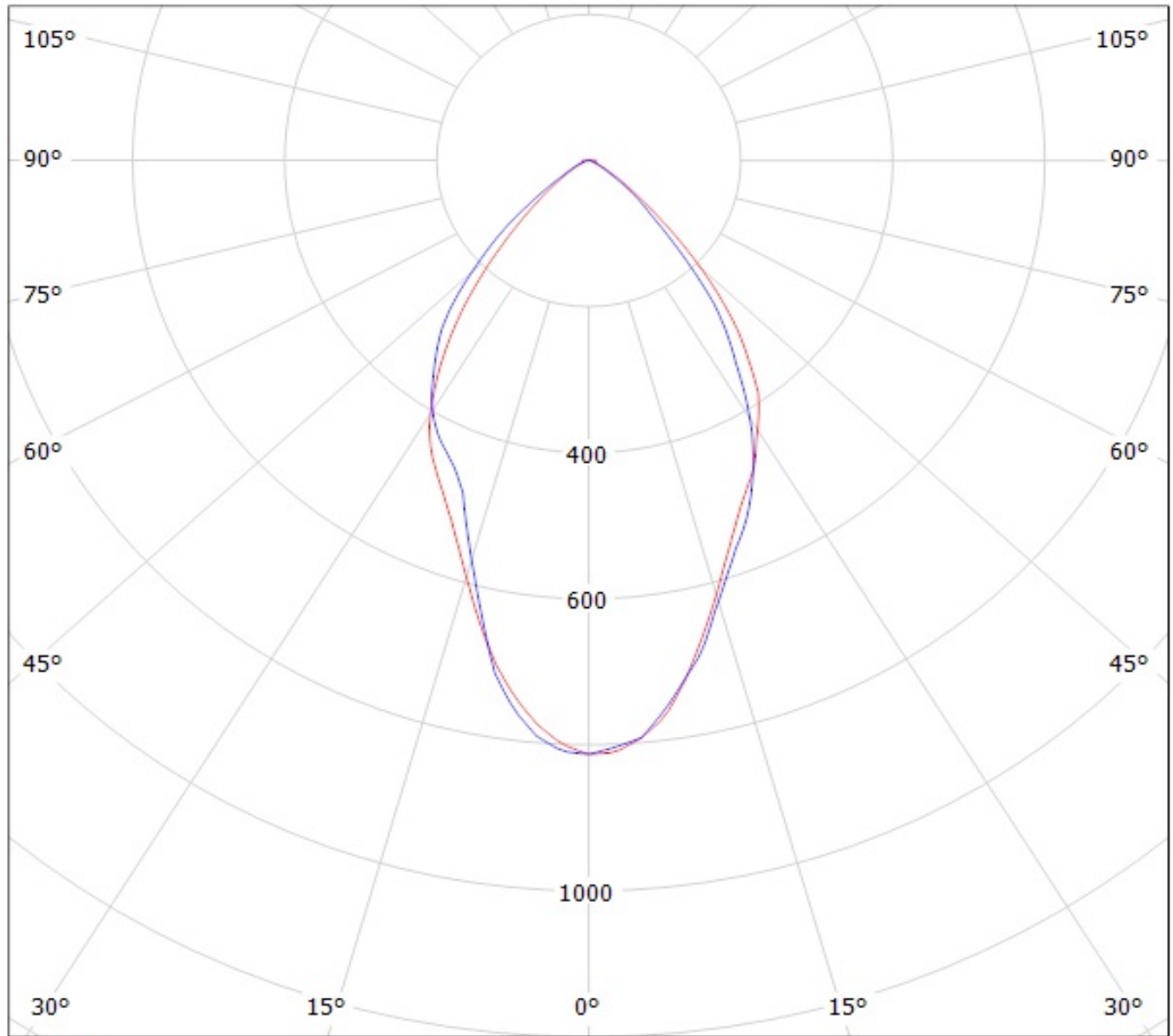
D

A

Luminaire: Ledil Oy FA11027_TINA-WW (Osram Oslon 80dg 85lm @ 250mA) Efficiency=87%
Lamps: 1 x Osram Oslon 80dg 85lm @ 250mA



Luminaire: Ledil Oy FA11027_TINA-WW (Osram Oslon 80dg 85lm @ 250mA) Efficiency=87%
Lamps: 1 x Osram Oslon 80dg 85lm @ 250mA



cd/klm

— C0 - C180 — C90 - C270

NOTE: The typical divergence will be changed by different color, chip size and chip position tolerance. The typical total divergence is the full angle measured where the luminous intensity is half of the peak value.