

PRODUCT NUMBER		DESCRIPTION	
10129181-101LF		WITH GUIDE PIN AND PCB SCREW MOUNTS	

32.40

29.70

ROW 12

ROW 11

ROW 10

ROW 9

ROW 8

ROW 7

ROW 6

ROW 5

ROW 4

ROW 3

ROW 2

ROW 1

T S R Q P O N M L K J I H G F E D C B A

39.30

15.0

28.15

SEE NOTE 5

32.65

4.0

11X 2.0

84X 1.45±0.15
GROUNDS

156X 1.25±0.15
SIGNALS

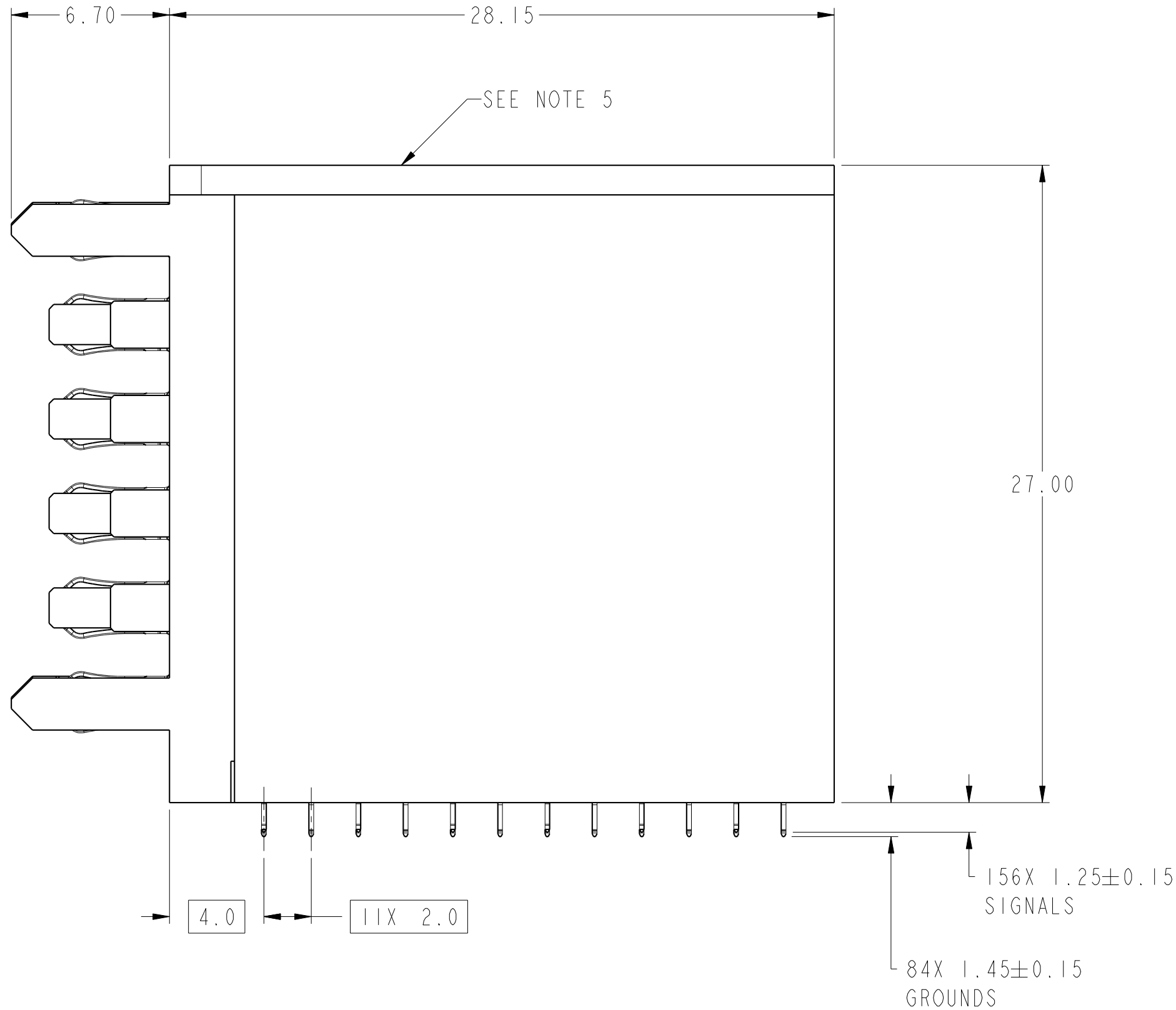
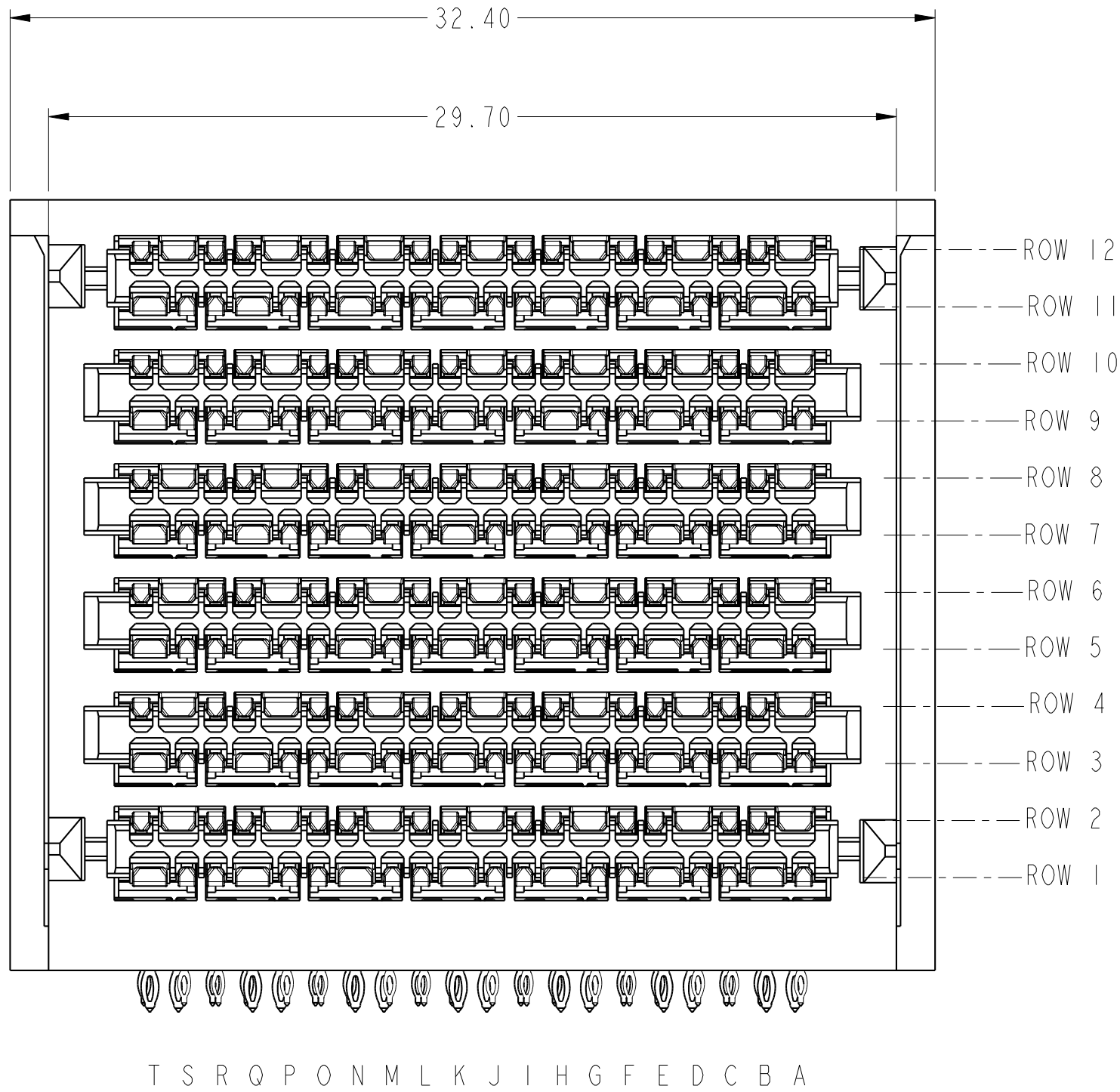
spec ref	---			dr	Mark R Gray	2014/02/24	projection		size	A2	scale	5:1		
tolerance std	TOLERANCES UNLESS OTHERWISE SPECIFIED			eng	Peng-Bing Fu	2017/11/10			ecn no	ELX-DG-28422-1				
ASME Y14.5M				chr	Justin Chen	2017/11/29			rel level	Released				
				appr	Heaven Cen	2017/11/30			product family					
surface		linear	0.X	±.3		title		ExaMAX Orthogonal R.A. Header		dwg no	10129181		rev	B
			0.XX	±.10		6 PAIR, 12 IMLA (240 Position) ASS'Y								
			0.XXX	±.050										
		angular	0°	±°	cat. no.		Product - Customer Drw		sheet 1 of 7					

PDS: Rev :B

STATUS:Released

Printed: Dec 12, 2017

PRODUCT NUMBER	DESCRIPTION
10129181-102LF	NO GUIDE PIN, NO PCB SCREW MOUNTS

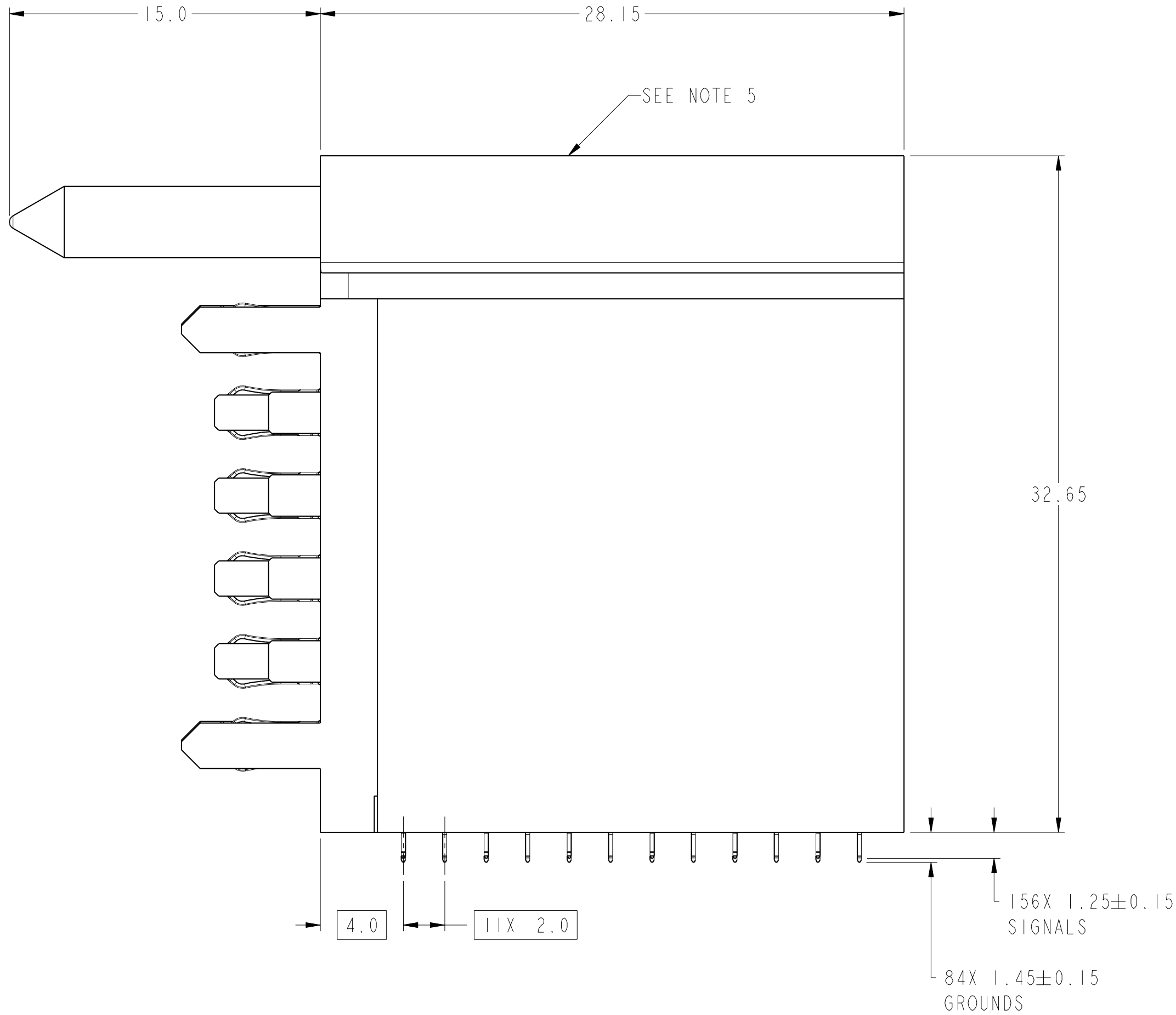
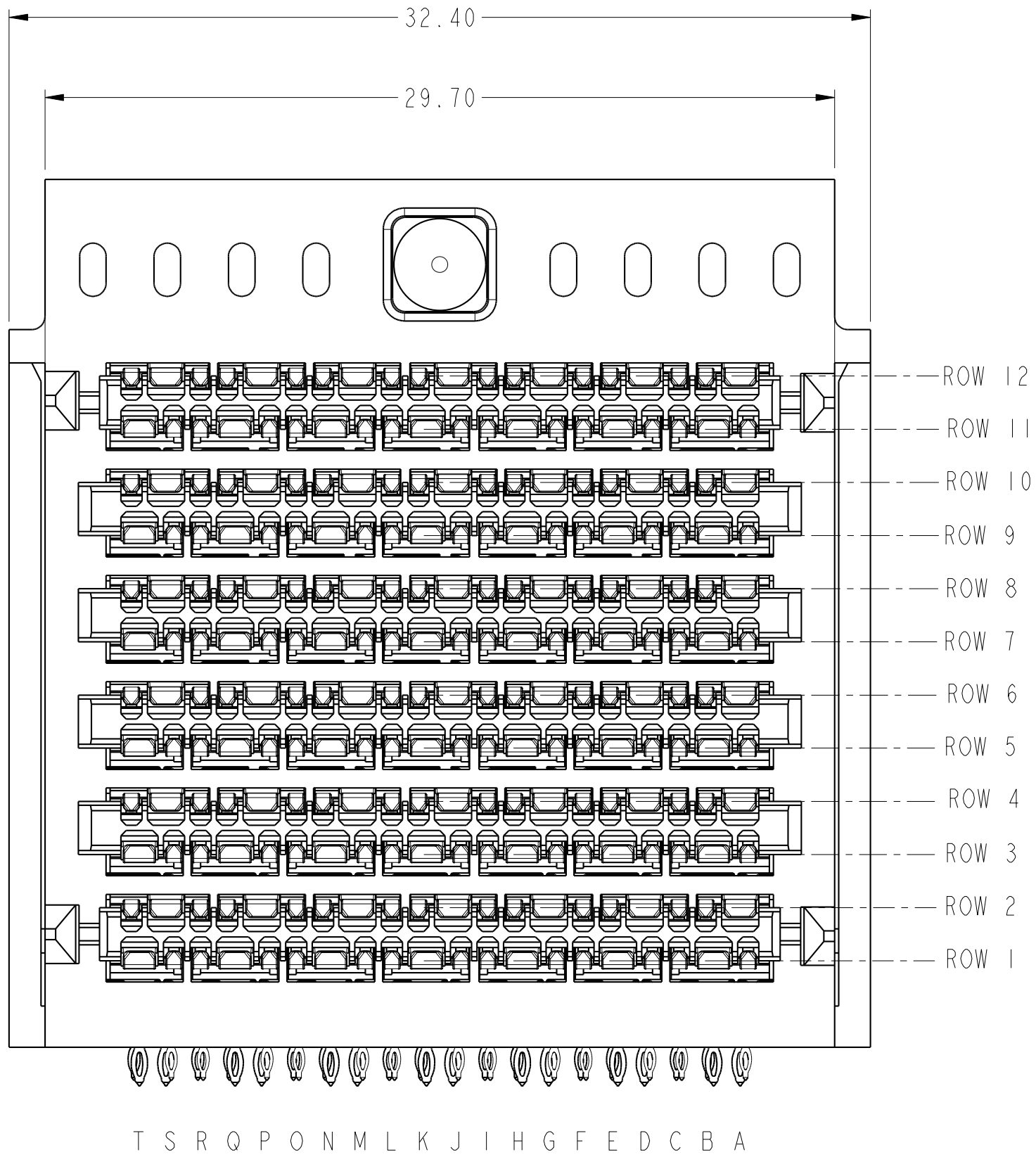


spec ref	---	dr	Mark R Gray	2014/02/24	projection	MM	size	A2	scale	5:1
tolerance std	ASME Y14.5M	eng	Peng-Bing Fu	2017/11/10	chr	Justin Chen	ecn no	ELX-DG-28422-1		
		appr	Heaven Cen	2017/11/30	product family	-	rel level	Released		
surface	✓	linear	0.X ±.3 0.XX ±.10 0.XXX ±.050	angular	0° ±°	Amphenol FCi	title	ExaMAX Orthogonal R.A. Header 6 PAIR, 12 IMLA (240 Position) ASS'Y	dwg no	10129181
							cat. no.	-	Product - Customer Drw	sheet 2 of 7

Amphenol
FCi

© 2016 AFCi

PRODUCT NUMBER	DESCRIPTION
10129181-103LF	WITH GUIDE PIN, NO PCB SCREW MOUNTS

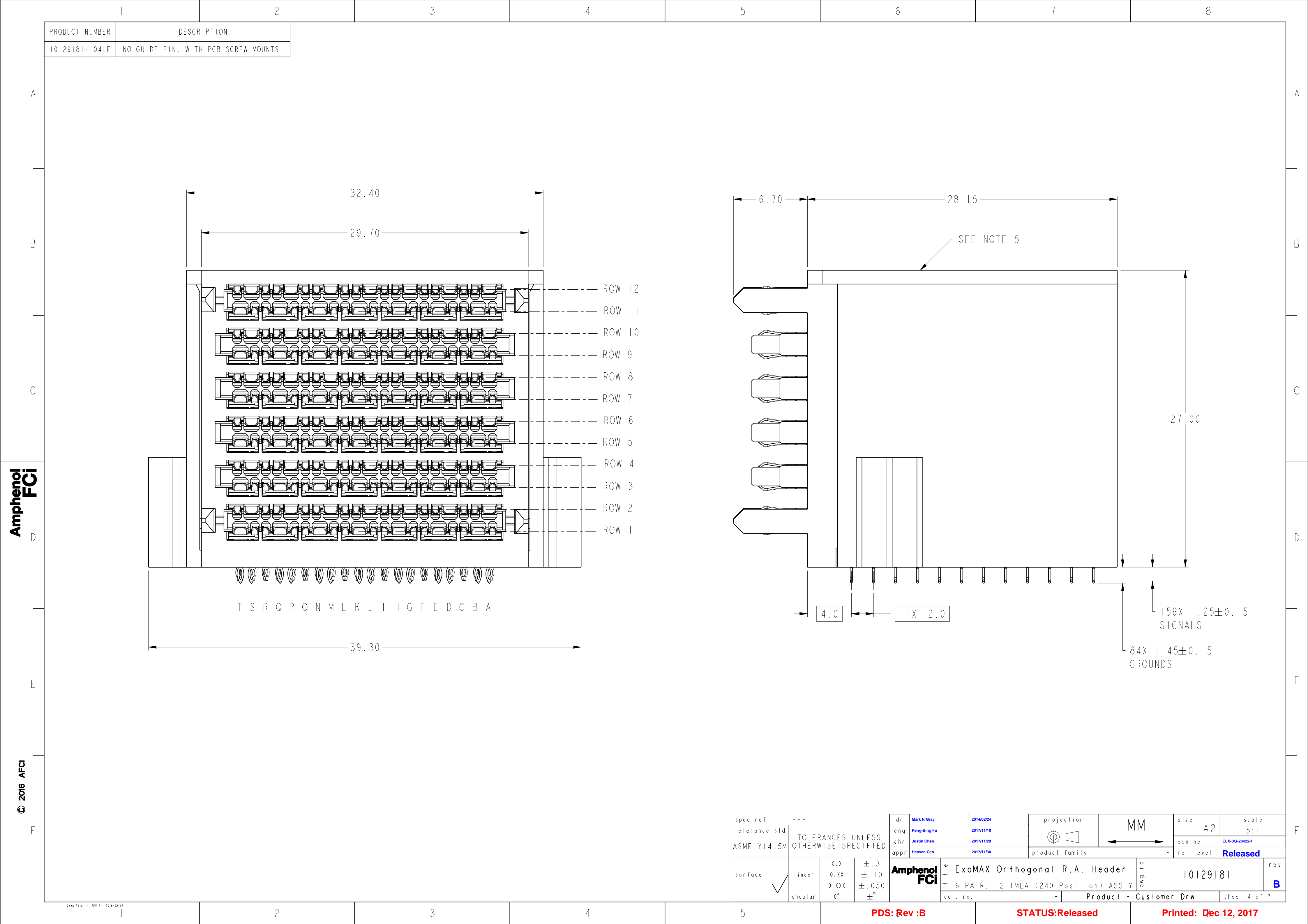


spec ref	---	dr	Mark R Gray	2014/02/24	projection	MM	size	A2	scale	5:1
tolerance std	ASME Y14.5M	eng	Peng-Bing Fu	2017/11/10	chr	Justin Chen	2017/11/29	ecn no	ELX-DG-28422-1	
		appr	Heaven Cen	2017/11/30	product family	-	rel level	Released		
surface	✓	linear	0.X	±.3	Amphenol FCi	title	ExaMAX Orthogonal R.A. Header	dwg no	10129181	rev
			0.XX	±.10			6 PAIR, 12 IMLA (240 Position) ASS'Y			B
		angular	0°	±°		cat. no.	-	Product - Customer Drw	sheet 3 of 7	

PDS: Rev :B

STATUS:Released

Printed: Dec 12, 2017



PRODUCT NUMBER	DESCRIPTION
10129181-104LF	NO GUIDE PIN, WITH PCB SCREW MOUNTS

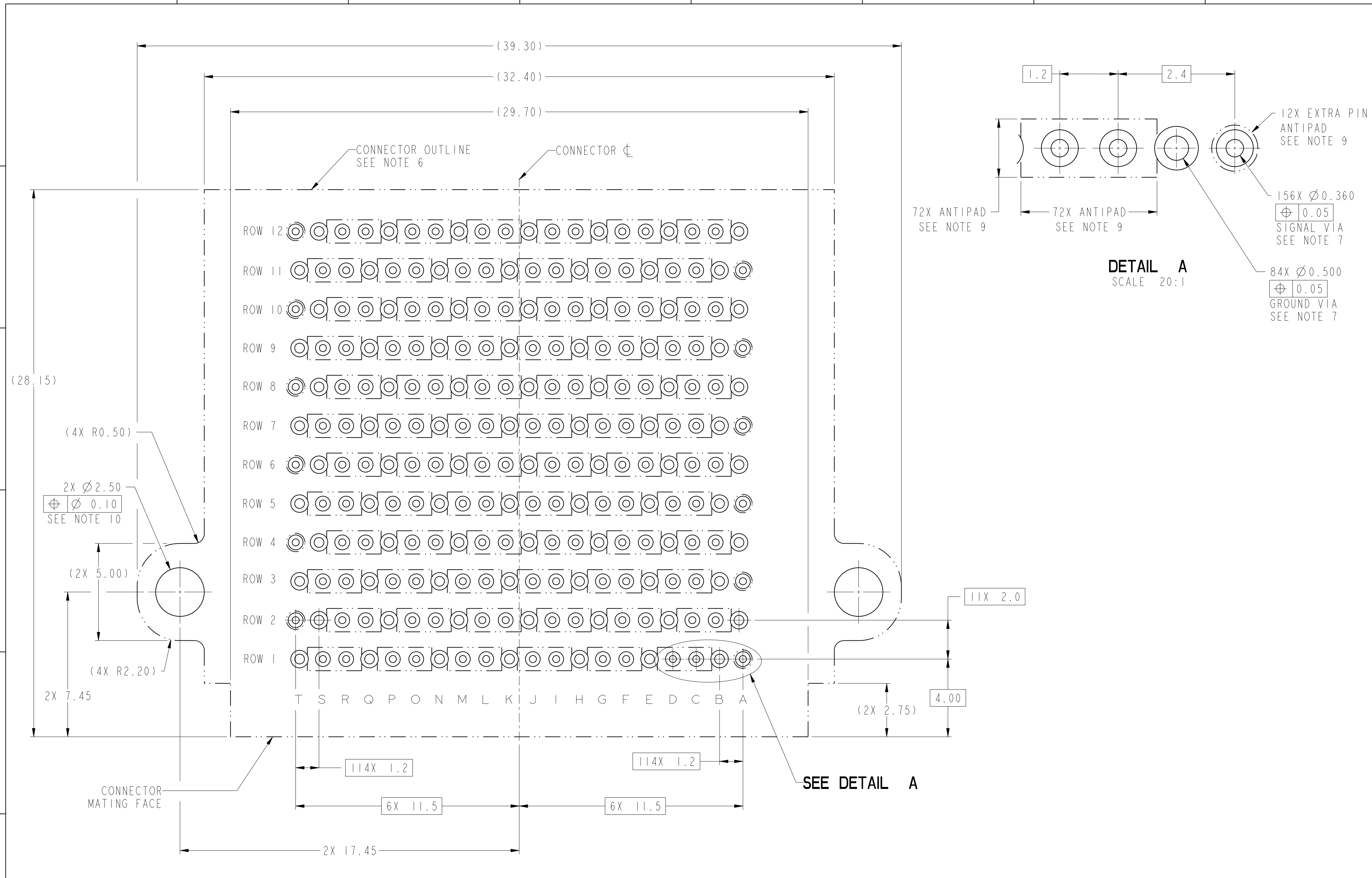
spec ref			---		dr	Mark R Gray	2014/02/24	<div>projection</div> <div></div>	<div>MM</div> <div></div>	size	A2	scale	5:1	
tolerance std		TOLERANCES UNLESS OTHERWISE SPECIFIED		eng	Peng-Bing Fu	2017/11/10	ecn no			ELX-DG-28422-1				
ASME Y14.5M				chr	Justin Chen	2017/11/29	rel level			Released				
				appr	Heaven Cen	2017/11/30	product family			-				
surface	<div>✓</div>	linear	0.X	±.3	Amphenol FCI	title	ExaMAX Orthogonal R.A. Header			dwg no	10129181		rev	B
			0.XX	±.10										
			0.XXX	±.050										
		angular	0°	±°			cat. no.		-		Product - Customer Drw			

Amphenol
FCI

© 2016 AFCI

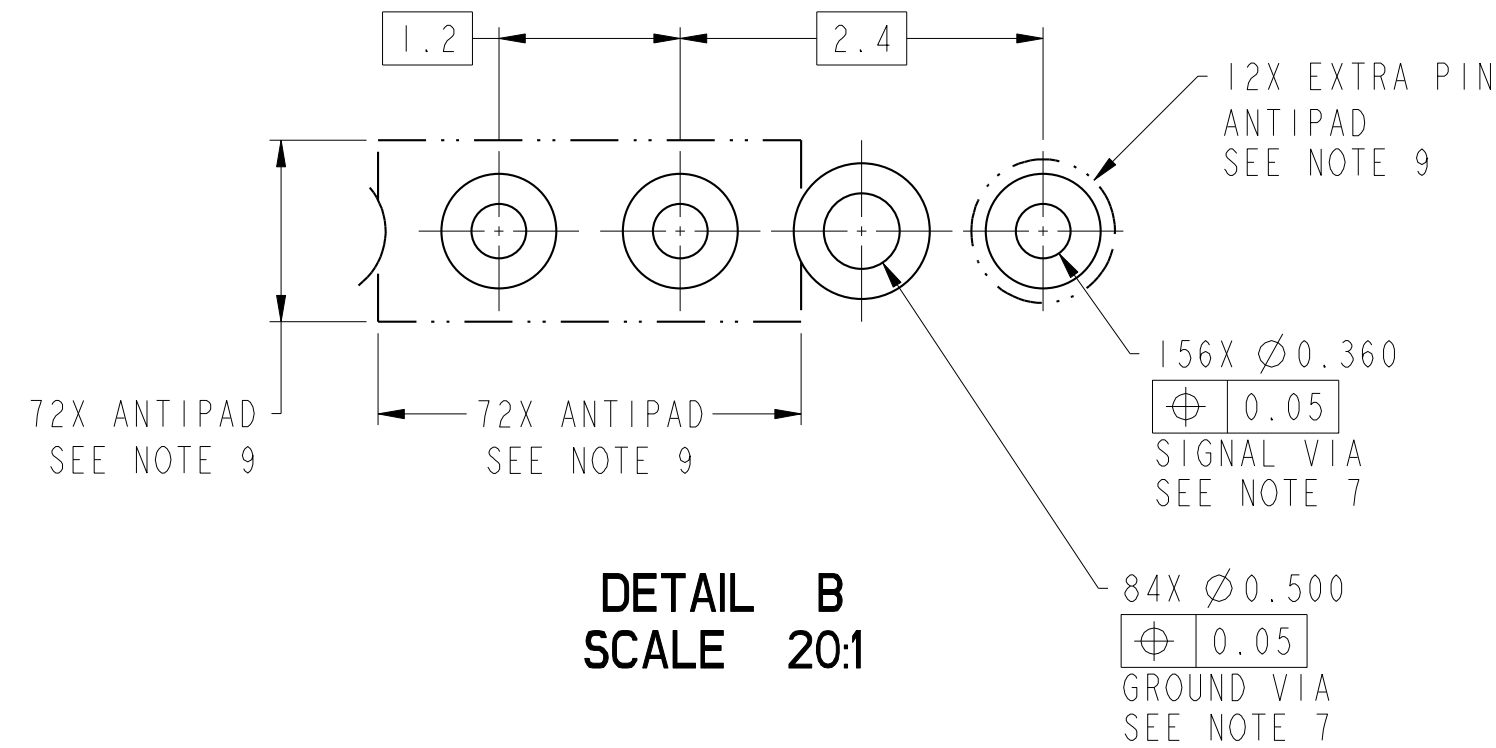
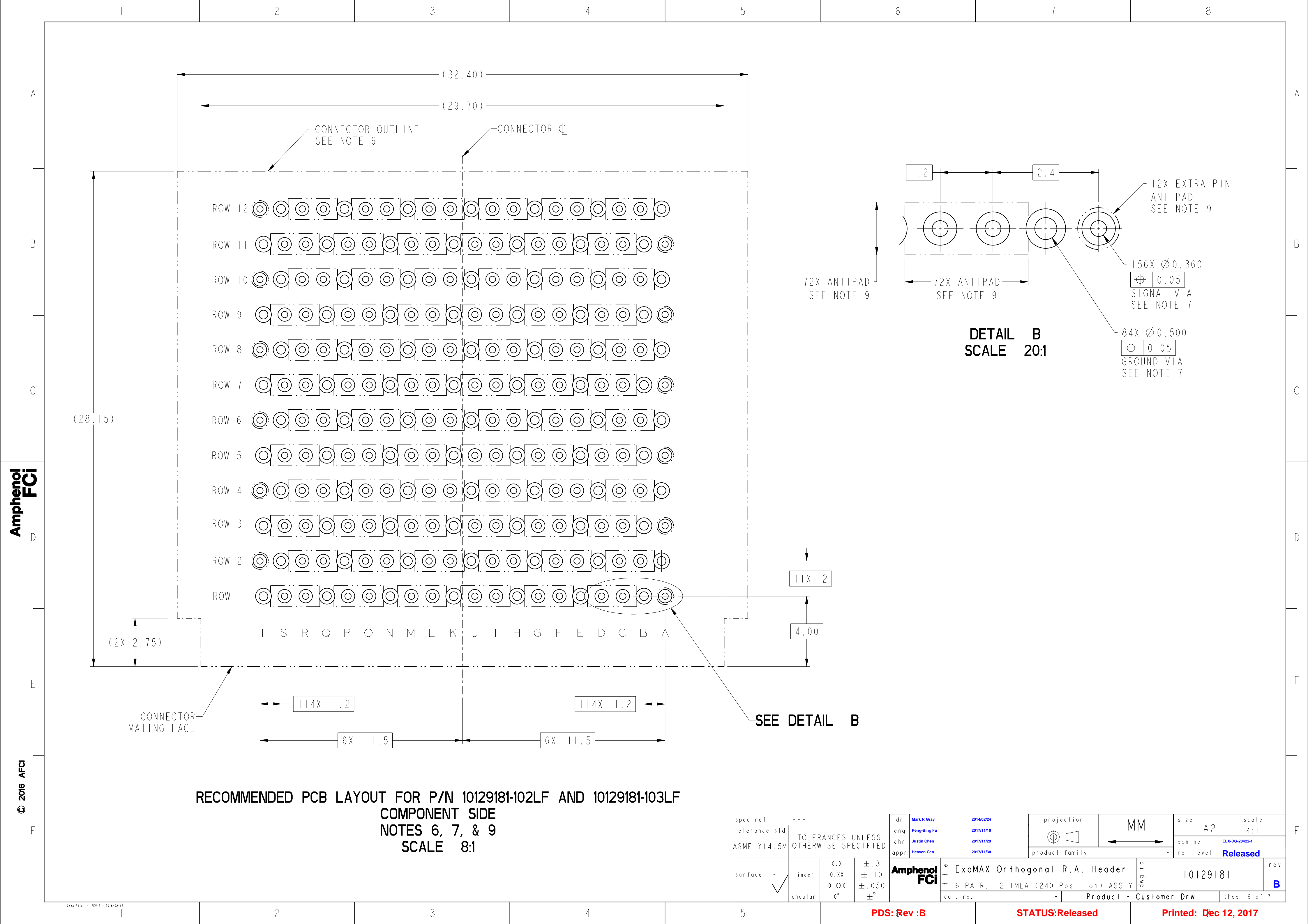
Amphenol
FCi

© 2016 APCI

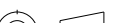
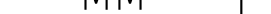


RECOMMENDED PCB LAYOUT FOR P/N 10129181-101LF AND 10129181-104LF
COMPONENT SIDE
NOTES 6, 7, 9, & 10
SCALE 8:1

spec ref	---	dr	Mark R Gray	2014/02/24	projection	MM	size	A2	scale	2:1
tolerance std	ASME Y14.5M	eng	Peng-Bing Fu	2017/11/10	chr	Justin Chen	ecn no	ELX-DG-28422-1	rel level	Released
surface	linear	0.X	±.3	0.XX	±.10	0.XXX	±.050	angular	0°	±°
Amphenol FCI		title		ExaMAX Orthogonal R.A. Header		6 PAIR, 12 IMLA (240 Position) ASS'Y		dwg no		10129181
cat. no.		Product - Customer Drw		sheet 5 of 7		rev		B		



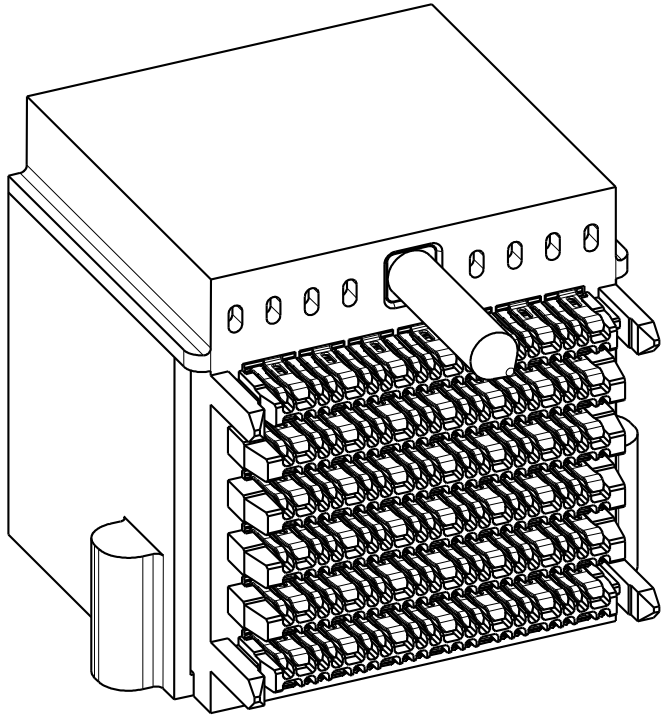
RECOMMENDED PCB LAYOUT FOR P/N 10129181-102LF AND 10129181-103LF
COMPONENT SIDE
NOTES 6, 7, & 9
SCALE 8:1

spec ref		---		dr		Mark R Gray		2014/02/24		projection		MM		size		A2		scale		4:1					
tolerance std		TOLERANCES UNLESS OTHERWISE SPECIFIED		eng		Peng-Bing Fu		2017/11/10						ecn no		ELX-DG-28422-1									
chr				Justin Chen		2017/11/30		product family						-		rel level		Released							
asme				Y14.5M		oppr		Heaven Chen						2017/11/30		-									
surface		linear		0.X		±.3		Amphenol FCI		title		ExaMAX Orthogonal R.A. Header		dwg no		10129181		rev		B					
																						0.XX		±.10	
																						0.XXX		±.050	
																						angular		0°	

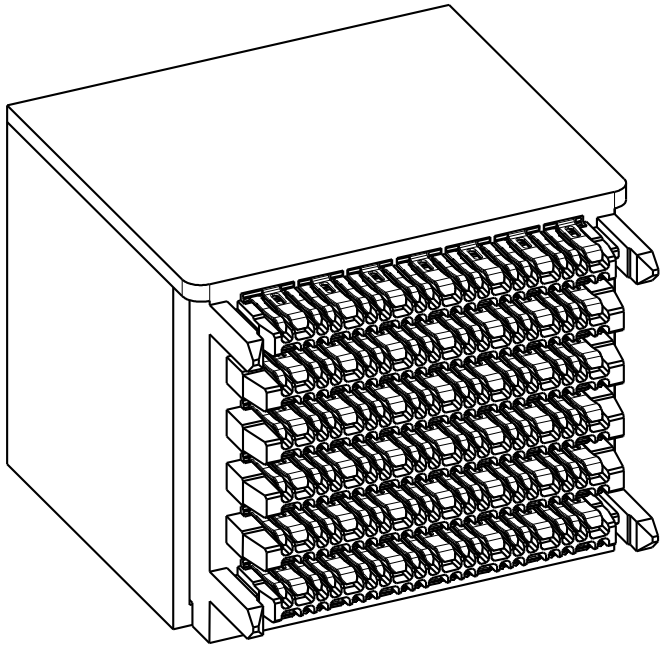
NOTES:

- 1 - CONNECTOR MATERIALS:
FRONT HOUSING: HIGH TEMP THERMOPLASTIC, BLACK, UL94-V0
ORGANIZER: HIGH TEMP THERMOPLASTIC, BLACK, UL94-V0
IMLA PLASTIC: HIGH TEMP THERMOPLASTIC, BLACK, UL94-V0
CONTACT: COPPER ALLOY
GUIDE PIN: STAINLESS STEEL
MACHINE SCREW AND LOCK WASHER: STAINLESS STEEL
- 2 - CONTACT PLATING:
SEPARABLE INTERFACE:
PERFORMANCE-BASED PLATING, QUALIFIED TO MEET THE
REQUIREMENTS OF FCI PRODUCT SPECIFICATION GS-12-1096
INCLUDING TELCORDIA GR-1217-CORE (NOVEMBER 1995)
CENTRAL OFFICE TEST SEQUENCE

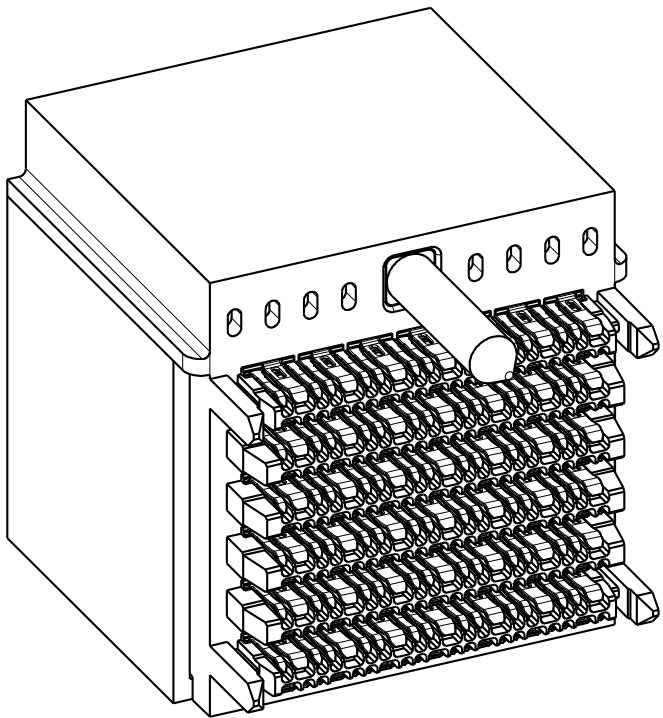
PRESS-FIT TAILS: TIN OVER NICKEL (LEAD FREE)
- 3 - PRODUCT SPECIFICATION: GS-12-1096
- 4 - PACKAGING MEETS GS-14-920 LEAD FREE LABELING
SPECIFICATION.
- 5 - PRODUCT MARKING, (PART NUMBER & LOT CODE), ON THIS SURFACE.
- 6 - CONNECTOR OUTLINE MAY BE SCREEN PRINTED ONTO CUSTOMER PCB TO
BE USED AS A GUIDE FOR MANUAL CONNECTOR PLACEMENT.
- 7 - REFER TO CUSTOMER DRAWING 10119933 FOR INFORMATION
ON PCB HOLE DIAMETERS AND PLATING OPTIONS
- 8 - LEAD FREE PRODUCT MEETS THE EUROPEAN UNION DIRECTIVES &
OTHER COUNTRY REGULATIONS AS DESCRIBED IN GS-47-0004
- 9 - REFER TO ROUTING GUIDE GS-20-0511 FOR RECOMMENDATIONS
ON OPTIMIZATION OF FOOTPRINT AND TRACE ROUTING LAYOUT.
- 10 - IT IS RECOMMENDED THAT CONNECTORS WITH THE OPTIONAL SCREW MOUNTS USE A
TRI-ROUNDULAR, OR TRILOBULAR® SHAPED M1.91 OR M2 THREAD FORMING SCREW DESIGNED
SPECIFICALLY FOR PLASTIC MATERIAL TO SECURE THE CONNECTOR TO THE PCB. THE
SCREW LENGTH SHOULD BE 4.00mm TO 8.00mm LONG PLUS THE BOARD THICKNESS.
- 11 - THE CONNECTOR WILL WITHSTAND EXPOSURE TO 260° C PEAK TEMPERATURE FOR 10-30
SECONDS IN A CONVECTION, INFRA-RED, OR VAPOR PHASE REFLOW OVEN.



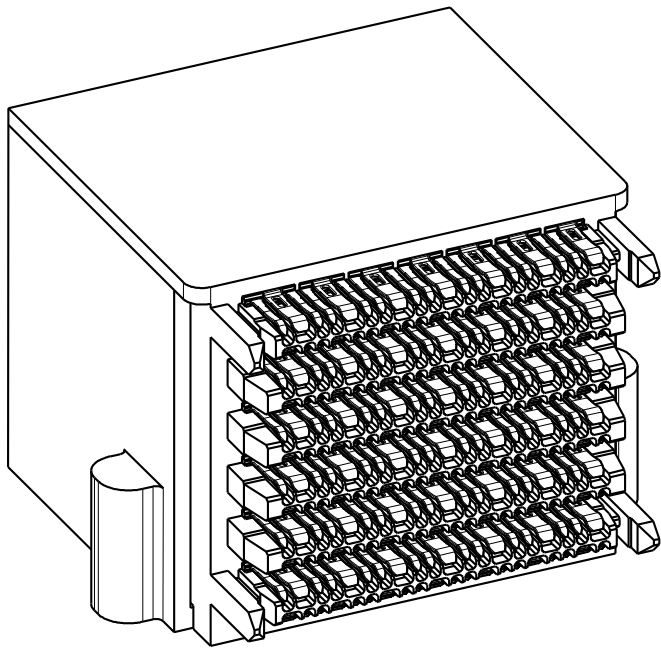
10129181-101LF



10129181-102LF



10129181-103LF



10129181-104LF

spec ref		---		dr		Mark R Gray		2014/02/24		projection		<div>MM</div>		size		A2		scale		2:1							
tolerance std		TOLERANCES UNLESS OTHERWISE SPECIFIED		eng		Peng-Bing Fu		2017/11/10						ecn no		ELX-DG-28422-1											
chr				Justin Chen		2017/11/30		product family						rel level		Released											
appr				Heaven Cen																							
surface		<div>linear</div> <div>0°</div> <div>angular</div>		<div>0.X</div> <div>±.3</div> <div>0.XX</div> <div>±.10</div> <div>0.XXX</div> <div>±.050</div> <div>±°</div>		Amphenol FCI		title		ExaMAX Orthogonal R.A. Header 6 PAIR, 12 IMLA (240 Position) ASS'Y						dwg no		10129181						rev		B	
								cat. no.		Product - Customer Drw						sheet 7 of 7											