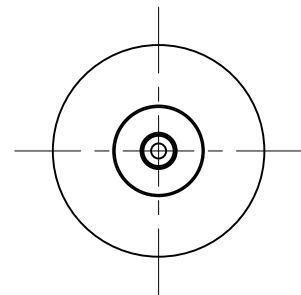
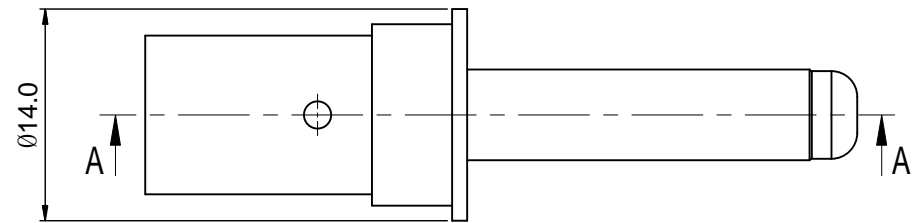
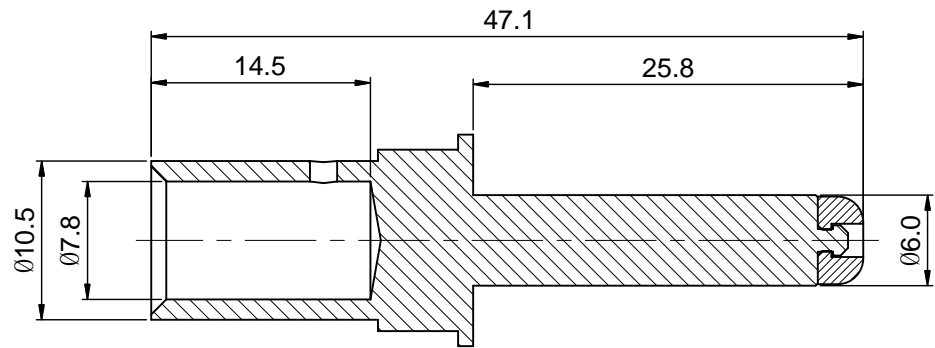


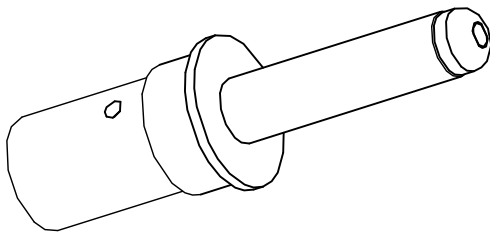
REVISIONS					
REV	ECO	DESCRIPTION	DATE	BY	APPR
B1	-	RELEASE NEW DWG FORMAT	08/22/14	DRACK	TOMMY



- NOTES: UNLESS OTHERWISE SPECIFIED
- MATERIAL: COPPER ALLOY, SILVER PLATED
  - SPECIFICATIONS:
    - 2.1 RATED CURRENT: 120 AMPS
    - 2.2 CONTACT RESISTANCE: <0.3 MILLIOHM
    - 2.3 AVAILABLE WIRE RANGE: 25 MM<sup>2</sup>
    - 2.4 RoHS COMPLIANT
  - ALL DIMENSIONS ARE FOR REFERENCE USE ONLY.



SECTION A-A



	SEE PART NUMBER		CHART			
QUANTITY	PART NUMBER		DESCRIPTION		ITEM	
MATERIALS LIST						
<div>UNLESS OTHERWISE SPECIFIED</div> <div>1) All dimensions are in metric(mm).</div> <div>2) Tolerances are as follows:</div> <div>1 PL DEC ±0.30</div> <div>2 PL DEC ±0.15</div> <div>3 PL DEC ±0.08</div> <div>3) Note reference = </div> <div>MATERIAL SPECIFICATIONS:</div> <div>PROCESS SPECIFICATIONS:</div> <div>NEXT ASSY:</div>		SIGNATURES		DATE	<div>Amphenol</div> <div>Sine Systems - <a href="http://www.amphenol-sine.com">www.amphenol-sine.com</a></div> <div>44724 Morley Drive</div> <div>Clinton Township, MI 48036</div>	
		DRAWN: Drack		08/22/14		
		CHECKED:				
		ENGINEER:				
		APPROVAL:				
		CUSTOMER:		<div>ECO-MATE,6MM PIN CONTACT,CRIMP 25MM<sup>2</sup></div>		
		THIS DRAWING IS SUPPLIED FOR INFORMATION ONLY. DESIGN FEATURES, SPECIFICATIONS AND PERFORMANCE DATA SHOWN HEREON ARE THE PROPERTY OF THE AMPHENOL CORPORATION. NO RIGHTS OF REPRODUCTION ARE IMPLIED. ALL DIMENSIONS ARE SUBJECT TO NORMAL MANUFACTURING VARIATIONS.				
SIZE		TYPE	DWG NO:	REVISION		
B		C-	HP25BCS	B1		
SCALE:		2 : 1		SHEET 1 OF 1		