

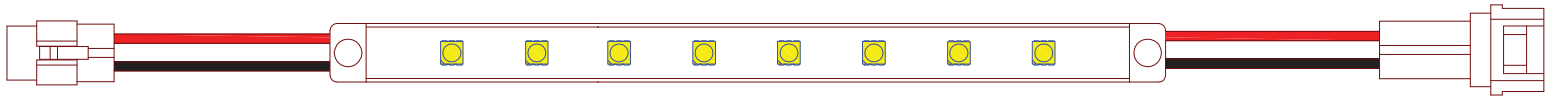
## ALUMILINE<sup>®</sup> c UL<sup>®</sup> US LISTED WATER RESISTANT

### ZWF-SERIES



**Accessories:**

ZWF-1000-I	Input Connector	ZPS-2435	— 24 Volt Power Supplies
ZWF-400-J	Joiner Connector	ZPS-2460	
ZWF-12-C	Mounting Clip	ZPS-24150	
ZWF-1290-C	Right Angle Mounting Clip		
ZDM-01	PWM LED Dimmer		



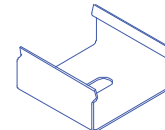
ALUMILINE<sup>®</sup> ZWF DIAGRAM



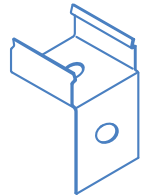
ZWF-400-J



ZWF-1000-I



ZWF-12-C



ZWF-1290-C

### APPLICATIONS

JKL's UL listed Alumiline<sup>®</sup> LED ZWF-series light bars are commonly used in sign applications, architectural accent lighting, display case illumination and decorative lighting. Slimmer than the ZAF Alumiline<sup>®</sup> series, the ZWF fixtures use less power and are dust and water resistant with a rating of IP67.

### WHITE RANGE

The Alumiline<sup>®</sup> ZWF series is available in two color temperatures:

6000°K  
COOL

3000°K  
WARM

### LENGTH

The Alumiline<sup>®</sup> ZWF series comes in five lengths - 337mm, 438mm, 638mm, 939mm and 1239mm. The design allows for joining fixtures together with a jumper connector, rated for a maximum of 5.0 Amps. The jumper connector comes in four lengths; 175mm, 200mm, 400mm and 915mm.



ROHS COMPLIANT  
ISO9001 CERTIFIED

WWW.JKLLAMPS.COM  
SALES@JKLLAMPS.COM

800-421-7244

Quality Lighting Solutions  
**JKL<sup>®</sup>**  
COMPONENTS  
CORPORATION

Since 1972

## ZWF-SERIES

### POWER INPUT

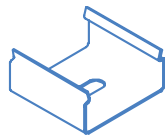
The ZWF bars operate on 24 VDC with a general power requirement of 3 Watts per linear foot. The current requirement for the longest unit (1.2meter or 4 feet) is 480mA. An input connector (ZWF-1000-I) plugs into the strip and connects to a 24 VDC power supply with wire nuts. The connector has a maximum rating of 5.0 Amps. 12 meters (40') of the LED bar can be connected without overheating.

### CONNECTION & DISCONNECTION

Disconnect power before installing or servicing the fixtures. The ZWF series LED linear strips have IP67 rated connectors. You may connect the strips in series, or if additional spacing is required between units a jumper is available (in 8", 16" and 36" lengths) for interconnecting. The power input connection has 3' wires for remotely placing your power supply. The connector linking the fixture can be disconnected by depressing the black tab and pulling.

### INSTALLATION & MOUNTING

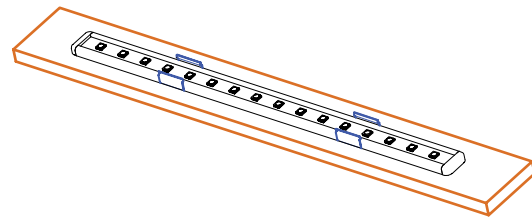
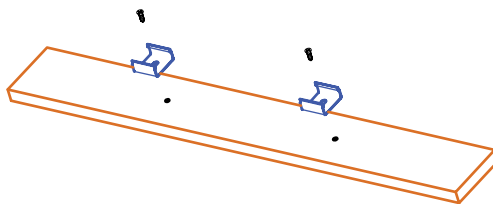
The ZWF fixtures are fitted with mounting holes for ease of installation. Optional mounting clips are recommended for additional support when high winds or vibrations are present. Use a #8 screw for installation



ZWF-12-C MOUNTING CLIP



ZWF-1290-C 90° MOUNTING CLIP



### OUTPUT DIMMING

Optimum dimming is accomplished with a PWM, such as the ZDM-01, which will maintain power to the ZWF Alumiline<sup>®</sup>. The dimmer varies the duty-cycle to the LED which permits easy changes to the light output.



ROHS COMPLIANT  
ISO9001 CERTIFIED

Quality Lighting Solutions  
**JKL<sup>®</sup>**

WWW.JKLLAMPS.COM  
SALES@JKLLAMPS.COM

800-421-7244

COMPONENTS  
CORPORATION

Since 1972