



PRODUCT DATASHEET

Brooke series

last update 21/7/2015

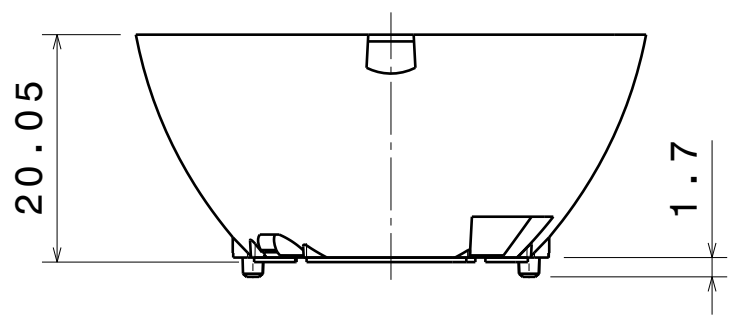
DETAILS

Product Number	CA14591_BROOKE-XW
Family	Brooke
Type	RefAssy
Color	white
Diameter	45 mm
Height	21.1 mm
Style	round
Optic Material	HRPC
Holder Material	
Fastening	
Status	ready
ROHS Compliant	Yes
Date Updated	21/07/2015

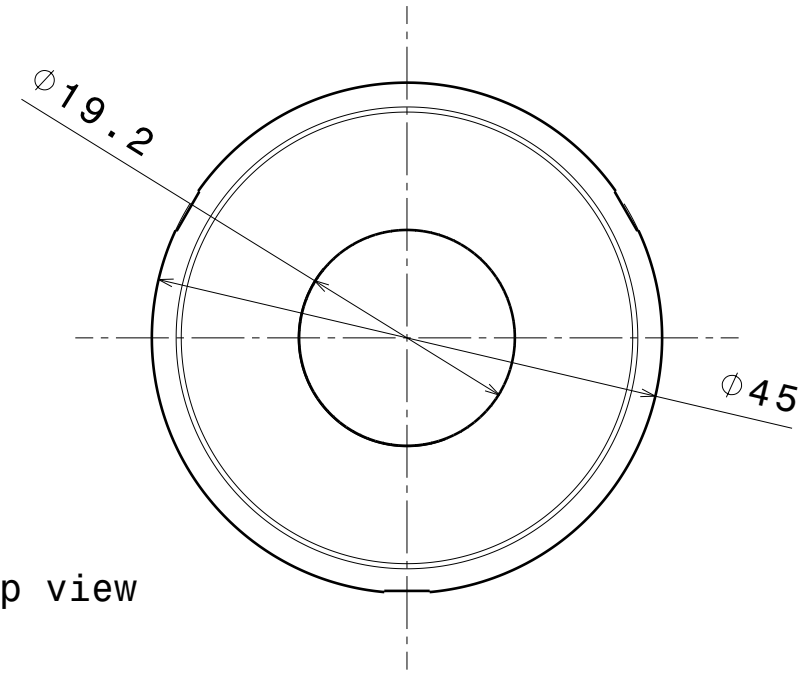


OPTICAL PROPERTIES

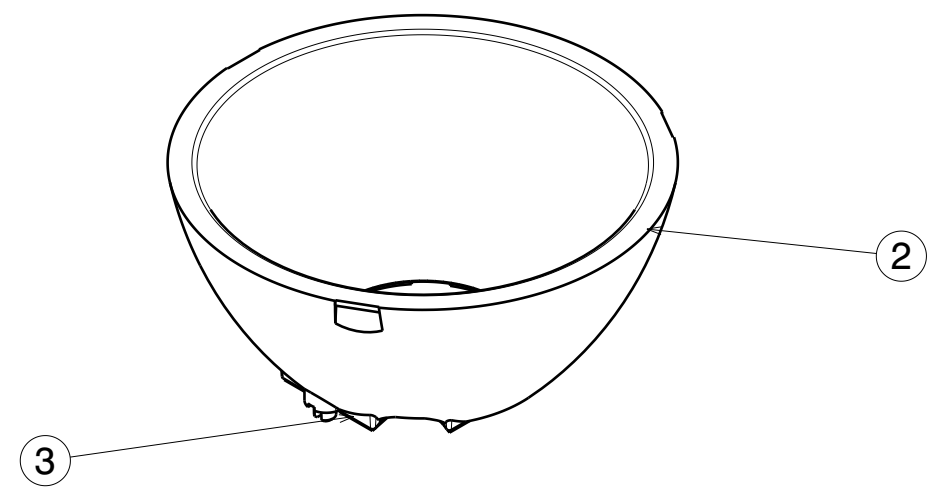
	Viewing	Light	Effi-		
LED	Angle	Beam	ciency	cd/lm	Connector
BXRA ES Rectangle	86 deg	Wide	94 %	0.530	-



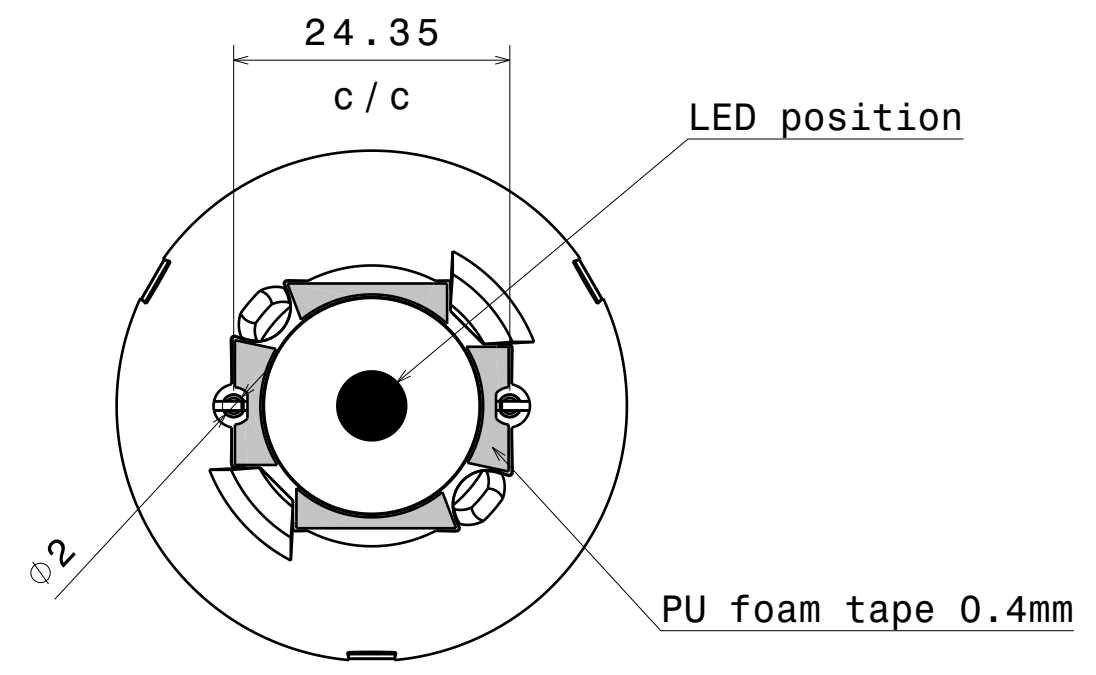
Front view



Top view



Isometric view



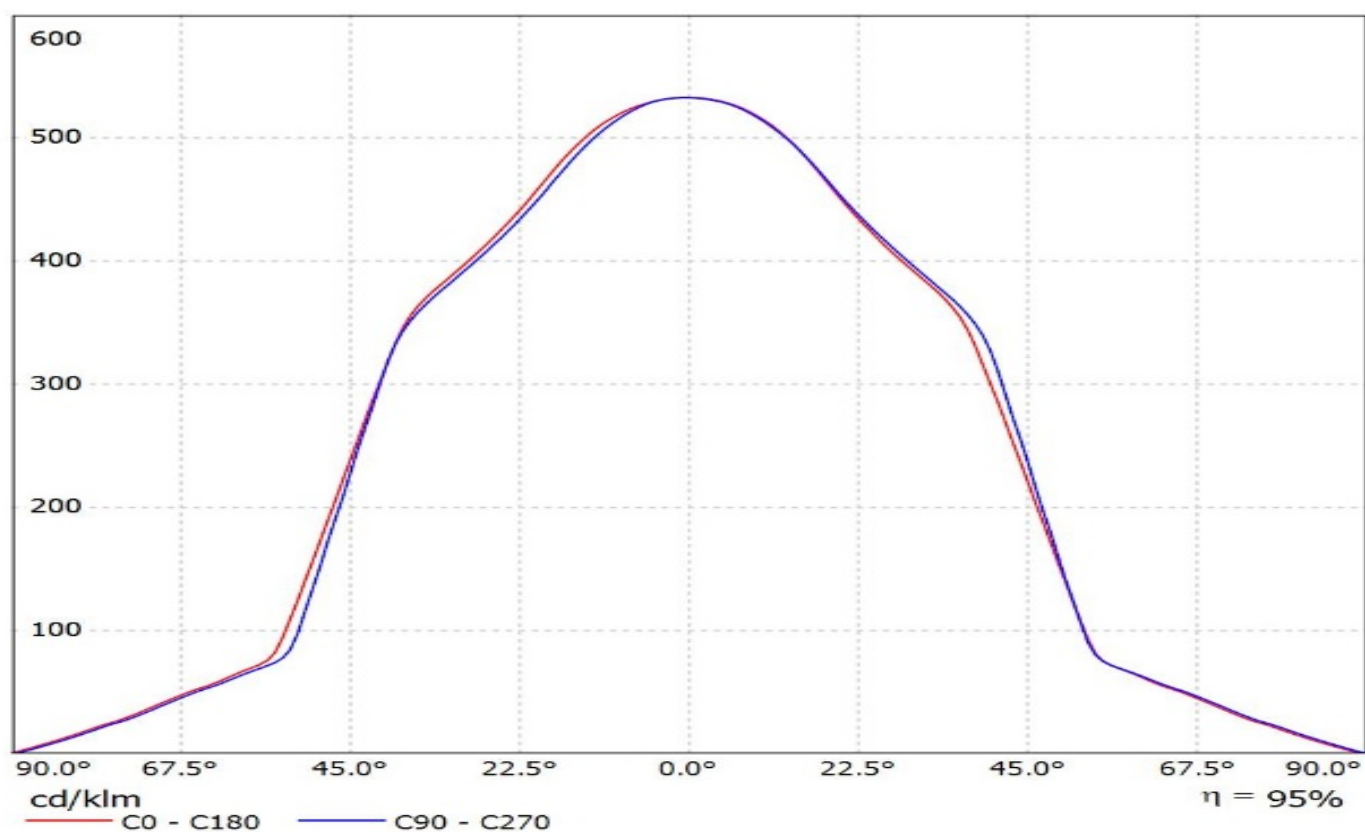
Bottom view

INDEX	PART NO	DESCRIPTION	MATERIAL	COLOUR
1	C14528	BROOKE-XW	PC	white

<div>Tolerances if not otherwise shown According to DIN ISO 2768-1 Linear measures: Up to 30mm class M, otherwise class C According to DIN ISO 2768-2 Form and position: class L</div> <div>THIRD ANGLE PROJECTION: </div> <div>This drawing is the property of LEDiL Oy. It may not be reproduced, copied or communicated without a written agreement with LEDiL Oy.</div>		<div><div>LEDiL</div><div>Ledil Oy Salorankatu 10 FIN 24240 SALO Finland</div></div>		
		<div>DRAWING TITLE</div> <div>CA14591_BROOKE-XW</div>		
SIZE		PART NUMBER		
A3		CA14591		
SCALE		3:2	WEIGHT	4,74 g
			SHEET	1 / 1

Ledil CA14591_BROOKE-XW_(BXRA_ES_Rectangle) / LDC (Linear)

Luminaire: Ledil CA14591_BROOKE-XW_(BXRA_ES_Rectangle)
Lamps: 1 x Bridgelux_BXRA_ES_Rectangle_(BXRA-330E2000-B-00)
_827.946lm@250mA_P=8.26425W_I=0.250A

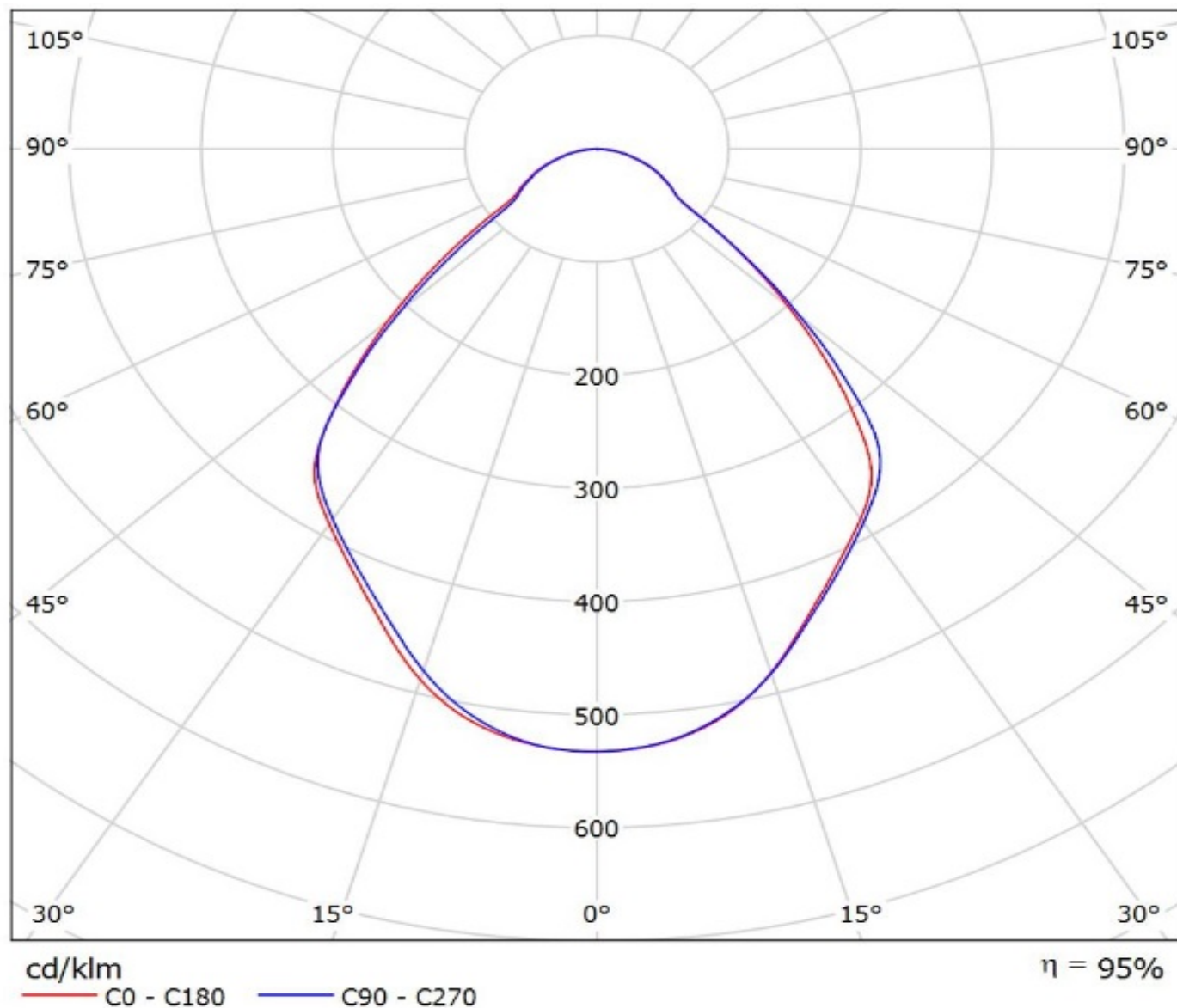


Ledil CA14591_BROOKE-XW_(BXRA_ES_Rectangle) / LDC (Polar)

Luminaire: Ledil CA14591_BROOKE-XW_(BXRA_ES_Rectangle)

Lamps: 1 x Bridgelux_BXRA_ES_Rectangle_(BXRA-330E2000-B-00)

_827.946lm@250mA_P=8.26425W_I=0.250A



NOTE: The typical divergence will be changed by different color, chip size and chip position tolerance. The typical total divergence is the full angle measured where the luminous intensity is half of the peak value.