

10119187 - X0J - XXXLF

LEAD-FREE DESIGNATION
ONLY WITH APPLICABLE
PLATING CODES

4-COLUMN
DIFFERENTIAL
SIGNAL

LETTER	PERFORMANCE-BASED PLATING (SEE NOTE 2)	
	TARGET APPLICATION	LEAD-FREE (LF)
B	TELCORDIA CO	NO
C	TELCORDIA UE	NO
D	TELCORDIA CO	YES
E	TELCORDIA UE	YES

NUMBER	GUIDE PIN STYLE, HEIGHT
0	STANDARD GUIDE PIN MACHINED, 31.6mm
4	STANDARD GUIDE PIN MACHINED, 25.7mm

MODULE DESCRIPTION	LETTER DESIGNATION REPRESENTED IN DASH NUMBER										BASE MODULE
LEFT POLARIZING GUIDANCE MODULE (SEE SHEET 3)	J	A	B	C	D	E	F	G	H		
RIGHT POLARIZING GUIDANCE MODULE (SEE SHEET 4)	Y	P	Q	R	S	T	U	V	W		
OPEN MODULE (TWO WALL) (SEE SHEET 2)	0 (ZERO)										
LEFT WALL MODULE (SEE SHEET 5)	L										
RIGHT WALL MODULE (SEE SHEET 6)	M										
FOUR WALL MODULE (SEE SHEET 7)	I (ONE)										

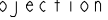

NUMBER	CONTACT MATING WIPE LENGTH		COMPLIANT PIN DRILL SIZE
	SIGNAL	GROUND	
1	2	4	Ø0.55 [0.0217"]
2	3	4	Ø0.55 [0.0217"]
3	2	4	Ø0.45 [0.0177"]
4	3	4	Ø0.45 [0.0177"]
5	2	3	Ø0.55 [0.0217"]
6	3	3	Ø0.55 [0.0217"]
7	2	3	Ø0.45 [0.0177"]
8	3	3	Ø0.45 [0.0177"]

TABLE 1: OPTIONAL PCB HOLE SIZE (SEE NOTE 11)

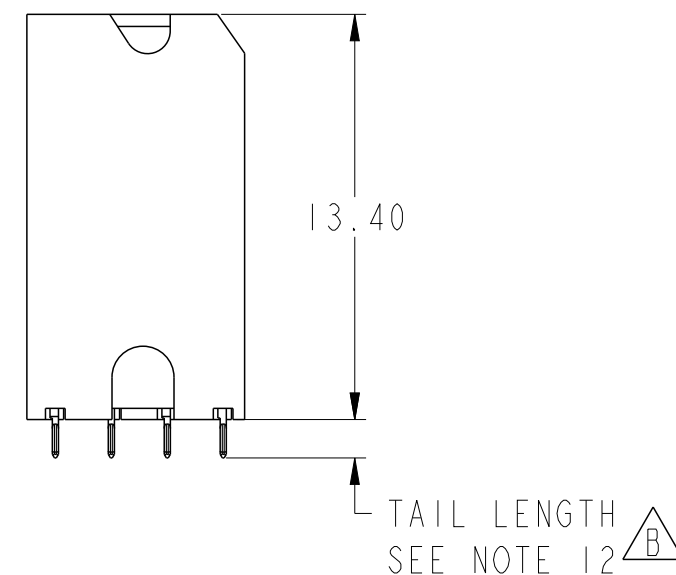
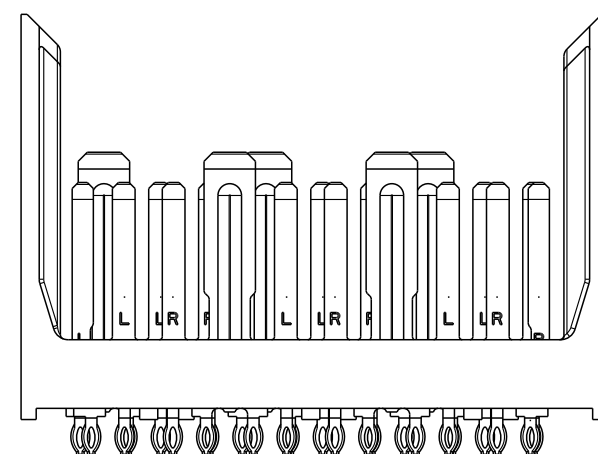
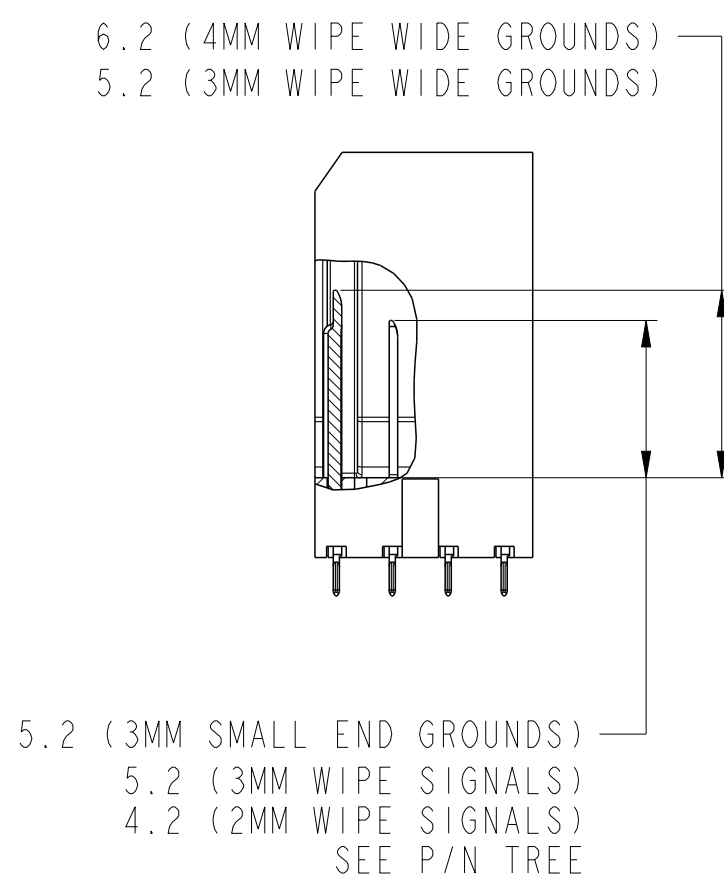
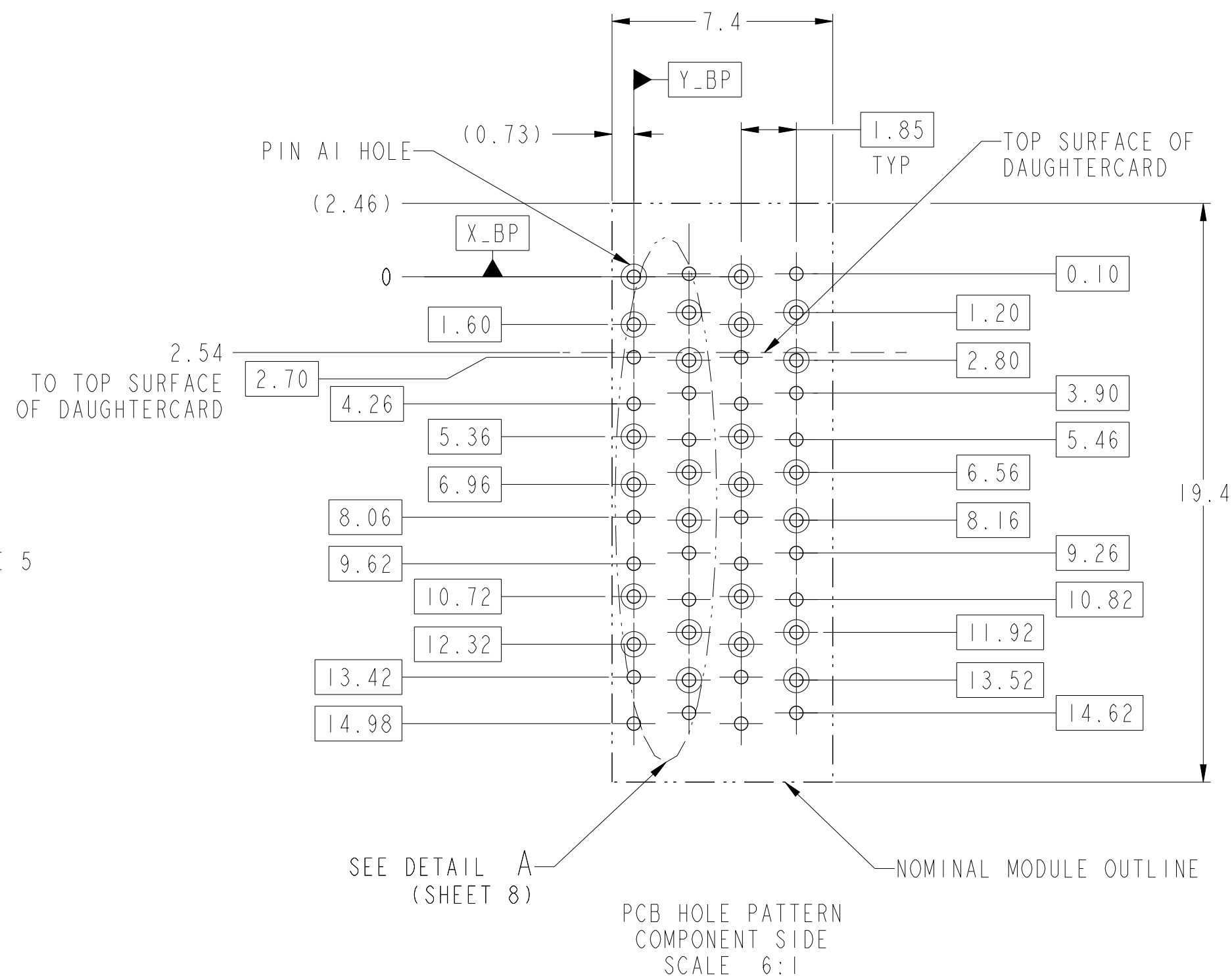
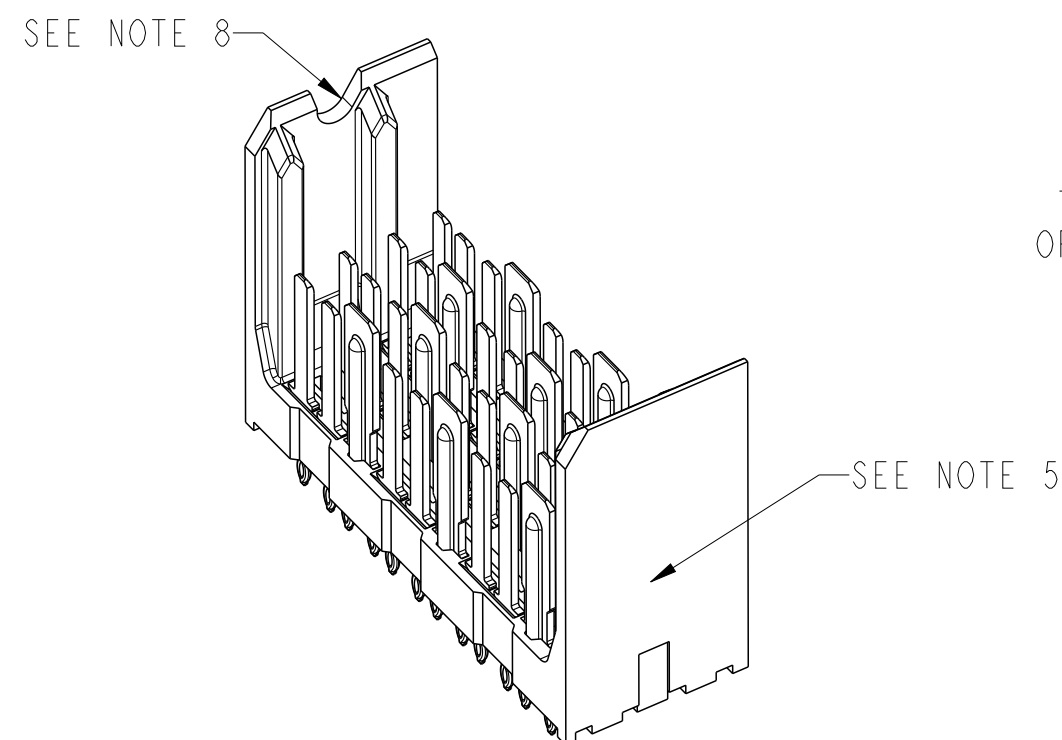
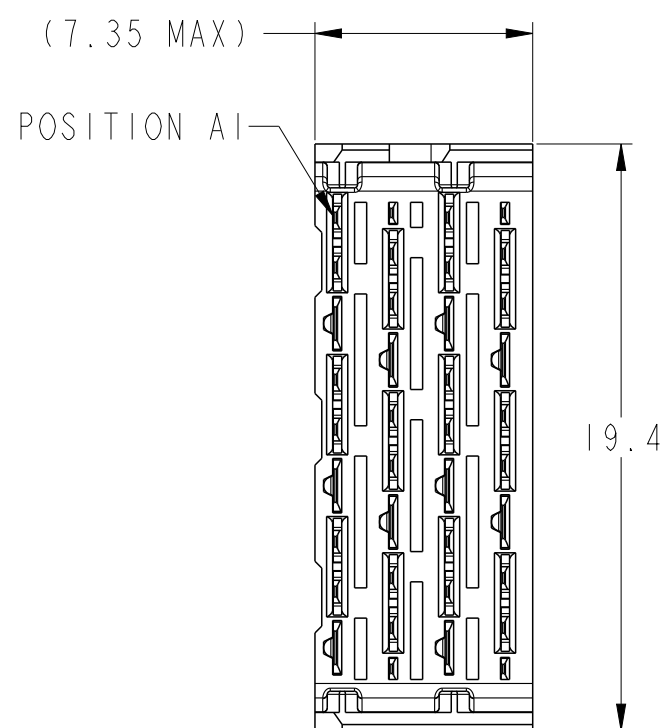
	GROUNDED	UNGROUNDED
FINISHED	Ø2.35-2.55	Ø2.35-2.55
PAD	Ø5.50	N/A
PLATED	YES	NO
DRILL (mm/in)	2.58/.1015	2.44/.096




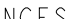

TABLE 2: OPTIONAL SCREW TYPE (SEE NOTE 10)

SCREW P/N	DESCRIPTION	BOARD THICKNESS
10091790-002LF	#2.56 X .375" PHILIPS PANHEAD W/SQ CONICAL WASHER	1.60 - 5.00
10091790-003LF	#2.56 X .500" PHILIPS PANHEAD W/SQ CONICAL WASHER	5.00 - 10.00

spec ref		-	dr		Roger Ng	2011/11/22	projection		MM		size	A2	scale	4:1	
tolerance std		-	eng		Sandar Soe	2014/10/02					ecn no	ELX-S-18843-1			
ASME Y14.5		TOLERANCES UNLESS OTHERWISE SPECIFIED	chr		-	-					Released				
surface		✓	appr		Chen-Hong Tan	2014/12/10	product family		XCEDE	rel level		10119187		rev	B
linear		0.X ±0.2 0.XX ±0.10 0.XXX ±0.050	FCI		title		MODULE ASSEMBLY VERTICAL HEADER 4 COLUMN, 3 PAIR				dwg no				
angular		0° ±2°	www.fci.com		cat. no.		-		Product - Customer Drw				sheet 1 of 8		

OPEN (2- WALL) MODULE

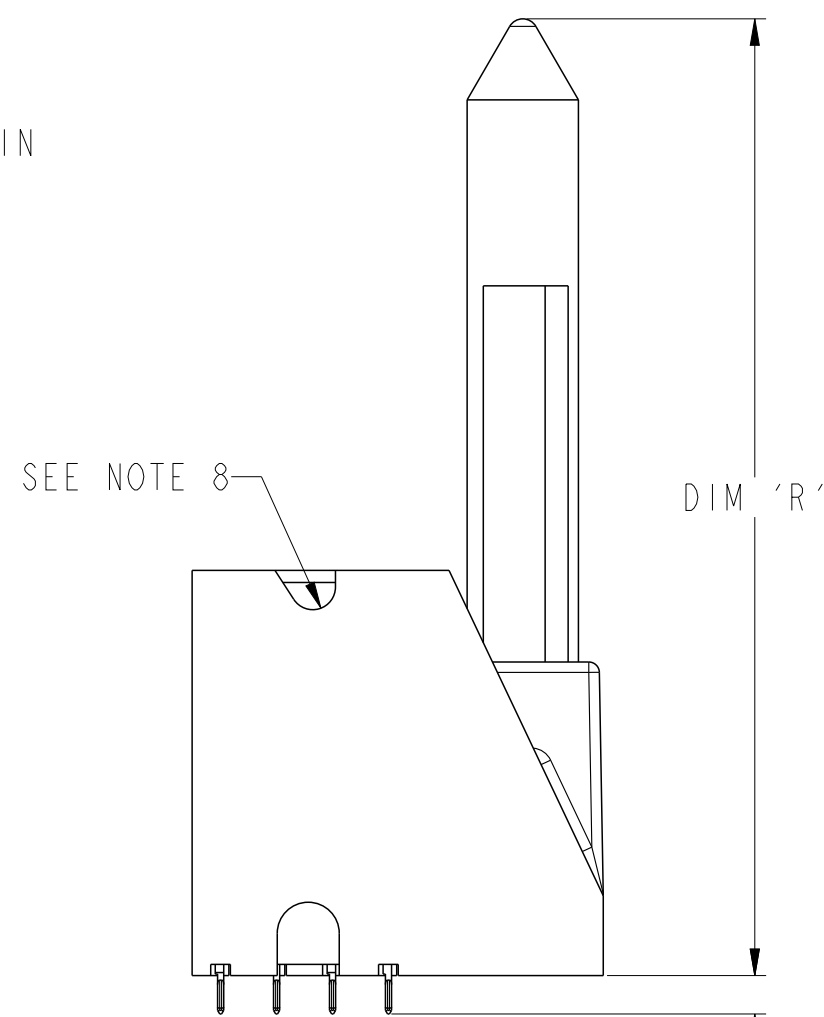
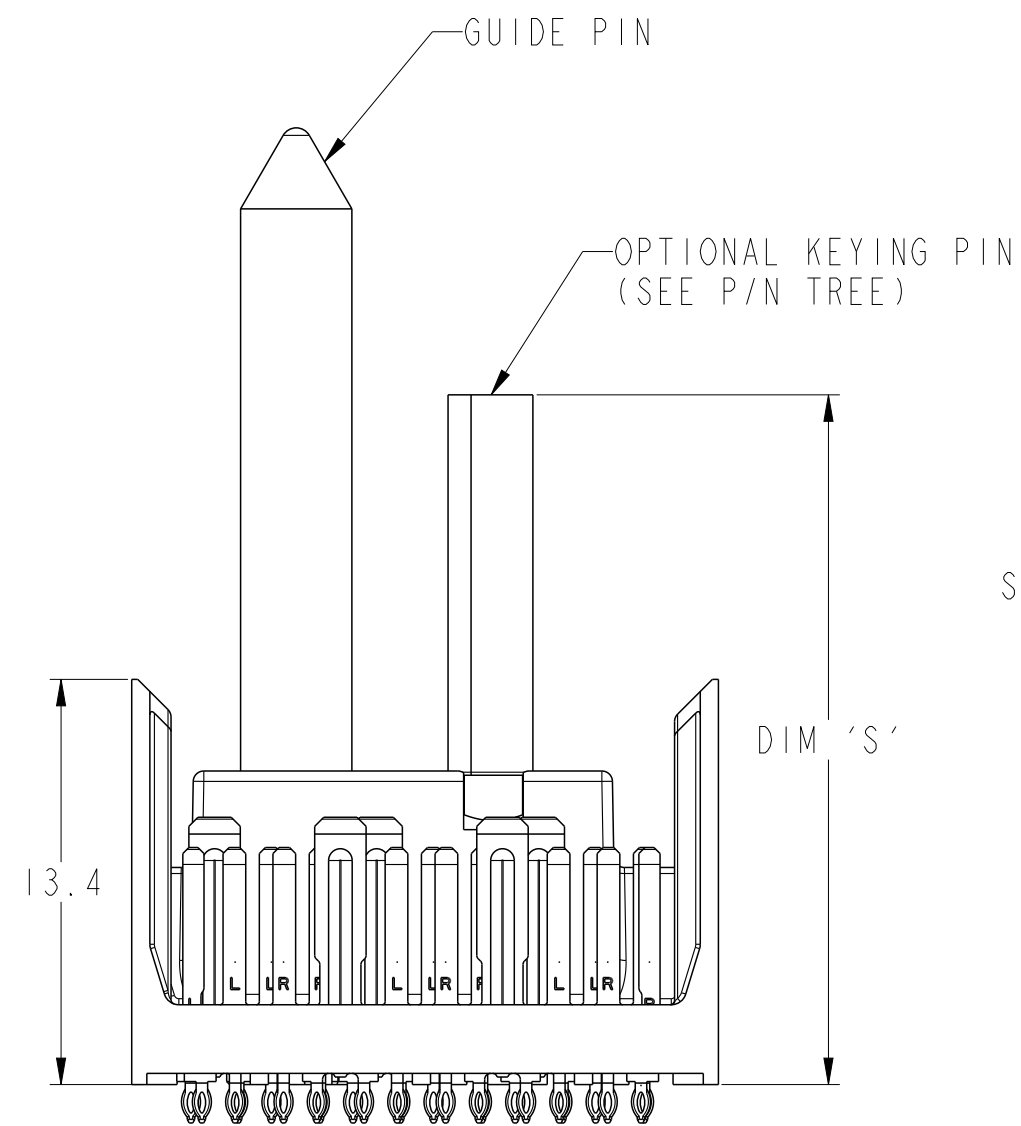
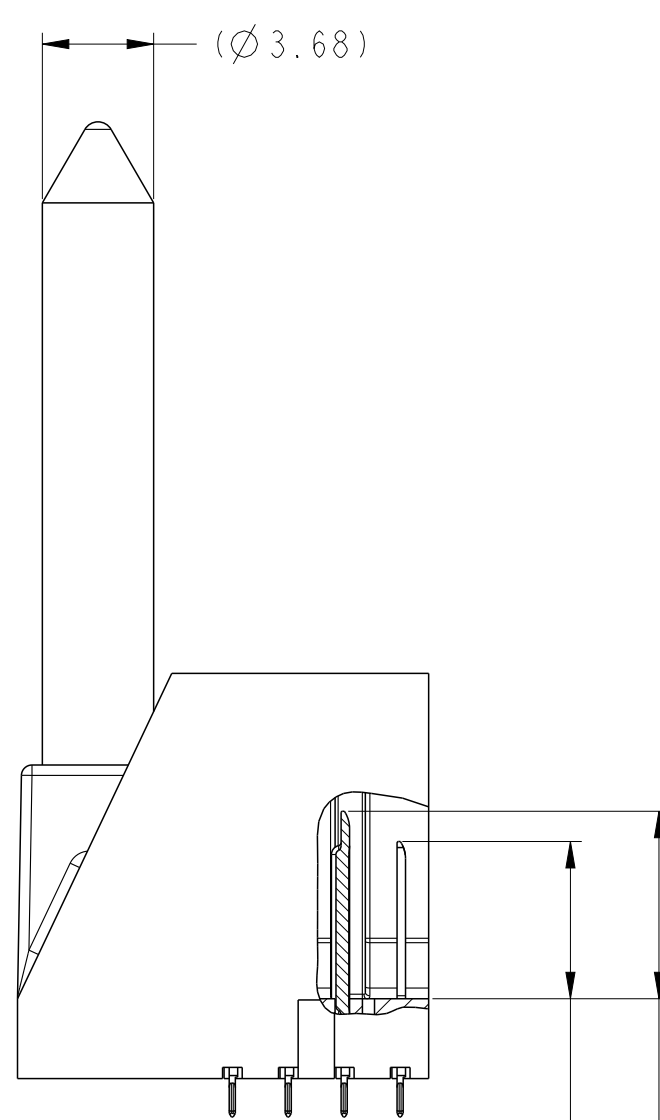
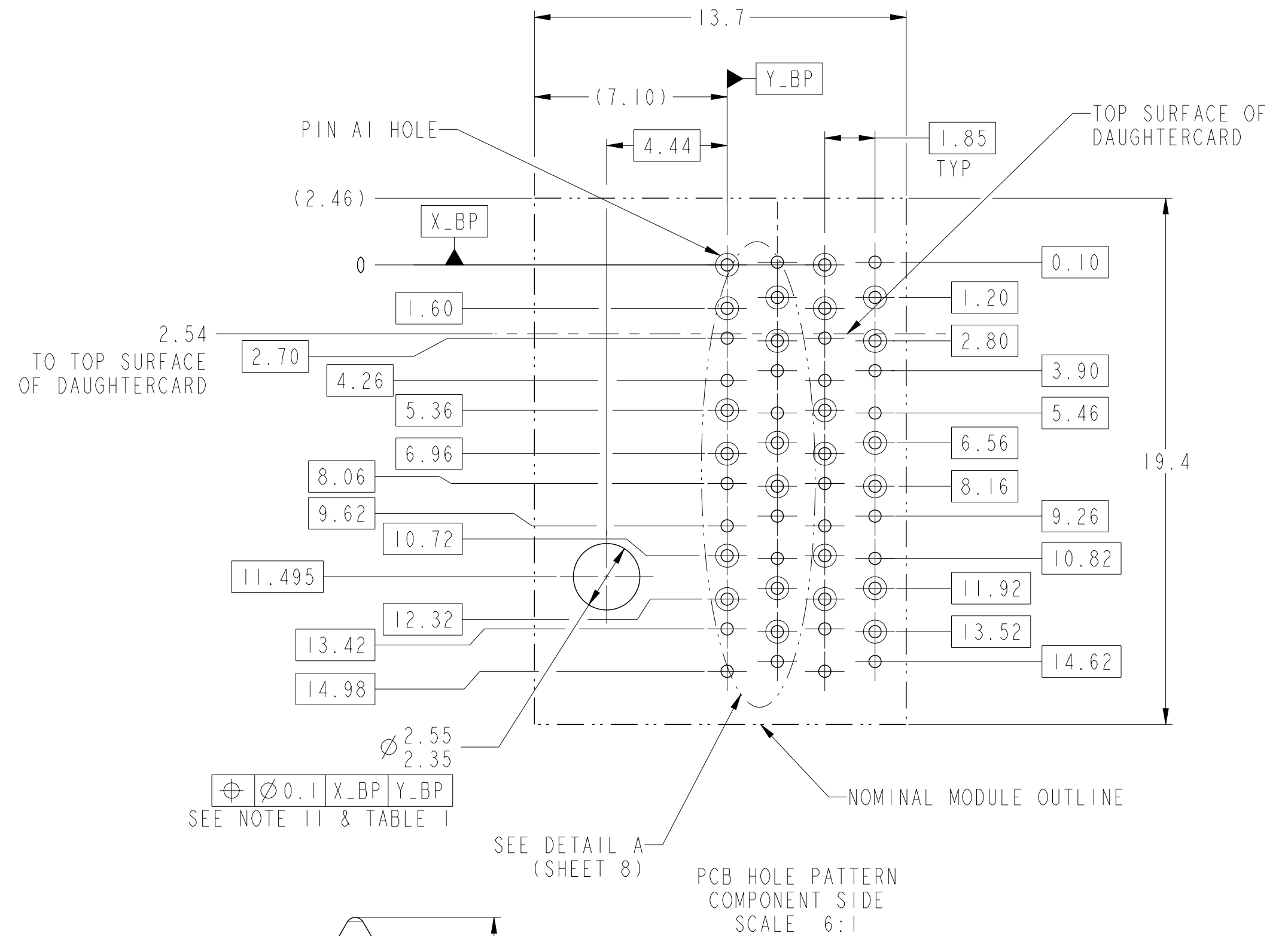
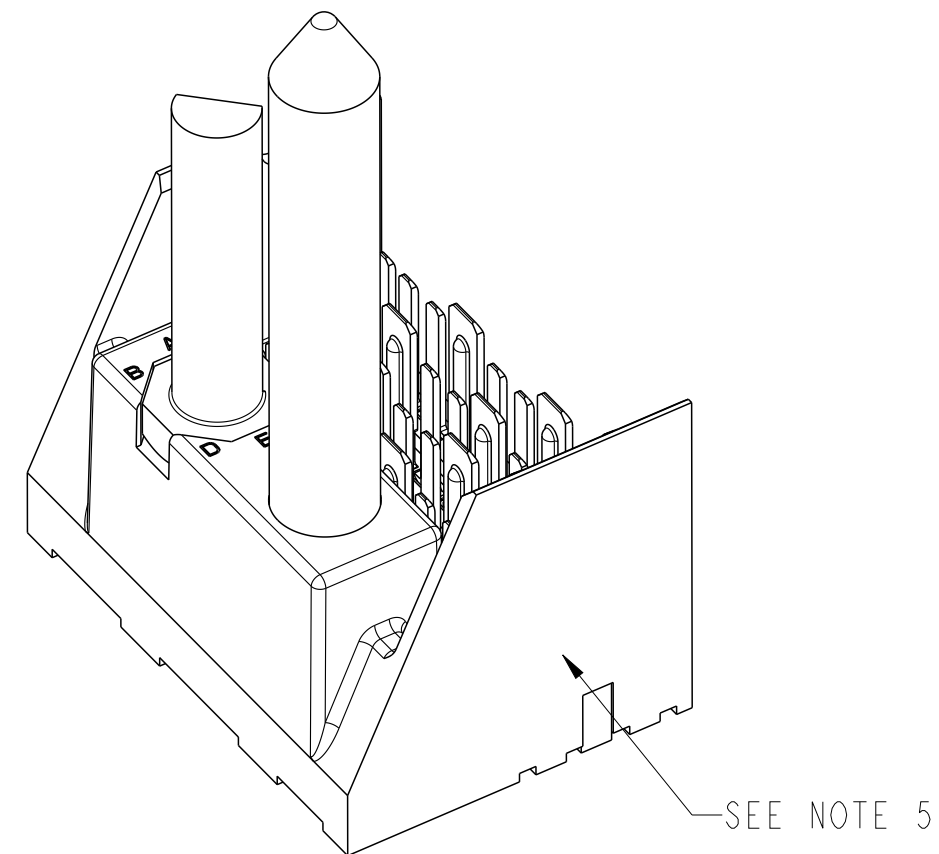
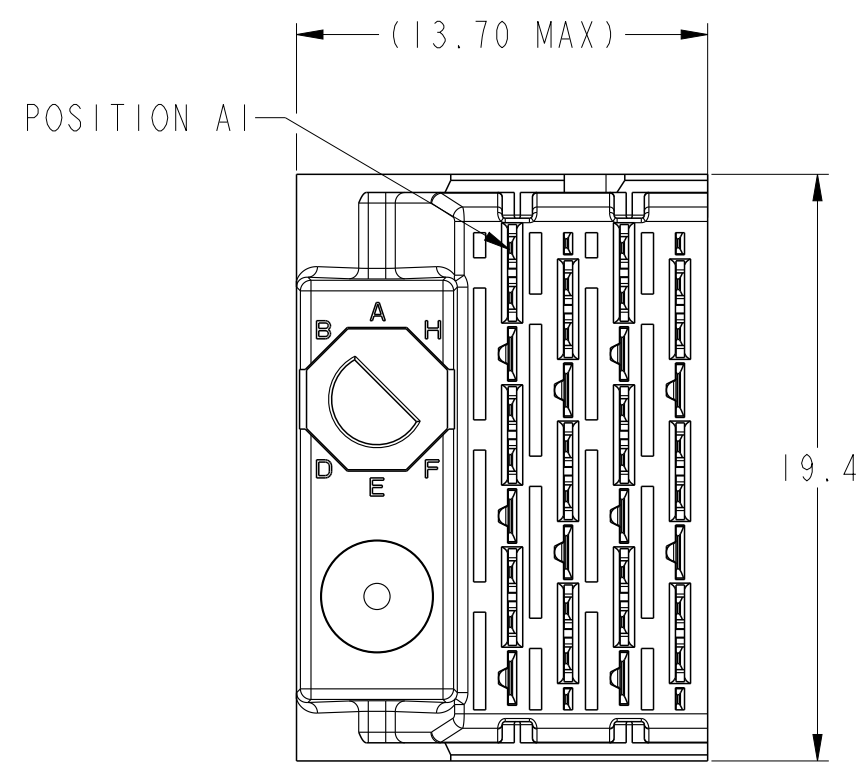


spec ref		-		dr		Roger Ng		2011/11/22		projection				MM		size		A2		scale		4:1	
tolerance std		-		eng		Sandar Soe		2014/10/02						ecn no		ELX-S-18843-1		rel level		Released			
ASME Y14.5		TOLERANCES UNLESS OTHERWISE SPECIFIED		chr		-		-															
				appr		Chen-Hong Tan		2014/12/10															
surface				linear		0.X		±0.2				title		MODULE ASSEMBLY		dwg no		10119187		rev		B	
				0.XX		±0.10																	
				0.XXX		±0.050																	
ASME Y14.5		angular		0°		±2°		www.fci.com		cat. no.		-		Product - Customer Drw		sheet 2 of 8							

PDS: Rev :B

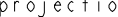


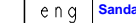
STATUS:Released

Printed: Dec 10, 2014

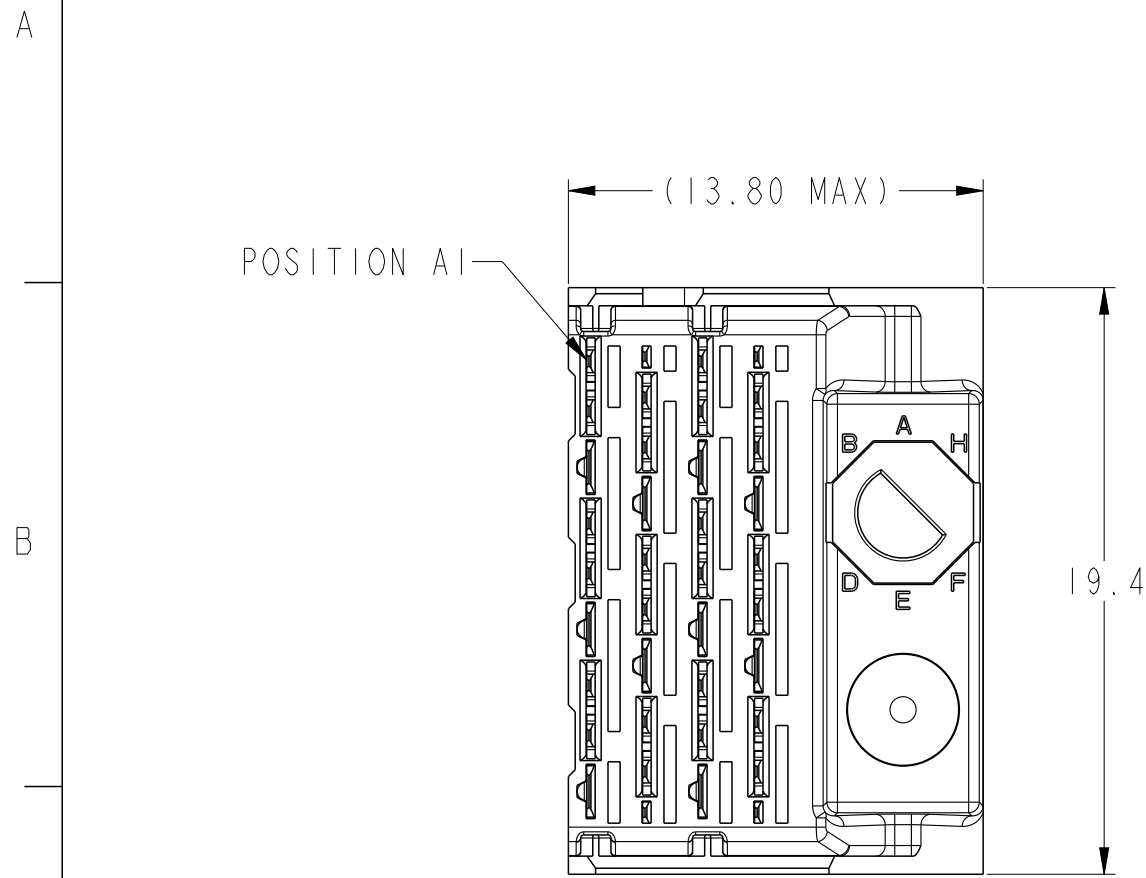


ASSEMBLY BASE CONFIGURATION END DASH NO.	GUIDE PIN	POLARIZING KEY
	DIM 'R'	DIM 'S'
-X0X	31.6mm	22.8mm
-X4X	25.7mm	20.0mm

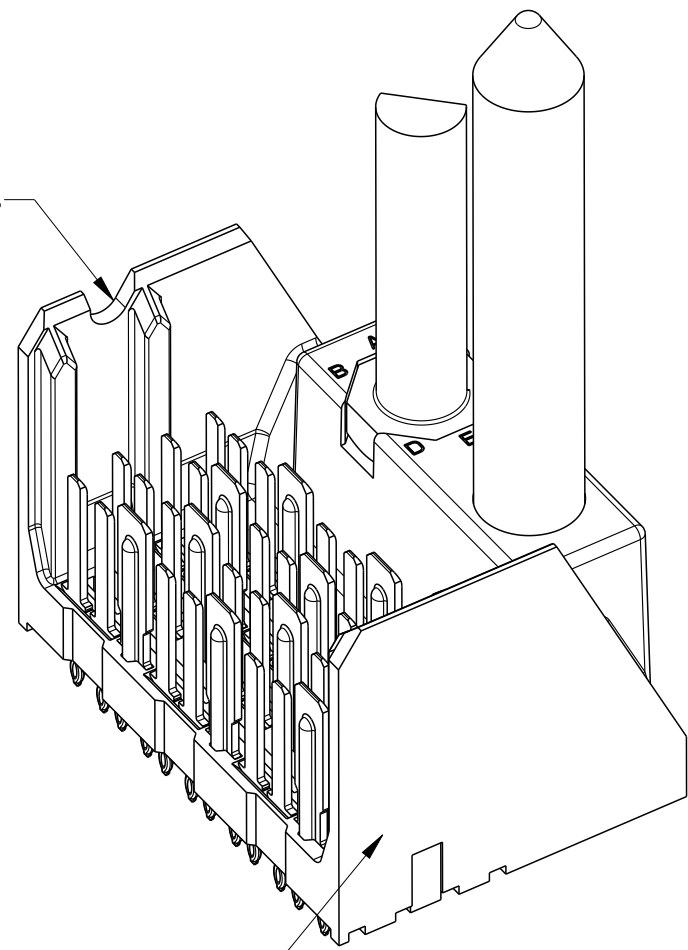
— TAIL LENGTH \triangle
SEE NOTE 12 B

spec ref		-		dr		Roger Ng		2011/11/22						size		scale									
tolerance std		-		eng		Sandar See		2014/10/02						A2		4:1									
ASME Y14.5		TOLERANCES UNLESS OTHERWISE SPECIFIED		chr		-		-		appr		Chen-Hong Tan		2014/12/10		product family		XCODE		ecn no		ELX-S-18843-1			
																				rel level		Released			
surface				linear		0.X		±0.2				title		MODULE ASSEMBLY		VERTICAL HEADER 4 COLUMN, 3 PAIR		dwg no		10119187		rev		B	
				0.XX		±0.10																			
				0.XXX		±0.050																			
ASME Y14.5		angular		0°		±2°		www.fci.com		cat. no.		-		Product - Customer Drw		sheet 3 of 8									

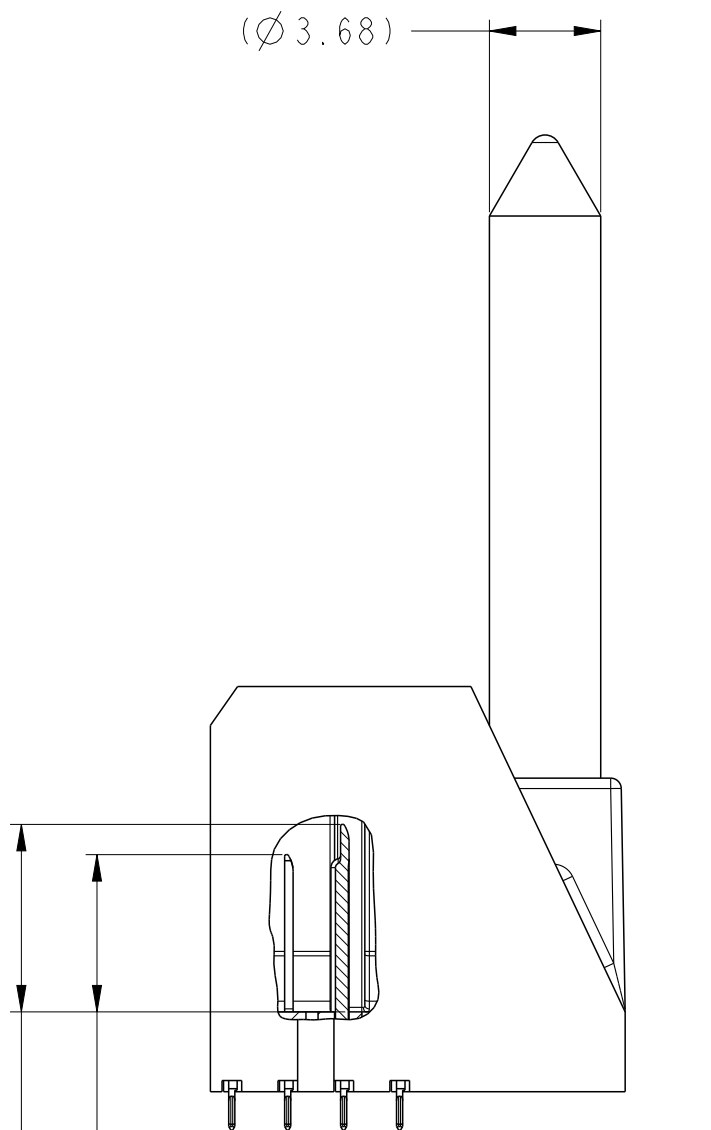
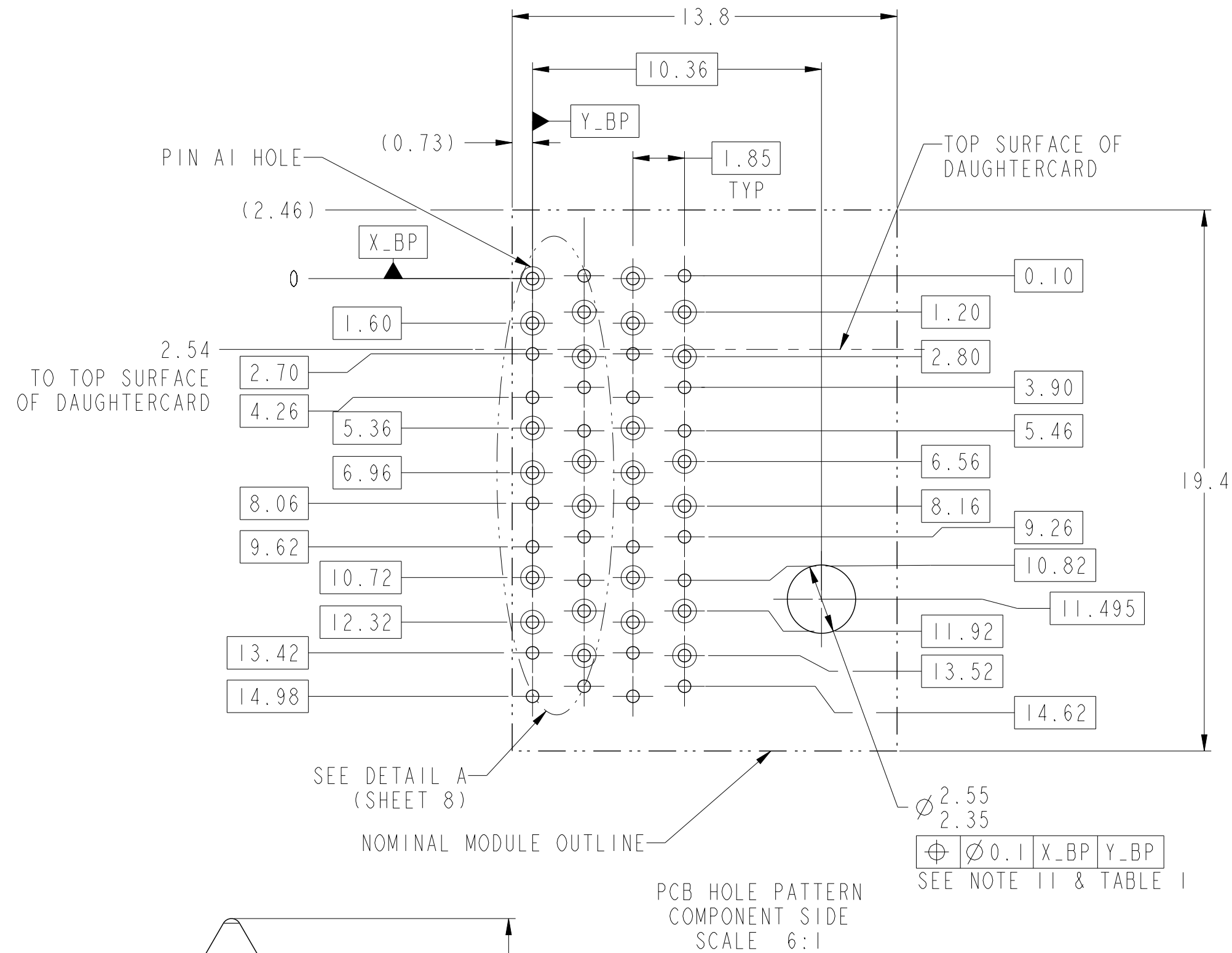
RIGHT POLARIZING/GUIDE MODULE



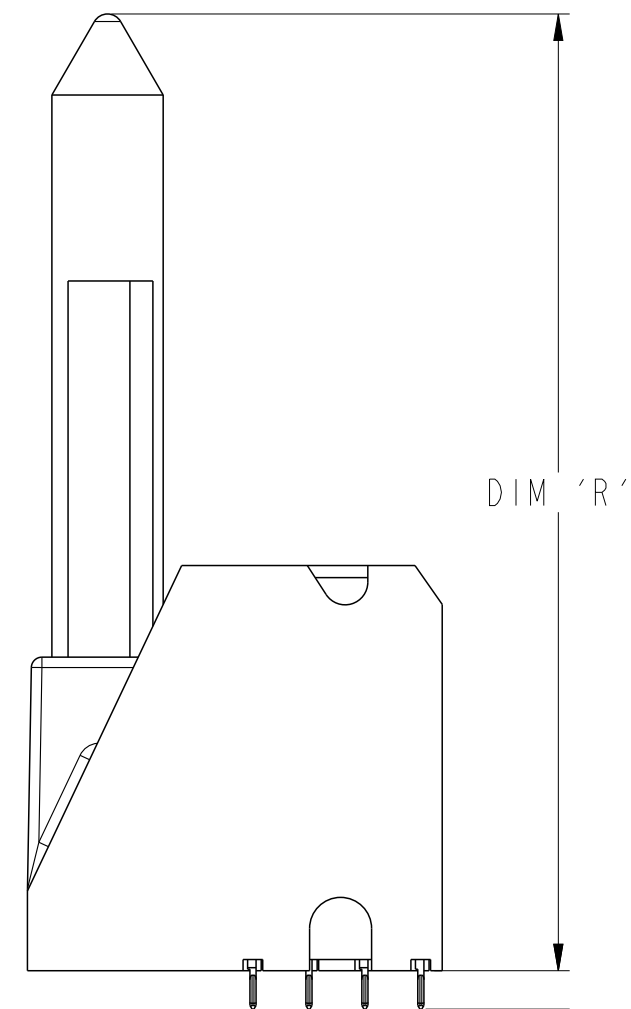
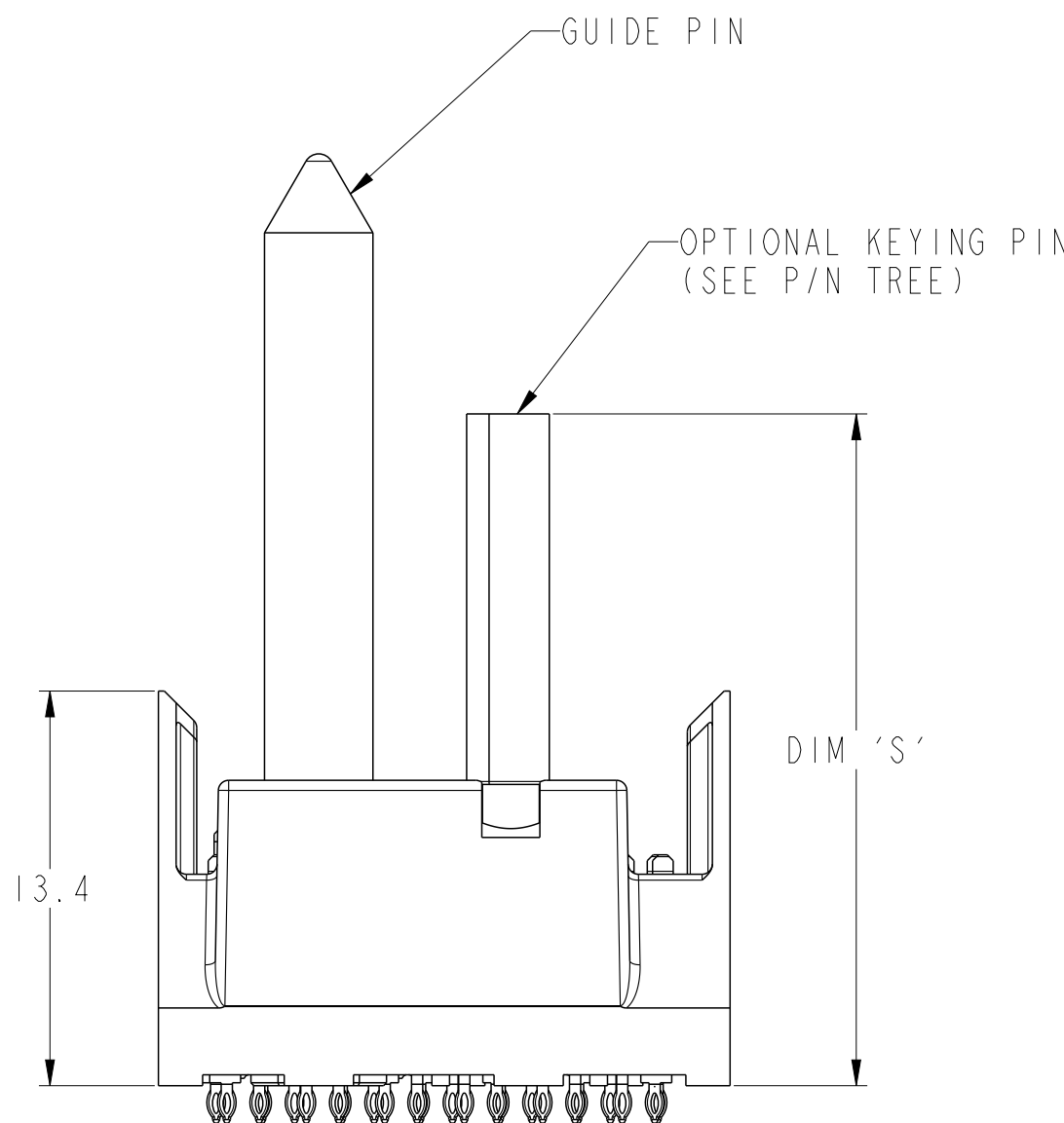
SEE NOTE 8



SEE NOTE 5



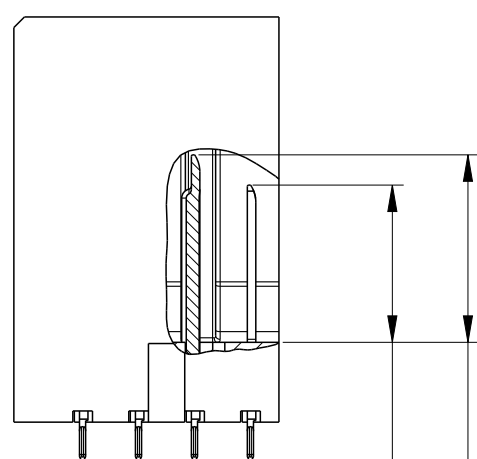
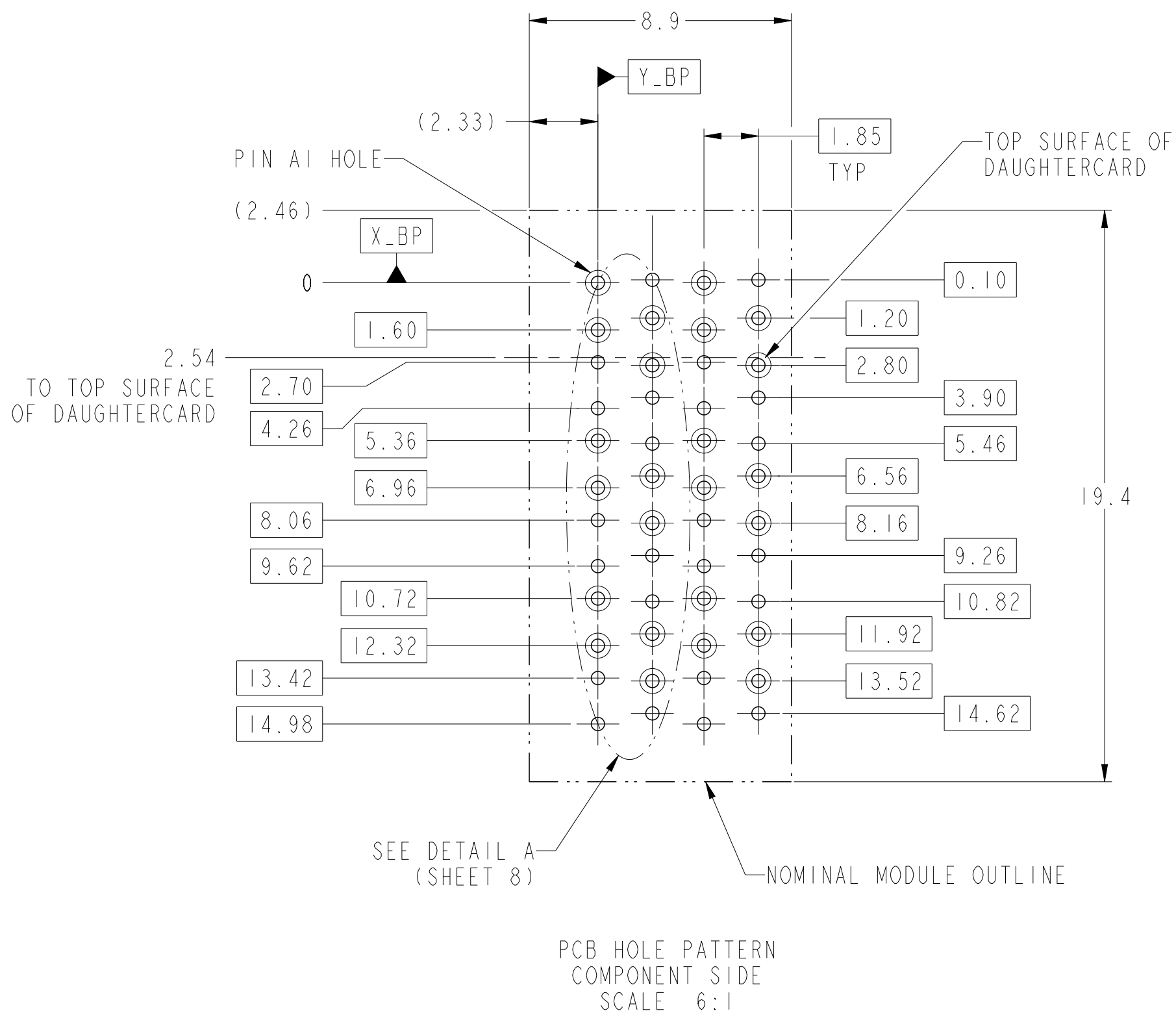
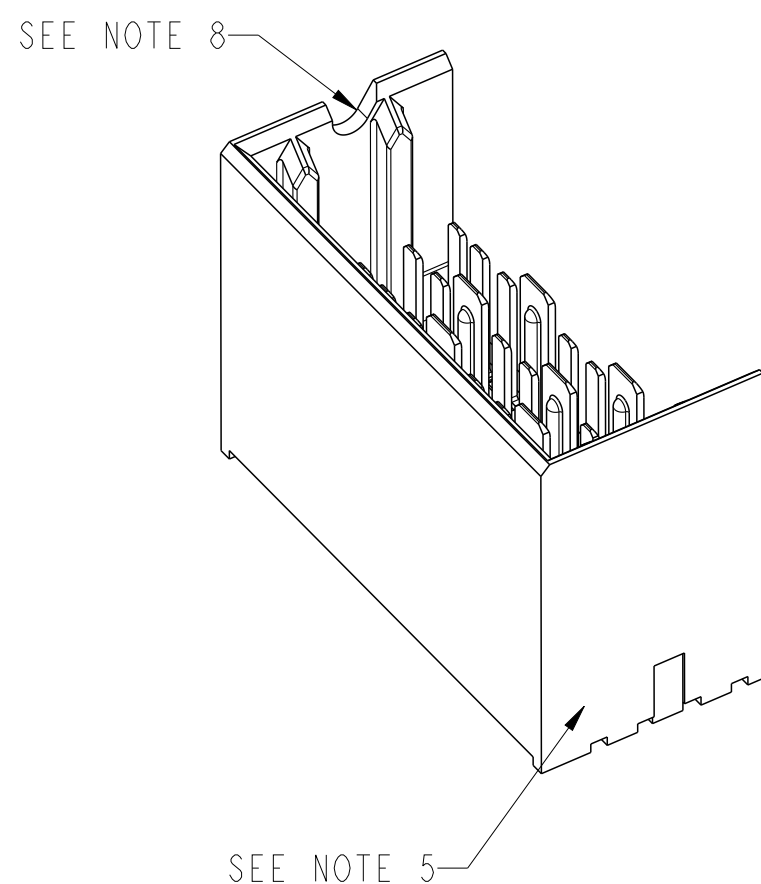
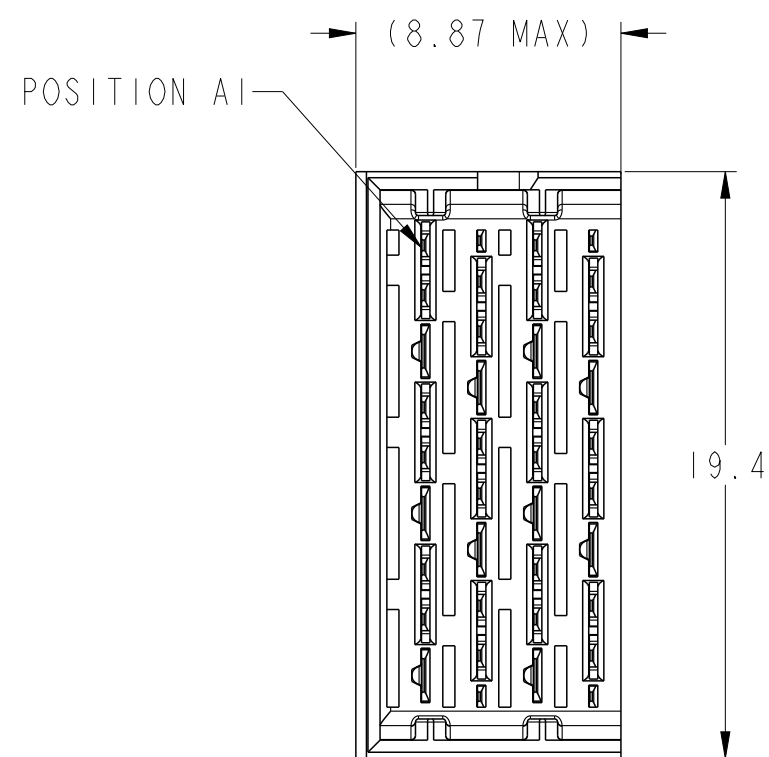
5.2 (3MM SMALL END GROUNDS)
5.2 (3MM WIPE SIGNALS)
4.2 (2MM WIPE SIGNALS)
SEE P/N TREE
6.2 (4MM WIPE WIDE GROUNDS)
5.2 (3MM WIPE WIDE GROUNDS)



ASSEMBLY BASE CONFIGURATION END DASH NO.	GUIDE PIN	POLARIZING KEY
	DIM 'R'	DIM 'S'
-X0X	31.6mm	22.8mm
-X4X	25.7mm	20.0mm

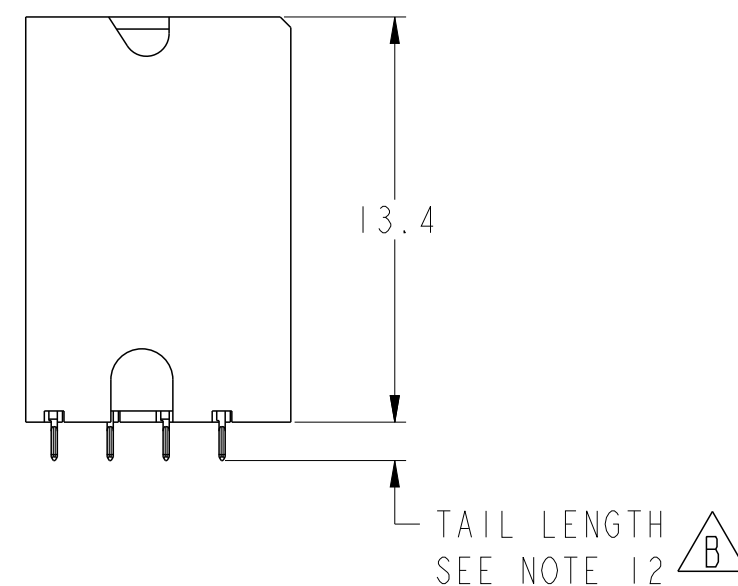
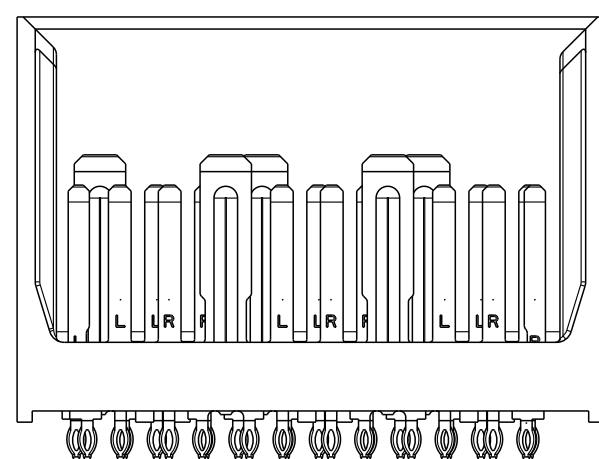
spec ref		-		dr		Roger Ng		2011/11/22		projection		MM		size		A2		scale		4:1			
tolerance std		-		eng		Sandar Soe		2014/10/02						ecn no		ELX-S-18843-1		rel level		Released			
ASME Y14.5		TOLERANCES UNLESS OTHERWISE SPECIFIED		chr		-		-															
				appr		Chen-Hong Tan		2014/12/10		product family				XCEDE									
surface		✓		linear		0.X		±0.2				title		MODULE ASSEMBLY		dwg no		10119187		rev		B	
				0.XX		±0.10																	
				0.XXX		±0.050																	
ASME Y14.5				angular		0°		±2°		www.fci.com		cat. no.		-		Product- Customer Drw		sheet 4 of 8					



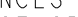

LEFT WALL MODULE



5.2 (3MM SMALL END GROUNDS)
5.2 (3MM WIPE SIGNALS)
4.2 (2MM WIPE SIGNALS)
SEE P/N TREE

6.2 (4MM WIPE WIDE GROUNDS)
5.2 (3MM WIPE WIDE GROUNDS)



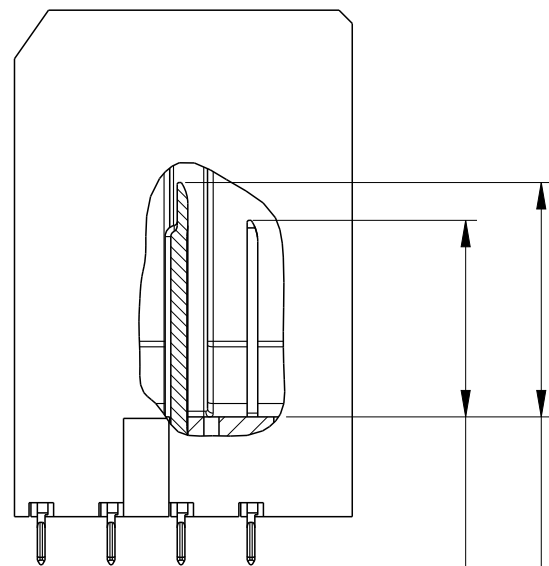
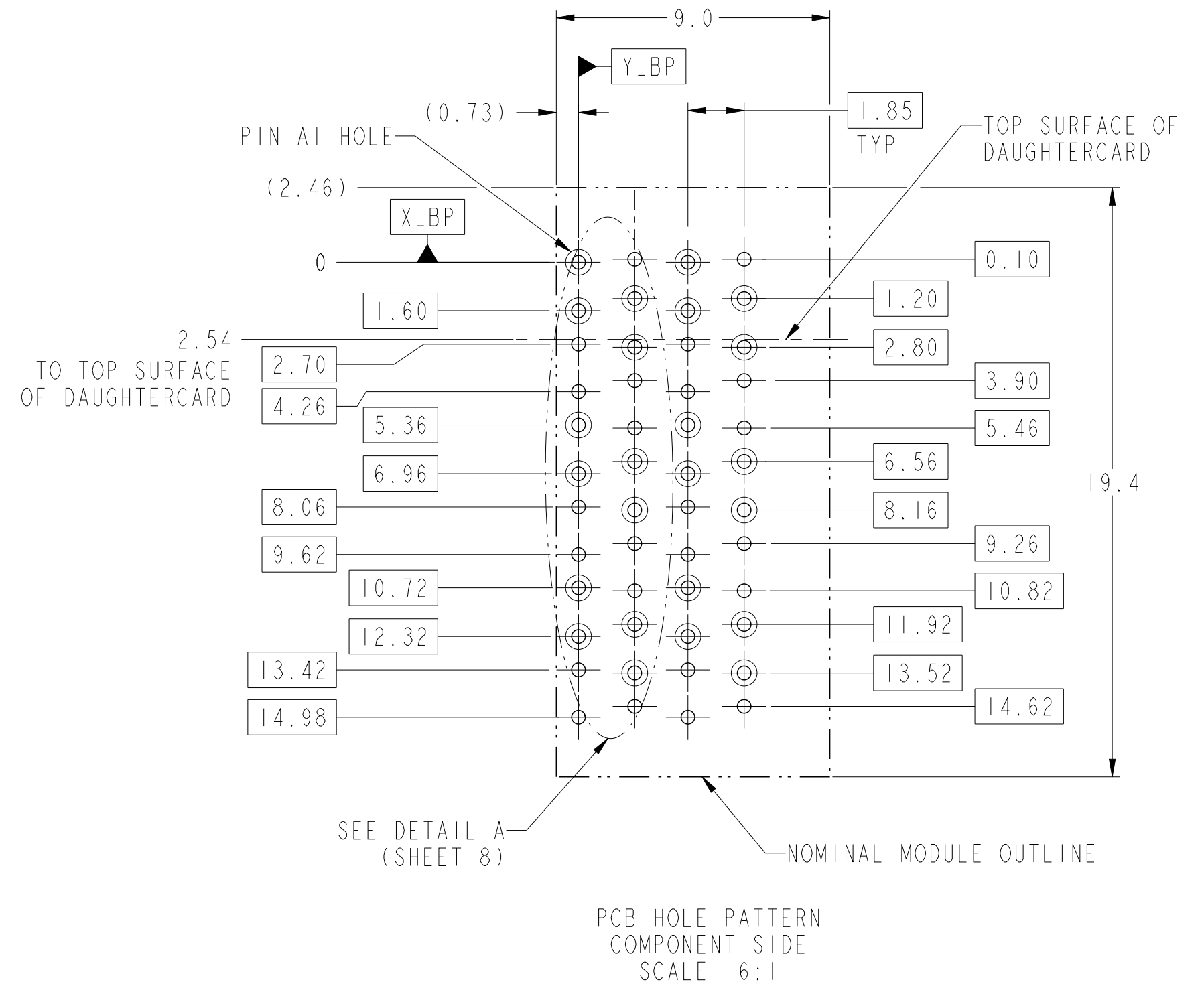
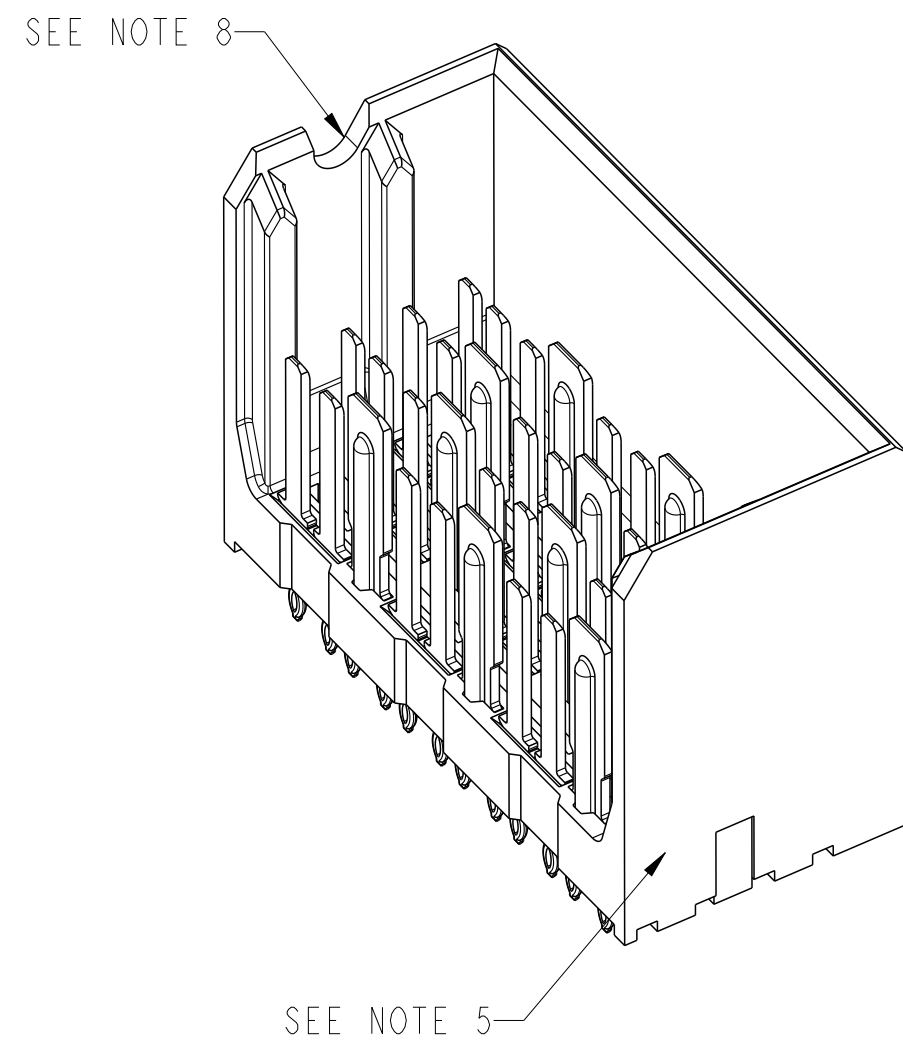
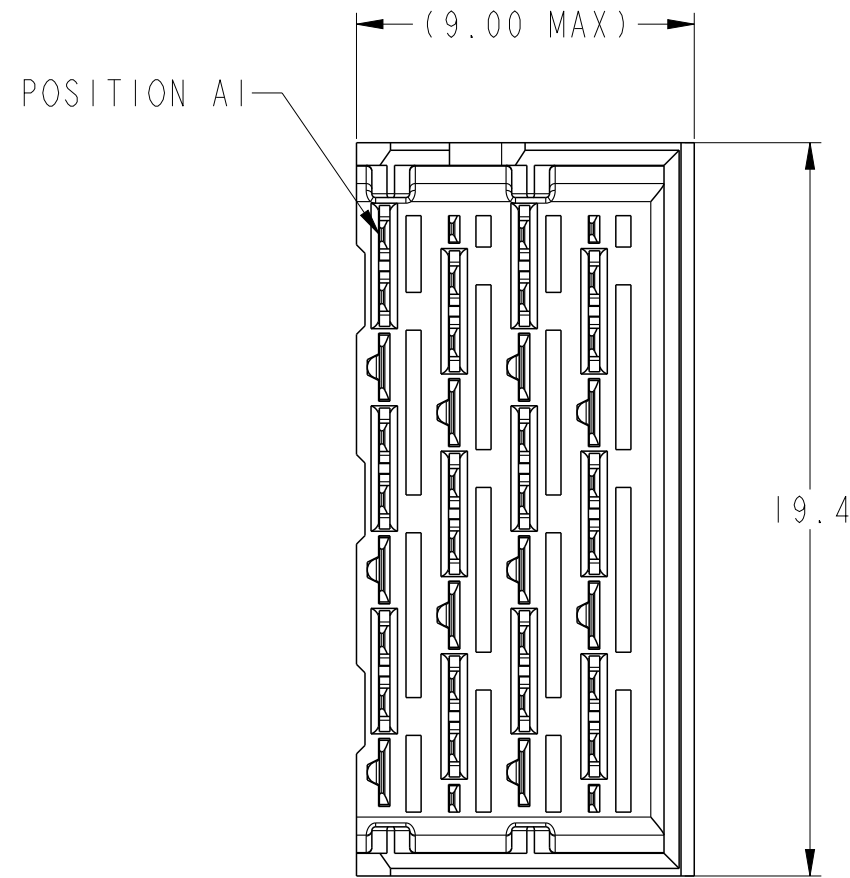
spec ref		-		dr		Roger Ng		2011/11/22		projection		MM		size		A2		scale		4:1			
tolerance std		-		eng		Sandar Soe		2014/10/02						ecn no		ELX-S-18843-1							
ASME Y14.5		TOLERANCES UNLESS OTHERWISE SPECIFIED		chr		-		-						rel level		Released							
				appr		Chen-Hong Tan		2014/12/10						product family		XCEDE							
surface				linear		0.X		±0.2				title		MODULE ASSEMBLY		dwg no		10119187		rev		B	
				0.XX		±0.10																	
				0.XXX		±0.050																	
ASME Y14.5				angular		0°		±2°		www.fci.com		cat. no.		-		Product - Customer Drw		sheet 5 of 8					

PDS: Rev :B

STATUS:Released

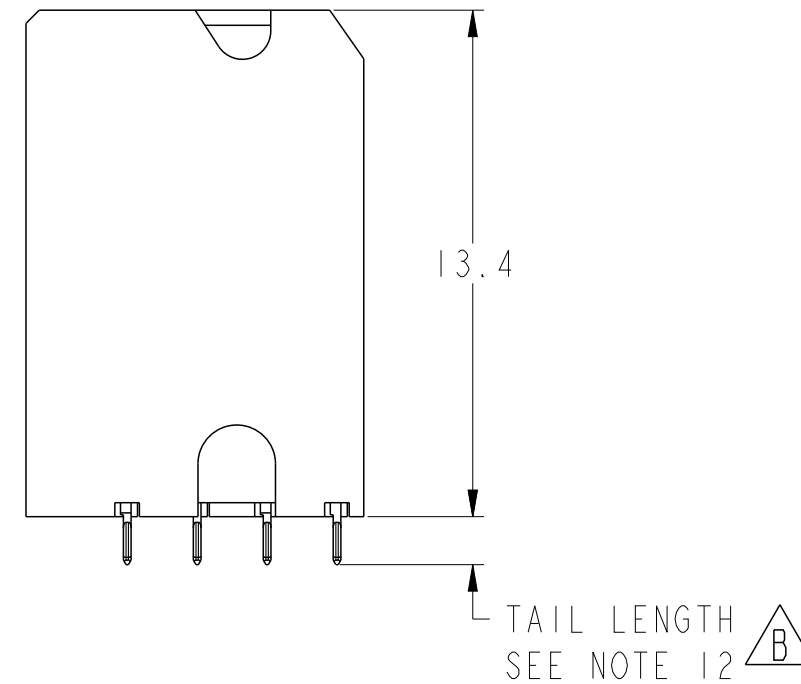
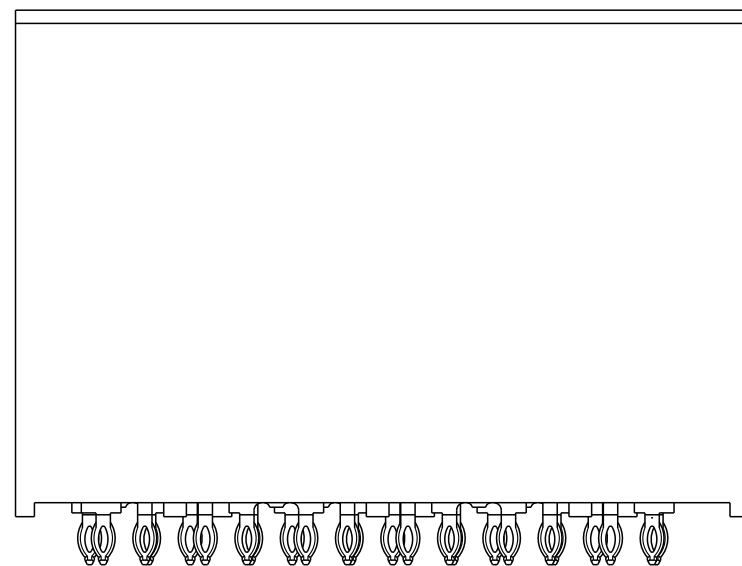
Printed: Dec 10, 2014



RIGHT WALL MODULE



5.2 (3MM SMALL END GROUNDS)
 5.2 (3MM WIPE SIGNALS)
 4.2 (2MM WIPE SIGNALS)
 SEE P/N TREE

6.2 (4MM WIPE WIDE GROUNDS)
 5.2 (3MM WIPE WIDE GROUNDS)



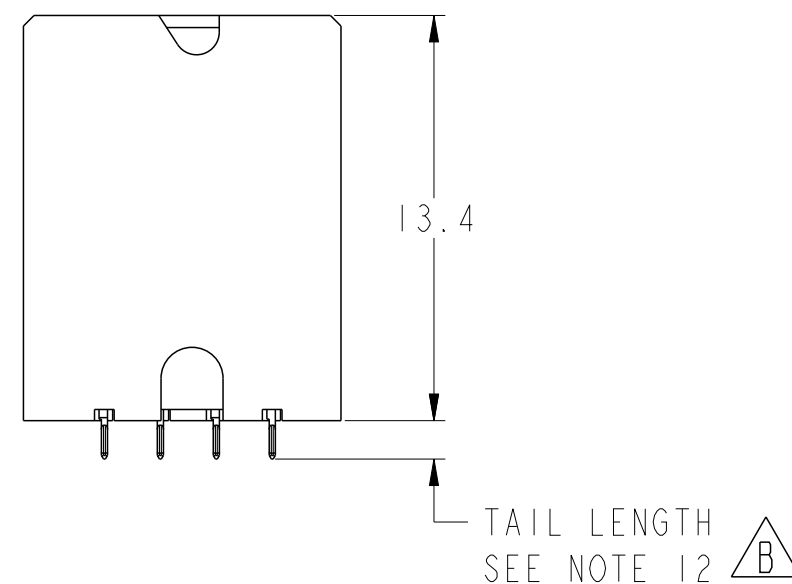
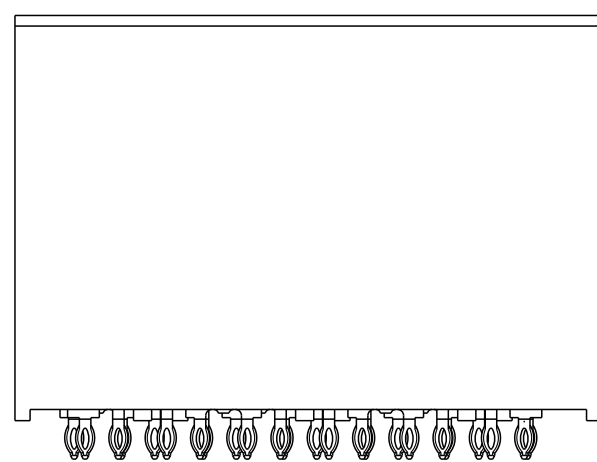
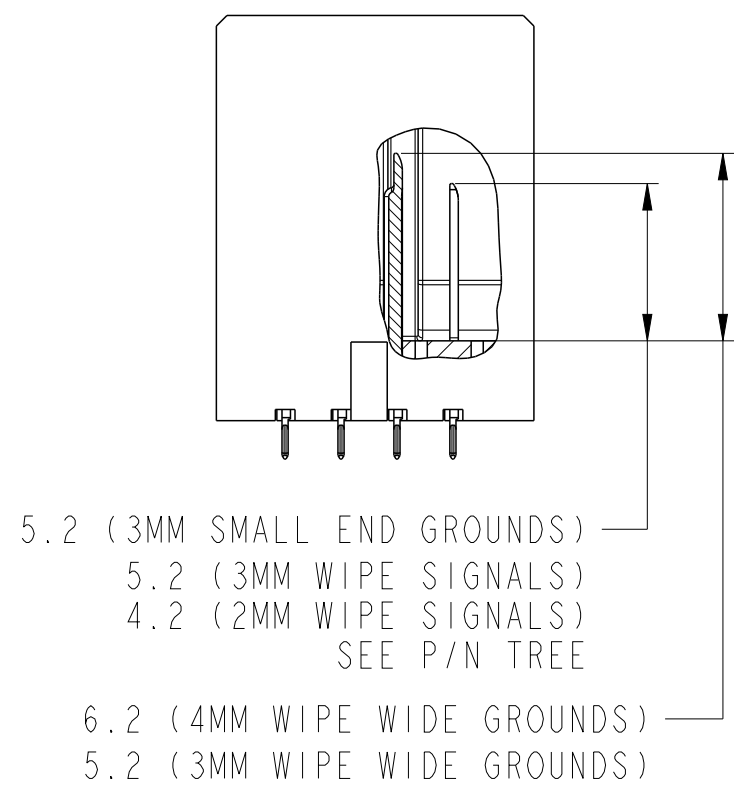
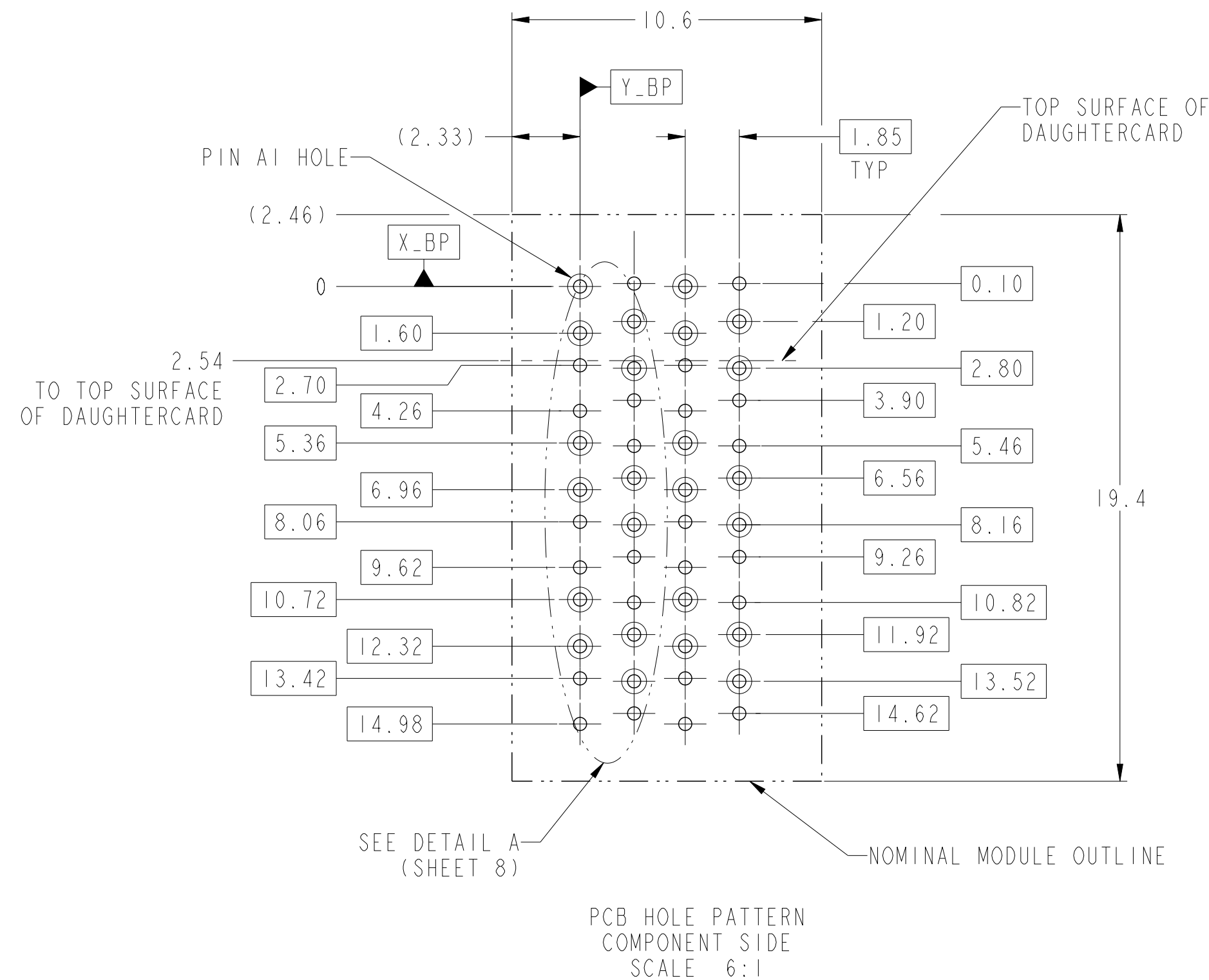
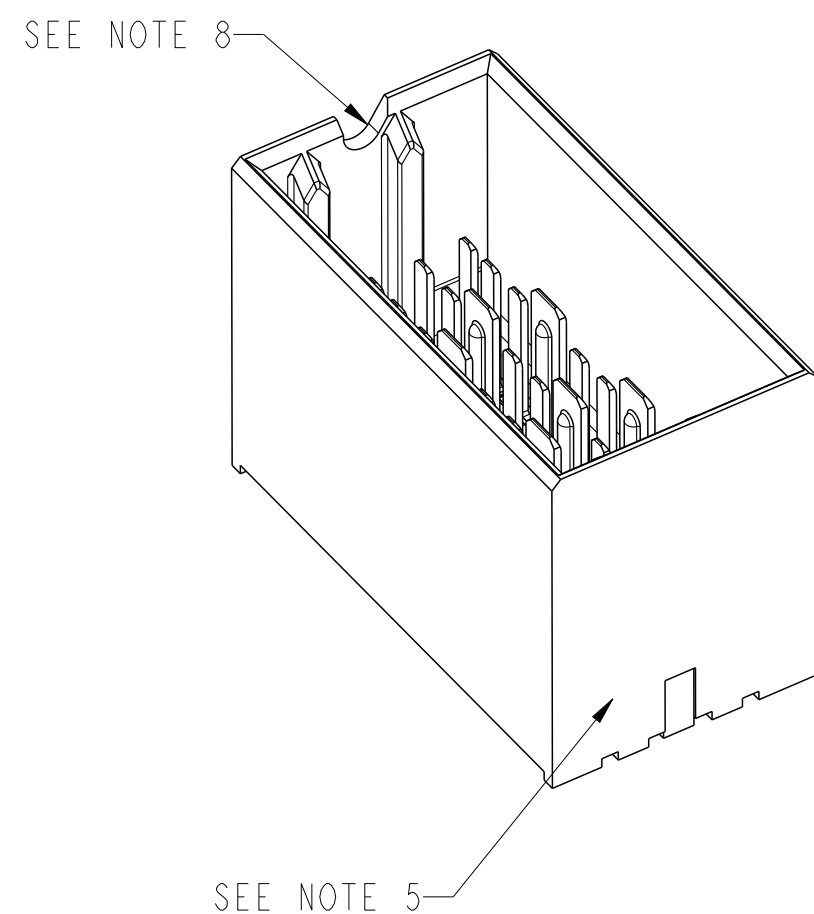
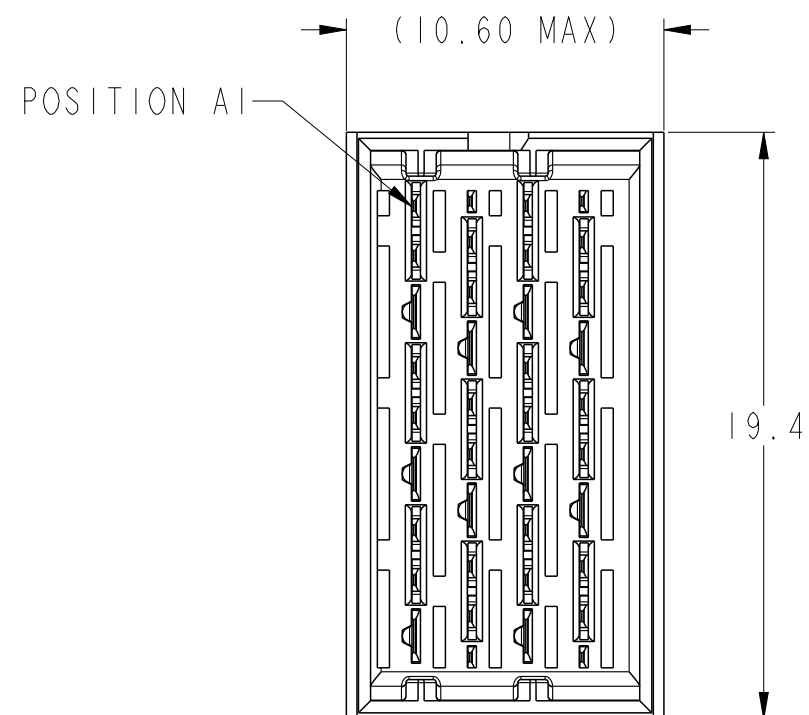
spec ref		-		dr		Roger Ng		2011/11/22		projection				size		A2		scale		4:1	
tolerance std		-		eng		Sandar Soe		2014/10/02				ecn no		ELX-S-18843-1							
ASME Y14.5		TOLERANCES UNLESS OTHERWISE SPECIFIED		chr		-		-				rel level		Released							
surface		✓		appr		Chen-Hong Tan		2014/12/10		product family		XCEDE		rev		B					
ASME Y14.5		linear		0.X		±0.2		FCI		title		MODULE ASSEMBLY		dwg no		10119187					
				0.XX		±0.10				VERTICAL HEADER 4 COLUMN, 3 PAIR											
		angular		0°		±2°		www.fci.com		cat. no.		-		Product - Customer Drw		sheet 6 of 8					

PDS: Rev :B

STATUS:Released

Printed: Dec 10, 2014

FOUR WALL MODULE



spec ref	-	dr	Roger Ng	2011/11/22	projection	MM	size	A2	scale	4:1
tolerance std	-	eng	Sandar Soe	2014/10/02	chr	-	ecn no	ELX-S-18843-1	rel level	Released
ASME Y14.5	TOLERANCES UNLESS OTHERWISE SPECIFIED	appr	Chen-Hong Tan	2014/12/10	product family	XCEDE	rel level	Released	rev	B
surface	linear	0.X	±0.2	0.XX	±0.10	0.XXX	±0.050	angular	0°	±2°
ASME Y14.5	angular	0°	±2°	www.fci.com	cat. no.	-	Product - Customer Drw	sheet 7 of 8		

PDS: Rev :B

STATUS:Released

Printed: Dec 10, 2014

NOTES:

- CONNECTOR MATERIALS
SHROUD: HIGH-TEMP THERMOPLASTIC, GRAY, UL94V-0
CONTACTS: HIGH PERFORMANCE COPPER ALLOY
- CONTACT PLATING:

SEPARABLE INTERFACE: PERFORMANCE-BASED PLATING, QUALIFIED TO MEET THE REQUIREMENTS OF FCI PRODUCT SPECIFICATION GS-12-588, INCLUDING THE TELCORDIA GR-1217-CORE (NOVEMBER 1995) CENTRAL OFFICE (CO) OR UNCONTROLLED ENVIRONMENT (UE) TEST SEQUENCE AS NOTED IN P/N TREE.

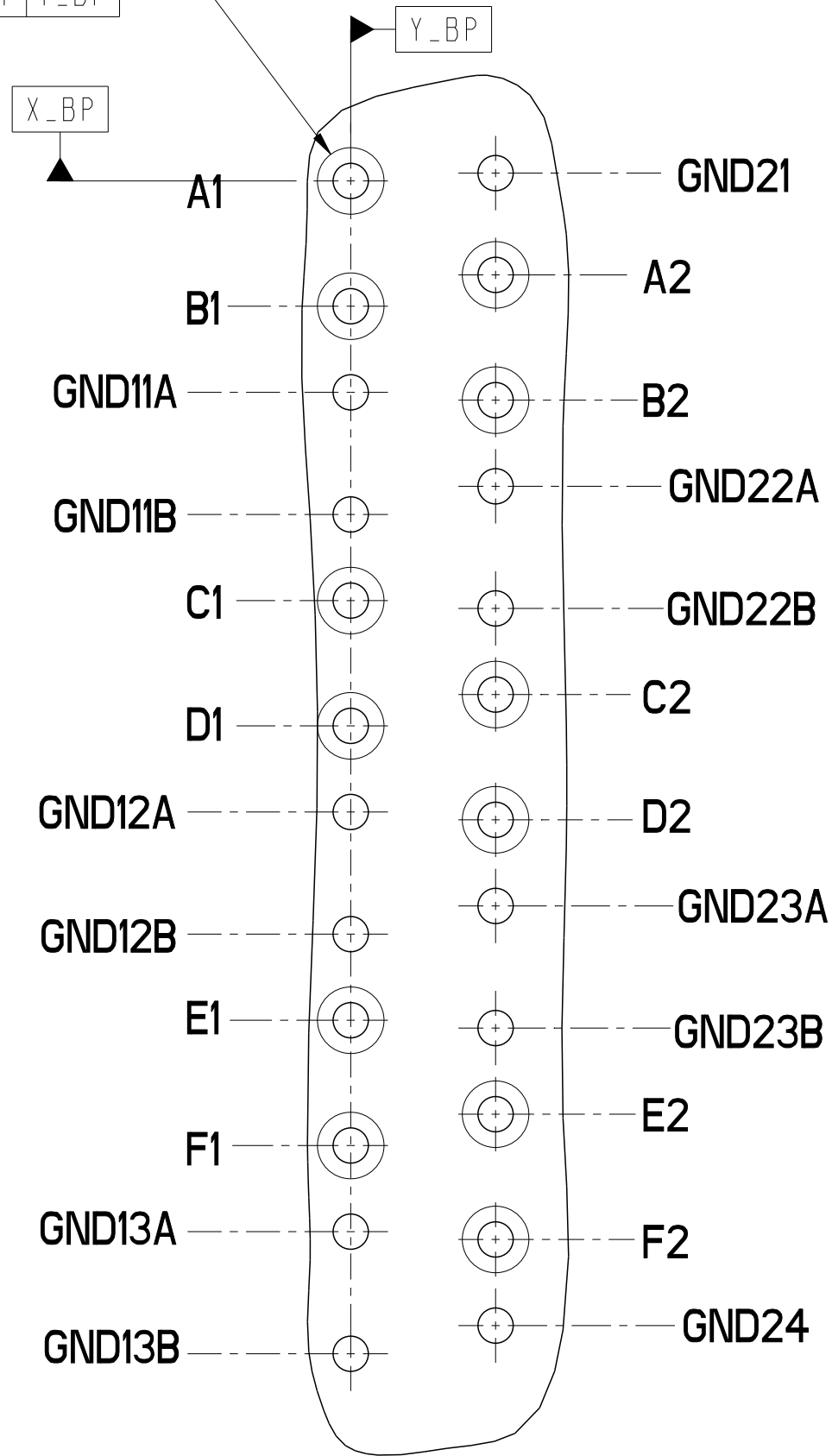
PRESS-FIT TAILS: TIN OVER NICKEL (LF), OR TIN-LEAD ALLOY OVER NICKEL (NON-LF). SEE P/N TREE.
- PRODUCT SPECIFICATION: GS-12-588
- APPLICATION SPECIFICATION: GS-20-121
- PRODUCT MARKING (PART NUMBER AND LOT CODE) ON THESE SURFACES.
- HOUSING MUST WITHSTAND EXPOSURE TO 260°C PEAK TEMPERATURE FOR 40 SECONDS IN A CONVECTION, INFRA-RED, OR VAPOR-PHASE REFLOW OVEN.
- PACKAGING MEETS GS-14-920 LEAD-FREE LABELING SPECIFICATION.
- NOTCH INDICATES "ROW A" SIDE OF CONNECTOR.
- SEE APPLICATION SPECIFICATION FOR ROUTING GUIDELINES, ADDITIONAL PTH GUIDELINES, MATED DIMENSIONS, GUIDE PN SELECTION, ETC.
- SCREW IS OPTIONAL AND ENGAGES WITH BOTTOM OF GUIDE-PIN FROM BENEATH THE PCB FOR ADDITIONAL GUIDE-PIN SUPPORT.
- OPTIONAL HOLE LOCATION FOR GROUNDED PIN OR ADDITIONAL GUIDE-PIN SUPPORT. SEE TABLE 1 ON SHEET 1 FOR ADDITIONAL DETAILS.
- TAIL LENGTH=1.3mm FOR Ø0.55[0.0217"]COMPLIANT PIN DRILL
TAIL LENGTH=1.5mm FOR Ø0.45[0.0177"]COMPLIANT PIN DRILL
- A SYMBOL WILL BE NEXT TO ANY DIMENSION, VIEW OR NOTE THAT HAS BEEN MODIFIED WITH THE CURRENT DRAWING REVISION.

TABLE 3: PTH AND PAD SIZES WITH REFERENCE TO COMPLIANT PIN DRILL

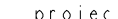
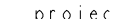
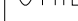

COMPLIANT PIN DRILL	PTH	PAD
Ø0.55 [0.0217"]	Ø0.45±0.05	Ø0.85
Ø0.45 [0.0177"]	Ø0.36±0.05	Ø0.75

REFER TO TABLE 3 FOR PTH, DRILL & PAD SIZES

Ø	Ø0.10	X_BP	Y_BP
---	-------	------	------



DETAIL A
SCALE 12:1

spec ref		-		dr	Roger Ng	2011/11/22	projection		MM		size	A2	scale	4:1	
tolerance std		-		eng	Sandar Soe	2014/10/02					ecn no	ELX-S-18843-1			
ASME Y14.5		TOLERANCES UNLESS OTHERWISE SPECIFIED		chr	-	-					rel level			Released	
				appr	Chen-Hong Tan	2014/12/10	product family		XCEDE						
surface		linear	0.X	±0.2		title	MODULE ASSEMBLY VERTICAL HEADER 4 COLUMN, 3 PAIR				dwg no	10119187		rev	B
			0.XX	±0.10											
			0.XXX	±0.050											
ASME Y14.5		angular	0°	±2°	www.fci.com	cat. no.	-	Product - Customer Drw				sheet 8 of 8			