

REVISIONS					
P	LTR	DESCRIPTION	DATE	DWN	APVD
	A	REVISED PER ECR-16-002640	10MAR2016	EW	EW

1. PARTS COMPLY TO AMP SOLDERABILITY SPECIFICATION 109-11-2.

2. CIRCUIT IDENTIFICATION CHARACTERS ARE ADJACENT TO THE INDICATED CAVITIES, BUT LOCATION AND ORIENTATION MAY DIFFER FROM PRINT.

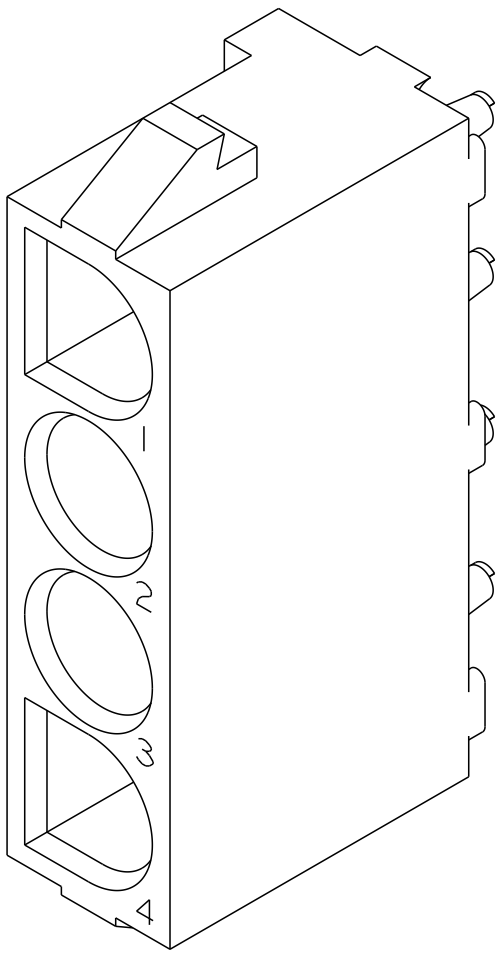
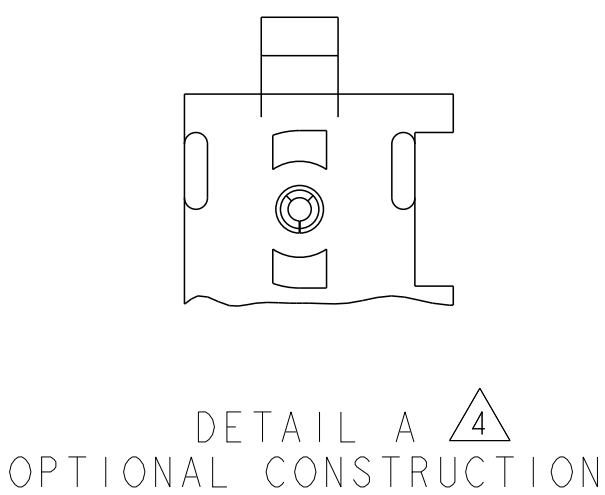
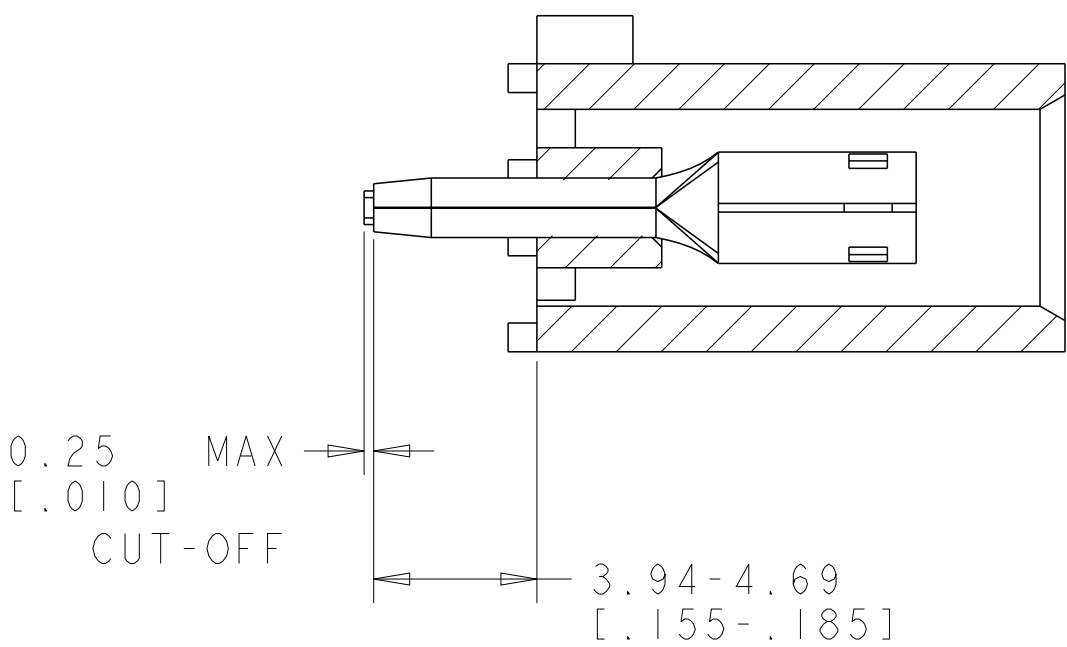
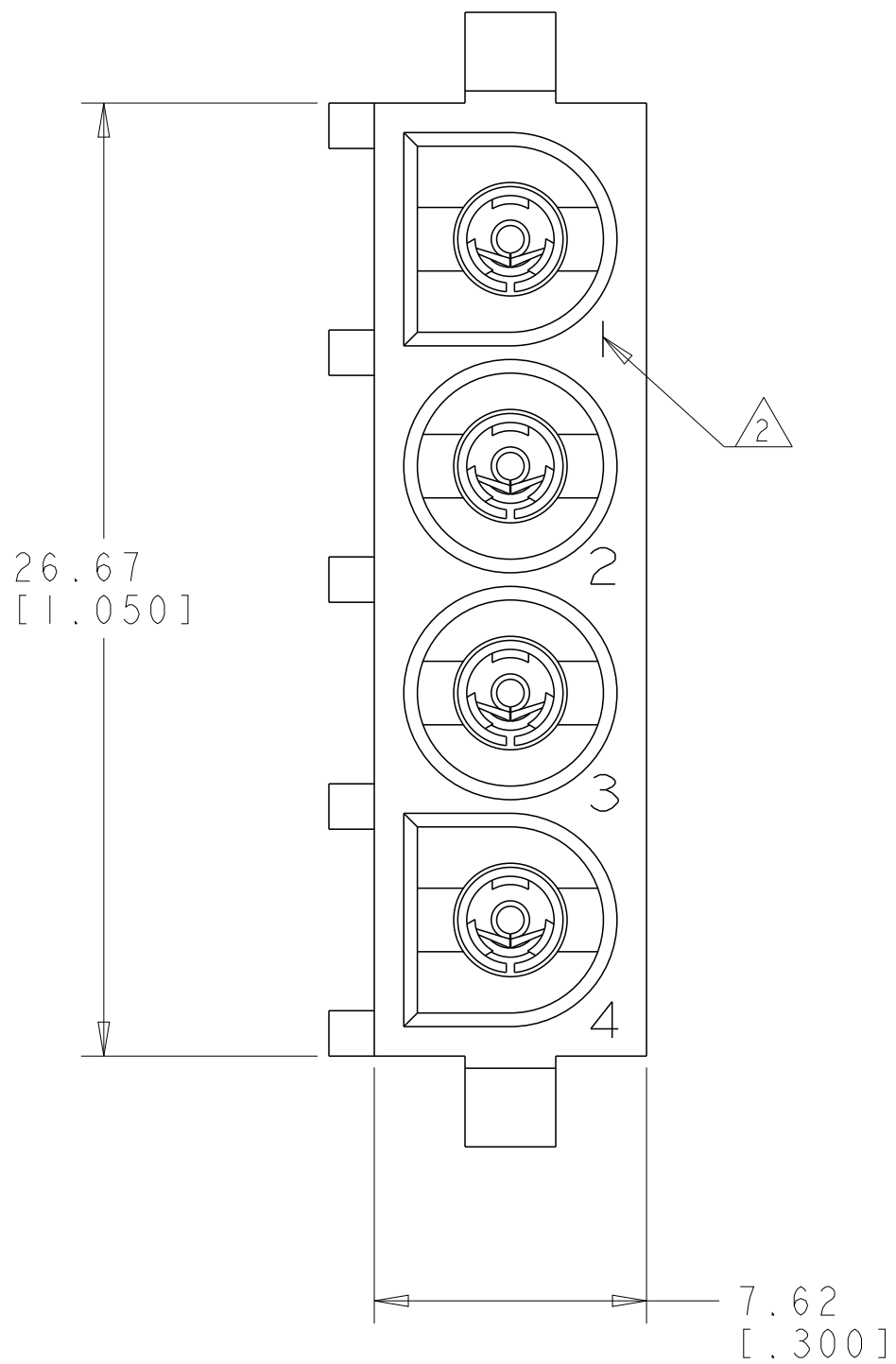
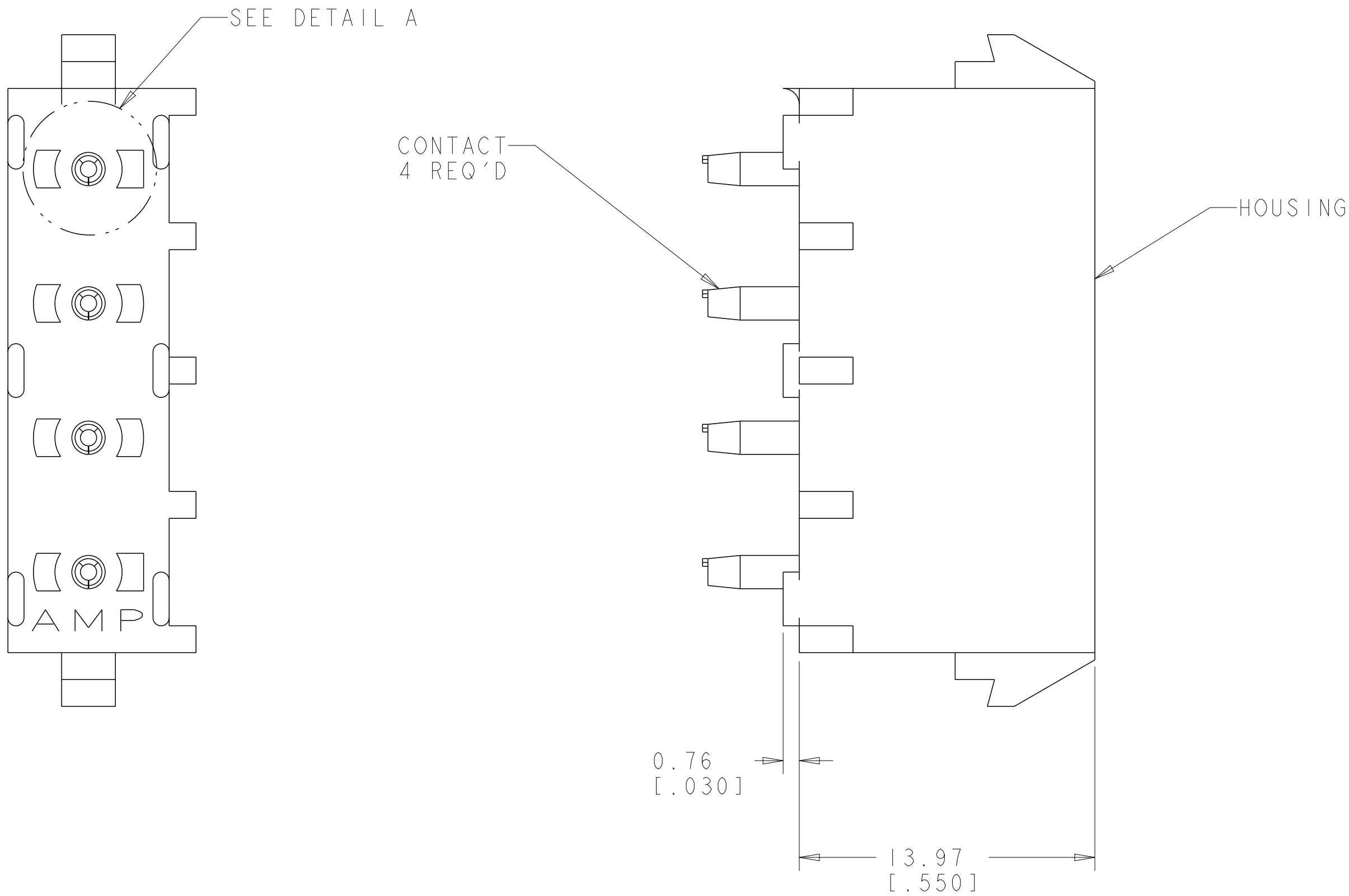
3. DIMENSIONS IN BRACKETS ARE IN INCHES.

4. DRAIN HOLES LOCATED AS SHOWN. OPTIONAL CONSTRUCTION - ALL DRAIN HOLES LOCATED 90° AS SHOWN IN DETAIL A.

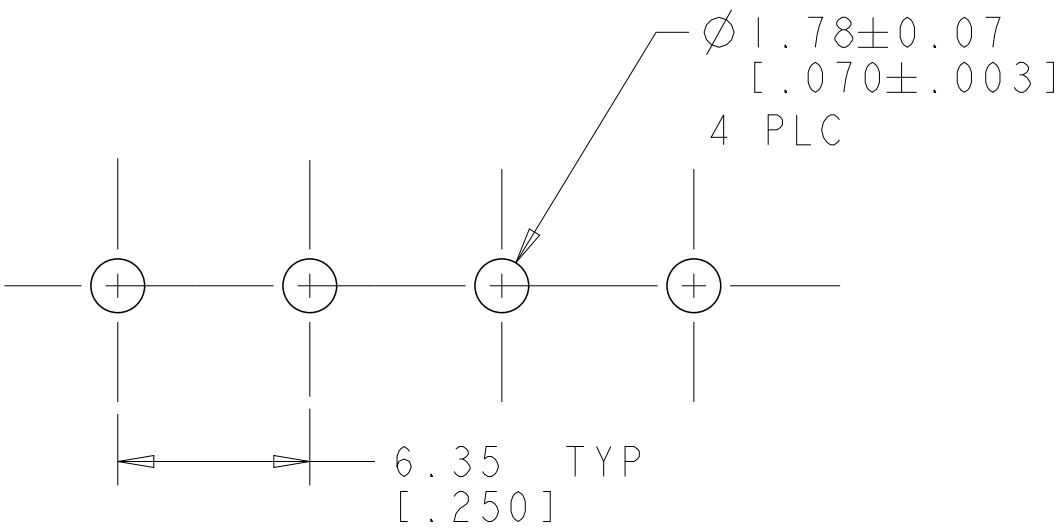
5. FLAMMABILITY UL V-0 FOR THICKNESS 0.4, 0.45, 0.8, 1.6, AND 3.0 PER IEC 60695-11-10.

6. GLOW WIRE FLAMMABILITY (GWFI): 960°C FOR THICKNESS 0.45, 0.8, 1.6, AND 3.0 PER IEC 60695-2-12.

7. GLOW WIRE IGNITION (GWIT): 825°C FOR THICKNESS 0.45, 800°C FOR THICKNESS 0.8, 775°C FOR THICKNESS 1.6 AND 3.0 PER IEC 60695-2-13.



3 DIMENSIONAL MODEL
SCALE 4:1



RECOMMENDED MOUNTING HOLE PATTERN
FOR 1.57 [0.062] THICK P.C. BOARD

PHOSPOR BRONZE, PRE-TIN		NYLON, UL V-0 GW, NATURAL		1969804-1	
PIN CONTACT MATERIAL AND FINISH		HOUSING MATERIAL AND COLOR		PART NUMBER	
THIS DRAWING IS A CONTROLLED DOCUMENT. DIMENSIONS: mm[INCHES]		TOLERANCES UNLESS OTHERWISE SPECIFIED: 0 PLC ± 1 PLC ± 2 PLC ±0.13(.005) 3 PLC ± 4 PLC ± ANGLES ±0°30' FINISH		DWN 25DEC2015 CHK BASVESH WARD 25DEC2015 WICKES, EVAN APVD 25DEC2015 WICKES, EVAN PRODUCT SPEC APPLICATION SPEC	
		MATERIAL SEE TABLE		WEIGHT -	
SEE TABLE		SEE TABLE		CUSTOMER DRAWING	
NAME SOCKET HEADER ASSEMBLY, 4 CIRCUIT, W/DRAIN HOLES, UNIVERSAL MATE-N-LOK(TM)		SIZE A1		CAGE CODE 00779	
DRAWING NO 1969804		SCALE 5:1		SHEET 1 OF 1	
REV A					