



Griplet®

Product Presentation

Basics Portfolio



Agenda



1. Value Proposition
2. Product Overview
3. Product Specifications
4. Features & Benefits
5. Markets & Applications
6. Marcomm Collaterals

Griplet® IDC Connector



Value Proposition

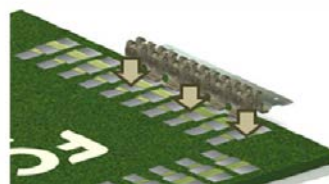
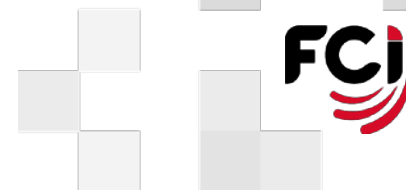
Griplet® is a miniature IDC (Insulation-Displacement Contact) Wire-To-Board solution with compact and Low profile design.

The unique Griplet® design allow the allocation of the contacts anywhere on the PCB and accommodates multiple wire sizes 20-32 AWG stranded and solid wire. The Break-Off Carrier Strip makes Griplet® the right solution for the manufacturing .

Griplet® solution has four points of wire contact plus a strain relief to provide excellent High Vibration and Highly reliable connection to Enable harsh and industrial applications with direct connection between individual wires and PCB performance,

Griplet® IDC Connector

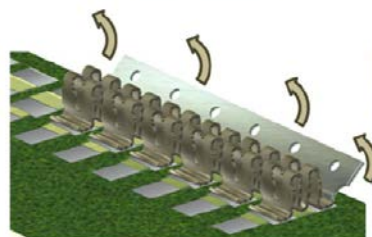
Product Overview



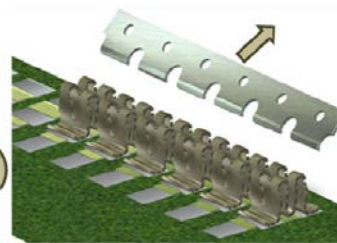
Screen solder paste
and place Griplets



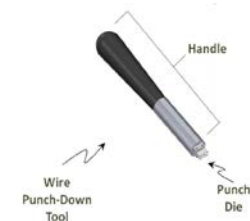
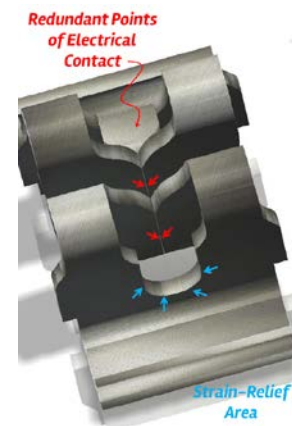
Reflow Process



Bend carrier-strip UPWARD
until it breaks free



Discard carrier-strip



Griplet® IDC Connector

Product Specifications

Product Facts

- Repairability: a wire may be removed and replaced by another wire of same size and type a maximum of TWO times.
- One part number accommodates multiple wire sizes 20-32 AWG stranded and solid wire
- Four points of wire contact plus strain relief provide excellent High Vibration performance and Highly reliable connection for harsh and industrial applications with direct connection between individual wires and PCB
- Break-Off Carrier Strip 90° bend allows easy break away and removal

Performance Characteristics

- Operating Voltage Rating: 120 V maximum, AC or DC
- Operating Current Rating: 1.5 to 8.5 A maximum (wire-dependent), 30 degrees maximum t-rise above ambient, no air-flow.
- Operating Temperature Range: -40C to +105C

Specifications

- Product Spec. : GS-12-1234

Materials

- Contact : Copper alloy
- Plating: Pre-Plated Lead-Free Tin over Nickel



Griplet® IDC Connector



Features & Benefits

Features	Benefits
Attach an insulated wire directly to a printed circuit board	Cost effective
Repairability	a wire may be removed and replaced by another wire of same size and type a maximum of TWO times.
Multiple wire sizes 20-32 AWG accommodations	Comprehensive solution for all needs
Four points of wire contact plus strain relief	High Vibration Performance and Highly reliable connection for harsh and industrial applications with direct connection between individual wires and PCB
Break-Off Carrier Strip 90° bend	Fast Application
Low profile and compact design Each connector has a height of 3.7mm and a footprint of 4.0mm x 6.1mm.	Designed for tight space and easy to install.
Individual contacts can be located anywhere on the PCB	Flexible Design
Insertion tool for insulated wire is available	Fast Application

Griplet® IDC Connector

Part Numbers

Part Number	Description
10127850-001LF	Terminals
10131832	Insertion Tool



Griplet® IDC Connector

Main Markets & Applications

- Industrial & Instrumentation

- Smart Meters
- Thermostats
- Automation Controls
- Sensors
- LED Lighting
- White Goods
- Automotive



Griplet® IDC Connector

Main Markets & Applications

Available on FCI

- Technical Data Sheet

- Sample boards are available



BOARD/WIRE-TO-BOARD CONNECTORS



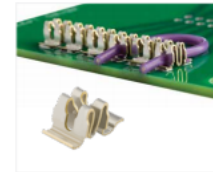
GRIPLET™

Miniature IDC Connector for Wire-To-Board Terminations

OVERVIEW

FCI's new Griplet™ connector offers a robust solution for miniature IDC Wire-To-Board connections. The low profile and compact design makes Griplet™ an ideal connector where space is tight and ease of installation is important. Each connector has a height of 3.7mm and a footprint of 4.0mm x 5.3mm.

It is specially designed for a stackable pitch up to 12 positions, with common housings available to secure and protect terminated components. Griplet™ offers a flexible solution with one part number accommodating multiple wire gauges. Redundant electrical connection points plus strain relief ensure stable operation through extreme temperature, shock, and vibration stresses.



FEATURES

- Low profile / compact

- Four points of wire contact plus strain relief

- Accommodates multiple wire sizes

- Break-off carrier strip

- Post applied insulative housings

- Multiple Terminal Delivery Options:

- Skimpulated in bags
- On Reel/ Continuous strip
- Stripped on pitch within disposable Pick & Place carrier

BENEFITS

- Connecting discrete wire components directly to the PCB when space is a constraint
- Bringing power and signals onto a PCB
- Daily routing PCB to create continuous string of boards
- Individual contacts can be located anywhere on the PCB

- Highly reliable connection
- Enable harsh and industrial market applications with direct connection between individual wires and PCB
- Reduced total applied cost compared to solder or crimp processes

- 90° bend allows easy break away and removal

- Custom-made housing for automatic Pick & Place

- Manual application or Vibratory Bowl application
- Automated application
- Customizable pitch



THANK YOU

