

D40C7

NPN SILICON
DARLINGTON POWER
TRANSISTOR



TO-202 CASE



www.centrasemi.com

DESCRIPTION:

The CENTRAL SEMICONDUCTOR D40C7 type is an NPN silicon Darlington power transistor designed for general purpose amplifier applications where high gain is required.

MARKING: FULL PART NUMBER

MAXIMUM RATINGS: ($T_C=25^\circ\text{C}$)

Collector-Emitter Voltage
Collector-Emitter Voltage
Emitter-Base Voltage
Continuous Collector Current
Peak Collector Current
Power Dissipation
Operating and Storage Junction Temperature
Thermal Resistance

SYMBOL

V_{CES} 50
 V_{CEO} 50
 V_{EBO} 13
 I_C 0.5
 I_{CM} 1.0
 P_D 6.25
 T_J, T_{stg} -55 to +150
 Θ_{JC} 20

UNITS

V
V
V
A
A
W
 $^\circ\text{C}$
 $^\circ\text{C/W}$

ELECTRICAL CHARACTERISTICS: ($T_C=25^\circ\text{C}$ unless otherwise noted)

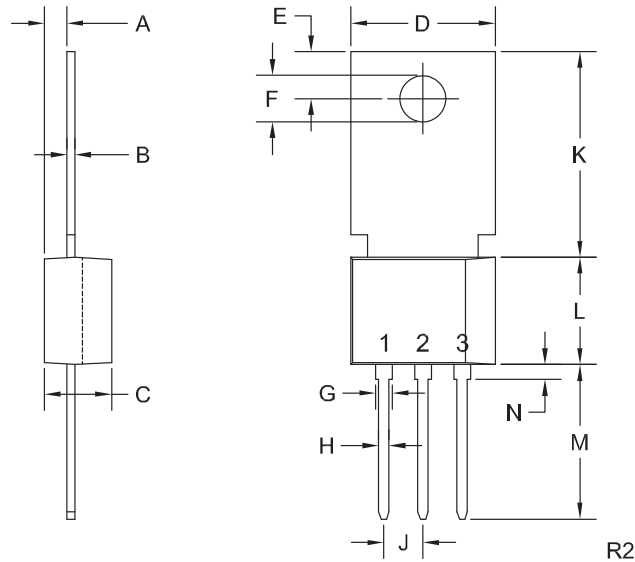
SYMBOL	TEST CONDITIONS	MIN	TYP	MAX	UNITS
I_{CES}	$V_{CE}=50\text{V}$			500	nA
I_{CBO}	$V_{CE}=50\text{V}, T_C=150^\circ\text{C}$			20	μA
I_{EBO}	$V_{EB}=13\text{V}$			100	nA
BV_{CEO}	$I_C=10\text{mA}$	50			V
$V_{CE(SAT)}$	$I_C=500\text{mA}, I_B=0.5\text{mA}$			1.5	V
$V_{BE(SAT)}$	$I_C=500\text{mA}, I_B=0.5\text{mA}$			2.0	V
h_{FE}	$V_{CE}=5.0\text{V}, I_C=200\text{mA}$	10K		70K	
f_T	$V_{CE}=5.0\text{V}, I_C=20\text{mA}$		80		MHz
C_{cb}	$V_{CB}=10\text{V}, f=1.0\text{MHz}$			10	pF
t_{on}	$I_C=1.0\text{A}, I_{B1}=1.0\text{mA}$		120		ns
t_{off}	$I_C=1.0\text{A}, I_{B1}=I_{B2}=1.0\text{mA}$		1200		ns

R2 (23-January 2012)

D40C7
NPN SILICON
DARLINGTON POWER
TRANSISTOR



TO-202 CASE - MECHANICAL OUTLINE



LEAD CODE:

- 1) Emitter
 - 2) Base
 - 3) Collector
- Tab is common to pin 3

MARKING:

FULL PART NUMBER

DIMENSIONS				
SYMBOL	INCHES		MILLIMETERS	
	MIN	MAX	MIN	MAX
A	0.055	0.071	1.40	1.80
B	0.016	0.024	0.40	0.60
C	0.173	0.181	4.40	4.60
D	0.374	0.413	9.50	10.5
E	0.118	0.154	3.00	3.90
F (DIA)	0.124	0.150	3.15	3.80
G	0.035	0.055	0.90	1.40
H	0.023	0.031	0.59	0.80
J	0.094	0.106	2.39	2.69
K	0.459	0.559	11.66	14.21
L	0.280	0.346	7.12	8.80
M	0.406	0.531	10.3	13.5
N	0.024	0.059	0.60	1.50

TO-202 (REV: R2)

R2 (23-January 2012)

OUTSTANDING SUPPORT AND SUPERIOR SERVICES



PRODUCT SUPPORT

Central's operations team provides the highest level of support to insure product is delivered on-time.

- Supply management (Customer portals)
- Inventory bonding
- Consolidated shipping options
- Custom bar coding for shipments
- Custom product packing

DESIGNER SUPPORT/SERVICES

Central's applications engineering team is ready to discuss your design challenges. Just ask.

- Free quick ship samples (2nd day air)
- Online technical data and parametric search
- SPICE models
- Custom electrical curves
- Environmental regulation compliance
- Customer specific screening
- Up-screening capabilities
- Special wafer diffusions
- PbSn plating options
- Package details
- Application notes
- Application and design sample kits
- Custom product and package development

REQUESTING PRODUCT PLATING

1. If requesting Tin/Lead plated devices, add the suffix " TIN/LEAD" to the part number when ordering (example: 2N2222A TIN/LEAD).
2. If requesting Lead (Pb) Free plated devices, add the suffix " PBFREE" to the part number when ordering (example: 2N2222A PBFREE).

CONTACT US

Corporate Headquarters & Customer Support Team

Central Semiconductor Corp.
145 Adams Avenue
Hauppauge, NY 11788 USA
Main Tel: (631) 435-1110
Main Fax: (631) 435-1824
Support Team Fax: (631) 435-3388
www.centrasemi.com

Worldwide Field Representatives:
www.centrasemi.com/wwreps

Worldwide Distributors:
www.centrasemi.com/wwdistributors

For the latest version of Central Semiconductor's **LIMITATIONS AND DAMAGES DISCLAIMER**, which is part of Central's Standard Terms and Conditions of sale, visit: www.centrasemi.com/terms