

820K YYY - 2 0 3 R 00 1

SERIES 11.00 [0.433]

# OF POSITIONS (Ex. 002)

\*\*SEE CHART A\*\*

2= FEMALE

1 = GOLD FLASH

RoHS COMPLIANT

SOLDER CUP (PANEL MOUNT)

NICKEL/CHROME PLATED SHELL

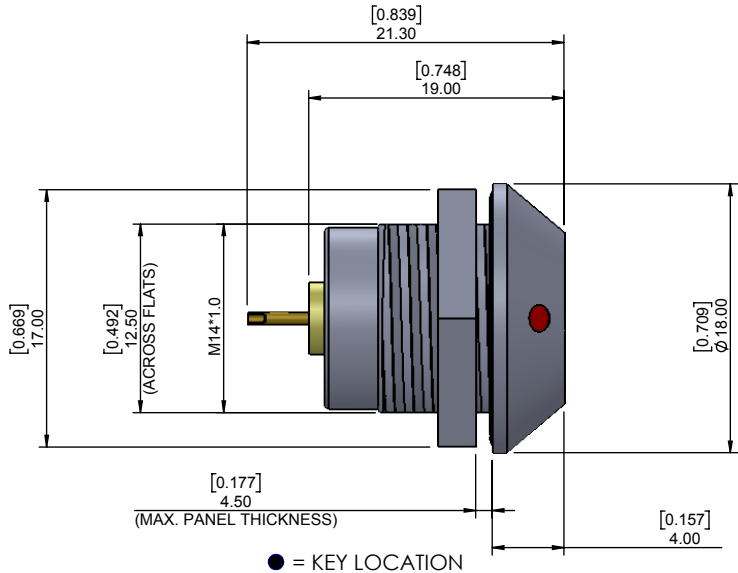


CHART A

● = KEY LOCATION

CHARACTERISSTICS

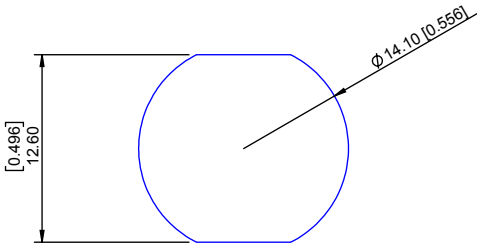
MATERIALS

SHELL : BRASS  
SHELL PLATING : NICKEL  
NUT : BRASS  
NUT PLATING : NICKEL  
LATCH SLEEVE : BRASS  
LATCH SLEEVE PLATING : NICKEL  
CONTACTS : COPPER ALLOY  
CONTACT PLATING : 7μ" GOLD PLATED OVER 196μ" NICKEL MIN.  
INSULATOR : PPS (HIGH TEMPERATURE)  
O-RING : SILICONE

MECHANICAL

DURABILITY: 5000 CYCLES  
OPERATING TEMP. RANGE: -40° C ~ +200° C  
PROCESS TEMPERATURE : 260°C FOR 5 SECONDS  
MAX. TORQUE VALUE : 5.0 Nm [44.0 IN/lbs]  
SHIELDING: 75dB @ 10MHz  
40dB @ 1GHz

IP RATING: 67



PANEL CUTOUT

TOLERANCE = +0.10, -0.0  
[+0.004, -0.00]

\*\*VIEW FROM TERMINATION END\*\*

2 POSITION 22 AWG MAX. 10 AMP MAX. PIN Ø = 0.90 [0.035]	3 POSITION 22 AWG MAX. 8 AMP MAX. PIN Ø = 0.90 [0.035]	4 POSITION 24 AWG MAX. 7 AMP MAX. PIN Ø = 0.70 [0.028]	5 POSITION 24 AWG MAX. 6.5 AMP MAX. PIN Ø = 0.70 [0.028]	6 POSITION 28 AWG MAX. 2.5 AMP MAX. PIN Ø = 0.50 [0.020]	7 POSITION 28 AWG MAX. 2.5 AMP MAX. PIN Ø = 0.50 [0.020]	9 POSITION 28 AWG MAX. 2 AMP MAX. PIN Ø = 0.50 [0.020]
CONTACT RESISTANCE = 6 mΩ TEST VOLTAGE = 1000V WORKING VOLTAGE = 330V	CONTACT RESISTANCE = 6 mΩ TEST VOLTAGE = 1200V WORKING VOLTAGE = 400V	CONTACT RESISTANCE = 7.5 mΩ TEST VOLTAGE = 850V WORKING VOLTAGE = 280V	CONTACT RESISTANCE = 7.5 mΩ TEST VOLTAGE = 850V WORKING VOLTAGE = 280V	CONTACT RESISTANCE = 10 mΩ TEST VOLTAGE = 850V WORKING VOLTAGE = 280V	CONTACT RESISTANCE = 10 mΩ TEST VOLTAGE = 800V WORKING VOLTAGE = 260V	CONTACT RESISTANCE = 10 mΩ TEST VOLTAGE = 600V WORKING VOLTAGE = 200V

RoHS COMPLIANT

	THESE DRAWINGS AND SPECIFICATIONS ARE THE PROPERTY OF NorComp AND SHALL NOT BE REPRODUCED, COPIED OR USED AS THE BASIS FOR THE MANUFACTURE OR SALE OF APPARATUS WITHOUT WRITTEN PERMISSION.	NorComp	DRAWN: M. SIGMON	DATE: 02-25-16	SCALE: N.T.S.	SHEET 1 OF 1	REV: 3
						DWG NO. 820KYYY-203R001	