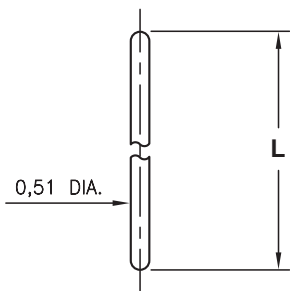


MALE PCB PINS

STRAIGHT AND RIGHT ANGLE PINS

3320

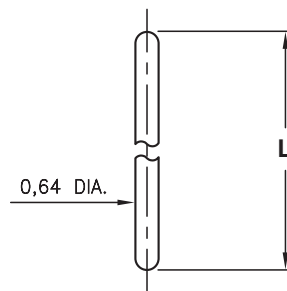
3320-X-00-XX-00-00-03-0



Basic Part Number	Length L
3320-0	6,35
3320-1	12,7

3325

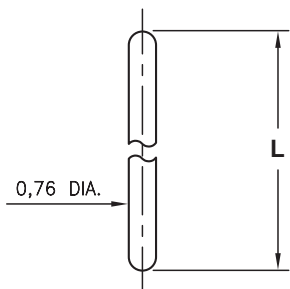
3325-X-00-XX-00-00-03-0



Basic Part Number	Length L
3325-0	6,35
3325-1	12,7
3325-2	19,05

3330

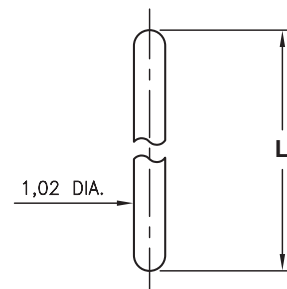
3330-X-00-XX-00-00-03-0



Basic Part Number	Length L
3330-0	6,35
3330-1	12,7
3330-2	19,05

3340

3340-X-00-XX-00-00-03-0

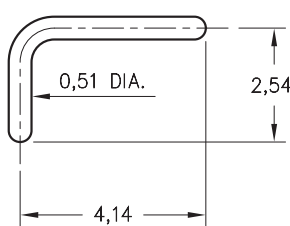


Basic Part Number	Length L
3340-0	6,35
3340-1	12,7
3340-2	19,05

3720

3720-0-14-XX-00-00-03-0

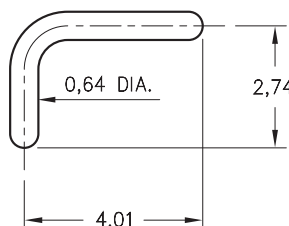
Right Angle Bent Pin



3725

3725-0-14-XX-00-00-03-0

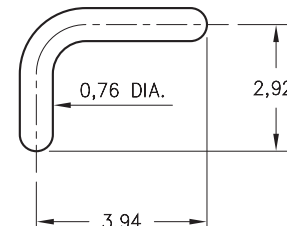
Right Angle Bent Pin



3730

3730-0-14-XX-00-00-03-0

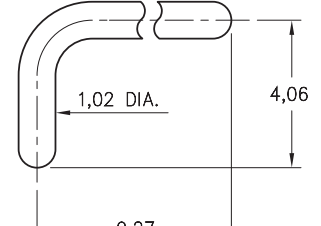
Right Angle Bent Pin



3740

3740-0-14-XX-00-00-03-0

Right Angle Bent Pin



SPECIFICATIONS:

Pin Material: Brass Alloy 360, 1/2 Hard
(Except where noted)

Dimensions: Inches

Tolerances On: Lengths: $\pm 0,13$
Diameters: $\pm 0,051$
Angles: $\pm 2^\circ$



ORDER CODE: 3XXX - X - 00 - XX - 00 - 00 - 03 - 0

BASIC PART #

SPECIFY PIN FINISH:

- ◆ 80 5,08 μ m TIN OVER NICKEL (RoHS)
- ◆ 15 0,25 μ m GOLD OVER NICKEL (RoHS)

