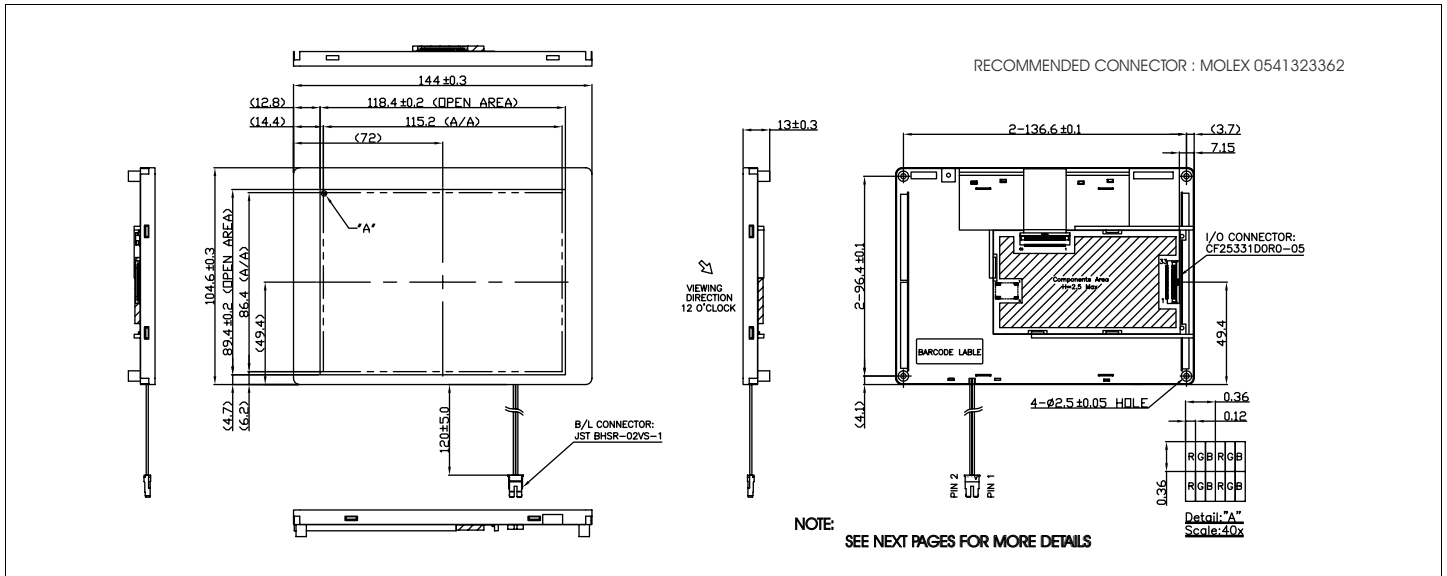


# HDA570S-VH (High Brightness)

Dimensional Drawing

5.7" , QVGA (TFT) Color Graphics ,White LED Backlight



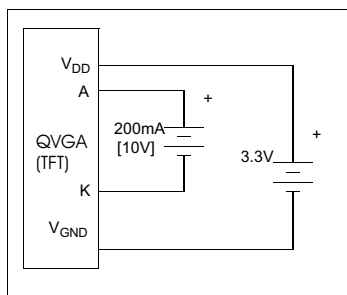
Features	
Viewing Angle(U/D/R/L).....	60/50/60/60
High Contrast.....	450
Fast Response Time (Tr/Tf).....	15/35 msec
Built-in Controller.....	none
Touch screen .....	optional
High Brightness.....	700 cd/m

Physical Data	
Module Size.....	144.0W x104.6H x13.0T mm
Active Area Size.....	115.2W x86.4 H mm
Dot Pitch.....	0.12W x 0.36H mm
Weight.....	153g

## Electrical Characteristics (VDD=3.3±0.125V 25°C)

PARAMETER	SYM	CONDITION	MIN	TYP	MAX	UNIT
OPERATING VOLTAGE	V <sub>DD</sub>	-	3.0	3.3	3.6	V
OPERATING VOLTAGE	V <sub>LED</sub>	I = 200 mA	-	10	-	V
INPUT HIGH VOLTAGE	V <sub>IH</sub>		0.7*V <sub>DD</sub>	-	V <sub>DD</sub>	V
INPUT LOW VOLTAGE	V <sub>IL</sub>		0	-	0.3*V <sub>DD</sub>	V
OPERATING CURRENT	I <sub>DD</sub>		-	50	70	mA
OPERATING CURRENT LED	I <sub>LED</sub>		-	200	-	mA
POWER CONSUMPTION LED	P <sub>D</sub>		-	165	231	mW
BRIGHTNESS	L	Average	-	700	-	cd/m <sup>2</sup>

## Power Supply



## Pin Connections

PIN NO.	SYMBOL		FUNCTION
1	VSS	-	Ground Pin
2	CLK	H/L	Data Sampling Clock
3	IHS	L	Horizontal Sync.
4	IVS	L	Vertical Sync.
5	VSS	-	Ground Pin
6	R0	H/L	Red Data Signal (LSB)
7	R1	H/L	Red Data Signal
8	R2	H/L	Red Data Signal
9	R3	H/L	Red Data Signal
10	R4	H/L	Red Data Signal
11	R5	H/L	Red Data Signal (MSB)
12	VSS	-	Ground Pin
13	G0	H/L	Green Data Signal (LSB)
14	G1	H/L	Green Data Signal
15	G2	H/L	Green Data Signal
16	G3	H/L	Green Data Signal
17	G4	H/L	Green Data Signal
18	G5	H/L	Green Data Signal (MSB)
19	VSS	-	Ground Pin
20	B0	H/L	Blue Data Signal (LSB)
21	B1	H/L	Blue Data Signal
22	B2	H/L	Blue Data Signal
23	B3	H/L	Blue Data Signal
24	B4	H/L	Blue Data Signal
25	B5	H/L	Blue Data Signal
26	VSS	-	Ground Pin
27	DEN	L	Data Enable Input
28	VCC	-	3.3V Power Supply
29	VCC	-	3.3V Power Supply
30	R/L	H/L	Horizontal Display Mode
31	U/D	H/L	Vertical Display Mode
32	NC	-	No Connection
33	VSS	-	Ground Pin

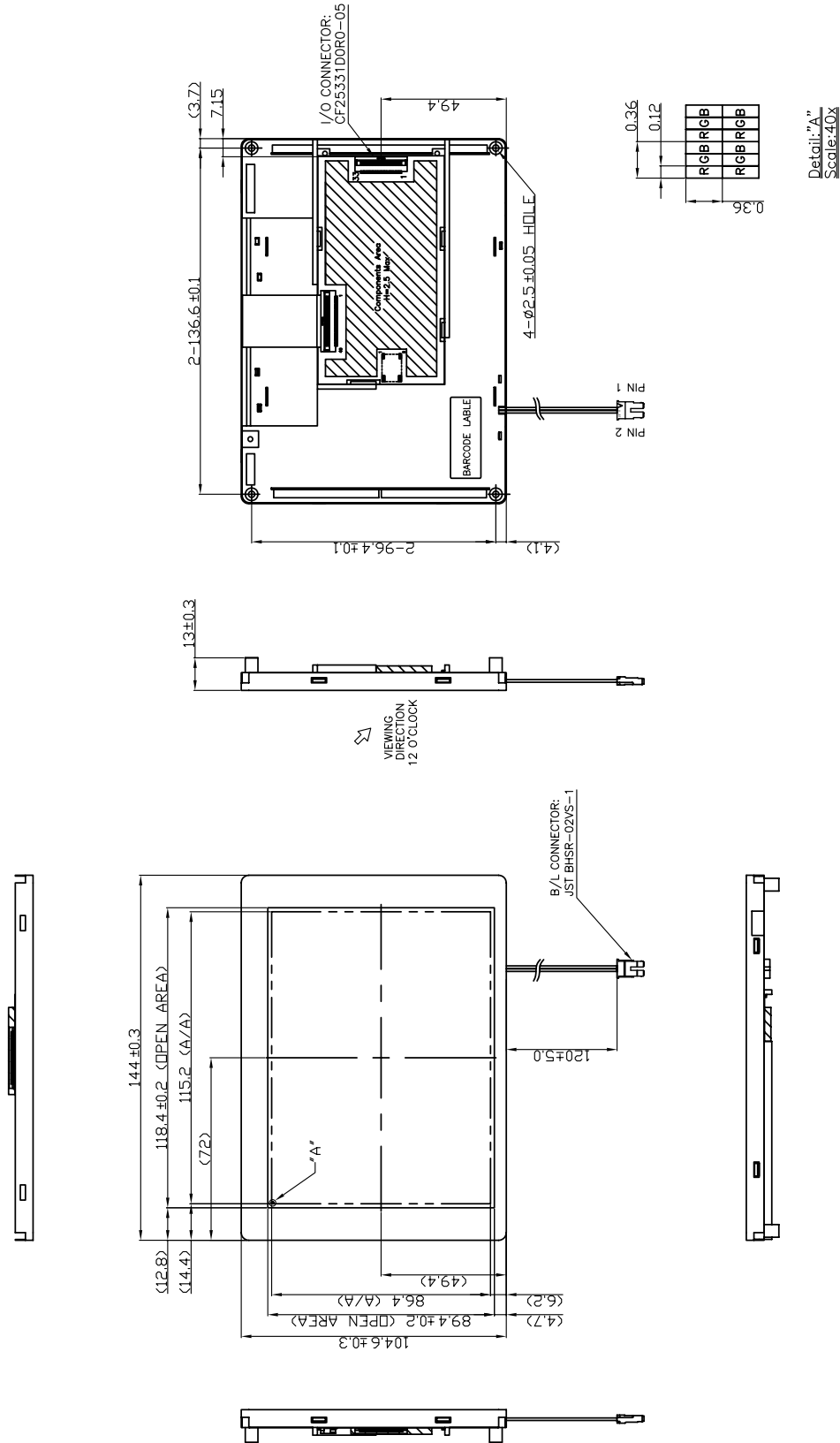
## Absolute Maximum Ratings

PARAMETER	SYMBOL	MIN	MAX	UNIT
SUPPLY VOLTAGE	V <sub>DD</sub> \ V <sub>DD</sub>	-0.3	4.3	V
BACKLIGHT CURRENT(White LED)	I <sub>LED</sub>	-	250	mA
INPUT VOLTAGE	V <sub>IN</sub>	-0.3	V <sub>DD</sub> + 0.3	V
OPERATING TEMPERATURE	T <sub>OP</sub>	-20	+70	°C
STORAGE TEMPERATURE	T <sub>STG</sub>	-30	+80	°C

# HDA570S-VH (High Brightness)

Dimensional Drawing

5.7" , QVGA (TFT) Color Graphics ,White LED Backlight



# HDA570ST-VH (High Brightness)

Dimensional Drawing

5.7" , QVGA (TFT), with Touch Screen, White LED Backlight

TOUCH SCREEN connector : KYOCERA-ELCO 046227004100829+

With TOUCH SCREEN

