

CentralTM Semiconductor Corp.

145 Adams Ave., Hauppauge, NY 11788 USA
Phone (516) 435-1110 FAX (516) 435-1824

Manufacturers of World Class Discrete Semiconductors

CBR10-J010 SERIES

SILICON BRIDGE RECTIFIER
10 AMPS, 100 THRU 1000 VOLTS

CASE CM.

DESCRIPTION

The CENTRAL SEMICONDUCTOR CBR10-J010 Series types are Silicon Single Phase Full Wave Bridge Rectifiers designed for general purpose applications.

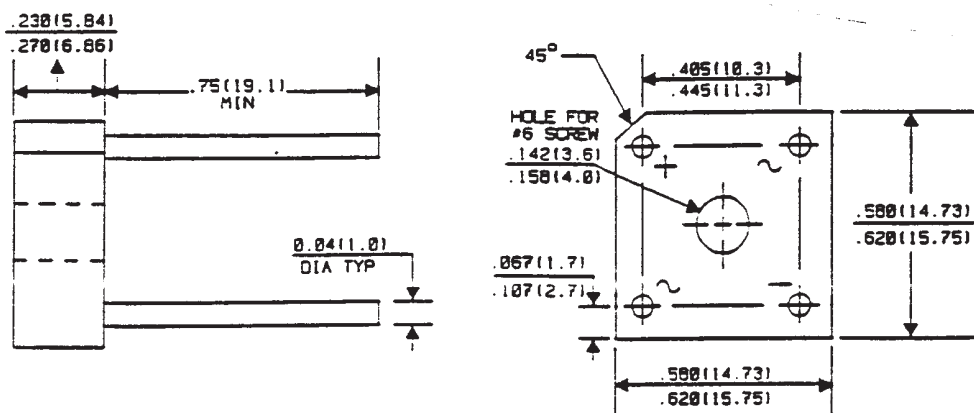
MAXIMUM RATINGS (T_A = 50°C)

	SYMBOL	CBR10 -J010	CBR10 -J020	CBR10 -J040	CBR10 -J060	CBR10 -J080	CBR10 -J100	UNITS
Peak Repetitive Reverse Voltage	V _{RRM}	100	200	400	600	800	1000	V
DC Blocking Voltage	V _R	100	200	400	600	800	1000	V
RMS Reverse Voltage	V _{R(RMS)}	70	140	280	420	560	700	V
Average Forward Current *								
T _C = 80°C	I _O			10				A
T _A = 30°C	I _O			5.0				A
Peak Forward Surge Current	I _{FSM}			150				A
Operating and Storage								
Junction Temperature	T _J , T _{stg}			-65 to +150				°C
Thermal Resistance	θ _{JC}			3.0				°C/W

ELECTRICAL CHARACTERISTICS (T_A = 25°C unless otherwise noted)

SYMBOL	TEST CONDITIONS	MIN	MAX	UNITS
V _F	I _F = 5.0A		1.2	V
I _R	V _R = Rated V _{RRM}		10	μA

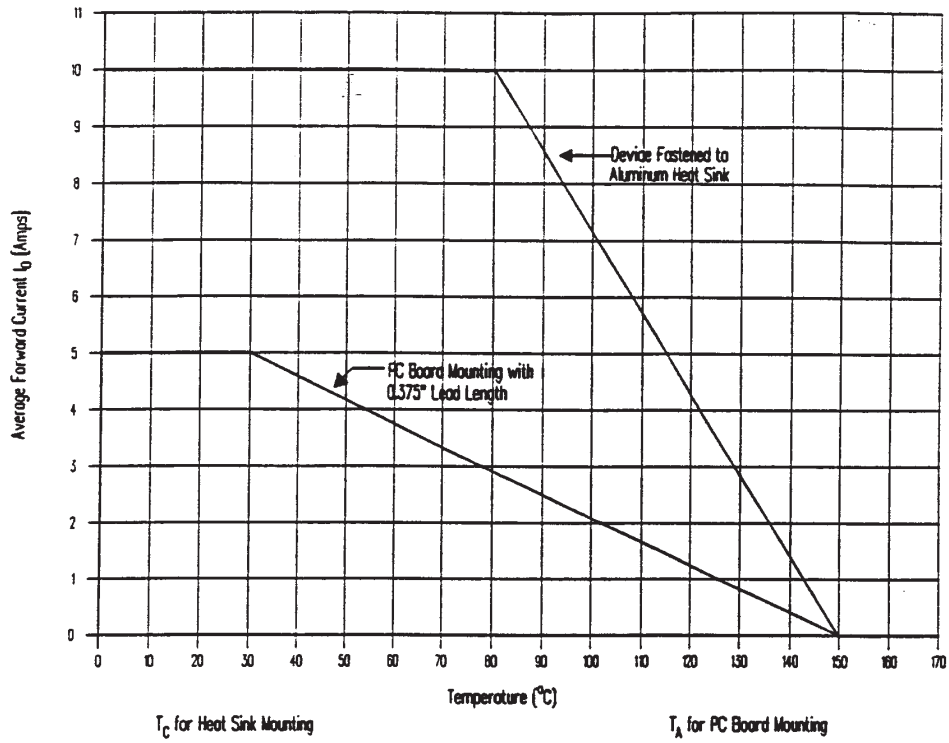
* SEE REVERSE FOR CURVE.



DIMENSIONS IN INCHES (mm).

Derating Curve for Average Forward Current

(60 Hz Resistive or Inductive Load)



Typical Instantaneous Forward Characteristics Per Bridge Element

