

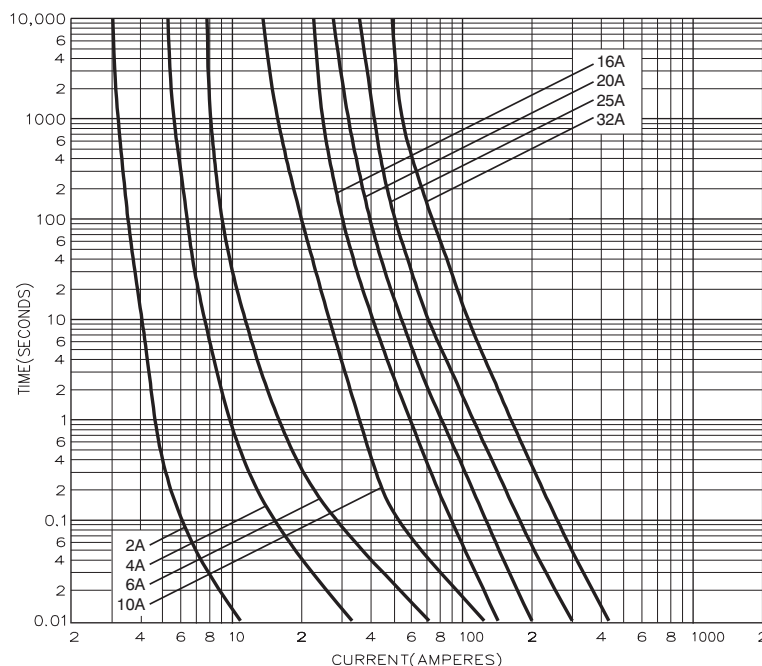
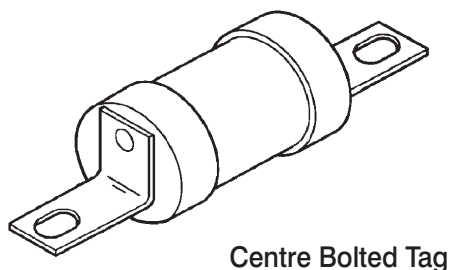
# BS88, IEC269 Industrial HRC Fuse Links

## Centre Bolted Tags 550V ac 250V dc 2 - 32 Amps

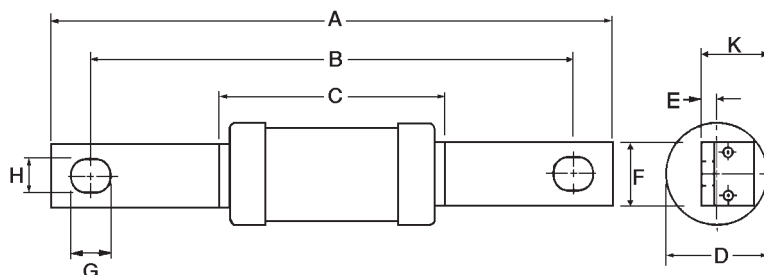
**AC**

### Time-Current Characteristic Curves

Non Motor Rated



### Dimensional Data



Catalog' Number	I²t (Amps² Seconds)			Nom. Watts Loss	Rated Voltage	Dimensions (mm)								
	Amp Ratings	Pre- Arcing	Total at 415V			A	B	C	D	E	F	G	H	K
AC2	2	1.2	3.1	1.2	550 ac	113.5	97.5	55.5	21.0	1.6	12.7	13.5	7.0	11.2
AC4	4	11	31	1.4										
AC6	6	32	90	1.8										
AC10	10	20	60	2.4										
AC16	16	85	240	2.9										
AC20	20	220	580	3.1										
AC25	25	500	1400	3.2										
AC32	32	1000	2760	3.5										

Packaging - 20 per carton

This bulletin is intended to clearly present comprehensive product data and provide technical information that will help the end user with design applications. Bussmann reserves the right, without notice, to change design or construction of any products and to discontinue or limit distribution of any products. Bussmann also reserves the right to change or update, without notice, any technical information contained in this bulletin. Once a product has been selected, it should be tested by the user in all possible applications.

**Bussmann Division**  
**Cooper (U.K.) Ltd**  
 Burton-on-the-Wolds  
 Leicestershire, LE12 5TH  
 United Kingdom  
 Tel: (44) (0)1509 88 27 37  
 Fax: (44) (0)1509 88 27 86

Head Office  
 St. Louis, MO, U.S.A. Tel: (314) 527-3877 Fax: (800) 544-2570 International Fax: (314) 527-1445



Bussmann Information Fax (00 1) 314 527 1450  
 Bussmann WEB site - <http://www.bussmann.com>

A **COOPER** Industries Company