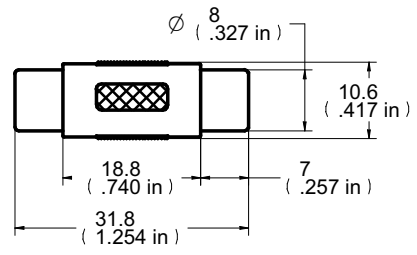


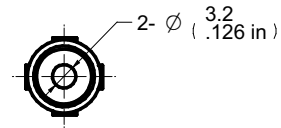


Description: RCA Female Inline Adaptor  
Part No: 19-1702  
Application: Adapter  
Crimp Tool: N/A  
Impedance: N/A  
Frequency Range: N/A  
Material: Body Brass Nickel Plated  
Shell PVC Black  
Insulation Bakelite Yellow  
RoHS Compliance: Yes  
Technical Detail: N/A

| 受控 CONTROLLED DOCUMENT |              |           |    |                  |           |
|------------------------|--------------|-----------|----|------------------|-----------|
| 编号<br>P/N              | 19-1702-CUST | 版本<br>Rev | 01 | 日期<br>Rel'd Date | SEP 19,09 |




DIM OUTLINE



|                             |                  |                  |  |
|-----------------------------|------------------|------------------|--|
| DRAWING NO.<br>19-1702-CUST |                  |                  |  |
| REVISIONS                   |                  |                  |  |
| 01                          | OFFICIAL RELEASE |                  |  |
|                             | 08-05-09         | W<br>Y<br>U<br>H | 2009.09.1<br>6 14 08:50<br>Betty + 08 00 |

CUSTOMER COPY

|   |        |                        |                  |   |  |  |
|---|--------|------------------------|------------------|---|--|--|
| TOLERANCE UNLESS OTHERWISE SPECIFIED  |        | DRAWN BY<br>IVON.W     | DATE<br>08-05-09 | <div><b>Connectivity Solutions</b></div> |  |  |
| DECIMALS  | mm     | CHECKED BY<br>BETTY.YU | DATE<br>08-05-09 |   |  |  |
| X   | ± 0.5  | APPROVED BY<br>THOMAS  | DATE<br>08-05-09 | TITLE<br><br>RCA FEMALE INLINE ADAPTOR  |  |  |
| X.X   | ± 0.3  |                        |                  |   |  |  |
| X.XX  | ± 0.1  |                        |                  |   |  |  |
| ANGLES  | ± 0.5° | U/M                    | mm               | <div>SHEET<br/>1 OF 1</div> <div>DRAWING NO.<br/>19-1702-CUST</div> <div>SIZE<br/>A</div>                                     |  |  |
| THIS DRAWING WAS PRODUCED BY COMPUTER, DO NOT SCALE DRAWING OR UPDATE MANUALLY. |        |                        |                  |   |  |  |