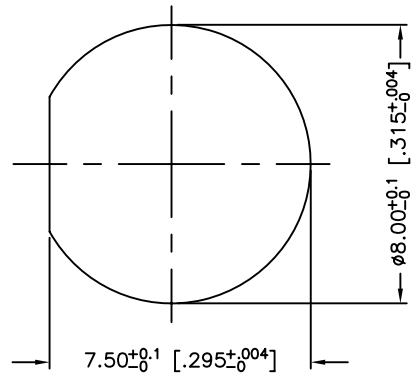
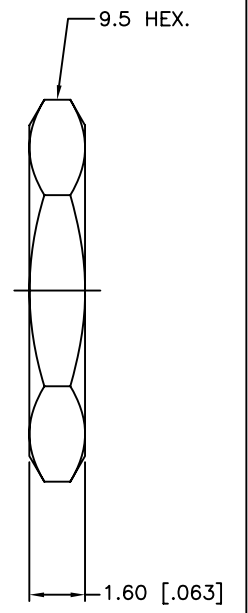
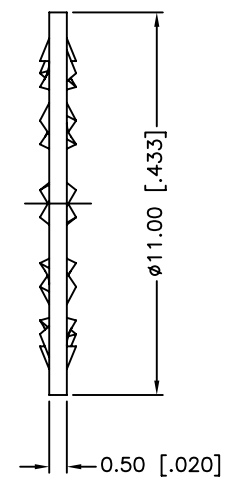
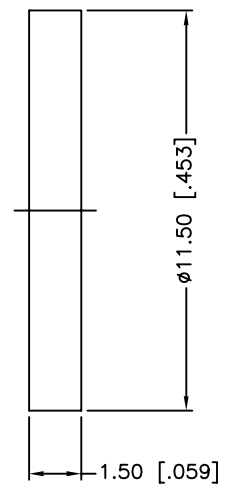
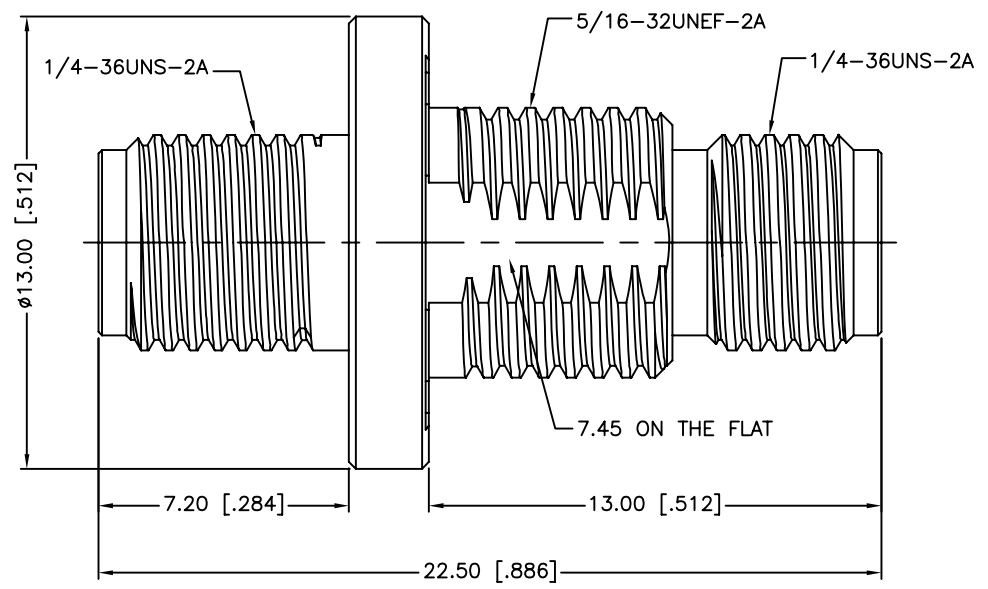


REV.	DATE	ECR NO.	DESCRIPTION
NC	05/19/10	XXXXXX	INITIAL RELEASE



RECOMMENDED MOUNTING HOLE



1. SEALING REQUIREMENT: IP-68 MUST WITHSTAND 3' DEPTH OF WATER FOR ONE HOUR WITHOUT ANY SIGNS OF LEAKAGE
2. MAX. PANEL THICKNESS= 3mm

DESCRIPTION	MATERIAL	FINISH	QTY	
7	HEX NUT	STAINLESS STEEL	PASSIVATED	1
6	LOCK WASHER	BRASS	GOLD	1
5	GASKET	SILICONE	RED	1
4	CONTACT PIN	BER. COPPER	GOLD	1
3	O-RING	SILICON RUBBER	RED	1
2	INSULATOR	PTFE	NATURAL	1
1	BODY	STAINLESS STEEL	PASSIVATED	1

UNLESS OTHERWISE SPECIFIED DIMENSIONS ARE IN MILLIMETERS. DIMENSIONS IN [] ARE IN INCHES AND FOR CUSTOMER REFERENCE ONLY.

UNLESS OTHERWISE SPECIFIED TOLERANCES FOR MILLIMETERS ARE:
0.5 - 8mm ± 0.20mm
8 - 30mm ± 0.40mm
30 - 120mm ± 0.50mm

UNLESS OTHERWISE SPECIFIED TOLERANCES FOR INCHES ARE:
.020 - .315 = ± 0.007"
.315 - 1.180 = ± 0.015"
1.180 - 4.724 = ± 0.020"

DO NOT SCALE DRAWING

APPROVALS	DATE
DRAWN M.ZHANG	05/19/10
CHECKED	
ISSUED	
SHEET 1 OF 1	
CAD FILE	
C:/CONNEX/132170-12SS.DWG	

Amphenol Connex

PART DESCRIPTION
SMA BULKHEAD JACK TO JACK ADAPTOR (IP 68)

PART NO.
132170-12SS

DWG. NO. 132170-12SS.DWG	REV. NC	SIZE A	SCALE NA
--------------------------	---------	--------	----------