

DO NOT  
SCALE FROM  
THIS PRINT

ALL DIMENSIONS ARE REFERENCES  
(SEE XC-179-XX-X-XX FOR CONTROLLING PRINT)

CC79X-XXXX-XX-X

SUPPLIED  
-L: LOOSE  
-R: REEL

LEAD STYLE  
-2630 (26-30 AWG)  
-2024 (20-24 AWG)  
\*\*-2830 (28-30 AWG) (PTFE)

PLATING  
-F: FLASH SELECTIVE  
-L: LIGHT SELECTIVE  
-S: SELECTIVE

OPTION  
(INSULATION THICKNESS)  
-01

\*\* NOT RELEASED FOR PRODUCTION

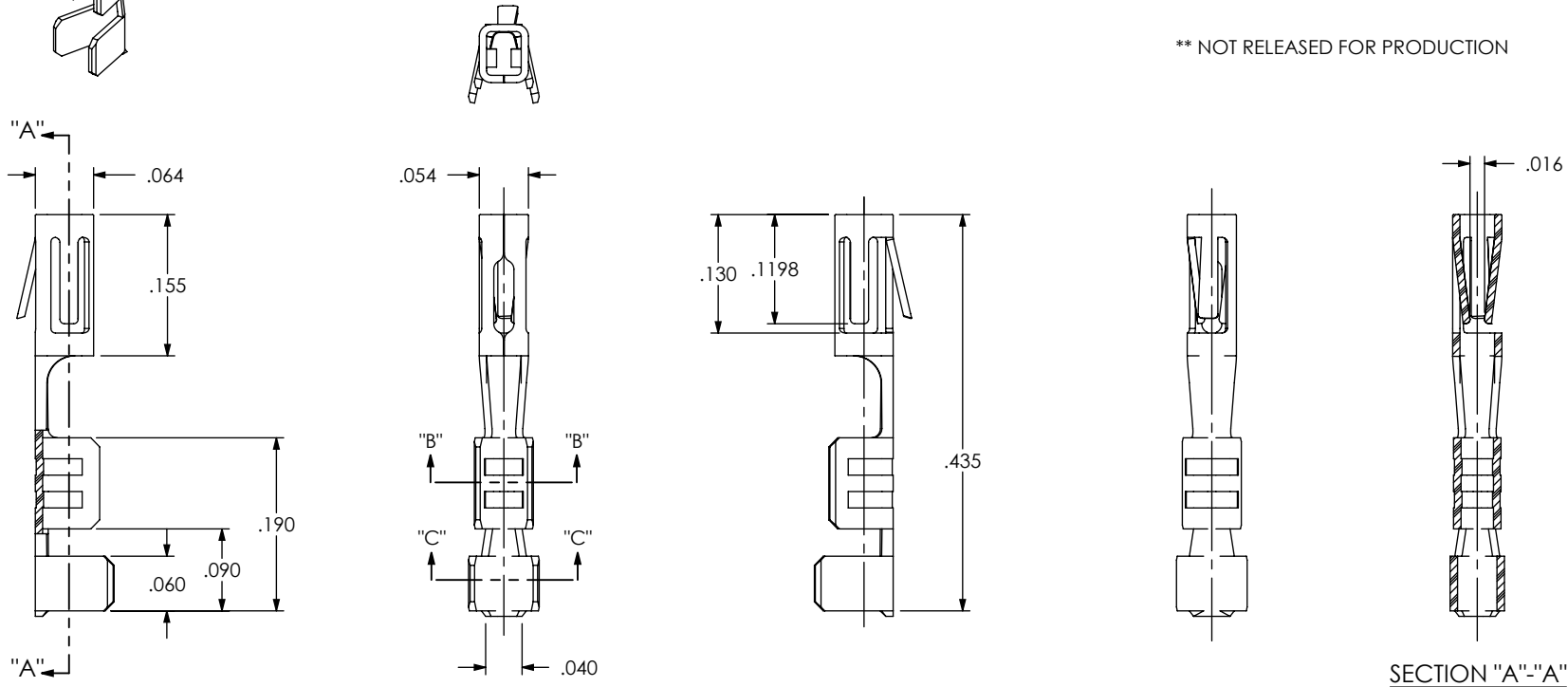
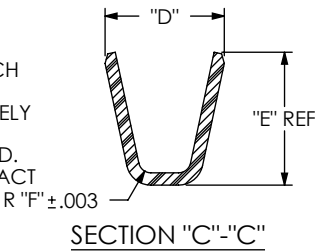
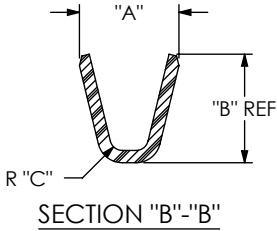


FIG 1  
(CC79L-XXXX-0T-X SHOWN)



- NOTES:
1. REPRESENTS A CRITICAL DIMENSION.
  2. MAXIMUM PARTS PER REEL: 14,000 +300/-0 PCS.
  3. LABEL SHOULD INCLUDE PLATE CALLOUT AND PLACED ON REEL AS SHOWN.
  4. MAXIMUM No OF SPLICES PER REEL: 2. SPLICES ARE NOT TO BE CONNECTED. No OF SPLICES TO BE MARKED ON EACH REEL.
  5. REELED PARTS TO BE INTERLEAVED WITH THE PAPER BETWEEN EACH LAYER OF PARTS.
  6. MAXIMUM No OF INTERLEAVE PAPER SPLICES PER REEL: 3. SECURELY CONNECT INTERLEAF SPlice.
  7. OUTER WRAP SHALL RECEIVE RB-24-0.75-P PROTECTIVE REEL BAND.
  8. GOLD PLATING IS NOT REQUIRED ON THE OUTSIDE OF THE CONTACT BOX OR ON THE SIDE WITH THE RETENTION LANCE.

TABLE 1								
STYLE	"A"	"B"	"C"	"D"	"E"	"F"	"J"	"K"
-2630	.055	.045	.015	.080	.073	.025	.010	.020
-2024	.080	.073	.018	.110	.103	.030	.010	.030
*-2830	.055	.045	.015	.054	.057	.016	.010	.020

\* NOT TOOLED

UNLESS OTHERWISE SPECIFIED,  
DIMENSIONS ARE IN INCHES.  
TOLERANCES ARE:

DECIMALS      ANGLES  
.XX:              2 °  
.XXX:  
.XXXX:

PROPRIETARY NOTE

THIS DOCUMENT CONTAINS INFORMATION  
CONFIDENTIAL AND PROPRIETARY TO  
SAMTEC, INC. AND SHALL NOT BE REPRODUCED  
OR TRANSFERRED TO OTHER DOCUMENTS OR  
DISCLOSED TO OTHERS OR USED FOR ANY  
PURPOSE OTHER THAN THAT WHICH IT WAS  
OBTAINED WITHOUT THE EXPRESSED WRITTEN  
CONSENT OF SAMTEC, INC.



520 PARK EAST BLVD, NEW ALBANY, IN 47150  
PHONE: 812-944-6733      FAX: 812-948-5047  
e-Mail: info@SAMTEC.com      code: 55322

MATERIAL:      DO NOT SCALE DRAWING      SHEET SCALE: 5:1  
PHOS BRONZE, 510 SPRING TEMPER  
THICKNESS: .0080

DESCRIPTION:      .100 IPD1 CONTACT  
DWG. NO.      CC79X-XXXX-XX-X  
BY: DEAN P      8/12/2004      SHEET 1 OF 2

FIG 2  
(CC79R-XXXX-0T-X SHOWN)  
(SAME AS FIG 1, UNLESS OTHERWISE SHOWN)  
(SEE FIG 3 FOR REEL SPECIFICATIONS)

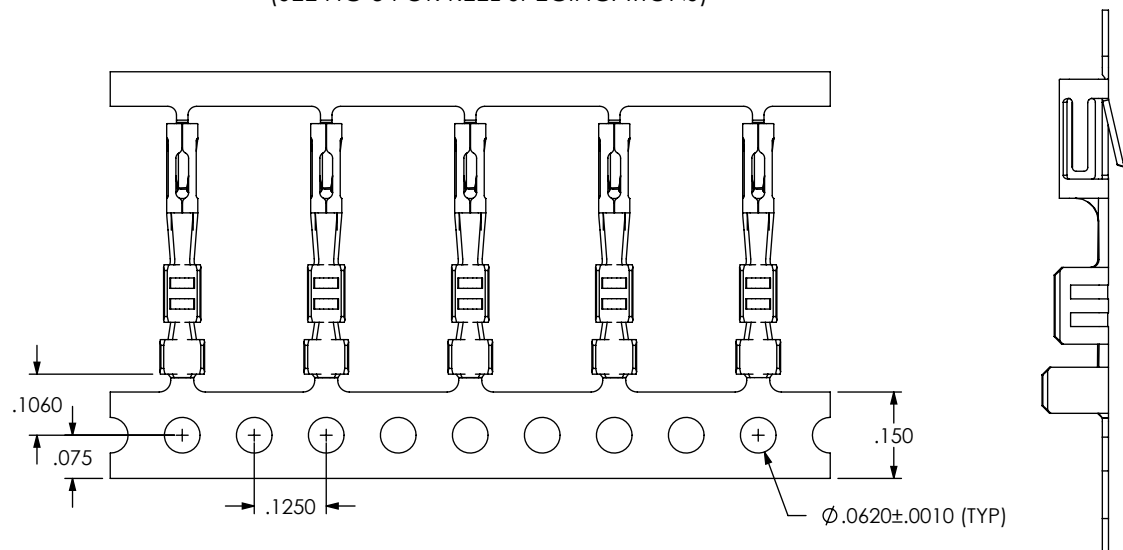
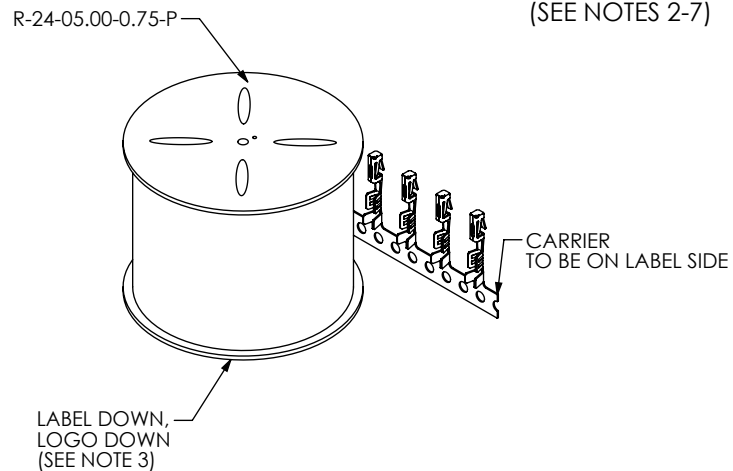
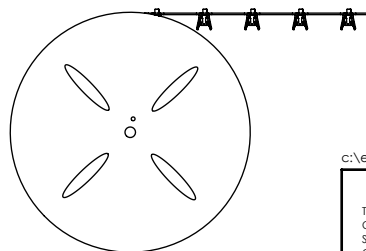


FIG 3  
REEL SPECIFICATIONS  
(SEE NOTES 2-7)



UNWINDING DIRECTION



c:\enterprise\dwg\MISC\MKTG\CC79X-XXXX-XX-X-MKT.SLDDRW

PROPRIETARY NOTE

THIS DOCUMENT CONTAINS INFORMATION  
CONFIDENTIAL AND PROPRIETARY TO  
SAMTEC, INC. AND SHALL NOT BE REPRODUCED  
OR TRANSFERRED TO OTHER DOCUMENTS OR  
DISCLOSED TO OTHERS OR USED FOR ANY  
PURPOSE OTHER THAN THAT WHICH IT WAS  
OBTAINED WITHOUT THE EXPRESSED WRITTEN  
CONSENT OF SAMTEC, INC.

DO NOT SCALE DRAWING

SHEET SCALE: 5:1

**samtec**

520 PARK EAST BLVD, NEW ALBANY, IN 47150  
PHONE: 812-944-6733 FAX: 812-948-5047  
e-Mail: info@SAMTEC.com code: 55322

DESCRIPTION:

.100 IPD1 CONTACT

DWG. NO.

CC79X-XXXX-XX-X

BY: DEAN P

8/12/2004

SHEET 2 OF 2