

### Models Available

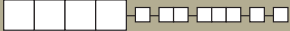
# E010 Series Sealed Momentary Pushbutton Switches



A

Pushbutton

## SWITCH FUNCTION



NO. POLES	MODEL NO.	SWITCH FUNCTION		CONNECTED TERMINALS		SCHEMATIC
		POS. 1	POS. 2	POS. 1	POS. 2	
		C&K marking this side	C&K marking this side	C&K marking this side	C&K marking this side	
SP	<b>E112</b>	ON	MOM.	2-1	2-3	
<b>SPDT</b>  Part number shown: E112SD1CQE						

MOM. = Momentary

All models with all options when ordered with G or Q contact material.

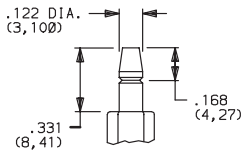
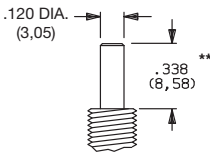
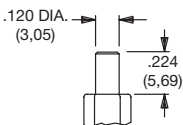
## PLUNGER



**S** .218" HIGH

**L** .338" HIGH

**M** .331" HIGH, SNAP-FITTING



Standard with D1 bushing (as shown).

† Subtract .100 (2, 54) from plunger length when ordered with Y bushing.

Standard with Y bushing (as shown).

\*\* Add .100 (2, 54) from plunger length when ordered with D1 bushing.

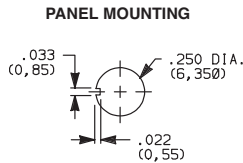
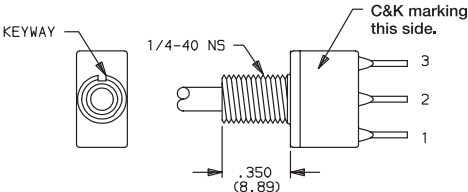
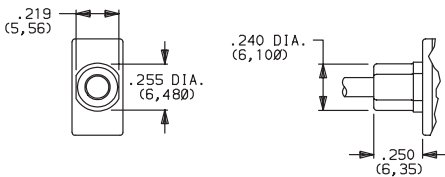
**NOTE:** Caps available for all plunger options, see pages A-50 and A-51.

## BUSHING



**D1** UNTHREADED

**Y** THREADED, KEYWAY



S plunger standard with D1 bushing.

L plunger standard with Y bushing. Available only with C, Z terminations.  
Hardware: One dress nut part number 299D01201, one hex nut and lockwasher supplied standard.  
**Withstands 4 in./lbs. without distortion.**

**NOTE:** Internal o-ring actuator seal standard for all bushing options.



Third Angle Projection  
Dimensions are shown: Inches (mm)  
Specifications and dimensions subject to change

[www.ck-components.com](http://www.ck-components.com)

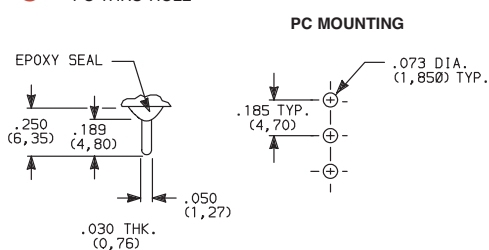
**A****Pushbutton**

# E010 Series Sealed Momentary Pushbutton Switches

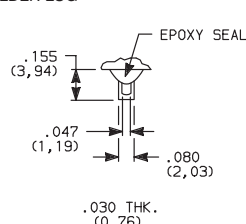
## TERMINATIONS



### C PC THRU-HOLE

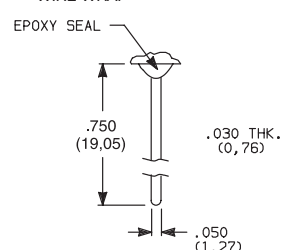
**SPDT**

### Z SOLDER LUG

**SPDT**

Not available with P contact materials.

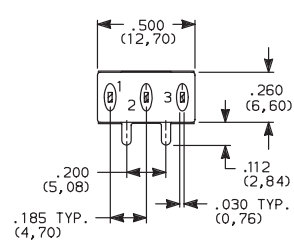
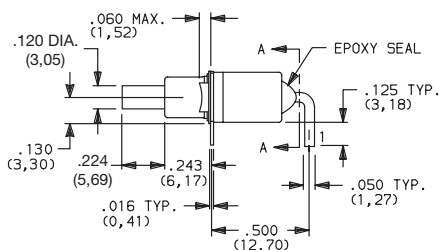
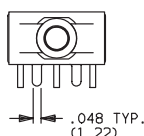
### W WIRE WRAP

**SPDT**

### A RIGHT ANGLE, PC THRU-HOLE

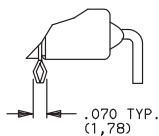
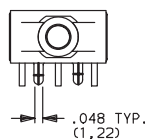


**E112SD1ABE  
SPDT**

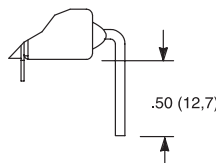


**SECTION A-A**

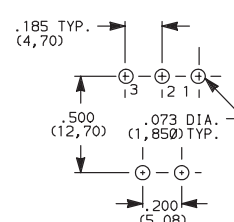
### A3 RIGHT ANGLE, SNAP-IN, PC THRU-HOLE



### AW RIGHT ANGLE, EXTENDED, PC THRU-HOLE

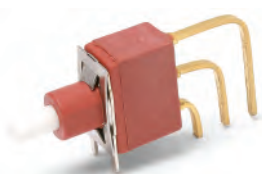


### PC MOUNTING

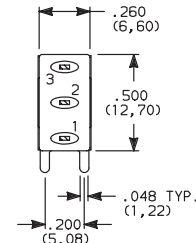
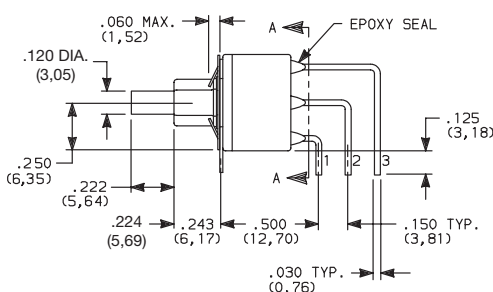
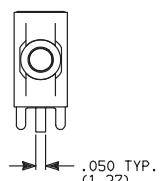


**NOTE:** Terminal bend radii and lead-in manufacturing option.  
Available with D1 bushing only.

### AV2 VERTICAL RIGHT ANGLE, PC THRU-HOLE, .150" PITCH

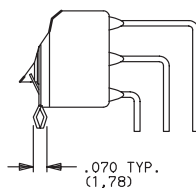
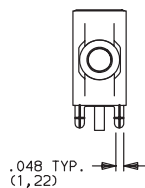


**E112SD1AV2BE  
SPDT**

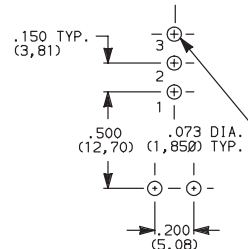


**SECTION A-A**

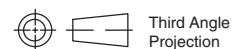
### AV3 VERTICAL RIGHT ANGLE, SNAP-IN, PC THRU-HOLE, .150" PITCH



### PC MOUNTING



**NOTE:** Terminal bend radii and lead-in manufacturing option.  
Available with D1 bushing only.



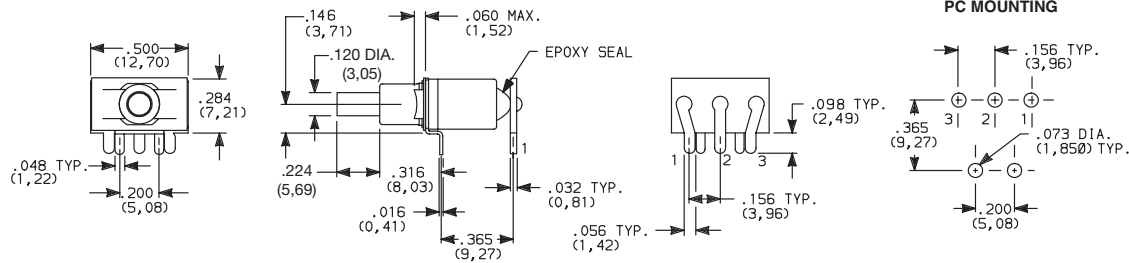
Dimensions are shown: Inches (mm)  
Specifications and dimensions subject to change

**C&K**

# E010 Series Sealed Momentary Pushbutton Switches

## TERMINATIONS

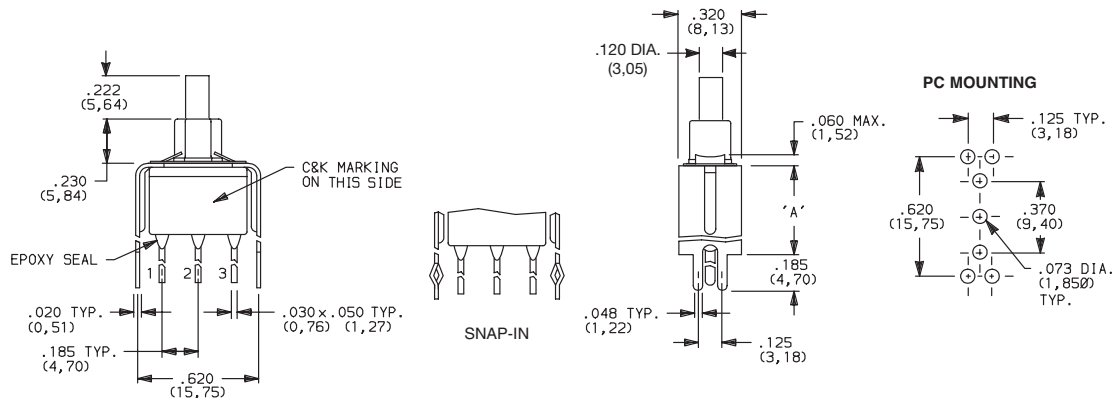
### R2 RIGHT ANGLE WITH PCB



**NOTE:** Available with D1 bushing and B contact material only.

### V3, V4 VERTICAL MOUNT, V-BRACKET

### V31, V91 VERTICAL MOUNT, V-BRACKET, SNAP-IN

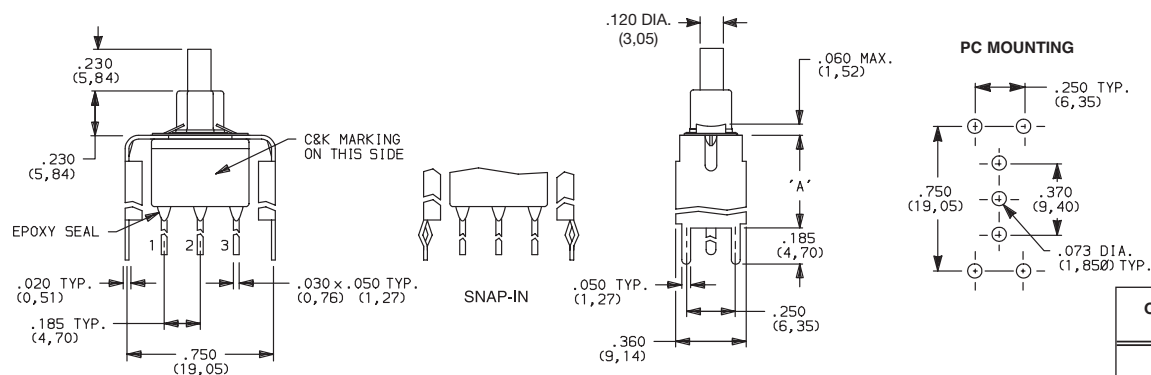


OPTION CODE	DIM 'A'
V3, V31	.460 (11,68)
V4	.630 (16,00)
V91	1.150 (29,21)

**NOTE:** Available with D1 bushing only.

### V6, V8 VERTICAL MOUNT, V-BRACKET

### V81 VERTICAL MOUNT, V-BRACKET, SNAP-IN



OPTION CODE	DIM 'A'
V6	.460 (11,68)
V8, V81	.953 (24,21)

**NOTE:** Available with D1 bushing only.



Dimensions are shown: Inches (mm)  
Specifications and dimensions subject to change

www.ck-components.com



A

Pushbutton

**A****Pushbutton**

# E010 Series Sealed Momentary Pushbutton Switches

## CONTACT MATERIAL

OPTION CODE	CONTACT MATERIAL	TERMINAL PLATING	RATINGS	
<b>B</b>	GOLD <sup>1</sup>	GOLD <sup>1</sup>	LOW LEVEL/DRY CIRCUIT	0.4 VA MAX. @ 20 V AC OR DC MAX.
<b>P</b>		MATTE-TIN <sup>6</sup>		
<b>Q</b>	SILVER <sup>4,5</sup>	SILVER <sup>5</sup>	POWER	4 AMPS @ 125 V AC OR 28 V DC.
<b>G</b>	GOLD OVER SILVER <sup>2,3</sup>	GOLD <sup>3</sup>	LOW LEVEL/DRY CIRCUIT OR POWER	0.4 VA MAX. @ 20 V AC OR DC MAX. OR 4 AMPS @ 125 V AC OR 28 V DC.

\* Note: See Technical Data section of this catalog for RoHS compliant and compatible definitions and specifications.

<sup>1</sup> CONTACTS & TERMINALS: Copper alloy, with gold plate over nickel plate.

<sup>2</sup> END CONTACTS: Coin silver, with gold plate over nickel plate.

<sup>3</sup> CENTER CONTACTS & ALL TERMINALS: Coin silver, with gold plate over nickel plate.

<sup>4</sup> END CONTACTS: Coin silver, silver plated.

<sup>5</sup> CENTER CONTACTS & ALL TERMINALS: Copper alloy, silver plated.

<sup>6</sup> TERMINALS: Copper alloy, with matte-tin over nickel plate.

**NOTE:** Any models supplied with P, Q, B or G contact material are RoHS compliant.

All models  with all options when ordered with G or Q contact material.

B contact material standard with all terminations except C, Z.

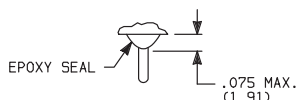
B contact material must be ordered with R2 terminations.

Q contact material standard with C, Z terminations.

P contact materials not available with Z terminations.

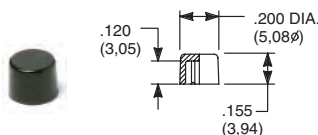
## SEAL

**E** EPOXY SEAL



## AVAILABLE HARDWARE

Cap

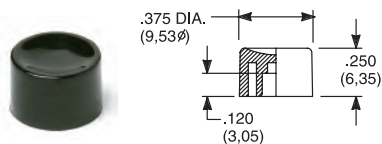


PART NO.

708901000 WHITE  
708902000 BLACK  
708903000 RED

Material: Nylon  
Finish: Gloss

Cap

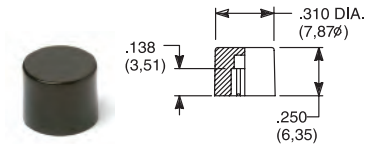


PART NO.

752701000 WHITE  
752702000 BLACK  
752703000 RED

Material: Nylon  
Finish: Gloss

Cap



PART NO.

801801000 WHITE  
801802000 BLACK  
801803000 RED

Material: Nylon  
Finish: Gloss

**NOTE:** Additional nuts, locking rings and lockwashers available separately, see section "Technical Data and Additional Hardware".  
Other cap colors available, consult Customer Service Center.



Dimensions are shown: Inches (mm)  
Specifications and dimensions subject to change

# E010 Series Sealed Momentary Pushbutton Switches

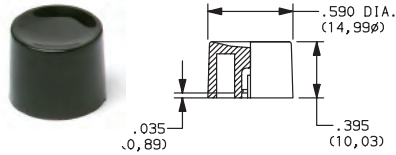


A

Pushbutton

## AVAILABLE HARDWARE

Cap, Snap-fitting plunger

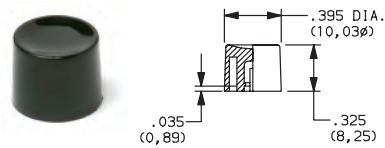


**PART NO.**

**452D01000** WHITE  
**452D02000** BLACK  
**452D03000** RED

Material: Nylon  
Finish: Gloss

Cap, Snap-fitting plunger

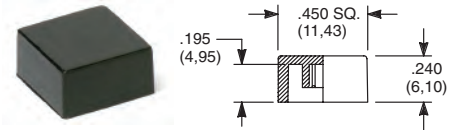


**PART NO.**

**894101000** WHITE  
**894102000** BLACK  
**894103000** RED

Material: Nylon  
Finish: Gloss

Cap



**PART NO.**

**484601000** WHITE  
**484602000** BLACK  
**484603000** RED

Material: Nylon  
Finish: Gloss

**PART NO.**

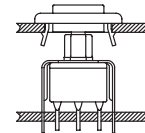
**798201000** WHITE  
**798202263** BLACK  
**798203000** RED

Material: Nylon  
Finish: Matte

**NOTE:** Additional nuts, locking rings and lockwashers available separately, see section "Technical Data and Additional Hardware". Other cap colors available, consult Customer Service Center.

Frames snap into panel opening and are independent from switch mounting. Accurate positioning of the PC mounted switch relative to the panel opening is necessary to provide proper clearance between actuator and frame. Available in two basic styles and four panel thicknesses .047-.125 in. Material: Nylon. Finish: Matte.

TYPICAL APPLICATION



.047" (1,19) PANEL THK.

**PART NO.**

**432502263**

.062" (1,57) PANEL THK.

**PART NO.**

**432602263**

.090" (2,29) PANEL THK.

**PART NO.**

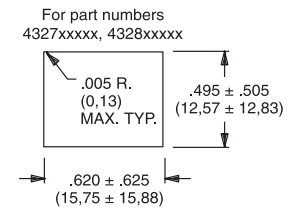
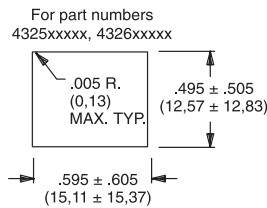
**432702263**

.125" (3,18) PANEL THK.

**PART NO.**

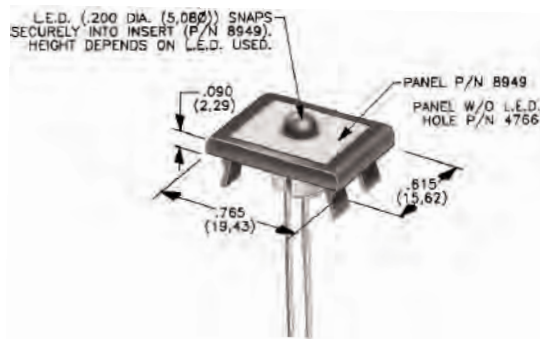
**432802263** BLACK

PANEL MOUNTING



Panel Inserts

Above frames (part nos. 432XXXXXX) are also available with insert which accepts LED for indicator light assembly. Order insert separately from frame. Blank insert panel (without hole for LED) also available. **LED not included.**



PANEL INSERT WITH HOLE FOR LED

**PART NO.**

**894902000**

BLANK PANEL INSERT WITHOUT HOLE FOR LED

**PART NO.**

**476602000** BLACK

Special colors, custom markings available, consult Customer Service Center.



Dimensions are shown: Inches (mm)  
Specifications and dimensions subject to change



www.ck-components.com