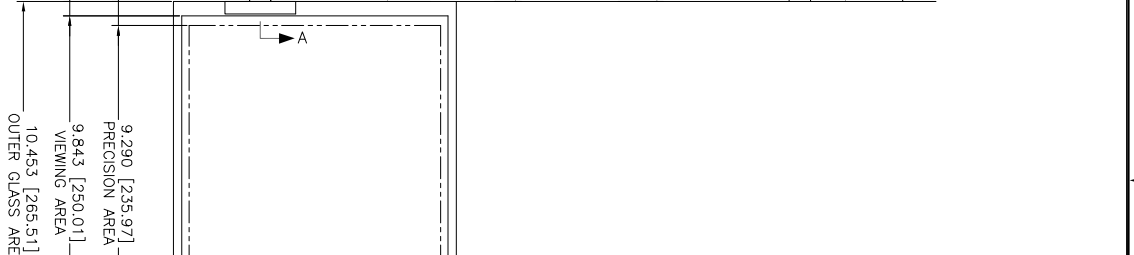
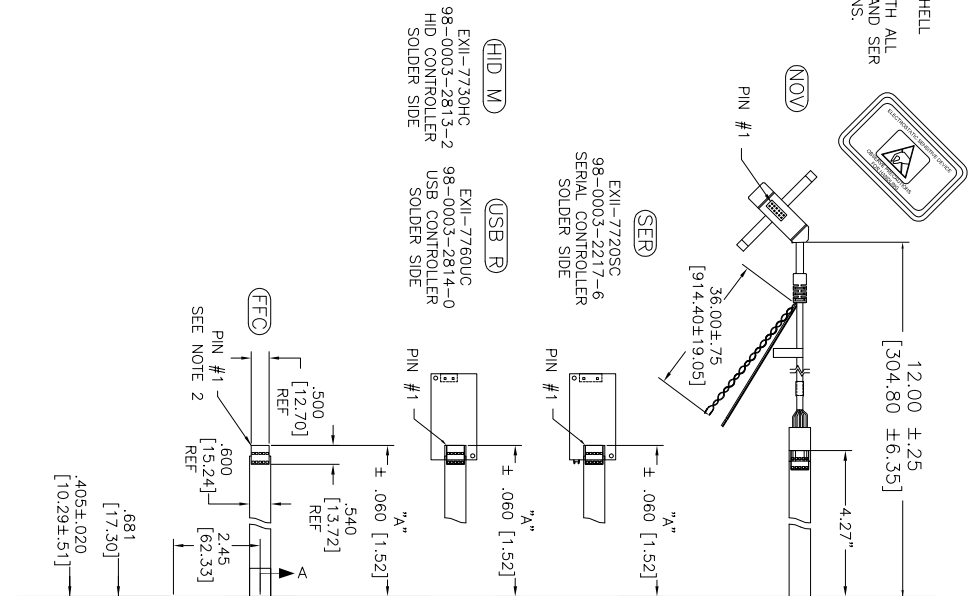


OGA DIAGONAL: 13.16 [334.34]  
 VA DIAGONAL: 12.39 [314.63]  
 PA DIAGONAL: 11.70 [297.08]

ESD CLAMSHELL  
 CASE IS USED WITH ALL  
 NOV, USB AND SER  
 TERMINATIONS.



TOP LEVEL NUMBER	US NUMBER	TYPE	DM "A" (TOTAL GLASS TO CONNECTOR)	A/G FINISH	PROD SPEC
17-8581-203	98-0003-2633-4	FFC	4.27" [108.46]	AG500	23655
17-8581-205	98-0003-2634-2	FFC	8.00" [203.20]	AG500	23655
17-8581-206	98-0003-2635-9	NOV	SEE DWG	AG500	23655
17-8581-221	98-0003-2637-5	SER	4.27" [108.46]	AG500	23655
17-8581-222	98-0003-2639-1	SER	8.00" [203.20]	AG500	23655
17-8581-218	98-0003-3272-0	USB R	4.27" [108.46]	AG500	23655
17-8581-230	98-0003-2994-0	HID M	8.00" [203.20]	AG500	23655
N/A	98-1100-0089-4	FFC	8.00" [203.20]	WC100	34523
N/A	98-1100-0090-2	USB R	8.00" [203.20]	WC100	34523

- NOTES:
1. WEIGHT OF GLASS IN GRAMS: 4.11±10%
  2. NICOMATIC HOUSING P/N: OLOS
  3. NICOMATIC RECEPTACLES (PINS) MATTE TIN PLATED P/N: 14106-12
  4. HOUSING ORIENTED WITH LATCH DOWN

PINOUT	1	2	3	4	5
LR					
LL					
SHLD					
UL					
UR					

UNITS: INCHES [MM]

TOLERANCES UNLESS OTHERWISE SPECIFIED

X ±.03 [.76]  
 .XX ±.015 [.38]  
 ANGLES ±1°

THIRD ANGLE PROJECTION

DO NOT SCALE DRAWING

SCALE 1 = 1

3M TOUCH SYSTEMS  
 3M TOUCH SYSTEMS  
 3M TOUCH SYSTEMS  
 3M TOUCH SYSTEMS

THIS DOCUMENT IS THE PROPERTY OF 3M TOUCH SYSTEMS. IT IS TO BE USED ONLY FOR THE PROJECT AND NOT BE REPRODUCED OR COPIED IN ANY MANNER WITHOUT THE WRITTEN PERMISSION OF 3M TOUCH SYSTEMS.

DATE: 9/05

BY: K. CHROWLEY

MARKETING DRAWING  
 SCT32NN 12.39"

REVISED PER CO 036265 4/13 SB  
 REVISED PER CO 036099 2/13 SB

DATE DATE DATE

DESIGNER: TSD-28159

SCALE: NONE