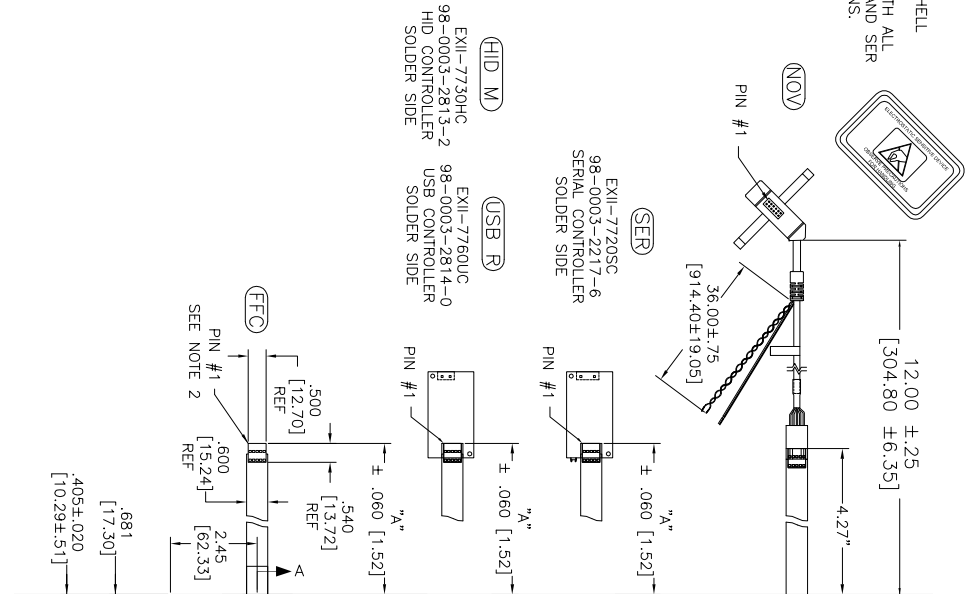


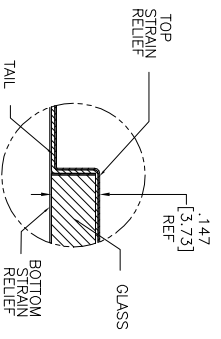
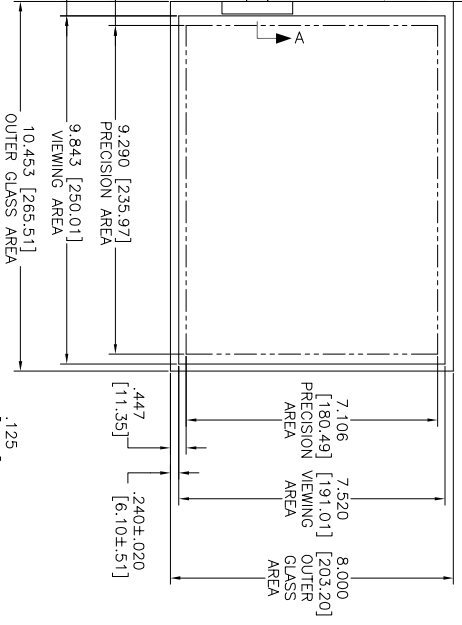
OGA DIAGONAL: 13.16 [334.34]  
 VA DIAGONAL: 12.39 [314.63]  
 PA DIAGONAL: 11.70 [297.08]

ESD CLAMSHELL  
 CASE IS USED WITH ALL  
 NOV, USB AND SER  
 TERMINATIONS.



- NOTES:
1. WEIGHT OF GLASS IN GRAMS: 4.11±10%
  2. NICOMATIC HOUSING P/N: OLOS
  3. NICOMATIC RECEPTAGLES (PINS) MATTE TIN PLATED P/N: 14106-12 HOUSING ORIENTED WITH LATCH DOWN

| TOP LEVEL NUMBER | US NUMBER      | TYPE  | DM "A" (TOTAL GLASS TO CONNECTOR) | A/G FINISH | PROD SPEC |
|------------------|----------------|-------|-----------------------------------|------------|-----------|
| 17-8581-203      | 98-0003-2633-4 | FFC   | 4.27" [108.46]                    | AG500      | 23655     |
| 17-8581-205      | 98-0003-2634-2 | FFC   | 8.00" [203.20]                    | AG500      | 23655     |
| 17-8581-206      | 98-0003-2635-9 | NOV   | SEE DWG                           | AG500      | 23655     |
| 17-8581-221      | 98-0003-2637-5 | SER   | 4.27" [108.46]                    | AG500      | 23655     |
| 17-8581-222      | 98-0003-2639-1 | SER   | 8.00" [203.20]                    | AG500      | 23655     |
| 17-8581-218      | 98-0003-3272-0 | USB R | 4.27" [108.46]                    | AG500      | 23655     |
| 17-8581-230      | 98-0003-2994-0 | HID M | 8.00" [203.20]                    | AG500      | 23655     |
| N/A              | 98-1100-0089-4 | FFC   | 8.00" [203.20]                    | WC100      | 34523     |
| N/A              | 98-1100-0090-2 | USB R | 8.00" [203.20]                    | WC100      | 34523     |



| PINOUT |
|--------|
| 1 LR   |
| 2 LL   |
| 3 SHLD |
| 4 UL   |
| 5 UR   |

.147±.020 [3.73±.51]  
 TOTAL THICKNESS  
 OF GLASS, CABLE  
 AND STRAIN RELIEF

UNITS INCHES [MM]

TOLERANCES UNLESS OTHERWISE SPECIFIED

|        |              |
|--------|--------------|
| X      | ± .03 [.76]  |
| .XXX   | ± .015 [.38] |
| ANGLES | ± 1°         |

THIRD ANGLE PRACTICE

DO NOT SCALE DRAWING

SCALE 1 = 1

DMW K CHROWLEY 9/05

| REV | DATE | BY | CHKD | APP'D | DESCRIPTION           |
|-----|------|----|------|-------|-----------------------|
| L   |      |    |      |       | REVISED PER CO 036265 |
| K   |      |    |      |       | REVISED PER CO 036099 |

MARKETING DRAWING  
 SCT32NN 12.39"

DATE 4/13 SB

DATE 2/13 SB

3M TOUCH SYSTEMS  
 3M TOUCH SYSTEMS  
 3M TOUCH SYSTEMS  
 3M TOUCH SYSTEMS

THIS DOCUMENT IS THE PROPERTY OF 3M TOUCH SYSTEMS. IT IS TO BE USED ONLY FOR THE PROJECT AND NOT TO BE REPRODUCED OR TRANSMITTED IN ANY FORM OR BY ANY MEANS, ELECTRONIC OR MECHANICAL, INCLUDING PHOTOCOPYING, RECORDING, OR BY ANY INFORMATION STORAGE AND RETRIEVAL SYSTEM, WITHOUT THE WRITTEN PERMISSION OF 3M TOUCH SYSTEMS.

DMW K CHROWLEY 9/05

DO NOT SCALE DRAWING

SCALE 1 = 1

DOC FORMAT AUTOCAD SHEET 1 OF 1

DOC NO TSD-28159

REV L