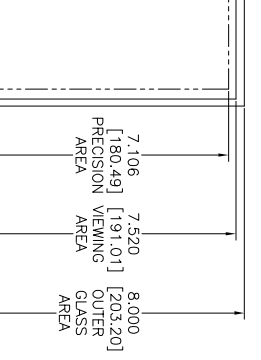
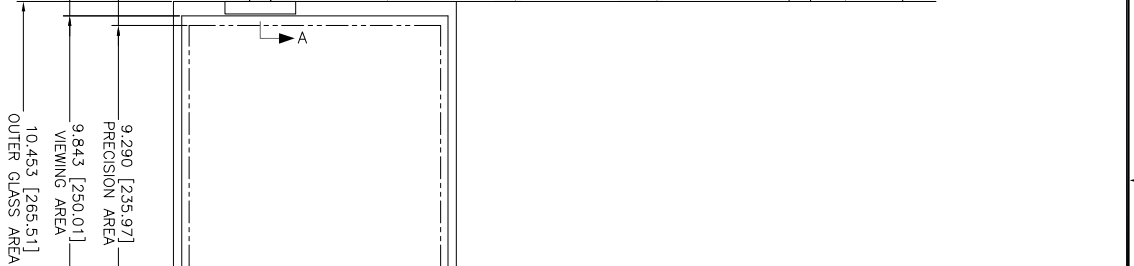
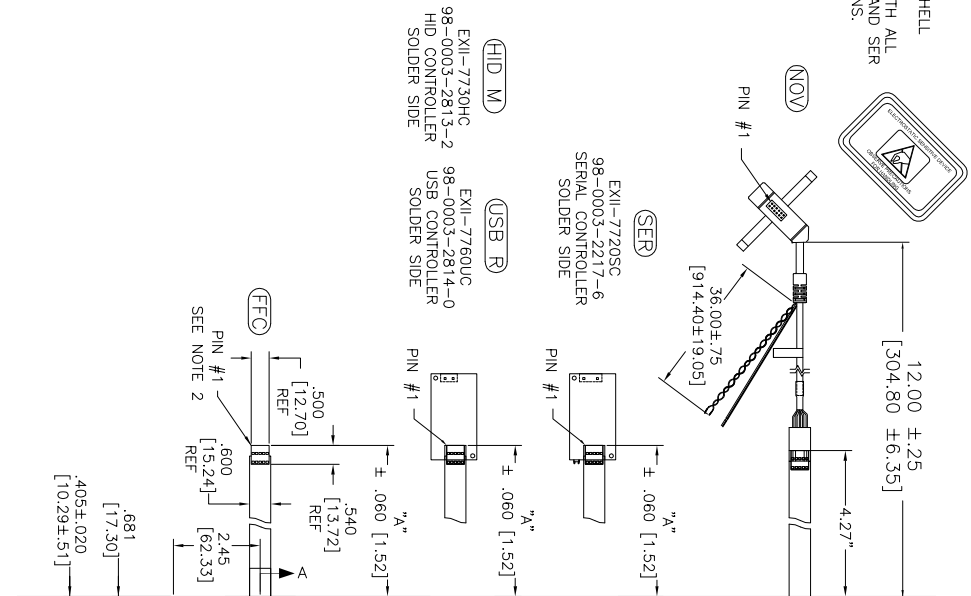


OGA DIAGONAL: 13.16 [334.34]
 VA DIAGONAL: 12.39 [314.63]
 PA DIAGONAL: 11.70 [297.08]

ESD CLAMSHELL
 CASE IS USED WITH ALL
 NOV, USB AND SER
 TERMINATIONS.



TOP LEVEL NUMBER	US NUMBER	TYPE	DM "A" (TOTAL GLASS TO CONNECTOR)	A/G FINISH	PROD SPEC
17-8581-203	98-0003-2633-4	FFC	4.27" [108.46]	AG500	23655
17-8581-205	98-0003-2634-2	FFC	8.00" [203.20]	AG500	23655
17-8581-206	98-0003-2635-9	NOV	SEE DWG	AG500	23655
17-8581-221	98-0003-2637-5	SER	4.27" [108.46]	AG500	23655
17-8581-222	98-0003-2639-1	SER	8.00" [203.20]	AG500	23655
17-8581-218	98-0003-3272-0	USB R	4.27" [108.46]	AG500	23655
17-8581-230	98-0003-2994-0	HID M	8.00" [203.20]	AG500	23655
N/A	98-1100-0089-4	FFC	8.00" [203.20]	WC100	34523
N/A	98-1100-0090-2	USB R	8.00" [203.20]	WC100	34523

- NOTES:
1. WEIGHT OF GLASS IN GRAMS: 4.11±10%
 2. NICOMATIC HOUSING P/N: OLOS
 3. NICOMATIC RECEPTAGLES (PINS) MATTE TIN PLATED P/N: 14106-12 HOUSING ORIENTED WITH LATCH DOWN

PINOUT	UR	UL	SHLD	LL	LR
1	UR	UL	SHLD	LL	LR
2	UR	UL	SHLD	LL	LR
3	UR	UL	SHLD	LL	LR
4	UR	UL	SHLD	LL	LR
5	UR	UL	SHLD	LL	LR

UNITS: INCHES [MM]

TOLERANCES UNLESS OTHERWISE SPECIFIED

X ±.03 [0.76]
 .XX ±.015 [0.38]
 ANGLES ±1°

THIRD ANGLE PROJECTION

DO NOT SCALE DRAWING

SCALE: 1 = 1

3M TOUCH SYSTEMS
 3M TOUCH SYSTEMS
 3M TOUCH SYSTEMS
 3M TOUCH SYSTEMS
 3M TOUCH SYSTEMS

MARKETING DRAWING
 SCT32NN 12.39"

REVISED PER CO 036265 4/13 SB
 REVISED PER CO 036099 2/13 SB

DATE DATE DATE

DESIGNER: AUTOCAD SHEET: 1 OF 1 REV: L

DOCUMENT NO: TSD-28159