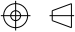
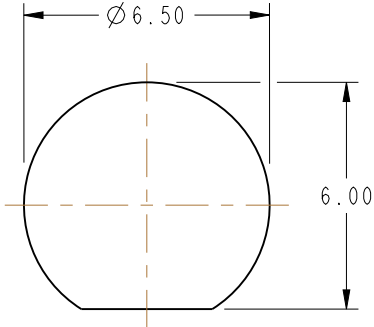
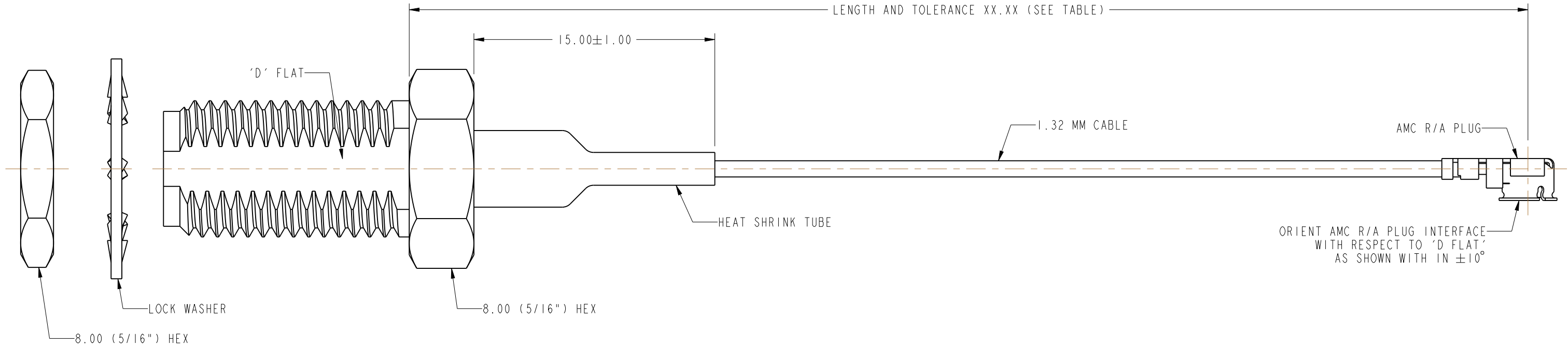
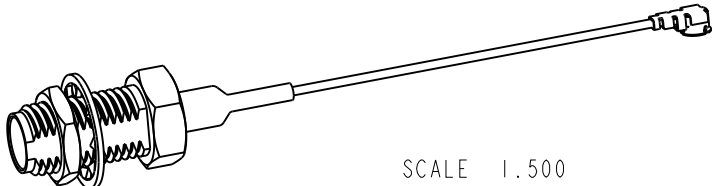


NOTES:  1. MATERIALS AND FINISHES:  RP SMA STR BHD JACK - BRASS, GOLD PLATING CABLE - 1.32 MM TO AMC R/A PLUG	THIRD ANGLE PROJ. 	REVISIONS			

2. ELECTRICAL:
- A. IMPEDANCE: 50 OHM, NOMINAL
3. PACKAGING:
- A. QUANTITY: SINGLE PACK  
B. BAG TO BE MARKED: AMPHENOL RF, 336314-13-XXXX, AND DATE CODE



**RECOMMENDED MOUNTING  
HOLE DIMENSIONS**  
  
(MAX.PANEL THICKNESS = 3.20 MM)



PART NUMBER	LENGTH AND TOLERANCE XX.XX IN MM
336314-13-0050	50.00±5.00
336314-13-0100	100.00±5.00
336314-13-0150	150.00±5.00
336314-13-0200	200.00±5.00
336314-13-0250	250.00±5.00
336314-13-0300	300.00±5.00

**DESIGN REQUIREMENTS:**

- ☒ FREQUENCY : DC TO 6 GHz ☒ CONTINUITY
- ☐ VSWR : ---- MAX ☒ HI-POT : 200 VRMS
- ☐ INS. LOSS : ---- dBMAX ☐ OTHER

**CUSTOMER OUTLINE DRAWING**  
ALL OTHER SHEETS ARE FOR INTERNAL USE ONLY

UNLESS OTHERWISE SPECIFIED, DIMENSIONS ARE IN METRIC AND TOLERANCES ARE: <0.5mm ± 0.05mm 0.5 - 6mm ± 0.1mm 6 - 30mm ± 0.2mm 30 - 120mm ± 0.3mm ANGLES ±1°	MATERIAL  SEE NOTES	DRAWN RAJAGOPAL N	DATE 19-May-15	TITLE RP SMA STR BHD JACK TO AMC R/A PLUG USING 1.32 MM CABLE VARIOUS LENGTH		Amphenol RF  www.amphenolrf.com	
		ENGINEER RAJAGOPAL N	DATE 19-May-15				
		REFERENCE EAR # 6751	DATE 28-Jul-15	SCALE: 5.5:1.0   SHEET 2 OF 2		DRAWING NO.336314-13-XXXX	
		CONFIGURATION LEVEL: In Work	CAD FILE	DWG SIZE B		REV B	PART NO.336314-13-XXXX

NOTICE - These drawings, specifications, or other data (1) are, and remain the property of Amphenol corp. (2) must be returned upon request; and (3) are confidential and not to be disclosed to any person other than those to whom they are given by Amphenol Corp. the furnishing of these drawings, specifications, or other data by Amphenol Corp., or to any other person to anyone for any purpose is not to be regarded by implication or otherwise in any manner licensing, granting rights to permitting such holder or any other person to manufacture, use or sell any product, process or design, patented or otherwise, that may in any way be related to or disclosed by said drawings, specifications, or other data.