

MFG. ENG.	APPROVED BY:	DATE:	QA	APPROVED BY:	DATE:

NOTES:

- DCP-USBAB-HD SHOWN IN EXPLODED VIEW. (USB A 2.0 RECEPTACLE TO 5 PIN HEADER WITH QUICK CONNECT COUPLING.)
- THE USB 2.0 RECEPTACLE STYLE IS TYPE "A".
- THE DIMENSION DOES NOT INCLUDE GASKET COMPRESSION.
- THE PINOUT AND DIMENSIONS ARE TYPICAL FOR ALL VERSIONS.
- UNLESS OTHERWISE SPECIFIED, DIMENSIONS WITH TWO DECIMAL PLACES HAVE TOLERANCES OF ± 0.02 [± 0.5 mm].

MATERIALS:

GASKET: ELASTOMER, BLACK
HEX NUT: THERMOPLASTIC, BLACK
USB PANEL HOUSING: THERMOPLASTIC, BLACK
USB RECEPTACLE:
SHELL: COPPER ALLOY, TIN PLATED
CONTACTS: COPPER ALLOY, GOLD PLATED
INSULATOR: THERMOPLASTIC, WHITE
HEADER:
INSULATOR: THERMOPLASTIC, BLACK
CONTACTS: COPPER ALLOY, GOLD PLATED
PCB: FR-4

ELECTRICAL:

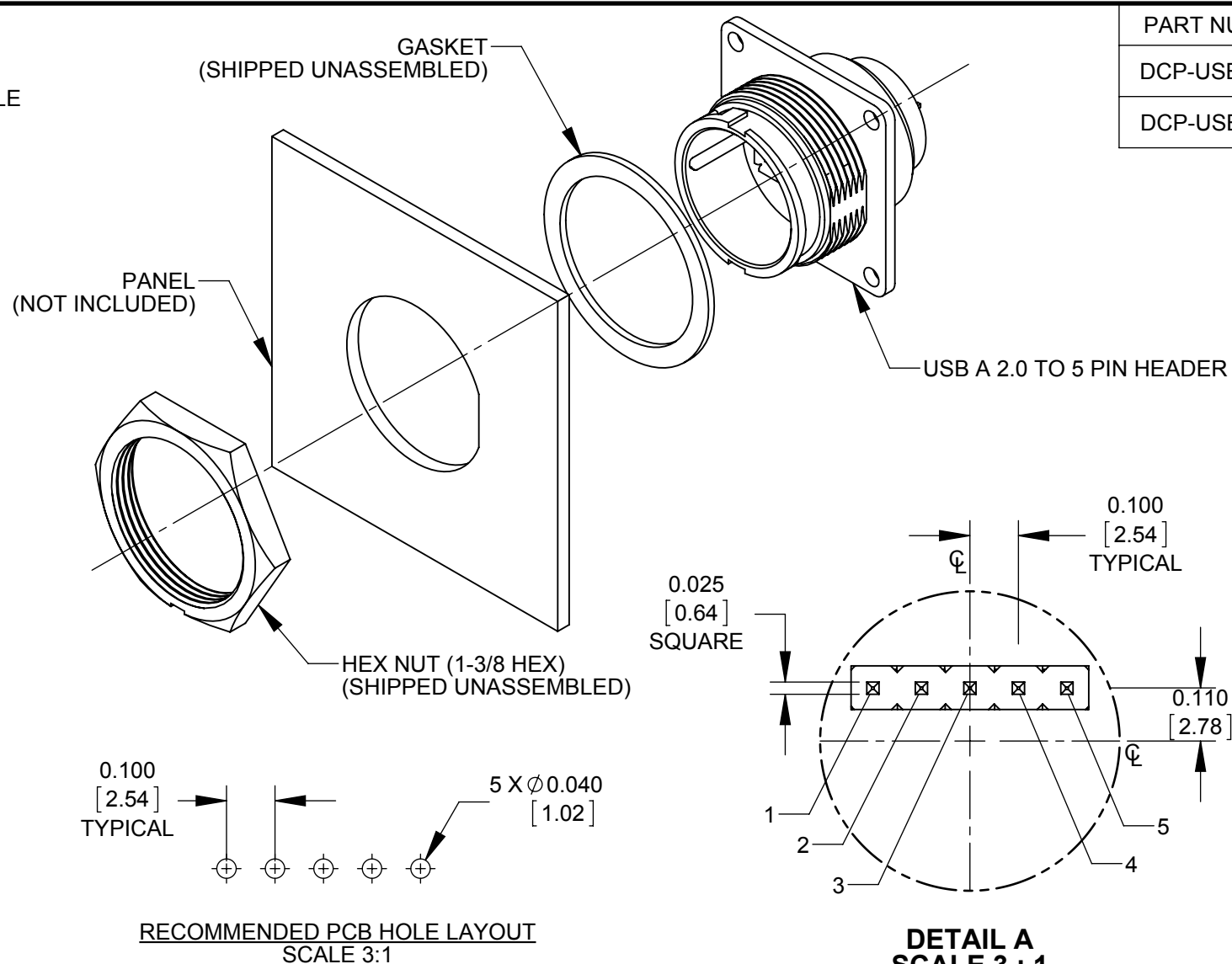
CURRENT RATING: 1.5 A MINIMUM
CONTACT RESISTANCE: 30 MILLIOHMS MAXIMUM
INSULATION RESISTANCE: 1000 MEGAOHMS MINIMUM
DIELECTRIC WITHSTANDING VOLTAGE: 500V AC

PRODUCT RATING:

IP-67 & IP-68, NEMA 250 (6P), WHEN MATED

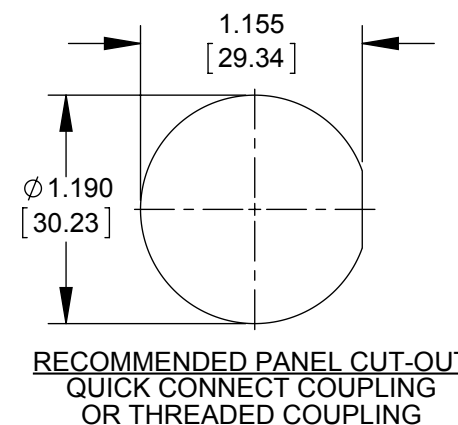
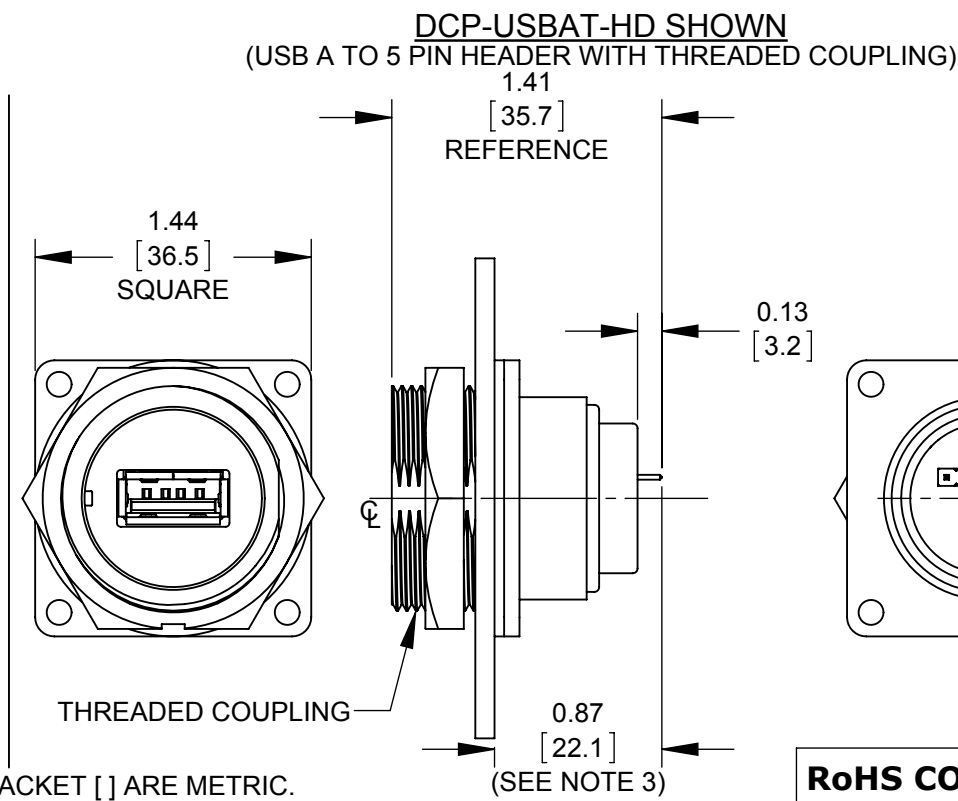
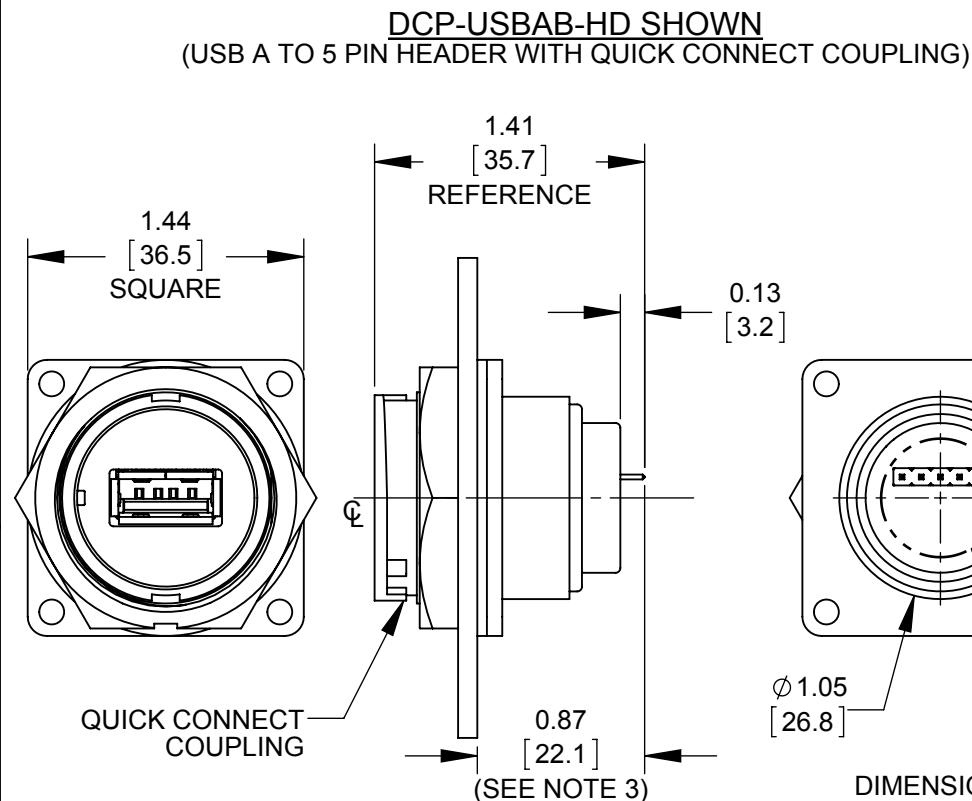
OTHER:

OPERATING TEMPERATURE: -25°C TO $+85^{\circ}\text{C}$ [-13°F TO $+185^{\circ}\text{F}$]
RECOMMENDED PANEL THICKNESS:
QUICK CONNECT COUPLING: 1/32" TO 3/16" (0.8mm to 4.8mm)
THREADED COUPLING: 1/32" TO 5/32" (0.8mm to 3.9mm)



PART NUMBER	COUPLING TYPE	DESCRIPTION
DCP-USBAB-HD	QUICK CONNECT	USB A 2.0 TO 5 PIN HEADER
DCP-USBAT-HD	THREADED	USB A 2.0 TO 5 PIN HEADER

USB A PINOUT	HEADER PINOUT
1	1
2	2
3	3
4	4
SHIELD	5



RoHS COMPLIANT

PRELIMINARY

CUSTOMER DRAWING

0A		JGK	3/25/15		DRAWING CREATED PER PDR #14007, QUOTE #100113 & #100167.						
REV.		INIT.		DATE		DESCRIPTION					
ALL INFORMATION ILLUSTRATED IS THE PROPERTY OF "CONKALL CORPORATION." UNAUTHORIZED DUPLICATION OR DISTRIBUTION OF THIS DOCUMENT IS PROHIBITED.					ORIG. DRAWN BY: JGK		DATE: 3/25/15		<div>CONXall</div> <div>601 E. WILDWOOD VILLA PARK, IL 60181</div>		
					CHECKED BY:						
ALL UNITS ARE IN FEET, INCHES, FRACTION OF INCHES AND DECIMALS. UNLESS OTHERWISE SPECIFIED TOLERANCES: 3 PLACE DECIMALS ±.005 ANGLES ±1° FRACTIONS ±1/16 ▷ = CRITICAL CHARACTERISTIC FLAG PER SPEC. XXXX					APPROVED BY:		TITLE:		USB A PANEL CONNECTOR USB A TO 5 PIN HEADER DATA-CON-X STANDARD PRODUCT		
					SCALE 1:1		SIZE B				SHEET 1 OF 1
FILE: SAME AS P/N					DIRECTORY: SLW		PART NUMBER:		DCP-USBAX-HD SERIES		
										REV 0A	