

MFG. ENG.	APPROVED BY:	DATE:	QA	APPROVED BY:	DATE:

NOTES:

- DCP-USBAB-HD SHOWN IN EXPLODED VIEW. (USB A 2.0 RECEPTACLE TO 5 PIN HEADER WITH QUICK CONNECT COUPLING.)
- THE USB 2.0 RECEPTACLE STYLE IS TYPE "A".
- THE DIMENSION DOES NOT INCLUDE GASKET COMPRESSION.
- THE PINOUT AND DIMENSIONS ARE TYPICAL FOR ALL VERSIONS.
- UNLESS OTHERWISE SPECIFIED, DIMENSIONS WITH TWO DECIMAL PLACES HAVE TOLERANCES OF ± 0.02 [± 0.5 mm].

MATERIALS:

GASKET: ELASTOMER, BLACK
HEX NUT: THERMOPLASTIC, BLACK
USB PANEL HOUSING: THERMOPLASTIC, BLACK
USB RECEPTACLE:
SHELL: COPPER ALLOY, TIN PLATED
CONTACTS: COPPER ALLOY, GOLD PLATED
INSULATOR: THERMOPLASTIC, WHITE
HEADER:
INSULATOR: THERMOPLASTIC, BLACK
CONTACTS: COPPER ALLOY, GOLD PLATED
PCB: FR-4

ELECTRICAL:

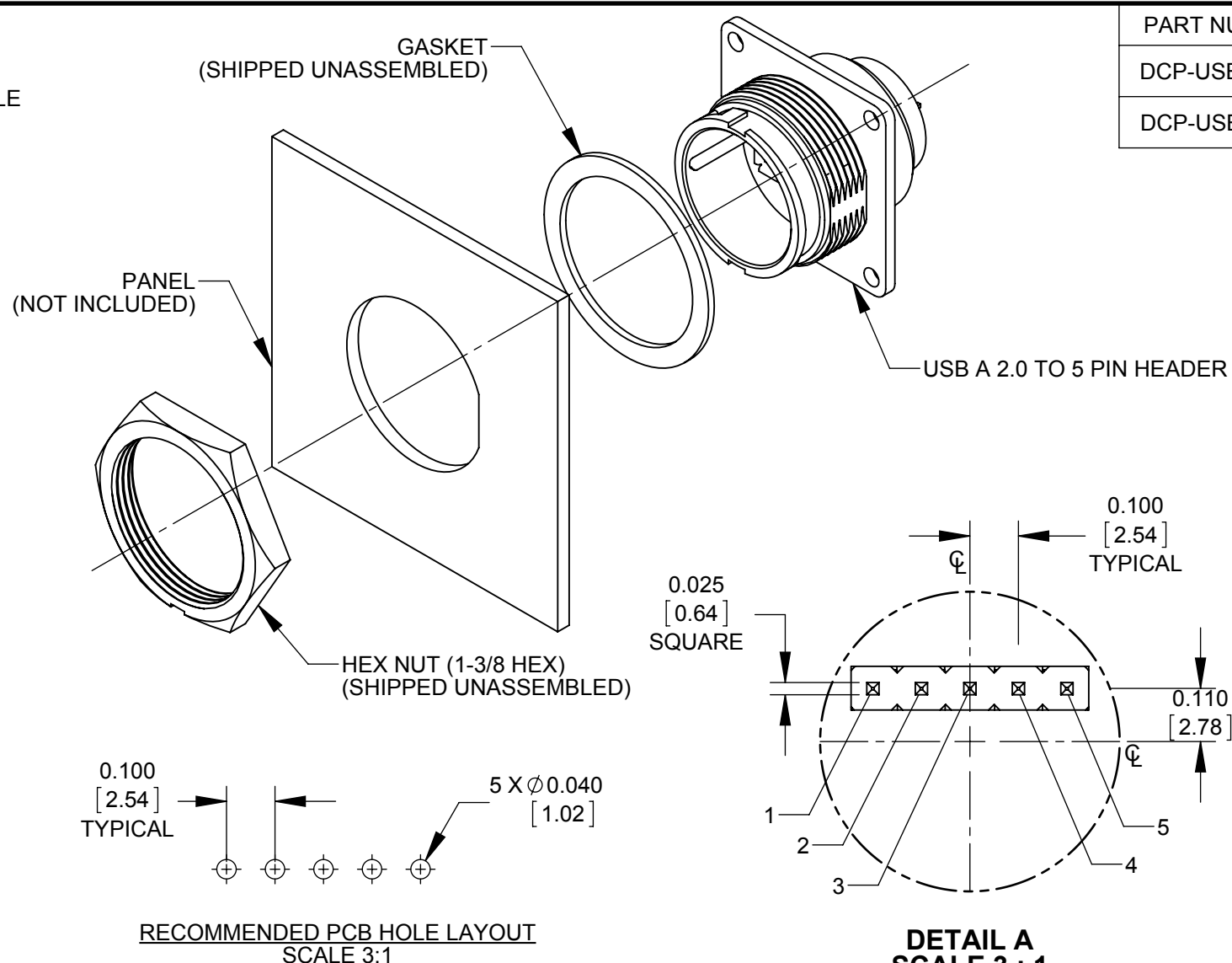
CURRENT RATING: 1.5 A MINIMUM
CONTACT RESISTANCE: 30 MILLIOHMS MAXIMUM
INSULATION RESISTANCE: 1000 MEGAOHMS MINIMUM
DIELECTRIC WITHSTANDING VOLTAGE: 500V AC

PRODUCT RATING:

IP-67 & IP-68, NEMA 250 (6P), WHEN MATED

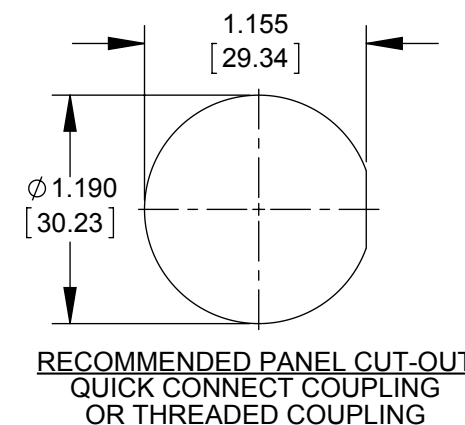
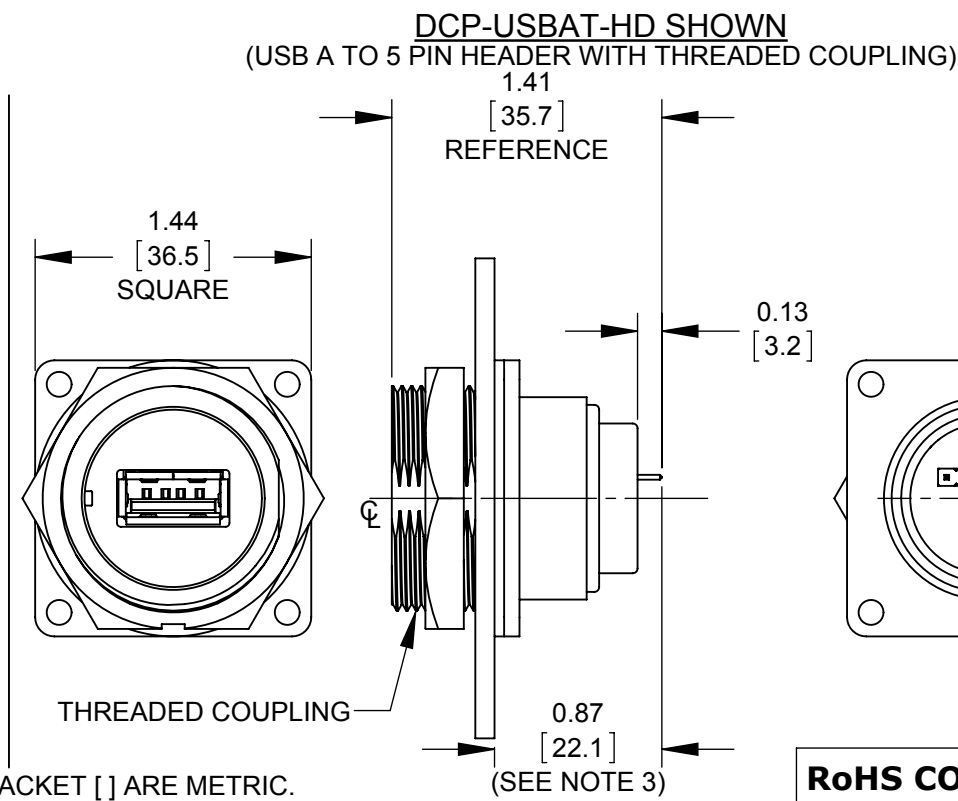
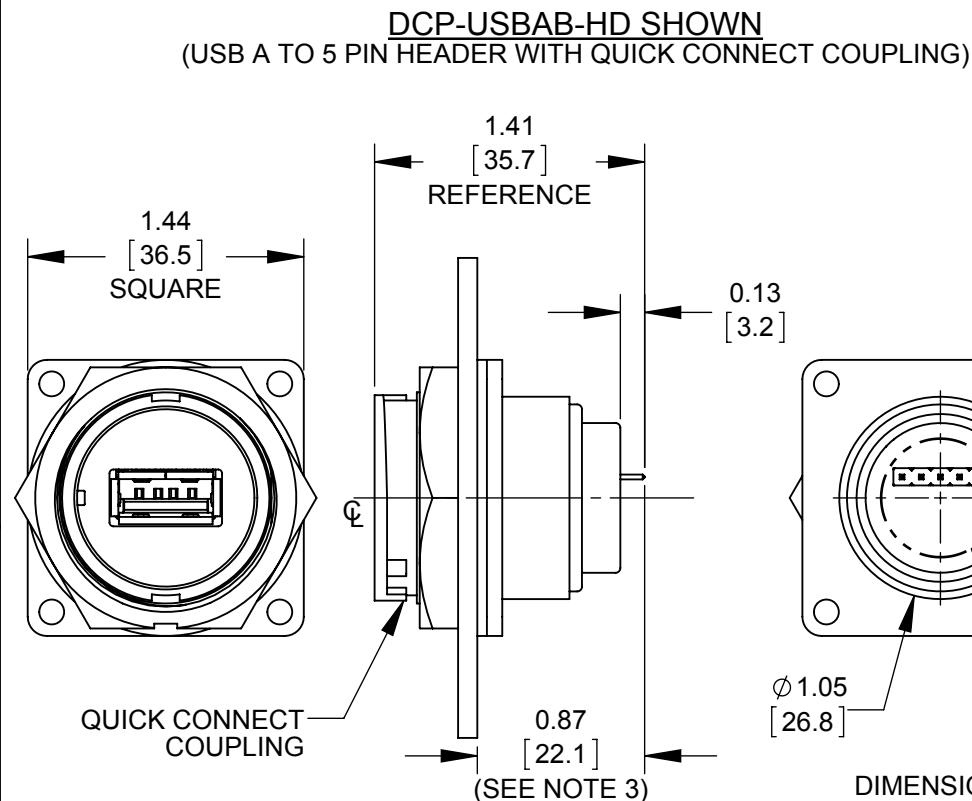
OTHER:

OPERATING TEMPERATURE: -25°C TO $+85^{\circ}\text{C}$ [-13°F TO $+185^{\circ}\text{F}$]
RECOMMENDED PANEL THICKNESS:
QUICK CONNECT COUPLING: 1/32" TO 3/16" (0.8mm to 4.8mm)
THREADED COUPLING: 1/32" TO 5/32" (0.8mm to 3.9mm)



PART NUMBER	COUPLING TYPE	DESCRIPTION
DCP-USBAB-HD	QUICK CONNECT	USB A 2.0 TO 5 PIN HEADER
DCP-USBAT-HD	THREADED	USB A 2.0 TO 5 PIN HEADER

USB A PINOUT	HEADER PINOUT
1	1
2	2
3	3
4	4
SHIELD	5



RoHS COMPLIANT

PRELIMINARY

CUSTOMER DRAWING

0A	JGK	3/25/15	DRAWING CREATED PER PDR #14007, QUOTE #100113 & #100167.		
REV.	INIT.	DATE	DESCRIPTION		
			ORIG. DRAWN BY:	DATE:	
			JGK	3/25/15	
ALL INFORMATION ILLUSTRATED IS THE PROPERTY OF "CONXALL CORPORATION." UNAUTHORIZED DUPLICATION OR DISTRIBUTION OF THIS DOCUMENT IS PROHIBITED.			CHECKED BY:		
ALL UNITS ARE IN FEET, INCHES, FRACTION OF INCHES AND DECIMALS.			APPROVED BY:		
UNLESS OTHERWISE SPECIFIED TOLERANCES:			TITLE:		
3 PLACE DECIMALS ± 0.005			USB A TO 5 PIN HEADER		
ANGLES $\pm 1^{\circ}$			DATA-CON-X		
FRACTIONS $\pm 1/16$			CUSTOMER: STANDARD PRODUCT		
Δ = CRITICAL CHARACTERISTIC FLAG PER SPEC. XXXX			SCALE	SIZE	SHEET
			1:1	B	1 OF 1
			FILE:	DIRECTORY:	PART NUMBER:
			SAME AS P/N	SLW	DCP-USBAX-HD SERIES
			REV 0A		