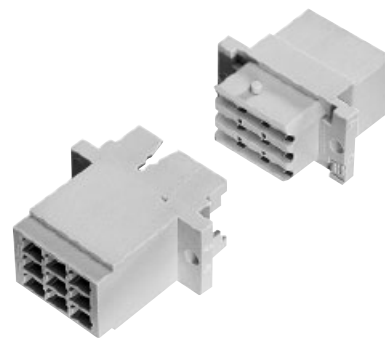


Number of contacts

# max. 9

Female and male connectors



Identification	Number of contacts	Part No.	Drawing	Dimensions in mm
<b>Female connector for crimp contacts</b> Order contacts separately	9	09 06 209 3201		max 12,5 $2 \times 3,81 = 7,62$ max 12,8 14,85
<b>Female crimp contacts</b>		see page 03.31		
<b>Male connector for crimp contacts</b> Order contacts separately	9	09 06 109 3401		14,8 5,6 2,5 6,9 29 3,6 12,7 3,81 $2 \times 3,81 = 7,62$
<b>Male crimp contacts</b>		see page 03.44		

DIN Power  
up to 6 A